

## VPL-VW12HT

LCD Front Projector



### NEW FEATURES

- Improvement of Contrast — 1000:1 contrast ratio.
- Detachable Color Compensation Filter “Cinema Filter”
- User Gamma Curve Adjustment Software “ImageDirector”
- Improved Air Filter
- Optional Lenses

### ADDITIONAL FEATURES

#### Audio/Video Features

- Excellent Contrast Resulting from New Optics, Lamp and Circuitry
- Intense, Deep Blacks and Rich, Vivid Color Reproduction
- High Resolution 16:9 Widescreen XGA LCD Panels (1366 x 768 Pixels)
- 1000 ANSI Lumen Brightness for Spectacular Picture Quality
- CineMotion™ 3-2 Pull Down Function
- HD-Ready Viewing for DVD and DTV Signal Sources
- Versatile Inputs: Accepts RGB, S-Video, TV Signals
- Sleek White Cabinet Design, Whisper Quiet Operation
- High Brightness 1000 ANSI Lumen
- Superb Picture Quality
- Cinema Black Mode
- Video Memory
- Through Mode

- Optimum Design for Home Theater
- Short Throwing Distance
- 16:9 RGB Acceptable
- 200W UHP Type Lamp
- Blue LED for Control Panel
- 540p Signal Acceptable

#### Video Section

- Projection System: 3 LCD Panels, 1 Lens Projection System
- LCD Panel: 1.35" p-Si TFT LCD Panel; 3,147,264 pixels (1,049,088 pixels x 3)
- Projection Lens: 1.2 Times Zoom Lens F2.4 to 2.7, f44.6-53.6mm
- Lamp: 200W UHP
- Screen Coverage: 40" - 300" Measured Diagonally (16:9)
- Light Output: ANSI 1000 lm (16:9) ANSI 750 lm (4:3)

- Color System: NTSC<sup>3.58</sup>, PAL, SECAM, NTSC<sup>4.43</sup>, PAL-M, PAL-N, PAL60 Automatically/Manually Selected
- Resolution: Video 750 TV Lines HD 1100 TV Lines RGB 1366 x 768 pixels
- Acceptable Signal: DTV (480i, 480p, 720p, 1080i), Progressive Component 15k Component 50/60 Hz System, Composite Video, Y/C Video; RGB Horizontal 15~91kHz Vertical 50~85Hz
- Cabinet Color: White and Silver

#### Convenience Features

- RGB Input Acceptable
- Full Function Remote (RM-PJVV11) with Blue-Lit Keys

# VPL-VW12HT

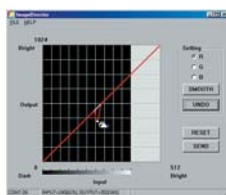
LCD Front Projector



## KEY TECHNOLOGY

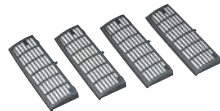


**Improvement of Contrast** VPL-VW12HT has new key devices for high contrast ratio. Combination between newly designed wide XGA LCD Panel with Micro Lens Array and Wide View film (WV film) makes black level deeper and image reproduction better than VPL-VW11HT. Such synergetic effect for this combination generates 1000:1 contrast ratio.



**Detachable Color Compensation Filter “Cinema Filter”** This filter enhances skin color fidelity and black level reproduction by structure of 25% reduction of green color element. We offer it to users as one of picture adjustments according to their preference and sources.

**User Gamma Curve Adjustment Software “ImageDirector”** User can adjust gamma curve R,G,B respectively on their PC by connecting to VPL-VW12HT with RS-232C reverse cable (not supplied). This is supplied as CD-ROM.



**Improved Air Filter** The shape of the filter is improved from the VPL-VW11HT to prevent dust from going inside of the box.



**Optional Lenses** Two optional lenses, which were already utilized to VPL-PX series, are available, giving users the ability to customize the VPL-VW12HT to perfectly suit your projection environment.

## ADDITIONAL FEATURES

### Specifications

#### Inputs and Outputs

- Video Composite: Phono Type 1Vp-p±2dB sync negative, 75Ω
- Y/C Input: Y: Mini DIN 4-pin 1Vp-p±2dB sync negative, 75Ω; C: Burst 0.286Vp-p±2dB (NTSC), 75Ω or 0.3Vp-p±2dB (PAL), 75Ω
- Input A/B: Component Progressive Phone Type Component Y/P<sub>b</sub>/P<sub>r</sub> Analog RGB: G 0.7Vp-p±2dB positive, 75Ω G with Sync /Y 1Vp-p±2dB sync negative, 75Ω B/C<sub>b</sub>/P<sub>b</sub> 0.7Vp-p±2dB positive, 75Ω R/C<sub>r</sub>/P<sub>r</sub> 0.7Vp-p±2dB positive, 75Ω SYNC/HD
- Composite Sync: 1 to 5 Vp-p, high impedance positive/negative Horizontal Sync: 1 to 5 Vp-p, high impedance positive/negative VD: Vertical Sync 1 to 5 Vp-p, high impedance positive/negative
- Control S In: Stereo Mini Jack 5Vp-p, Plug in power DC 5V
- Trigger: Mini Jack Power On: DC 12V Output Impedance 4.7kΩ Power Off: 0V
- Remote: RS-232C D-sub 9 pin Female
- Power Consumption (Standby): 6W
- Power Consumption (in Operation): 300W
- Operating Temperature: 0 to 35°C (14 to 104°F)
- Operating Humidity: 35 to 85%
- Heat Dispersion: 1023.7 BTU
- Projector Suspension Support: PSS-610
- Projector Air Filter: PK-VW11FL
- Monitor Cable: SMF-400 (HD D-sub 15-pin 5BNC)
- 50" Portable Screen: VPS-50C
- 80" Portable Screen: VPS-80C
- 100" High-End Screen: VPS-HE100W

#### General

- Power Requirements: AC100 to 2400V, 50/60Hz

#### Accessories

##### Supplied Accessories

- Instruction Manual
- Remote Commancer RM-PJVW10
- AA Battery x 2
- Air Filter x 3
- ImageDirector CD-ROM

##### Optional Accessories

- Projector Lamp for Replacement: LMP-P201

#### Weights & Measures

- Dimensions (W x H x D): 15<sup>5</sup>/<sub>8</sub>" x 6<sup>5</sup>/<sub>8</sub>" x 16<sup>7</sup>/<sub>8</sub>" (395 x 168 x 427mm)
- Weight: 17.1 lbs. (8kg)

©2002 Sony Electronics Inc. All rights reserved. Features and specifications are subject to change without notice.