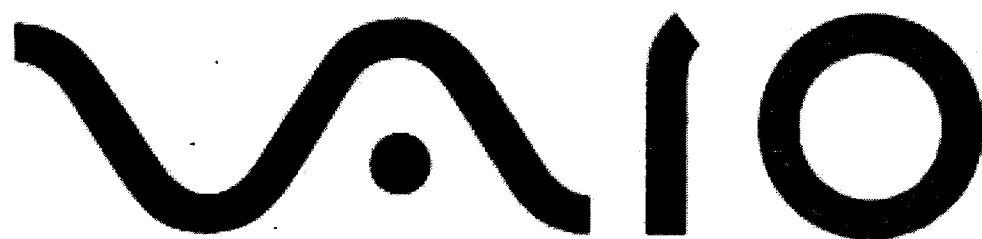


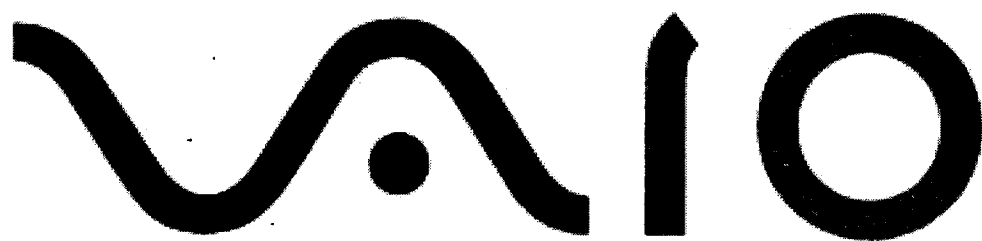
About Your Sony



SONY®

About Your Sony Notebook Computer

PCG-717C/PCG-719C



SONY®



NOTICE

This product contains software owned by Sony and licensed by third parties. Use of such software is subject to the terms and conditions of license agreements enclosed with this product. Some of the software may not be transported or used outside the United States. Software specifications are subject to change without notice and may not necessarily be identical to current retail versions.

Updates and additions to software may require an additional charge. Subscriptions to online service providers may require a fee and credit card information. Financial services may require prior arrangements with participating financial institutions.

Sony and VAIO are trademarks of Sony. The Intel Inside logo, MMX, and Pentium are registered trademarks of Intel Corporation. Microsoft, Windows, and the Windows 95 logo are trademarks of Microsoft Corporation. All other trademarks are trademarks or registered trademarks of their respective owners.

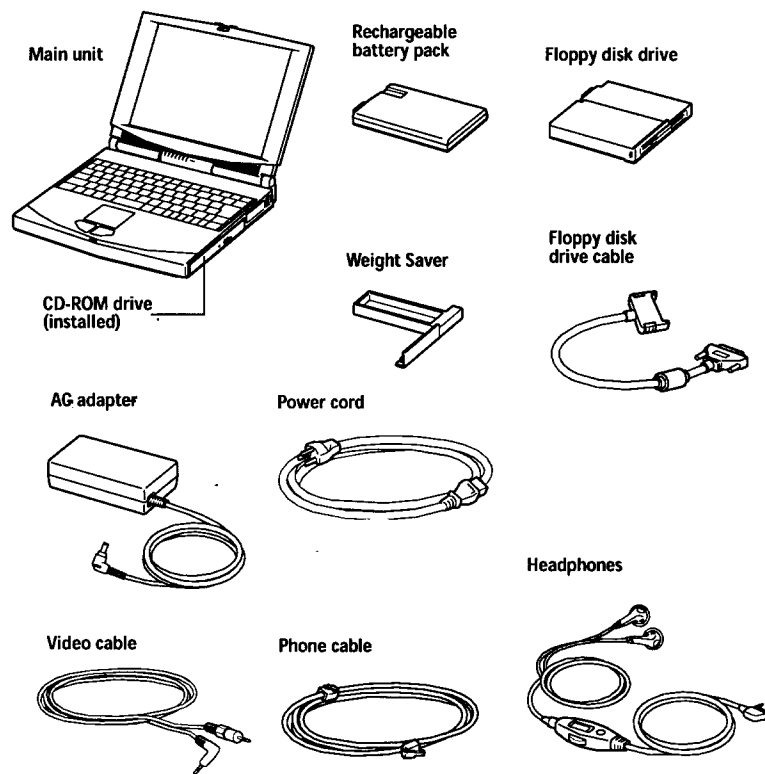
© 1997 Sony Electronics Inc. All rights reserved.

Reproduction in whole or in part without permission is prohibited.

About the Contents of Your Notebook Computer

Your Sony notebook computer includes the following items:

Computer and Supplied Accessories





Manuals

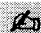
- ☐ *About Your Sony Notebook Computer* provides descriptions of your preinstalled software titles and the specifications for your Sony notebook computer.
- ☐ The *Sony Notebook Computer User Guide* describes how to set up your notebook computer, use and customize the Communication Center, find help, upgrade your computer, and accomplish basic computer tasks.
- ☐ *Introducing Windows® 95* explains how to use the basic features of the Windows 95 operating system.

Recovery Jewel Case

- ☐ System Recovery CD
- ☐ Application Recovery CD

Other

- ☐ Setting up your Sony notebook computer (poster)
- ☐ Packet containing special product offers

 Warranty information and the owner registration card are located with the Sony user manuals.

CD Album

The CD album contains the Microsoft software license agreement, Sony end-user license agreement, and the following CDs:

- ☐ CD EXTRA (Sony Music Entertainment Inc.)
- ☐ Microsoft® AutoMap® Streets Plus
- ☐ Microsoft® Golf
- ☐ Microsoft Windows® 95 Companion
- ☐ Quicken® Special Edition
- ☐ Sony Video CD-ROM Sampler
- ☐ SWIV3D™

About the Software on Your Sony Notebook Computer

Your Sony notebook computer is ready to help you work, play, learn, and communicate as soon as you turn it on. This section gives you an overview of the activities you can perform with your software titles.

For general information, call Sony Electronics at 888-4SONY-PC (888-476-6972).



Adobe® Acrobat® Reader 3.0

Adobe Systems Incorporated

Acrobat Reader software allows you to view, navigate, and print electronic documents in Adobe Portable Document Format (PDF), an open file format that is intended to preserve the fidelity of documents created on all major computer platforms. Once Acrobat Reader is installed, you can open and view PDF files from within your Web browser by clicking on a PDF file embedded in an HTML file. You quickly see the first page while the rest of the document is being downloaded. Use the Acrobat Reader to read the *Sony Notebook Computer User Guide* online (located in the Reference Library in the Sony Folder). For questions and technical assistance, go online at <http://www.adobe.com/>, e-mail techdocs@adobe.com (put "instructions" in the subject line to receive information about the service), fax 206-628-5737, or for fee-based support in the US call 206-628-2746 or 900-555-2200, M-F, 6 AM-5 PM PT.

Application Recovery CD

Sony Electronics

The Application Recovery CD allows you to reinstall individual applications and device drivers if they are corrupted or accidentally erased. Reinstalling an individual device driver or software title may correct a problem you are experiencing with your computer, and you may not need to recover the entire contents of your hard drive. See your *Sony Notebook Computer User Guide* for details. For questions and technical assistance, call Sony Electronics at 888-4SONY-PC (888-476-6972), 7 days a week, 24 hours a day.



America Online®

America Online

America Online is an online service with an intuitive interface. Use America Online to stay on top of the news and track your personal finances. Find support for computer products and download software and files. Read issues of your favorite magazines, take online accredited courses, connect with homework tutors, and chat with thousands of members. You also receive your own e-mail account. For technical support, call America Online at 800-827-3338, 7 days a week, 6 AM – 2 PM ET.

CD EXTRA

Sony Music Entertainment Inc.

CD EXTRA is the latest breakthrough in multimedia technology. Put this disk in a CD player and it will play like a regular compact disc. Put this disc in your CD-ROM drive and it becomes interactive with graphics, lyrics, discographies, and video. CD EXTRA includes audio and video samples from recent Sony Music releases. These samples include tracks from a wide variety of music styles, including rock, jazz, and easy listening. Bob Dylan, Keb' Mo', and Wynton Marsalis are featured with their biographies, interviews, video and music clips, interviews, discographies with title samples, and photos. For questions and technical assistance, call Sony Electronics at 888-4SONY-PC (888-476-6972), 7 days a week, 24 hours a day.



Communication Center

The Communication Center is a complete, powerful, flexible, yet simple-to-use communication system. Use it as a speakerphone and as a full-featured answering machine with multiple mailboxes and optional password protection. Speed dial frequently used numbers via the Phone Book. Send and receive faxes, e-mail, data files, and attach documents to your faxes. Additional features include voicemail, pager notification, and message forwarding. For questions and technical assistance, call Sony Electronics at 888-4SONY-PC (888-476-6972), 7 days a week, 24 hours a day.



Community Place™

Sony Electronics

Community Place is the first VRML-based (Virtual Reality Modeling Language) Internet web browser. VRML is the 3-D equivalent of HTML (HyperText Markup Language), converting the VRML language to a 3-D world of animated shapes, sights, and sounds. Use your mouse to travel between hyperlinked 3-D space objects. Share objects with multiple users. This version of Community Place is automatically invoked by Netscape Navigator when viewing VRML data. For questions and technical assistance, send e-mail to info@sm.sony.co.jp.

About the Software on Your Sony Notebook Computer



CompuServe Interactive (CSi)

CompuServe, Inc.

CSi is the most comprehensive source of organized business and educational information online today. CSi is the perfect choice for those who want access to the vastness of the Internet, but don't want to waste time wading through it. Let CSi maximize your time online. For technical support, call CompuServe at 800-848-8990, M-F, 8 AM-1 PM ET, S-S, 10 AM-10 PM ET.



Dr. Solomon's Anti-Virus

Dr. Solomon's Software Inc.

Dr. Solomon's Anti-Virus provides the most comprehensive and advanced line of defense against the spread of viruses. It specializes in virus protection for all applications in Microsoft Office 97, in addition to protecting against viruses spread via the Internet. It can scan compressed and archived files and automatically remove any file or macro virus it detects. For questions and technical assistance, go to <http://www.drsolomon.com>, e-mail support@us.drsolomon.com, or call 888-377-6566, 7 days a week, 24 hours a day.

DV Capture

Sony Electronics

Connect a digital video camera recorder to the DV In/Out connector on your network docking station and you can capture your own digital video images. DV Capture makes it easy to place your images into electronic albums and libraries. With the drop-and-drag interface, you can quickly move and copy your images between albums. You can also name each image and add a comment to help you find it later. For questions and technical assistance, call Sony Electronics at 888-4SONY-PC (888-476-6972), 7 days a week, 24 hours a day.



EasyPhoto™

Storm Technology, Inc.

EasyPhoto software provides a user-friendly, easy-to-install environment to input, organize, store, enhance, and use photos on a PC. EasyPhoto software enables users to build "galleries" of photos using a familiar film-strip metaphor for fast and simple display and retrieval. Once photos are sorted in the EasyPhoto Gallery, simply drag and drop them into any Windows-compliant application. Photo adjustments and improvements can also be made with the EasyPhoto software, such as removing red-eye, editing, dropping, and resizing. For questions and technical assistance, go online to <http://www.easypphoto.com>, or call 415-969-9555, 7 days a week, 7 AM-5 PM PST.



First Aid® 97 (Sony SOS Edition)

CyberMedia®

First Aid helps to intercept crashes caused by Windows® 3.1x and Windows® 95 applications, finds and fixes startup problems for Sony pre-installed applications, uses a knowledge base to find and fix additional problems, and automatically backs up your computer's critical configuration files. First Aid uses a three-step process specifically created for Sony that makes sure the user has the latest help information. First Aid is based on CyberMedia's AutoFix technology, which has solutions to over 10,000 known Windows software problems. For questions and technical assistance, call CyberMedia at 310-581-4710, M-F, 7:30AM-5PM PT.



Howdy!™

Alta Vista Technology, Inc.

Send e-mail with an attitude — send ME-mail! Use Windows-based Howdy! to create multimedia postcards complete with backgrounds, pictures, audio and text. Send them through your regular e-mail to friends, family, and coworkers, or simply click a button to send your postcard to the Web. ME-Mail someone today! For additional product information, contact Alta Vista Technology, Inc. at www.altavista.com or call 408-364-8777.



Internet Explorer for Windows® 95

Microsoft Corporation

Internet Explorer is the Internet browser included with Microsoft Plus! The Setup Wizard configures your computer to connect automatically to the service provider of your choice. A full e-mail package enables you to send and receive mail—including attached files—across the Internet. If you do not currently have a service provider, Internet Explorer connects you to the Internet using MSN, The Microsoft Network™. A complete online tutorial helps new users become comfortable using the Internet. For questions and technical assistance, go online to <http://www.microsoft.com/support/>, or call Sony Electronics at 888-4SONY-PC (888-476-6972), 7 days a week, 24 hours a day.



LapLink® for Windows® 95

Traveling Software

LapLink for Windows 95 provides one-step remote access to your desktop PC. The 32-bit application allows you to run databases and custom applications, transfer files, synchronize data, read and send e-mail and remotely control your desktop PC even over the Internet. You can link to computers with permanent IP addresses across the Internet. Integrated with SpeedSync® technology, LapLink features fast file transfers. LapLink supports modems, cables, wireless, TCP/IP or IPX networks and Windows® 95 Dial-Up networking. Your software license for LapLink allows you to install the software on your office and home desktop systems. Follow the instructions for using the System Recovery CD to install additional copies. While installing, you are prompted for the serial number (lw70-sonypc-us) and lot number (sony). For questions and technical assistance, call Sony Electronics at 888-4SONY-PC (888-476-6972), 7 days a week, 24 hours a day.



Microsoft® AutoMap® Streets Plus

Microsoft Corporation

Streets Plus can locate addresses, streets, small towns, or major cities in the United States, taking the guesswork out of getting where you need to go. You can zoom in to a desired scale and adjust the level of detail to suit your needs. The Pushpin feature allows you to import your address book from most popular spreadsheet and database programs and plots the entries on the map. Streets Plus provides links to information on 425 cities and places, and you can build your own Internet links. You can also add listings from the ABI American Yellow Pages to your maps. Streets Plus includes more than 280,000 restaurants and 12,000 hotels, and integrates with Microsoft Automap Trip Planner (available separately). For questions and technical assistance, go online to <http://www.microsoft.com/automap/>, or call Sony Electronics at 888-4SONY-PC (888-476-6972), 7 days a week, 24 hours a day.



Microsoft® Golf

Microsoft Corporation

Microsoft Golf is now better than ever with a lightning-fast Windows® 95-based game engine, superior graphics, and a realistic feel from the texture of the fairways to the birds singing in the trees. High resolution graphics reproduce the stunning scenery of courses such as Banff Springs in Alberta and Harbour Town in South Carolina. You can decide to play against others via modem or network connections, or create and edit "smart" computer opponents. Experiment with clubs and shot types, and get playing tips from the Pros. You can choose from four different views of each hole: behind the green, a bird's eye view, from the tee, and a side profile. For questions and technical assistance, go online to <http://www.microsoft.com/sports/golf/>, or call Sony Electronics at 888-4SONY-PC (888-476-6972), 7 days a week, 24 hours a day.



Microsoft® Money 97

Microsoft Corporation

Display the status of your checking and savings accounts or check your loan and credit card balances. The software reminds you when it's time to pay a monthly bill and offers you the option to print your own checks or, if you make arrangements with your financial institution, pay the bills electronically. You can also prepare budgets and plan your financial future. Wizards help you set up new accounts, and online banking enables you to bank from home. For questions and technical assistance, go online to <http://www.microsoft.com/support/>, or call Sony Electronics at 888-4SONY-PC (888-476-6972), 7 days a week, 24 hours a day.

Microsoft® Plus!

Microsoft Corporation

Microsoft Plus! is a companion to Windows 95. Plus! helps you access the Internet and tune your PC, performing tasks such as disk optimization and error correction. In addition, Plus! provides 12 colorful desktop themes and the 3-D Pinball game. For questions and technical assistance, go online to <http://www.microsoft.com/support/>, or call Sony Electronics at 888-4SONY-PC (888-476-6972), 7 days a week, 24 hours a day.



Microsoft® Works

Microsoft Corporation

Microsoft Works is a suite of productivity tools that includes a word processor, spreadsheet, database, and drawing and communications software. You can use these tools to create professional documents quickly and easily. For questions and technical assistance, go online to <http://www.microsoft.com/support/>, or call Sony Electronics at 888-4SONY-PC (888-476-6972), 7 days a week, 24 hours a day.



Music/Movie Player

The Music/Movie Player allows you to play audio and video CDs in the CD-ROM drive or play audio or video files in various formats on your hard drive. For questions and technical assistance, call Sony Electronics at 888-4SONY-PC (888-476-6972), 7 days a week, 24 hours a day.



Netscape Navigator® Personal Edition

Netscape Communications

Netscape Navigator gives you easy access to all major Internet resources. Browse ever-growing sources of information on commerce, current events, travel, entertainment, and more. Netscape Navigator is the most widely used World Wide Web browser in the world. For questions and technical assistance, call Sony Electronics at 888-4SONY-PC (888-476-6972), 7 days a week, 24 hours a day.



Oil Change™ (Sony SOS Edition)

CyberMedia®

Oil Change software is a useful companion to Sony Online Support (SOS). Using the Internet, it provides the latest device drivers, software fixes and updates provided by Sony for the software titles included with your Sony notebook computer. Oil Change scans your computer to identify software applications and their versions. It then logs on to the Internet, compares your software configuration against the Sony database, and notifies you of the software fixes and updates available for your computer. For each fix and update, it provides an explanation. After selecting the software fixes and updates you require, Oil Change downloads, uncompresses, and installs the selected items. For questions and technical assistance, call Sony Electronics at 888-4SONY-PC (888-476-6972), 7 days a week, 24 hours a day.



Quicken® Special Edition

Intuit, Inc.

Quicken Special Edition helps you manage your personal and small business finances. The software resembles your checkbook, so it's easy to learn and easy to use. You can print checks, reconcile your bank account, and complete bank transactions from home. Quicken Special Edition's charts and graphs show you account balances and where your money goes. For questions and technical assistance, call Quicken at 505-896-7222, M-F, 6 AM-6 PM MT.



Sidekick® 97

Starfish Software

The number one personal organizer that keeps you on top of your schedule, client contacts, expenses, receipts, correspondence, telephone calls, and world time. Sidekick prints pages that fit into popular organizers from companies such as Day-Timer™, Day Runner®, Franklin®, and Filofax®. For questions and technical assistance, call Starfish Software at 900-555-1010 (charges appear on your phone bill) or 800-953-9995 (charges appear on your credit card), M-F, 6 AM-5 PM PT.

Sony Digital Still Camera TWAIN Software

Sony Electronics

If you use a Sony digital still camera with your Sony PC, the software for acquiring images is already installed. Try PhotoDeluxe, included in your software bundle, to acquire images from your camera. For questions and technical assistance, call Sony Electronics at 888-4SONY-PC (888-476-6972), 7 days a week, 24 hours a day.



Sony PC Help Library

Sony Electronics

Sony PC Help Library gives you access to online user guides and help files for the software on your Sony PC. For questions and technical assistance, call Sony Electronics at 888-4SONY-PC (888-476-6972), 7 days a week, 24 hours a day.



SWIV3D™

SCi Ltd.

SWIV stands for Special Weapons Interdiction Vehicle. This is a "shoot'em up" action and arcade game that lets you control six unique vehicles. The vehicles of destruction include a helicopter gunship, four wheel drive armored buggy, a skidoo, a hover craft, and more. The game features unrelenting action with the ability to animate over 100 objects simultaneously. Everything on the screen can be shot with ultra-destructive weapons such as smart bombs, multifire missiles, and napalm rockets. SWIV3D supports Intel's MMX chipset. For questions and technical assistance, go online to <http://www.interplay.com>, ftp to <ftp.interplay.com>, email support@interplay.com, or call 714-553-6678, 7 days a week, 24 hours a day.

System Recovery CD

Sony Electronics

The System Recovery CD allows you to restore the software titles that shipped with your computer if they become corrupted or are erased accidentally. **It can be used only to restore the hard disk of the Sony notebook computer you purchased.** See your *Sony Notebook Computer User Guide* for details. For questions and technical assistance, call Sony Electronics at 888-4SONY-PC (888-476-6972), 7 days a week, 24 hours a day.



Video CD-ROM Sampler

Sony Pictures Entertainment

The Video CD Sampler presents trailers from recent movies now available on home videos and distributed by Columbia Tristar Home Video®. Also includes trailers from current popular television programs distributed by Columbia Tristar Television Distribution™. This software features "Sony Tuned" MPEG1 Digital Video. For questions and technical assistance, call Sony Electronics at 888-4SONY-PC (888-476-6972), 7 days a week, 24 hours a day.

Specifications

Model Number	PCG-717C	PCG-719C
Processor	200 MHz Pentium® with MMX™ technology	233 MHz Pentium® with MMX™ technology
Hard Disk Drive	2.1 GB (removable)	
Standard RAM	32 MB SDRAM, expandable to 128 MB	32 MB SDRAM, expandable to 128 MB
LCD Screen	12.1" SVGA Active Matrix (800x600)	12.1" XGA Active Matrix (1024x768)
L2 Cache Memory	512 KB Pipeline Burst SRAM	
MPEG	"Sony Tuned" MPEG1 Digital Video supports full-screen playback	
Graphics	128-bit accelerator with 2 MB Video RAM	
Sound Capabilities	16-bit CD-quality stereo sound	
Diskette Drive	Removable 3.5" 1.44 MB Internal and External Operation (cable included)	
CD-ROM Drive	Removable 14.5X (max. performance)* Playback control by headphones with remote control (included)	
Modem	Built-in 33.6 kbps data/ 14.4 kbps fax	
Infrared	Supports 4 mbps and 115 kbps IrDA Standard	
Drive Bay	Supports CD-ROM drive (included) Supports floppy disk drive (included) Supports second rechargeable battery (optional)	
Expansion Capabilities	Two PCMCIA type II Cards One Type 3 Card Zoomed Video and Card Bus support	
Built-In Capabilities	Microphone Stereo speakers Digital touch pad	
Telecommunication Capabilities	Full duplex speakerphone Answering machine functionality with personal mailboxes Fax send/receive	

Model Number	PCG-717C	PCG-719C
Connection Capabilities	Serial COM1 USB port† Keyboard/mouse (PS/2-style) VGA monitor Docking station Parallel (printer)/floppy disk drive Video out (NTSC/PAL) Phone line (RJ-11) Headphone with remote control Microphone Audio line in	
Supplied Accessories	CD-ROM drive Floppy disk drive Floppy disk drive cable Rechargeable battery AC adapter and power cord Phone cable Headphones with remote control Video cable Weight saver	
Service	One-year limited express service‡	
Limited Warranty	One-year parts/labor standard‡	
Power Requirements	65 watts maximum (19.5V DC/AC120-240V)	
Power Management	Energy Star compliant Advanced power management (APM) version 1.2	
Battery	Lithium ion, supports dual battery operation	
Dimensions	11.8" (w) x 1.5" (h) x 9.46" (d) (297 x 37.6 x 236 mm)	
Weight	5.3 lbs. (2.4kg) (with battery and weight saver) 5.5 lbs. (2.5kg) (with floppy disk drive and battery) 5.75 lbs. (2.7 kg) (with CD-ROM drive and battery)	
Operating Temperature	40° F to 95° F (+5° C to 35° C)	

* Data on a CD-ROM is read at a variable transfer rate, ranging from 7.5x at the innermost track to 14.5x at the outermost track (the data transfer standard 1x rate is 150 kbytes/s). The average data transfer rate is 12x or 1800 kbytes/s.

† USB ports are included to provide state-of-the-art technology. You may need to install software (device drivers) supplied with your USB device before using the USB device.

‡ Certain restrictions apply.

Specifications are subject to change without notice.