

SONY[®]

3-800-860-11(1)

Computer and Home AV System Interface

Operating Instructions

CAV-1

CAV-2

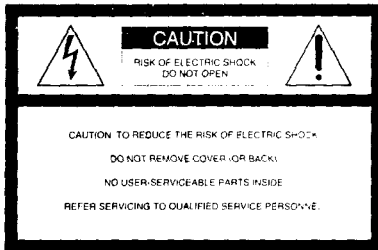
© 1996 by Sony Corporation

WARNING

To prevent fire or shock hazard, do not expose the unit to rain or moisture.

To avoid electrical shock, do not open the cabinet. Refer servicing to qualified personnel only.

For the customers in the United States



This symbol is intended to alert the user to the presence of uninsulated "dangerous voltage" within the product's enclosure that may be of sufficient magnitude to constitute a risk of electric shock to persons.



This symbol is intended to alert the user to the presence of important operating and maintenance (servicing) instructions in the literature accompanying the appliance.

Owner's Record

The model and serial numbers are located on the bottom of the unit.

Record the serial number in the space provided below. Refer to them whenever you call upon your Sony dealer regarding this product.

Model No. CAV-1/CAV-2

Serial No. _____

Note to CATV system installer:

This reminder is provided to call CATV system installer's attention to Article 820-40 of the NEC that provides guidelines for proper grounding and, in particular, specifies that the cable ground shall be connected to the grounding system of the building, as close to the point of cable entry as practical.

INFORMATION

This equipment has been tested and found to comply with the limits for a Class B digital device, pursuant to Part 15 of the FCC Rules. These limits are designed to provide reasonable protection against harmful interference in a

residential installation. This equipment generates, uses, and can radiate radio frequency energy and, if not installed and used in accordance with the instructions, may cause harmful interference to radio communications. However, there is no guarantee that interference will not occur in a particular installation. If this equipment does cause harmful interference to radio or television reception, which can be determined by turning the equipment off and on, the user is encouraged to try to correct the interference by one or more of the following measures:

- Reorient or relocate the receiving antenna.
- Increase the separation between the equipment and receiver.
- Connect the equipment into an outlet on a circuit different from that to which the receiver is connected.
- Consult the dealer or an experienced radio/TV technician for help.

This device complies with Part 15 of the FCC Rules. Operation is subject to the following two conditions:
(1) This device may not cause harmful interference, and (2) this device must accept any interference received, including interference that may cause undesired operation.

CAUTION

You are cautioned that any changes or modifications not expressly approved in this manual could void your authority to operate this equipment.

Overview

The CAV-1 is an interface device that allows you to use a hand-held wireless mouse and a personal computer to control multiple audio and video program sources and electrical equipment. The CAV-1 consists of three parts: a wireless mouse (Air-EGG), an interface box (CAV-10R), and CD-ROM control software. The CAV-2 is identical to CAV-1, but comes with an interface box (CAV-10E) and CD-ROM control software only. The following parts are provided on the CAV-10R, but not the CAV-10E:

- PS/2 connector
- ADB connector
- PC-98 connector (unused in North America)
- Air-EGG battery indicator
- Security switch

The CAV-1/CAV-2 is available for both the Macintosh and Windows operating systems.

Below are some of the features of the CAV-1/CAV-2.

On-screen operations

You can control audio and video program sources through on-screen computer operations.

Controlling non-Sony electrical equipment

You can control audio and video program sources made by manufacturers other than Sony, as well as electrical equipment with infrared remote control capability.

Macro Play

Macro Play allows you to operate several electrical devices, automatically and sequentially.

Three ways to access CDs in a CD changer

You can access CDs by number, genre, or artist.

Macintosh and ADB (Apple Desktop Bus) are registered trademarks of Apple Computer, Inc. Windows is a trademark of Microsoft Corporation. IBM and PS/2 are registered trademarks of International Business Machines, Inc. Other product and corporate names may be trademarks or registered trademarks of other companies.

TABLE OF CONTENTS

Introduction

- Operating Configuration of the CAV-1/CAV-2 6
- Using the CAV-1/CAV-2 7
- Precautions 8

Preparation

- Unpacking 9
- How to Use the Air-EGG (CAV-1 Only) 10
- Major Parts and Their Use 12
- Hooking Up the System 13
- Preventing Interference When Using Two or More Air-EGGs (CAV-1 Only) 15
- Installing the CD-ROM Control Software 15

Basic Setup

- Starting the Software 17
- Changing Icons 17
- Creating New Function Icons 17
- Installing IR Codes 18
- Adding New Buttons 20

Operations

- Operating Electrical Equipment 21
- Starting Program Sources and Other Electrical Equipment Automatically and Sequentially — Macro Setting 23

CD Changer Operations

- Playing a CD in the CD Changer 24
- Creating the Database 25
- Playing multiple CDs sequentially — Program Play 28
- Selecting Your Favorite CDs — Favorite CD 29

Additional Information

- Troubleshooting Guide 30
- Specifications 31

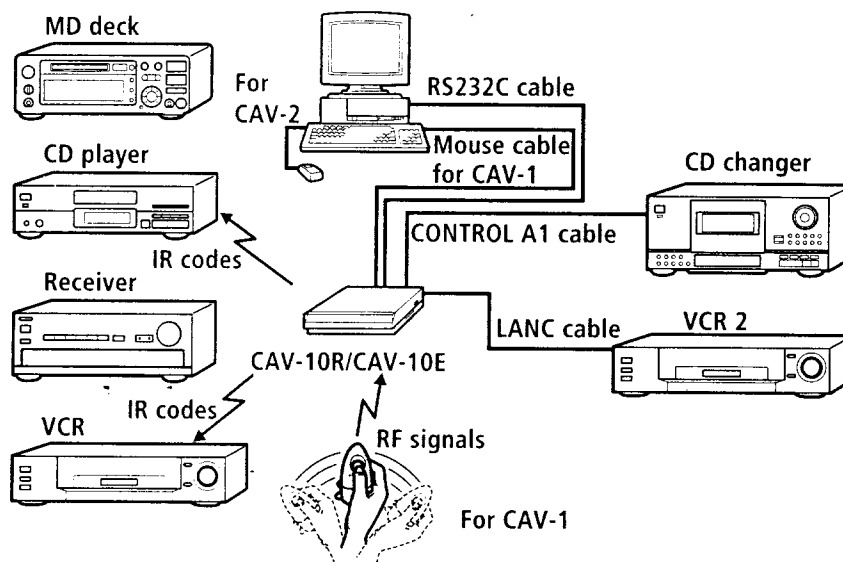
Index 32

Operating Configuration of the CAV-1/CAV-2

Since the CAV-10R uses a built-in receiving antenna and a wireless mouse (Air-EGG) to transmit radio frequency (RF) signals, steel beams within walls, PCs, monitors, or other metallic objects may interfere with signal reception by the CAV-10R. To prevent this, keep the interface box at least 20 inches (about 50 cm) away from all metallic objects.

The CAV-1/CAV-2 operating configuration

The illustration below shows the CAV-1/CAV-2 operating configuration. With the CAV-2, you control on-screen operations with the mouse that comes with your computer.



Remote control operations with the CAV-1

The wireless mouse (Air-EGG) emits signals that correspond to those of the computer's mouse, and can thus be used to control on-screen operations. Signals from the Air-EGG to the interface box are radio frequency (RF) signals, and are unaffected by objects standing between the Air-EGG and the interface box.

Pre-stored IR code sets in the interface box

The infrared (IR) code sets of AV equipment made by Sony and other manufacturers come pre-stored in the interface box, giving you almost immediate control of your AV equipment through the Air-EGG and on-screen button operations.

Using the CAV-1/CAV-2

You can use your CAV-1/CAV-2 to control AV products made by Sony, most AV products made by other manufacturers, and other types of equipment with infrared remote control capability, such as lighting equipment, projection screens, and motorized curtains. If the IR codes for a particular device are not included among those pre-stored in the interface box, you must install them manually using the device's remote commander.

Note

Since control codes pre-stored in the interface box correspond to those emitted by remote commanders, your CAV-1/CAV-2 can control only electrical equipment with remote commander capability. Equipment without this capability, such as power amplifiers, must be turned on and off manually.

Introduction

Precautions

On safety

- Operate the unit only on 120 V AC, 60 Hz.
- Should any solid object or liquid fall into the cabinet, unplug the unit and have it checked by qualified personnel before operating it any further.
- Unplug the unit from the wall outlet if it is not to be used for an extended period of time. To disconnect the cord, pull it out by grasping the plug. Never pull the cord itself.
- One blade of the plug is wider than the other for the purpose of safety and will fit into the power outlet only one way. If you are unable to insert the plug fully into the outlet, contact your dealer.

Do not install the unit:

- near heat sources such as radiators or air ducts.
- in a place subject to direct sunlight, excessive dust, mechanical vibration or shock.

Do not throw away the carton and packing material

It will be an ideal container when transporting the system for repair work, etc.

On operation

Before making program source and personal computer connections, be sure to turn the power switch off and unplug the unit.

On cleaning the cabinet

Clean the cabinet, and panel with a soft cloth lightly moistened with mild detergent solution. Do not use any type of abrasive pad, scouring powder, or solvent such as alcohol or benzene.

For the customers in the U.S.A.

For detailed safety precautions, see the "IMPORTANT SAFEGUARDS" leaflet.

If you have any question or problem concerning your unit, please consult your nearest Sony dealer.

Unpacking

Checking the supplied items

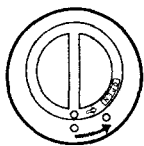
After unpacking, verify that you have received the following parts:

- Interface box (CAV-10R for CAV-1, or CAV-10E for CAV-2) (1)
- Wireless mouse (Air-EGG) (CAV-1 only) (1)
- CD-ROM control software (1)
- Sony SUM-3 (NS) batteries (CAV-1 only) (2)
- Mouse cable for PS/2 (CAV-1 only) (1)

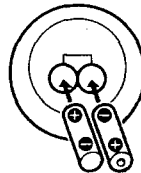
Inserting batteries into the Air-EGG (CAV-1 only)

The Air-EGG battery indicator (see page 12) will flash when you insert the batteries.

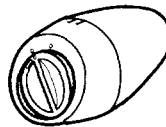
- 1 Open the cover.



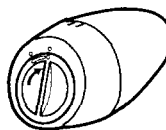
- 2 Insert two size-AA (R6) batteries with correct polarity.



- 3 Close the cover.
Hold down the cover. (The cover will be a little uneven.)



Turn the cover to the right. The cover locks.



Note

After inserting the batteries into the Air-EGG, leave it undisturbed on a flat surface for a few seconds to allow the internal circuitry to calibrate. The battery indicator stops flashing when calibration is over.

Preparation

To avoid damage by battery leakage and corrosion

Remove the batteries from the Air-EGG if it will not be used for a long time.

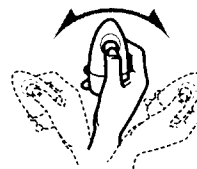
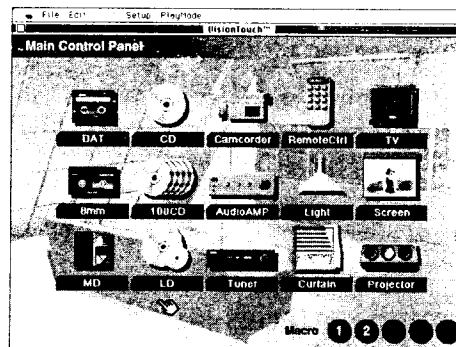
Battery life

- About three months of normal operation can be expected using Sony SUM-3 (NS), and a half year using Sony AM-3 (NW) alkaline batteries. Since the Air-EGG consumes power whenever you pick it up and perform on-screen operations, the service life of the batteries may be less than three months, depending on the amount of use.
- The Air-EGG battery indicator (see page 12) lights up when the batteries become weak.

How to Use the Air-EGG (CAV-1 Only)

The Air-EGG's gyroscopic positioning system eliminates the need to point the Air-EGG directly at the interface box to operate the on-screen pointer. You can thus control the pointer even while holding the Air-EGG with your arms folded and the Air-EGG pointed towards the side.

To move the pointer on the screen, lightly hold down the click button on the Air-EGG (see page 12). To activate a button or select a menu item on the screen, press the click button further.



Note

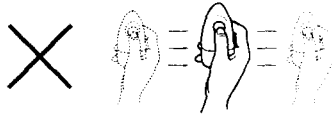
- The Air-EGG can be operated up to about 17 feet (5m) from the interface box. This distance, however, may be shortened if there are metal objects near the interface box or Air-EGG.
- The Air-EGG is most suitable for control during controlling equipment through the control software or during presentations but not for the precision control required in games.

Hints on handling the Air-EGG

- A slight move of the wrist is all you need to direct the pointer (see illustration on the previous page).
- Hold the Air-EGG with its "click" button facing up, as shown below. If the click button is oriented diagonally, the on-screen pointer will also be oriented diagonally.



- The Air-EGG will not operate if you move it parallel as shown below.



- If the pointer has not reached the desired point by the time you finish moving the Air-EGG, release the click button, move the Air-EGG back, lightly hold down the click button, then continue moving the pointer again.

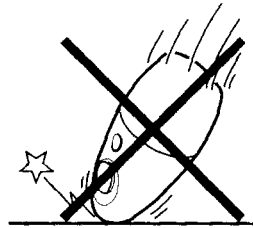
Notes

- If the pointer begins drifting on the screen while the Air-EGG is stationary, place the Air-EGG on a flat surface for a few seconds. The pointer should behave normally when you operate the Air-EGG again.
- The pointer may drift when it is used for more than 5 continuous minutes. It also may drift due to changes in the surrounding temperature.

- If the pointer response is too sensitive, do the procedure in "To adjust the Air-EGG" on this page.
- The pointer freezes on the screen when you release the click button.

Caution

Since the Air-EGG contains delicate circuitry and parts, do not subject it to sudden changes in temperatures or to shock.

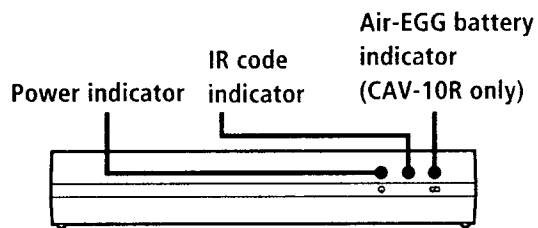


To adjust the Air-EGG*

- Adjusting the sensitivity of the Air-EGG.
Press **F7** or **F8** while holding down the control key. The sensitivity of the Air-EGG can also be adjusted by adjusting the mouse sensitivity on the PC.
 - Adjusting the steadiness of the Air-EGG while being held.
Press **F9** or **F10** while holding down the control key. Note that poor response may result when the steadiness of the Air-EGG is set too high.
- * This function is available only when the RS232C cable is connected.

Preparation

Major Parts and Their Use/Interface box



Power indicator

This indicator lights up when the interface box is turned on.

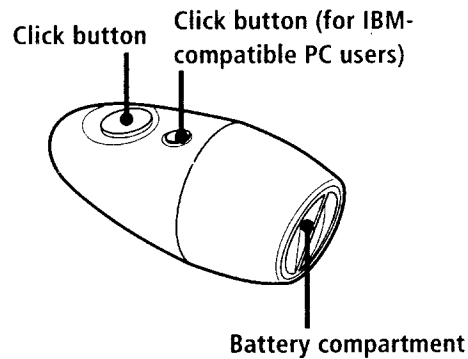
IR code indicator

This indicator lights up whenever an IR code is emitted from the interface box.

Air-EGG battery indicator

This indicator flashes when you are inserting batteries, and lights up when batteries are weak.

Air-EGG



Click button

This button has two levels.

Hold down slightly to move the pointer. Press further to activate a button or select a menu item on the screen. Releasing the button freezes the pointer.

Click button (for IBM-compatible PC users)

This button functions the same as the right button of the IBM-compatible PC mouse, but is non-functional for Macintosh users.

It is not used for dragging.

Battery compartment

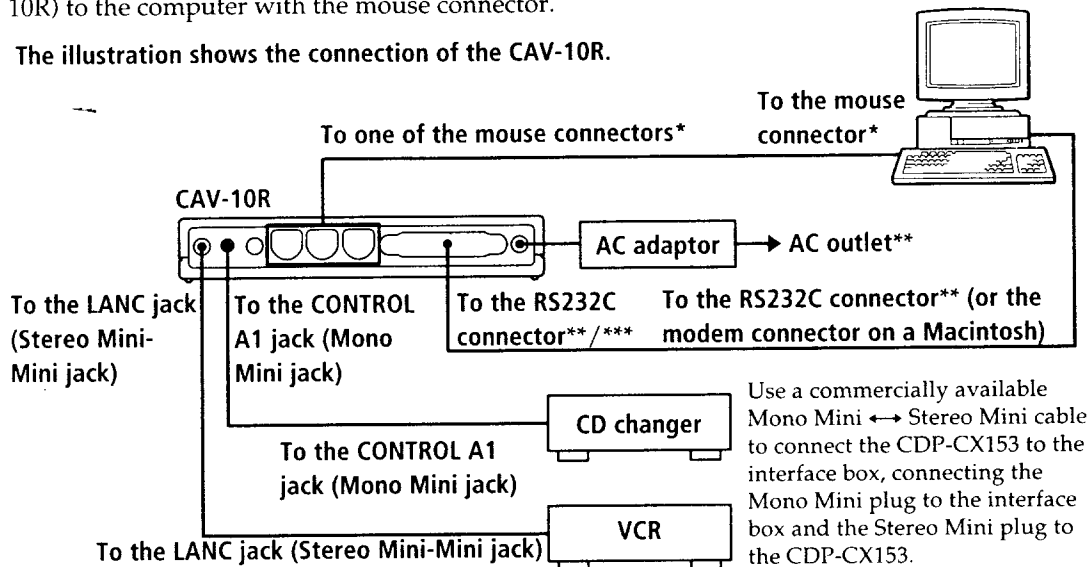
Insert batteries here.

Hooking Up the System

Be sure to turn off the power to each unit before making any connections.

The "Basic Setup" procedure on pages 17 to 20 is more easily performed using the mouse that came with your computer. After completing the basic setup, connect the interface box (CAV-10R) to the computer with the mouse connector.

The illustration shows the connection of the CAV-10R.



* Use the supplied cable or a commercially available S cable (for a Macintosh).

** The above cable connections are unnecessary when you use the Air-EGG as a mouse substitute only.

*** In case of an IBM-compatible PC, the port can be selected through the Serial Setup menu (selected from the Setup menu while the Main Control Panel is displayed). The default port setting is COM2.

Preparation

Connecting the interface box to your computer

Use the procedure below to connect your CAV-1/CAV-2 to a personal computer that uses the Macintosh or Windows operating system. The CAV-1 Air-EGG can be used with personal computers that have a PS/2 or ADB mouse connector.

- 1** Connect the RS-232C straight-type interface cable.
For Macintosh users, connect the cable to the computer's modem connector.
- 2** Connect the mouse cable (CAV-1 only).
Connect the cable to the PS/2 or ADB mouse connector, depending on the type of your mouse.

Connecting the interface box to a VCR and Sony CD changer

You can connect your interface box to any Sony CD changer with a CONTROL A1 jack (Mono Mini jack) and to a VCR with a LANC jack (Stereo Mini-Mini jack). Information from the CD changer and time information from the VCR will appear on your computer screen.

To connect a CD changer

Connect the CD changer to the interface box with a CONTROL A1 cable (Mono Mini cable).

To connect a VCR

Connect the VCR to the interface box with a LANC cable (Stereo Mini-Mini cable).

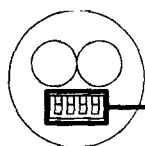
Connecting the AC adapter

Connect the AC adapter to the interface box first, then to an AC outlet.

Preventing Interference When Using Two or More Air-EGGs (CAV-1 Only)

If you use two or more CAV-1 at the same time, interference between the RF signals may occur, causing the interface boxes to operate erratically. To prevent this, you can give each Air-EGG a unique identification (security setting) to allow RF signals from one Air-EGG to be distinguished from those of another. Follow the procedure below to assign a security setting to each Air-EGG.

- 1** Open the battery compartment on the Air-EGG and remove the batteries. You will see a set of security switches as shown below.



Security switches

- 2** Set the security switches. Use a pointed object to flip up each switch according to the security setting to be assigned to that Air-EGG.

- 3** Set the security switches on the front-right of the interface box to the same security setting as its Air-EGG.

Installing the CD-ROM Control Software

To install the CD-ROM control software, your computer's operating system must be version 7.1 or later (for a Macintosh), or Windows 3.1 or later (for an IBM-compatible PC).

Use of the Air-EGG as a mouse substitute, however, does not require installation of the control software.

- 1** Turn on the computer and the interface box (CAV-10R/CAV-10E).
- 2** Insert the CD-ROM into your CD-ROM drive. The icon for installing the software appears.

(Continued)

Preparation


3 On a Macintosh

Copy the whole folder to your hard disk.

On an IBM-compatible PC

Activate the installer. Specify the directory to which the control software should be installed, and click on the Start button.

Starting the Software

Double click on the  icon.

If you are using the software for the first time, enter a user name, then click on the OK button.

Changing Icons

Up to 15 icons can be displayed on the Main Control Panel at one time. Use the procedures below to freely replace and reposition any of the icons.

- 1 Select Function... from the Setup menu.
The Function Select menu appears.
- 2 Double click on the icon to be displayed on the Main Control Panel.
The icon is depressed. Icons that are not depressed do not appear on the Main Control Panel.

To return to the Main Control Panel
Click on Exit.



Icons can be deleted from the Main Control Panel

Click on the icon to be deleted, then press the delete key on the keyboard.



To exit menus selected from the Setup menu (On a Macintosh only)

Click on the Exit button or press the esc (escape) key on the keyboard.

Creating New Function Icons

You can copy an icon, change its name, and add it to the Function Select menu. You can also add your own custom graphics to create a new icon.

- 1 Select Function... from the Setup menu.
The Function Select menu appears.
- 2 Click on the icon you want to copy.
The icon lights up purple.
- 3 Click on Copy.
The New Function menu appears..
- 4 Enter the new name of the icon on the keyboard.

(Continued)

Basic Setup

5 Click on Enter.

The newly named icon is added to the Function Select menu.

To rename an icon

Click on current name of the icon, then enter the new name on the keyboard.

To delete a copied icon

Click on the icon, then on Delete.

To create a new icon

The custom graphics to be used must be saved in the PICT file format (in case of a Macintosh) or the BMP file format (in case of a IBM-compatible PC).

1 Read the graphical data into the clip board.

2 Click on the icon you want to change.

The icon lights up purple.

3 Click on Copy.

4 Click on Load.

5 Enter the new name on the keyboard.

6 Click on Enter.

Note

Some IR codes for buttons, such as vol -/+ , 1~0/10, and Enter on TV sets and those of certain manufacturers, may not function.

For a Sony product or a TV set, laser disc player, or VCR made by another manufacturer

1 Select Function... from the Setup menu.
The Function Select menu appears.

2 Click on the icon of the device so that it presses down and lights up purple.

3 Click on Enter.
The Function-IR Setting menu appears along with the device's control panel.

4 Select SONY from the Maker/Format menu below Command Set if the device is a Sony product, or the name of the manufacturer if it is not a Sony product.

5 Select the product category from the Category menu.

Installing IR Codes

Before you can use your CAV-1/CAV-2 to remotely control electrical equipment, you must first install the IR codes for the equipment to be used.

If more than one set of IR codes is available from the same manufacture (such as Sony VTR 1 and VTR 2), choose the set here.

The IR code set for the device is automatically installed.

To confirm that the IR code has been installed, press the button on the device's control panel on the left and see if the IR code is installed.

Note

- The IR codes of some remote commanders may not be successfully installed even if "OK" has appeared.
- If your VCR is connected to the interface box with a LANC cable, select LANC from the Maker/Format menu. Under this setting, the power button will not operate.
- When using a Sony CD changer connected through the CONTROL A1 cable, click on 100CD in the Function Select menu and select Control A1 from the Maker/Format menu (or Control A if your Sony CD changer is the CDP-CX153). Then select the number of the CD changer (CD1 or CD2) from the Category menu. The CDP-CX151 does not operate when it is connected through the CONTROL A1 cable.

- The IR codes of some Sony AV amplifiers (including receivers), and audio amplifiers may differ from the pre-installed codes in the interface box. As a result, the devices will not operate even after you have installed the IR codes. If this occurs, do the procedure in "To install IR codes not included in your CAV-1/CAV-2" on this page.
- All IR codes that you have installed will remain effective for a few days even if the AC adaptor is disconnected.

To install IR codes not included in your CAV-1/CAV-2

- 1** Do steps 1 to 3 of "For a Sony product or a TV set, laser disc player, or VCR made by another manufacturer".
- 2** Select Other from the Maker/Format menu below Command Set. All buttons light up purple.
- 3** Click on Learning.
- 4** Click on any one of the buttons whose IR code is to be installed. The button is depressed.

(Continued)

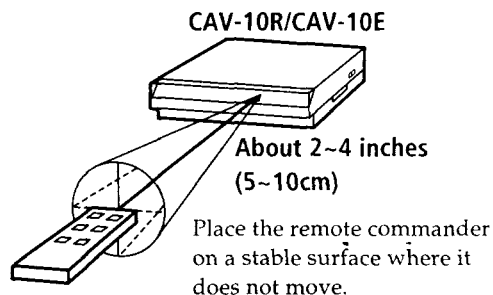
Basic Setup

5 Install the IR code.

Point the remote commander of the device directly towards the front of the interface box from a distance of about 2~4 inches (5~10 cm) and hold down the corresponding button on the commander until "OK" appears on the screen. When "OK" appears, the next button is depressed.

Repeat this procedure to install the IR code for the remaining buttons.

You can install up to about 120 IR codes.



To end the procedure

Click on End.

To erase all installed IR codes

Click on All Clear. All the installed IR codes of all devices will be cleared.

Adding New Buttons

You can add up to eight new buttons to those that are pre-installed in the interface box.

After adding a new button, you must install its IR code before it will operate (see "Installing IR codes" on page 18).

- 1 Do steps 1 to 3 of "For a Sony product or a TV set, laser disc player, or VCR made by another manufacturer" on page 18.
- 2 Click on Add below Button Customize.
- 3 Enter the name of the button on the keyboard.
The letters appear to the right of Naming. The name can be up to eight letters in length.
- 4 Repeat steps 2 and 3 to add more buttons.

To delete an added button

Click on the button you want to delete, then on Delete.

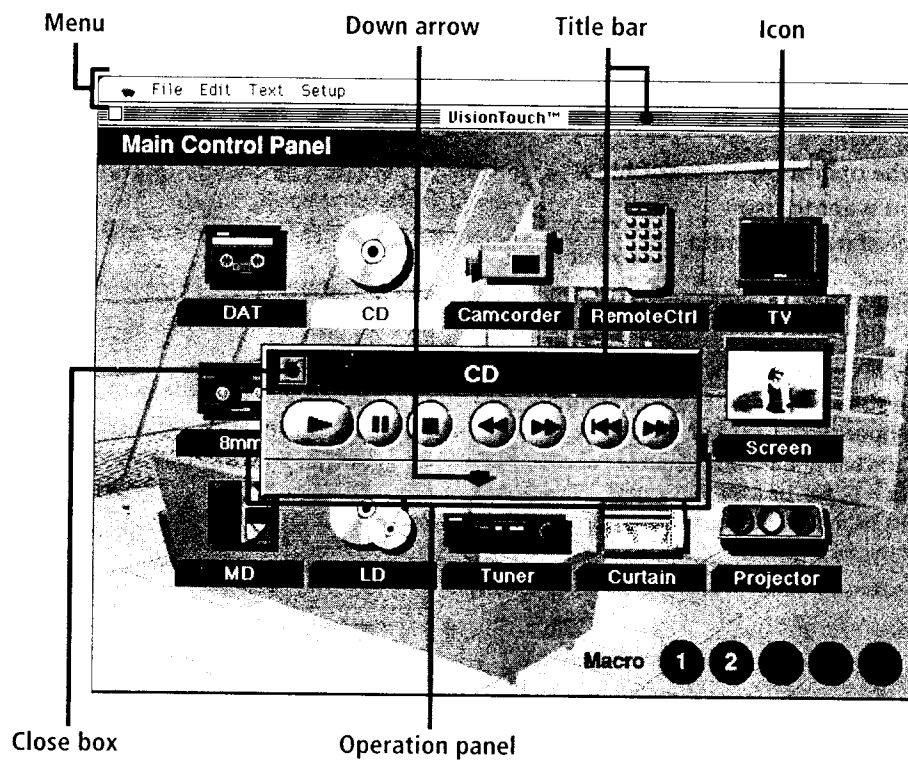
To end the procedure

Click on Exit.

Operations

Operating Electrical Equipment

You can operate electrical equipment whose IR codes have been installed (see "Installing IR Codes" on page 18).



Up to three panels can be displayed at the same time. (Continued)


Operations

- 1 Double click on the icon on the Main Control Panel of the electrical device you want to control.

The operation panel of the device appears. If you want to operate an additional electrical device, double click on its icon. Up to three operation panels can be displayed at the same time.

- 2 Click on the operation buttons of the device you want to use.
The device starts to operate.

To see more operation buttons
Click on the down arrow.

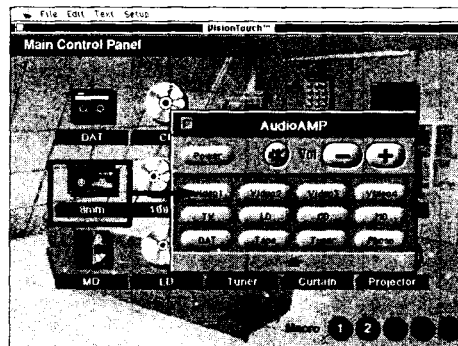
-  **To change the position of the Main Control Panel, an operation panel or an icon**
Drag the title bar of the Main Control Panel, the operation panel, or icon to the new position. Icons, however, cannot be positioned outside of the boundaries of the icon area.



Device operation can be set to begin immediately after its operation panel appears

Select Auto Play On from the Setup menu. To cancel the function, click on Auto Play On again to deselect it. To use this function on camcorders or other devices, you must do the following procedure.

- 1 Double click on the AudioAMP icon to open the AudioAMP operation panel.
- 2 Drag the icon of the device onto one of the buttons. The button changes to the name of the device.



Starting Program Sources and Other Electrical Equipment Automatically and Sequentially — Macro Setting

A macro is a command that activates and operates a series of electrical devices in sequential order. Use the procedure below to create up to five macros, each of which can perform up to ten operations.

- 1** Select Macro from the Setup menu.
The Macro Setting menu appears.
- 2** Click on one of the number buttons (1 to 5) to select the macro.
- 3** Click on one of the icons under Selection: to register it as one of the devices to be operated by the macro.
To find other icons, click on either the ▲ or ▼ button to the right of the screen.
The operation panel of the selected device appears.

- 4** Click on the operation button that you want to register.
The button is registered in the Macro, and the numbered space below lights up purple.

To specify a time lag between the execution of one operation and the execution of the next

Click in "sec" box, then enter the time in seconds on the keyboard.

- 5** Repeat steps 3 and 4 to register other items.

To delete a registered operation button or delay time

Click on the item you want to delete, then on Delete.

To delete a macro

Click on ALL Clear. All macros are deleted.

To name a macro

Click on the blank area to the right side of Macro List: , then enter the name of the macro on the keyboard.

To execute a macro

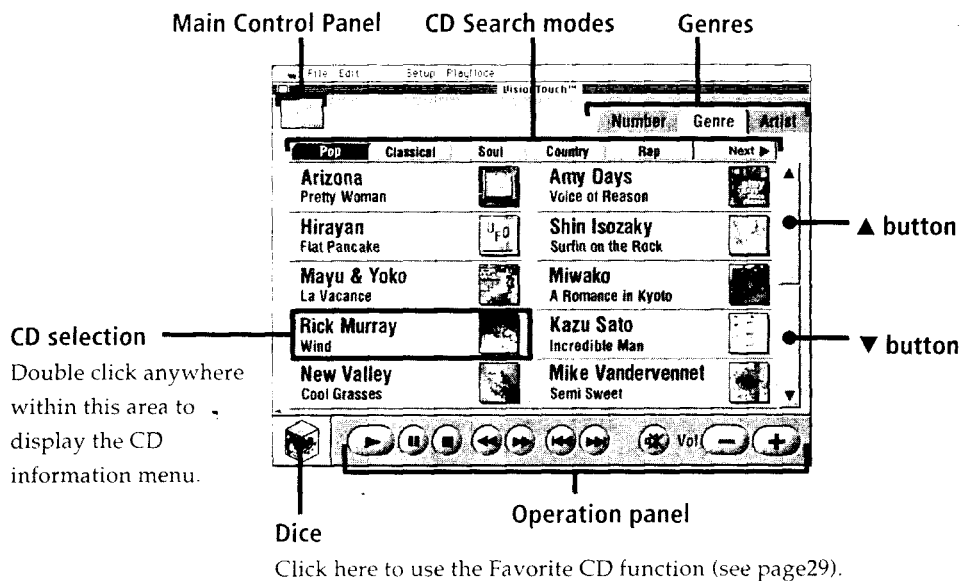
Click on the number of the macro to be executed in the Main Control Panel. To check the contents of a macro, move the pointer to the macro number.

CD Changer Operations

Playing a CD in the CD Changer

CD information of the CD changer stored in the computer appears on the screen. If you have input artist names and CD and track titles (see page 25), you can select CDs in three different ways: by number, genre, or artist. You can also enjoy viewing the background as it changes from day to night, and back again (according to the clock in your computer). Note that these CD changer functions can be used only with Sony CD changers.

CD list menu displayed by genre



Creating the Database

Before you can operate the CD Changer, you must first create a database containing, at the least, the titles of the CDs in the Changer.

Opening, closing, or creating a new database are done through the File menu while the CD list menu is displayed (The default name of any new database is "my_best.db"). Custom graphics to be read in as jacket data must be saved to individual files.

After creating a database, it can be placed into a specific directory through Preference... in the Setup menu.

When operating the CD changer for the first time

When you use the CD changer for the first time after creating the database, double click on the 100CD icon in the Main Control Panel to display the dialog box for saving data. Then click on Save. The CD list menu shown on page 24 appears. This operation is not necessary from the next time you use the CD changer.

Adding Text data

- 1 Double click on the CD selection for which the text data is to be added.
- 2 Select Data Input from the Setup menu while the CD information menu is displayed.

- 3 Click on the place where you want to enter information.

To specify the font, size, or style of characters

Highlight the item, then select the feature from the Text menu.

To select a genre change an assigned genre

Click on Genre to the left of the artist's name, then select the genre.

- 4 Enter letters on the keyboard. (The time format cannot be changed.)
Before returning to the Main Control Panel or the CD list menu, you must cancel the data input mode by clicking again on Data Input in the Setup menu to deselect it.

CD Changer Operations

If you click on	the screen shows
Number	the CDs in sequential order. To view other CDs, click on the number index above the list of CDs.
Genre	the CDs grouped according to genre. To view CDs in another genre, click on the genre index above the list of CDs.
Artist	the CDs according to artist name, listed in alphabetical order. To view CDs of other artists, click on the alphabetical index above the list of CDs.

To view more CDs, click on either the ▲ or ▼ button at the right side of the screen.

- 3 Single click on a CD selection to start playing the CD from the first track. Double click on the selection to display the CD information menu and start playing the CD at the same time.

To delete a CD from the database

You can delete CD information from the CD list menu without opening the database. Click on the CD you want to delete in the CD list menu to change the color to blue, then press the delete key on the keyboard.

Customizing genres

- 1 Select Genre Setup from the Setup menu while the CD information menu is displayed. The Genre Customize menu appears.
- 2 Click on the blank area to specify a new genre or change an existing genre.
- 3 Enter the genre name on the keyboard.

To delete all genres

Click on All Clear.

To restore the genre settings to their factory setting

Click on Standard.

Playing multiple CDs sequentially — Program Play

You can program up to 20 CDs for sequential playback. To program CDs, you must do the following procedure while the CD list menu is displayed on the screen.

- 1** Select Program Play from the Setup menu.
The Program Play menu appears.
- 2** Click on the CD you want to program from among the CDs in the CD list menu.
The next numbered space lights up blue.
- 3** Repeat step 2 to program more CDs.

To delete a programmed CD

Click on the CD selection to be deleted, then click on Delete.

To end the Programming process

Click on End.

To start Program Play

Select Program Play from the Play Mode menu, then click on play button.



You can drag and drop CD selections while creating a program

You can drag and drop programmed CD selections to change their order in the program.

Selecting Your Favorite CDs — Favorite CD

You can select six of your favorite CDs and play them randomly one at a time. To make your selections, do the following procedure while the CD list menu is displayed on the screen.

- 1** Select Favorite CD from the Setup menu.
The Favorite CD Selection menu appears.
- 2** Click on a CD from among those in the CD list menu to select it.
The next blank lights up blue.
- 3** Repeat step 2 to select more CDs.

To delete a selected CD

Click on the CD you want to delete, then on Delete.

To end the selection process

Click on End.

To play a favorite CD

Click on the dice in the CD list or CD information menu. The dice rolls and one of the selected CDs is played.

Troubleshooting Guide

If you experience any of the following difficulties while using the CAV-1/CAV-2, use this section as a guide to remedy the problem. Should the problem persist, consult your nearest Sony dealer.

The Air-EGG™ will not operate.

- ➔ The batteries are exhausted. Replace the batteries.
- ➔ The security settings of the interface box and Air-EGG are not the same. Change one or the other setting so that they are both the same (see page 15).

The pointer on the screen moves even when the Air-EGG is stationary.

- ➔ The Air-EGG has been subjected to a temperature change or shock. Rest the Air-EGG on a flat surface, then try using it again after a few seconds.
- ➔ The batteries are becoming weak.

The pointer moves awkwardly or does not move when you manipulate the Air-EGG.

- ➔ The reception sensitivity of the interface box is poor.
Verify the following:
 - There is no metal object near the interface box.
 - The Air-EGG is not too far from the interface box.

The IR code from a remote commander cannot be installed.

- ➔ The interface box is exposed to a strong light such as sun-light. Move the interface box away from the light source.
- ➔ The distance between the interface box and the remote commander is too far, or the commander is pointed in the wrong direction. Point the remote commander directly at the interface box from a distance of about 2~4 inches (5~10 cm) (see page 20).
- ➔ IR codes of certain manufactures cannot be perfectly installed even if "OK" has appeared.

The CD changer connected through CONTROL A or CONTROL A1 does not operate

- ➔ Without creating a database, you will not be able to operate the CD changer, even after locating a CD. You must enter at least the CD title in the CD information menu (see page 25).
- ➔ Make sure that the number in the CD changer in the CD information menu corresponds with the actual slot number. You should do this especially after changing CDs.

Specifications

Interface box inputs/outputs

RS232C serial connector (1)
Mouse connector (PS/2, ADB, PC-98)(CAV-10R only) (3)
IR output (1)
CONTROL A1(Mono Mini jack)(bi-directional) (1)
LANC (Stereo Mini jack)(bi-directional) (1)

Requirements

Macintosh computer:

System	System 7.1 or later
RAM	4 MB or more
Colors	256 or more

IBM-compatible PC computer:

System	Windows 3.1 or later
RAM	16 MB or more
(recommended)	
Colors	32768 or more

Optional accessories

- CONTROL A1 cable (Mono Mini cable)
- LANC cable (Stereo Mini-Mini cable)
- Macintosh (ADB) mouse cable (S-video cable)

Index

A

- Adding
 - graphics 26
 - new buttons 20
 - text data 25
- Air-EGG 6, 12
 - how to use 10
- Artist 28
- Automatic and Sequential start
 - of the program sources and electrical equipment *See* Macro Setting

B

- Batteries
 - inserting into the Air-EGG 9
 - Compartment 12

C

- CAV-1 6, 9
- CAV-2 6, 9
- CAV-10E 6, 9
- CAV-10R 6, 9, 13
- CD
 - changer 4, 6, 13, 24
 - information menu 27
 - list menu 24, 25
 - playing in the CD changer 24
 - search modes 24
 - selection 24
- CD-ROM 9, 15
 - installing 15
- Close box 21
- Connecting interface box
 - to your computer 14
 - to a VCR and Sony CD changer 14
 - AC adaptor 14
- CONTROL A1 cable 6, 31
- Creating the database 25

D, E

- Dice 24
- Down arrow 21

F

- Favorite CD 29

G

- Genre 24 - 28
 - customizing 28

H

- Hooking up the system 13

I, J, K

- Icons 21
 - changing 17
 - creating new-function 17
- Interface box 12
- IR code 6, 7
 - installing 18

L

- LANC cable 6, 31

M

- Macro Setting 4, 23
- Main Control Panel 16, 24, 27
- Major parts and their use 12
- Menu 21
- Mouse cable 6
- Musical note 27

N

- Number 24
 - in the CD changer 27

O

- Operating
 - configuration of the CAV-1 /CAV-2 6
 - electrical equipment 21
- Operation panel 21, 24

P, Q

- Precautions 8
- Preventing interference when using two or more Air-EGGs 15
- Program Play 28

R

- RF signal 6
- RS232C cable 6

S

- Selecting your favorite CDs
- See* Favorite CD
- Sequential playing of multiple CDs *See* Program Play
- Specifications 31
- Supplied items 9

T

- Title bar 21
- Track title 27
- Troubleshooting guide 30

U, V

- Unpacking 9
- Using the CAV-1/CAV-2 7

W, X, Y, Z

- Wireless mouse *See* Air-EGG

Names of controls

Buttons

- ▲, ▼ 24

Switch

- Security 4,15

Connectors

- ADB 4
- Mouse 13, 31
- PS/2 4
- RS232C 13, 31

Indicators

- Air-EGG battery 9, 12
- IR code 12
- Power 12

Jacks

- CONTROL A1 (Mono Mini) 13, 31
- LANC (Stereo Mini-Mini) 13, 31