



User's Guide

Version 1.0

SONY

Contents

1) Software License Agreement	2
2) Overview	
- Features	5
- Box Contents	6
3) Installation	
- What You Need	7
- Installing the PCI Card	8
- Connecting the Camera	11
- Installing the Software Drivers	15
- Installing the Software Application	16
- Configuring Windows 95 Sound Properties	19
4) Using Sony FunMail	
- Launching the Program	21
- Recording and Playback	24
- Using the Scrolling Text Bar	25
- Saving Your Message to Disk	26
- Sending Your Message Via Email	28
- The Player	30
5) Using Other Video Sources	
- Overview	32
- Installation Requirements	33
- Connecting a VCR	34
- Connecting a Video Camera	36
- Using Recorded Video With FunMail	39
Appendix	
A) FunMail Tips and Tricks	42
B) Download Chart	43
C) Troubleshooting	44
D) Technical Information	
- Declaration of FCC Compliance	52

Software License Agreement

END-USER LICENSE AGREEMENT FOR SONY SOFTWARE

IMPORTANT-READ CAREFULLY: This End-User License Agreement ("License") is a legal agreement between you and Sony Electronics Inc. ("SONY"), the manufacturer of your Sony Product ("Sony Product"). All Sony software and third-party software shall be referred herein as the Sony SOFTWARE. The Sony SOFTWARE includes computer software, associated media, any printed materials, and any "on-line" or electronic documentation. You may use the Sony SOFTWARE only in connection with the use of the Sony Product. By installing, copying or otherwise using the Sony SOFTWARE, you agree to be bound by the terms of this License. If you do not agree to the terms of this License, Sony is unwilling to license the Sony SOFTWARE to you. In such event, you may not use or copy the Sony SOFTWARE, and you should promptly contact Sony for instructions on return of the unused product(s) for a refund of the purchase price of the Sony Product allocable to the Sony SOFTWARE.

SONY SOFTWARE LICENSE

The Sony SOFTWARE is protected by copyright laws and international copyright treaties, as well as other intellectual property laws and treaties. The Sony SOFTWARE is licensed, not sold.

GRANT OF LICENSE. This license grants you the following rights:

- **Software.** You may install and use one copy of the Sony SOFTWARE on a single computer.
- **Storage/Network Use.** You may not use the Sony SOFTWARE over an internal network or distribute the Sony SOFTWARE to your other computers over an internal network.
- **Back-up Copy.** A back-up copy of the Sony SOFTWARE is included with the Sony Product. You may use the back-up copy solely for archival purposes.

DESCRIPTION OF OTHER RIGHTS AND LIMITATIONS

- **Limitation on Reverse Engineering, Decompilation and Disassembly.** You may not modify, reverse engineer, decompile, or disassemble the Sony SOFTWARE in whole or in part.
- **Separation of Components.** The Sony SOFTWARE is licensed as a single product. Its component parts may not be separated for use on more than one computer.
- **Single COMPUTER.** The Sony SOFTWARE is licensed for use on a single computer. The Sony SOFTWARE may only be used on a single computer at a time.
- **Rental.** You may not rent or lease the Sony SOFTWARE.
- **Software Transfer.** You may permanently transfer all of your rights under this License only as part of a sale or transfer of the Sony Product, provided you retain no copies, transfer all of the Sony SOFTWARE (including all copies, component parts, the media and printed materials, all versions and any upgrades of the Sony SOFTWARE and this License), and the recipient agrees to the terms of this License.
- **Termination.** Without prejudice to any other rights, Sony may terminate this License if you fail to comply with the terms and conditions of this License. In such event, you must destroy all copies of the Sony SOFTWARE and all of its component parts.

COPYRIGHT. All title and copyrights in and to the Sony SOFTWARE (including but not limited to any images, photographs, animation, video, audio, music, text and "applets", incorporated into the Sony SOFTWARE), and any copies of the Sony SOFTWARE, are owned by Sony or its suppliers. All rights not specifically granted under this License are reserved by Sony.

HIGH RISK ACTIVITIES. The Sony SOFTWARE is not fault-tolerant and is not designed, manufactured or intended for use or resale as on-line control equipment in hazardous environments requiring fail-safe performance, such as the operation of nuclear facilities, aircraft navigation or communication systems, air traffic control, direct life support machines, or weapons systems, in which the failure of the Sony SOFTWARE could lead directly to death, personal injury, or severe physical or environmental damage ("High Risk Activities"). Sony and its suppliers specifically disclaim any express or implied fitness for High Risk Activities.

Software License Agreement

PROHIBITION ON EXPORT. EXCEPT FOR EXPORT TO CANADA FOR USE IN CANADA BY CANADIAN CITIZENS, THE SONY SOFTWARE AND ANY UNDERLYING TECHNOLOGY MAY NOT BE EXPORTED OUTSIDE THE UNITED STATES OR TO ANY FOREIGN ENTITY OR "FOREIGN PERSON" AS DEFINED BY U.S. GOVERNMENT REGULATIONS, INCLUDING WITHOUT LIMITATION, ANYONE WHO IS NOT A CITIZEN, NATURAL OR LAWFUL PERMANENT RESIDENT OF THE UNITED STATES. BY DOWNLOADING OR USING THE SONY SOFTWARE, YOU ARE AGREEING TO THE FOREGOING AND YOU ARE WARRANTING THAT YOU ARE NOT A "FOREIGN PERSON" OR UNDER CONTROL OF A FOREIGN PERSON.

U.S. GOVERNMENT RESTRICTED RIGHTS. THE SOFTWARE PRODUCT and documentation are provided with RESTRICTED RIGHTS. Use, duplication, or disclosure by the United States Government is subject to restrictions as set forth in subparagraph (c)(1) and (2) of the Commercial Computer Software-Restricted Rights at 48 CFR 52.227-19, as applicable. Manufacturer is Sony Electronics Inc., One Sony Drive, Park Ridge, New Jersey 07656.

LIMITED WARRANTY

LIMITED WARRANTY ON CD-ROM MEDIA. Sony warrants that for a period of ninety (90) days from the date of its delivery to you the CD-ROM media on which the back-up copy of the Sony SOFTWARE is furnished to you will be free from defects in materials and workmanship under normal use. This limited warranty extends only to you as the original licensee. Sony's entire liability and your exclusive remedy will be replacement of the CD-ROM media (which is evidence that the CD-ROM media is within the warranty period). Sony will have no responsibility to replace a disk damaged by accident, abuse, or misapplication. ANY APPLIED WARRANTIES OF MERCHANTABILITY AND FITNESS FOR A PARTICULAR PURPOSE, ARE LIMITED IN DURATION TO NINETY (90) DAYS FROM THE DATE OF DELIVERY. SOME STATES DO NOT ALLOW LIMITATIONS ON HOW LONG AN IMPLIED WARRANTY LASTS, SO THESE LIMITATIONS MAY NOT APPLY TO YOU. THIS WARRANTY GIVES YOU SPECIFIC LEGAL RIGHTS, AND YOU MAY HAVE OTHER LEGAL RIGHTS WHICH VARY FROM STATE TO STATE.

EXCLUSION OF WARRANTY ON SONY SOFTWARE. You expressly acknowledge and agree that use of the Sony SOFTWARE is provided "AS-IS" and without warranty of any kind and Sony and Sony's LICENSORS (hereinafter, Sony and Sony's LICENSORS shall be collectively referred to as "SONY") EXPRESSLY DISCLAIM ALL WARRANTIES, EXPRESS OR IMPLIED, INCLUDING, BUT NOT LIMITED TO, THE IMPLIED WARRANTIES OF MERCHANTABILITY AND FITNESS FOR A PARTICULAR PURPOSE. SONY DOES NOT WARRANT THAT THE FUNCTIONS CONTAINED IN THE SONY SOFTWARE WILL MEET YOUR REQUIREMENTS, OR THAT THE OPERATION OF THE SONY SOFTWARE WILL BE CORRECTED. FURTHERMORE, SONY DOES NOT WARRANT OR MAKE ANY REPRESENTATIONS REGARDING THE USE OR THE RESULTS OR THE RESULTS OF THE USE OF THE SONY SOFTWARE IN TERMS OF ITS CORRECTNESS, ACCURACY, RELIABILITY, OR OTHERWISE. NO ORAL OR WRITTEN INFORMATION OR ADVICE GIVEN BY SONY OR A SONY REPRESENTATIVE SHALL CREATE A WARRANTY OR IN ANY WAY INCREASE THE SCOPE OF THIS WARRANTY. SHOULD THE SONY SOFTWARE PROVE DEFECTIVE, YOU (AND NOT SONY OR A SONY AUTHORIZED REPRESENTATIVE) ASSUME THE ENTIRE COST OF ALL NECESSARY SERVICING, REPAIR, OR CORRECTION. SOME JURISDICTIONS DO NOT ALLOW THE EXCLUSION OF IMPLIED WARRANTIES, SO THE ABOVE MAY NOT APPLY TO YOU.

Software License Agreement

LIMITATION OF LIABILITY

HEREINAFTER, SONY AND SONY'S LICENSORS SHALL BE COLLECTIVELY REFERRED TO AS "SONY". SONY SHALL NOT BE LIABLE FOR ANY INCIDENTAL OR CONSEQUENTIAL DAMAGES FOR BREACH OF ANY EXPRESS OR IMPLIED WARRANTY, BREACH OF CONTRACT, NEGLIGENCE, STRICT LIABILITY OR ANY OTHER LEGAL THEORY RELATED TO THIS PRODUCT. SUCH DAMAGES INCLUDE, BUT ARE NOT LIMITED TO, LOSS OF PROFIT, LOSS OF REVENUE, LOSS OF DATA, LOSS OF USE OF THE PRODUCT OR ANY ASSOCIATED EQUIPMENT, DOWN TIME AND PURCHASER'S TIME, EVEN IF SONY HAS BEEN ADVISED OF THE POSSIBILITY OF SUCH DAMAGES. IN ANY CASE, SONY'S ENTIRE LIABILITY UNDER ANY PROVISION OF THIS AGREEMENT SHALL BE LIMITED TO THE AMOUNT ACTUALLY PAID BY YOU ALLOCABLE TO THE SONY SOFTWARE. SOME STATES DO NOT ALLOW THE EXCLUSION OR LIMITATION OF CONSEQUENTIAL OR INCIDENTAL DAMAGES, SO THE ABOVE EXCLUSION OR LIMITATION MAY NOT APPLY TO YOU.

Should you have any questions concerning this license or this limited warranty, you may contact Sony by writing to Sony at Sony Technical Response Center, 12451 Gateway Boulevard, Ft. Myers, Florida 33913.

Overview

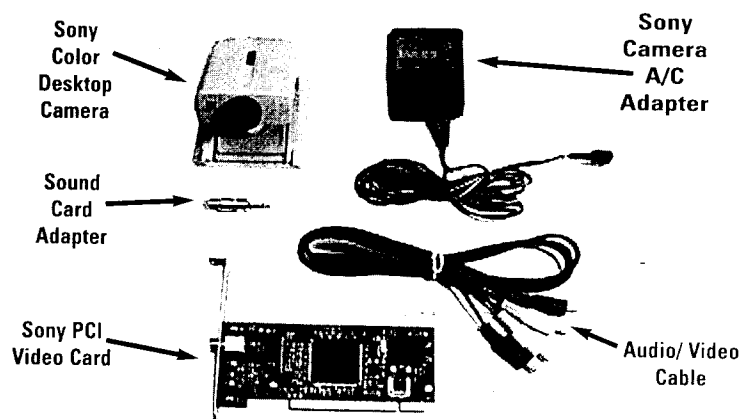
Features

- **Sony FunMail** comes complete with everything you need to start sending video email around the planet - there's nothing else to purchase! For a list of system requirements, please see page 7.
- **Sony FunMail** allows even the novice user to send audio/video email attachments around the world to friends and family.
- **Sony FunMail** is compatible with all email programs that accept attachments, including all **Microsoft®** mail programs, **Netscape Navigator®**, **Eudora®**, **Lotus CCMail®**, and most others.
- The person receiving a **Sony FunMail** message needs no extra software other than **Windows® 3.1**, **Windows 95**, or **Windows NT®** and an email account. A sound card and speakers are needed to hear the audio portion of the message.
- **Sony FunMail** creates an **executable** (also referred to as an **".exe"**) file. This is a normal application that can be launched from anywhere on your computer and copied or forwarded to others. With **FunMail** there are no fancy tricks to master - it's simple!

Overview

Box Contents

- FunMail Installation CD-ROM
- Sony PCI Video Card
- Sony Color Desktop Camera
- Sony Camera A/C Adapter
- Audio/Video Cable
- Sound Card Adapter
- Warranty/Registration Card
- FunMail User's Guide
- FunMail QuickStart Card



Installation

Getting Started

To install the **Sony FunMail Video Email System**, you need the following minimum requirements:

- **A Pentium® 66MHz Processor or Faster**
- **One Available PCI Slot**
- **One Available Interrupt Request Line (IRQ)**
- **Microsoft Windows® 95**
- **16 Megabytes of RAM or Greater**
- **640x480 Video with 256 Colors or Better**
- **A CD-ROM Drive**
- **10 Megabytes of Free Hard Drive Space**
- **A SoundBlaster® Compatible Sound Card**
- **Computer Speakers**
- **An Email Account and Email Software**
- **A Modem or Network Email Service**
- **The Contents of the Sony FunMail box**

NOTE: You may also need a Phillips or flat-blade screwdriver and a pair of pliers to remove the PCI slot cover.

Installation

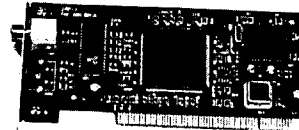
Installing the PCI Card

WARNING!

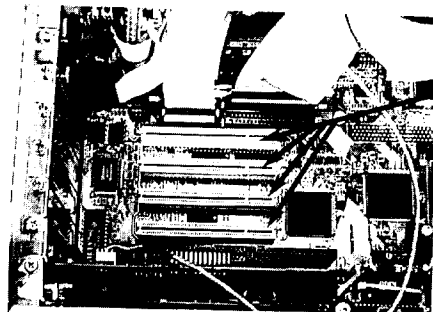
Static Electricity can damage this board! Before unplugging the computer from the wall, ground yourself by touching its metal back plates. Once you have done this, it is safe to remove the card from its protective bag.



The Sony PCI Video Card



- 1) Turn off your computer and unplug it from the wall. If you do not do this, **you could be injured.**
- 2) Remove and unplug any cables connected to the computer such as modems, printers, scanners, etc. These connections sometimes carry high voltages that could injure you. Make a list of where these cables are plugged into the computer to simplify reassembly.
- 3) Remove the cover on your computer. If you aren't sure how to do this, refer to the instructions that came with your computer.
- 4) Locate an empty **PCI slot** inside your computer. They are usually white and smaller than other slots. If you can't find an available PCI slot or aren't sure what a PCI slot looks like, check your **PC's User's Guide** for help.



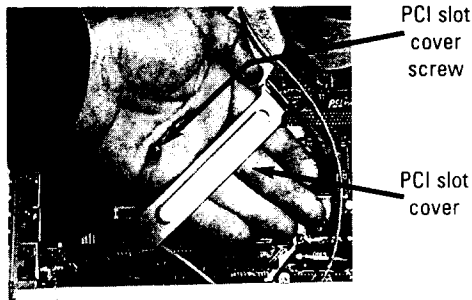
PCI slots

Installation

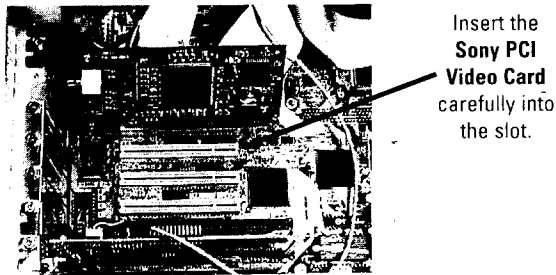
Installing the PCI Card - Continued

- 5) Remove the PCI slot cover using a screwdriver. Save these parts as you will need the screw to secure the **Sony PCI Video Card**, and you might need the PCI cover in the future.

NOTE: Some computers, such as the **Sony VAIO® series** and **HP Pavilion™ series**, have "punch out" slot covers instead of screw-attached covers. Use a screwdriver or pliers to remove this type of cover. **Be careful** - the edges of the covers are sometimes sharp.

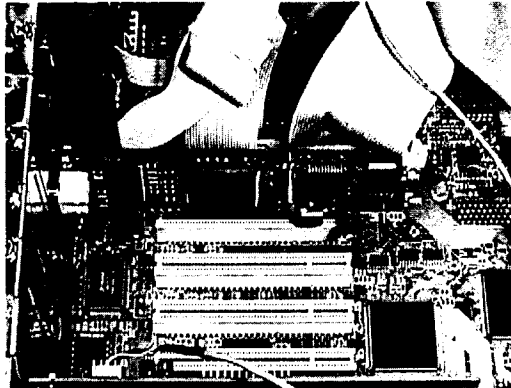


- 6) Gently insert the **Sony PCI Video Card** into the slot. Press down using firm pressure until you hear a click as the board seats itself. **Don't force it!** If the card doesn't seem to be going in easily, remove it and try again. Check to make sure the card is evenly seated in the slot, then use the screw from the PCI cover to secure the board to the computer.



Installation

Installing the PCI Card - Continued



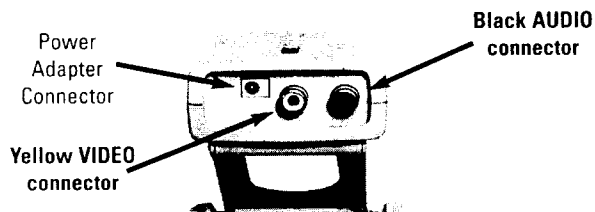
The **Sony PCI Video Card** will look like this when properly installed and secured with the screw.

- 7) When you are certain that the **Sony PCI Video Card** has been installed properly, replace the computer cover according to your PC's **User's Guide**.
- 8) Go on to the next section, *"Connecting the Camera"*.

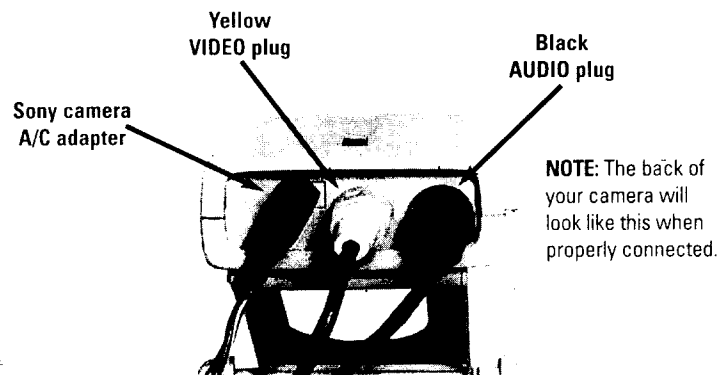
Installation

Connecting the Camera

- 1) On the back of the Sony camera, locate the **yellow VIDEO** connector and the **black AUDIO** connector.



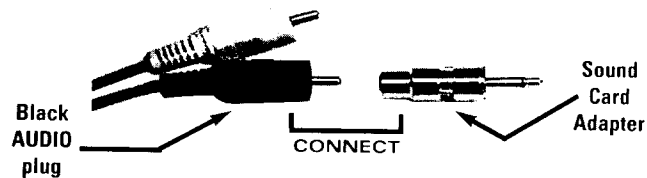
- 2) Locate the Audio/Video Cable included in the FunMail carton. Notice that there are two plugs on each end, one yellow and one black. Connect the yellow plug to the yellow **VIDEO** connector on the back of the camera, then connect the black plug to the black **AUDIO** connector on the back of the camera.
- 3) Locate the Sony Camera A/C Adapter included in the FunMail carton. Plug the black and yellow tip into the yellow power socket on the back of the camera labeled **DC IN 4.5v**.



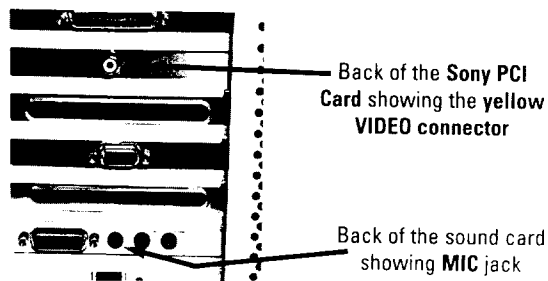
Installation

Connecting the Camera - Continued

- 4) Locate the **Sound Card Adapter** from the **FunMail box**. Find the ends of the **Audio/Video Cable** **NOT** connected to the back of the camera and plug the **Sound Card Adapter** into the **black** connector as shown below.



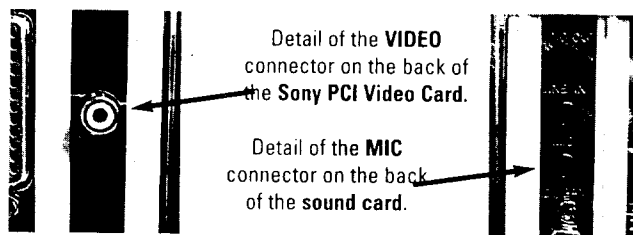
- 5) On the back of your computer, locate the **yellow VIDEO** connector on the **Sony PCI Video Card**. Insert the **yellow plug** on the **Audio/Video Cable** into the **yellow VIDEO** connector.



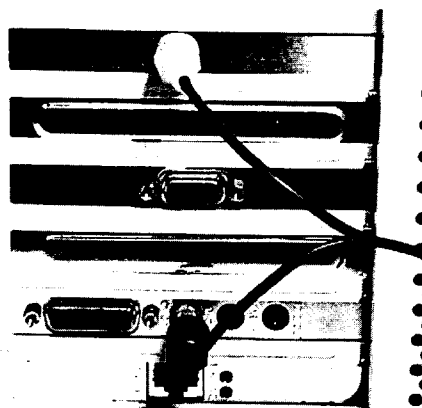
Installation

Connecting the Camera - Continued

- 6) Locate the sound card connections on the back of your computer. Locate the **Microphone** jack (usually labeled "**MIC**"). Insert the **black** plug on the **Audio/Video Cable** (with the **Sound Card Adapter** attached) into this jack.



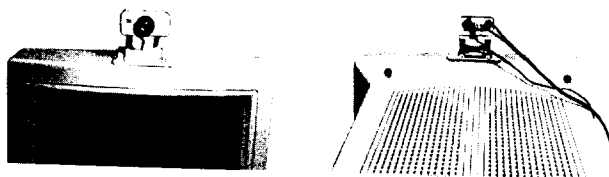
- 7) If you have connected the cables properly, the back of your computer should look very similar to the example below.



Installation

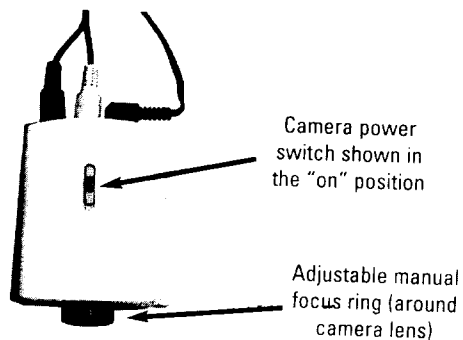
Connecting the Camera - Continued

- 8) Position the camera on top of your computer monitor as shown below. For optimal recording, position the camera even with your eye level.



Front and rear views of the proper camera position.

- 9) Plug the **Camera A/C Adapter** into a wall outlet or power strip. Reconnect the rest of the cables to your computer, and plug it back into the wall.
- 10) Turn on the camera's power switch. This is a small grey sliding switch located on the top of the camera. When the switch is in the proper position, a green dot will appear.



- 11) Installation of all hardware components is complete. Go on to the next section, ***"Installing the Software Drivers"***.

Installation

Installing the Software Drivers

- 1) Once you have successfully installed the **Sony PCI Video Card** and connected the camera, plug your computer back into the wall and turn it on.
- 2) Windows will boot and a dialog box will appear stating: **"New Hardware Found: PCI Multimedia Video Device. Windows has found new hardware and is locating the software for it."**
- 3) Insert the **Sony FunMail Installation CD-ROM** into your CD-ROM drive. Windows will locate the PCI card drivers on the CD-ROM and a new dialog box will appear that reads: **"New Hardware Found: Sony PCI Video Device. Windows is installing the software for your new hardware"**.
- 4) At this point, Windows will either continue to boot normally or ask you to restart your computer. Restart if necessary, then go on to the next section: ***"Installing the Software Application"***.

Note: If your computer does not recognize the **Sony PCI Video Card** please turn to ***"Appendix C: Troubleshooting"***.

Installation

Installing the Software Application

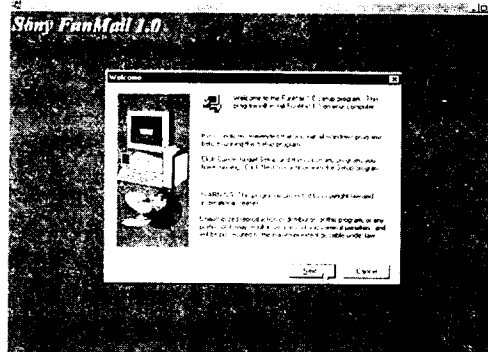
- 1) After your computer has finished booting, make sure the **FunMail Installation CD-ROM** is still in the CD-ROM drive. Go to the **START** menu and select **RUN**.
- 2) At the prompt, type "**D:SETUP.EXE**"* and press **RETURN**. This starts the Sony FunMail installation utility application.
- 3) The installation utility will check your computer for proper software components and adequate disk space. A progress meter will be displayed during this operation.

* If your computer's CD-ROM drive letter is different than "**D**", use that drive letter instead.

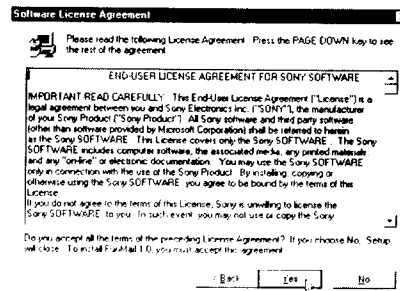
Installation

Installing the Software Application - Continued

- 4) Read the information about the Setup Utility and press **NEXT**.



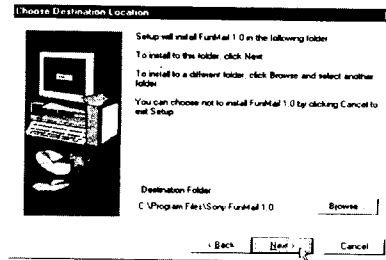
- 5) The program will ask you to read and accept or decline the **Software License Agreement**. This agreement is reproduced in the front of this manual for your convenience. You may **NOT** skip this step of the installation - you must accept the agreement to continue installing Sony FunMail.



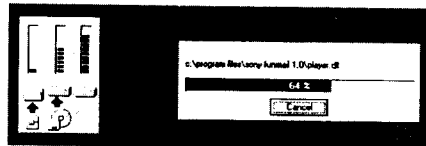
Installation

Installing the Software Application - Continued

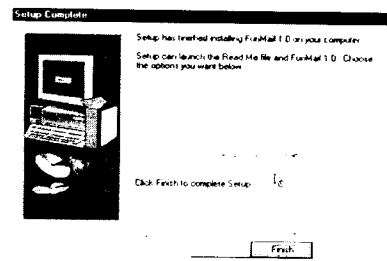
- 6) Setup will now ask you to choose a destination folder for the Sony FunMail application. The default folder is **C:\Program Files\Sony FunMail 1.0**. To install to a different folder, click **Browse** and select another folder. To use the default, click **NEXT**.



- 7) Setup will now copy all of the files needed to complete the installation of the Sony FunMail application. You will see a status bar on your screen like the one shown below.



- 8) When Setup has successfully installed all of the necessary components, you will be asked to complete the installation by clicking the **FINISH** button. After you do so you will be returned to the standard Windows interface. Go on to the next section: ***“Configuring Windows 95 Sound Properties”***.



Installation

Configuring Windows 95 Sound Properties

The microphone contained within the Sony Desktop Camera is of very high quality, and therefore very sensitive. You will most likely need to optimize your computer's audio settings before you run the Sony FunMail application.

- 1) Double-click the speaker-shaped icon in the lower right-hand corner of the **Windows 95 Task Bar**. This is the shortcut to the **Windows 95 Sound Properties Control Panel**.*
- 2) A Mixer window will appear showing the playback volume controls for all sources of audio on your computer. Make sure that the **Mute** box underneath the **Microphone Slider** is checked. This ensures that anything being heard by the camera's microphone is not being played back directly through the speakers, causing a humming or shrill screech (commonly referred to as "feedback").
- 3) The next step is to set the Microphone's recording level. Under the Volume Control **Options** pull-down menu, click on **Properties**.

* If you don't see this icon on your taskbar, click on the Windows 95 **START** button, click on **PROGRAMS**, then **ACCESSORIES**, click on **MULTIMEDIA**, and finally **VOLUME CONTROL**.

Installation

Configuring Windows 95 Sound Properties - Continued

- 4) Under the **Properties** Menu, change the **Adjust Volume For...** setting to **Recording** and click **OK**.
- 5) A new Mixer window will appear. Make sure the **Select** box under the **Microphone Slider** is checked, and use the **Microphone Slider** to adjust the sensitivity of the camera microphone.
- 6) You have finished configuring your computer's audio settings. Close the Mixer window and go on to the next section, ***"Using FunMail"***.

NOTE: When you use the FunMail application for the first time, you may notice that the recorded audio is either too soft, too loud, or distorted. Use **Step 5** above to fine-tune the recording level to the proper volume.

Using FunMail

Launching the Program

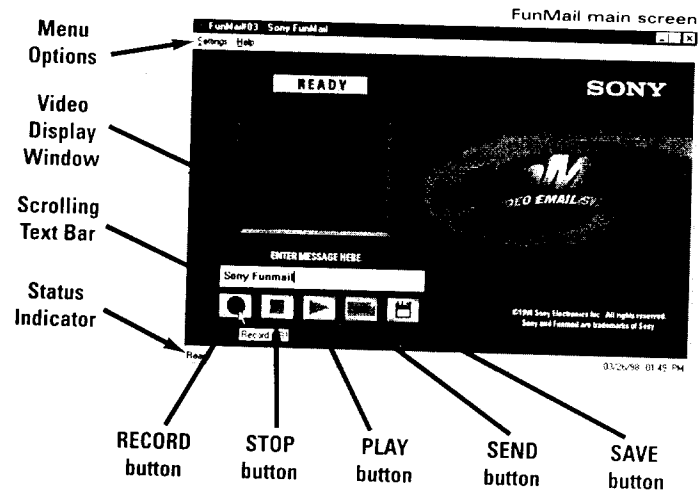
- 1) Click on the **START** button in Windows 95. Under the **Programs** listing you will find a sublisting for **Sony Funmail**. Click on the program named **FunMail**.
- 2) When FunMail launches you will be greeted by this image:



Using FunMail

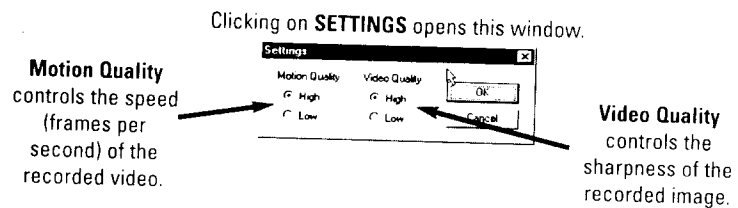
Launching the Program - Continued

- 3) When the program has finished loading, you will be presented with the main screen of the FunMail Video Email application.



Main Screen Features:

- **MENU OPTIONS:** there are two headings, **Settings** and **Help**. Under **Settings** you will find the video quality controls. Using the lower quality settings results in a slower frame rate and less sharpness in the video image; the benefits are smaller file sizes and shorter download times. The indexed help files are located under the **Help** heading.



Note: If you receive an error after launching the FunMail application, refer to **Appendix C: Troubleshooting**.

Using FunMail

Launching the Program - Continued

Main Screen Features - Continued

- **VIDEO DISPLAY WINDOW:** this is where the video signal from the camera is viewed during recording, and also where the recorded video is displayed during playback.
 - **TEXT BAR:** a custom text message up to 64 characters in length can be entered here. The default message is: "**Sony FunMail**", but you can change it to whatever you like.
 - **STATUS INDICATOR:** displays the current mode of operation (i.e., recording, ready, etc.).
 - **RECORD BUTTON:** initiates the record process, where audio and video are captured to your computer's hard disk drive.
 - **PLAY BUTTON:** active only after video and audio has been recorded, this button plays back the recorded audio/video clip.
 - **STOP BUTTON:** stops the current activity.
 - **SEND BUTTON:** compresses the current audio/video clip and attaches it to a new email message automatically.
 - **SAVE BUTTON:** compresses the current audio/video clip and saves it to a user-specified location in the computer's storage devices.
- 4) Now that you have launched the program and have a basic understanding of the main functions, go on to the next section, "**Recording and Playback**".

Using FunMail

Recording and Playing

- 1) In the video window you should see a real-time image of yourself (or whatever the camera is pointed towards). If you do not see an image or have a blank screen, turn to **"Appendix C - Troubleshooting"**.

RECORDING

← The word **RECORDING** will appear over the Video Window in red while FunMail is recording your audio/video clip.

- 2) To record a new audio/video clip, press the **RECORD** button and speak your message. The **RECORD** function is duplicated on your computer's keyboard by simultaneously pressing **CONTROL and R**.



RECORD
button

- 3) To stop the recording process you can do one of the following:



STOP
button

- click the left mouse button
- press **ESC** on your computer's keyboard, or
- press the square **STOP** button.

- 4) Once you have stopped recording you can play back your new audio/video clip by pressing the triangular **PLAY** button (it will become active when a clip has been recorded). If you are not satisfied with your clip, simply return to step 1 above and record again.



PLAY
button

- 5) Once you have created an audio/video clip that you are satisfied with, please move on to the next section, **"Using the Scrolling Text Bar"**.

Using FunMail

Using the Scrolling Text Bar

- 1) Now that you have recorded an audio/video clip, you have the option of entering your own personal text message into the **Scroll Bar**. This message can be **up to 64 characters** (letters, numbers, spaces, etc) in length, and consist of any subject you choose. Popular uses of the Scroll Bar include:

- Phone Numbers
- Email Addresses
- World Wide Web Addresses
- Special Offers to Clients
- Company Slogan or Motto

Please feel free to type whatever you want. The default message is:

"Sony FunMail"

- 2) To add or remove a message from the scroll bar, place the arrow cursor at the end of the message, click the left mouse button, and press the **DELETE** or **BACKSPACE** keys until the old message is gone. Now type your new message.



- 3) At this point, you have:

- Created your very own audio/video clip, and
- Entered your own unique text message.

Please turn to the next section, **"Saving Your Message to Disk"**.

Saving Your Message to Disk

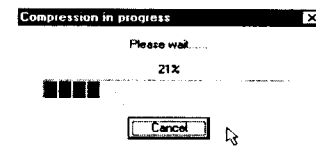
1) This section explains how to save your new FunMail message to a location that you specify on your computer's hard drive. Reasons you might want to save your message to disk include:

- Transfer to another computer
- Give to a friend who doesn't have email
- Your email software is not MAPI compliant (see next section)
- Saving for future use
- Posting to a web site, or
- Manually attaching to an email message.



SAVE
button

2) To save your message to disk, click on the floppy disk-shaped **SAVE** button. This begins the compression process in which your audio/video clip becomes a **FunMail Video Email** message.



3) Once compression is complete, you will see the standard Windows 95 **Save As** dialog. This is used to tell FunMail where on your computer you would like to save the new message, and what you would like to name it.

Using FunMail

Saving Your Message to Disk - Continued

- 4) In the **Save In** pull-down menu, you can select the location where your message will be saved.
- 5) In the **File Name** box you can rename your file whatever you want. The default name is "**FunMail-xx**", with the "**xx**" equaling the number of FunMail messages that have been created on your machine.
- 6) The saved message is exactly like any other file on your computer; it can be copied, moved, renamed, deleted, etc.
- 7) Now that you have created and saved your first FunMail Video Email message, please turn to the next section, "***Sending Your Message Via Email***".

Using FunMail

Sending Your Message Via Email



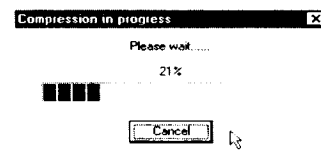
SEND
button

- 1) The **SEND** function automates the compression, saving, and email attachment functions using a protocol called **MAPI**. Many of today's popular email programs support this feature, including:

- Eudora®
- Lotus cc:mail®
- Microsoft Outlook™
- Microsoft Exchange™
- Microsoft Internet Explorer™
- Netscape Communicator™
- ...and many others

Note: If you aren't sure if your email package supports MAPI or to find out how to configure your email package, consult the documents that came with your software, or contact the email software manufacturer.

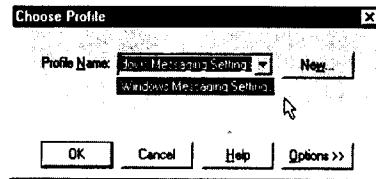
- 2) Once you have verified that your email package is **MAPI-compliant**, click on the envelope-shaped **SEND** button. This initiates the compression process which turns your audio/video clip into a FunMail Video Email Message, **without** having to use the normal **SAVE** procedure discussed in the last section.



Using FunMail

Sending Your Message Via Email - Continued

- 3) After compression, the first time you use the **SEND** feature, FunMail will ask you which **Internet Profile** you would like to use. FunMail needs this information so it can properly route and attach your message to a new email document. **NOTE:** Most users only have one profile.



- 4) Once you have entered a profile, FunMail will launch your default email application, open a new email document, and attach your FunMail Video Email message automatically. All you need to do is address it, add any typed messages you want (just like normal email), and send it off.
- 5) If your email software is **not** MAPI-compliant, follow the instructions in the last section, ***"Saving Your Message to Disk"***.
- 6) Once you have saved your message to a location on your hard drive, manually launch your email program and open a new email document.
- 7) Locate the FunMail message you just saved and attach it according to your email software's instructions.
- 8) Address your email document, add any typed comments, and send it off.

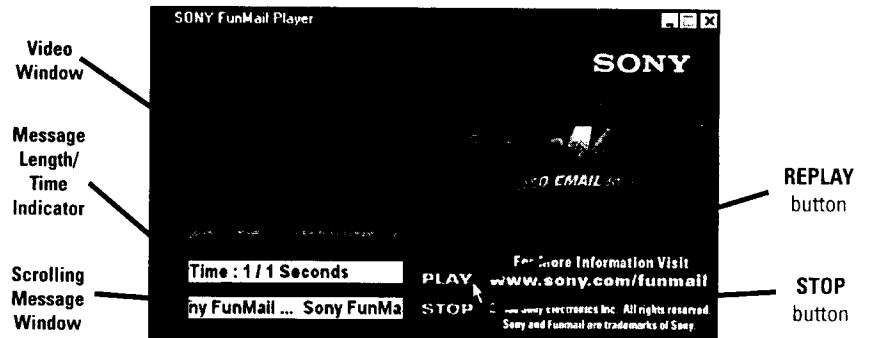
Congratulations!

You have created, saved, and sent your very first FunMail message. Turn to the next section, *"The Player"*, to see how easy it is to receive and play FunMail messages.

Using FunMail

The Player

The FunMail Video Email Player:



The FunMail Player is a stand-alone executable (or "exe") application that requires no special software or hardware to view. In fact, the FunMail player was designed for playback on the widest range of Windows operating systems, including:

- Windows 3.1 or later
- Windows for Workgroups
- Windows 95
- Windows NT 3.5 or later
- Windows NT 4.0

The **minimum requirements** needed to receive and play back a FunMail message are:

- 486DX-66 CPU or better
- 8 MegaBytes of RAM
- One of the operating systems listed above
- An email account
- A modem or network email service
- A sound card and speakers (to hear the audio portion)

For smoother playback it is **recommended** that the recipient's computer have a **Pentium 66mHz CPU** or faster and **16 MegaBytes** or more. Performance will vary by operating system, RAM, and processor speed.

Using FunMail

The Player - Continued

- 1) Locate your saved FunMail message. Double-click the **FunMail** icon to launch the player.



- 2) When the player launches, the audio/video clip will start automatically, and the **Scrolling Text Window** will display your text message.

PLAY

REPLAY
button

STOP

STOP
button

- 3) The Message may be replayed by clicking on the **PLAY** button to the right of the **Scrolling Text Window** or halted during playback by clicking on the **STOP** button. You may exit the player by clicking the **X** in the upper right hand corner of the window.



NOTE: You must first quit the FunMail Application (recorder) before playing back a FunMail message on the same machine or you will not hear the audio portion of the message. You may also receive error messages or experience poor performance. This is due to a Windows limitation of allowing only one device to access the sound card at a time.

NOTE: In some cases the colors on the "front panel" of the FunMail player may vary between different computers. This is due differences in the color palette settings on various computers. The color of the video will remain consistent between computers. To change your color palette, refer to the Windows online documentation or printed Windows User's Guide (included with your computer or operating system software).

You have finished installing and are learning to operate the FunMail Video Email System. If there are any items you are not yet certain of, please feel free to reread this guide when necessary. Detailed support can be found in the appendices of this guide, or in the on-line manual.

Using Other Video Sources

Overview

The **Sony PCI Video Card** is capable of recording video into the FunMail application from any **composite analog video source**, including:

- **Video Cassette Recorders (VCRs)**
- **Video cameras**
- **LaserDisc Players**
- **DVD Players**
- **Desktop Cameras**

This feature allows you to use your pre-recorded videos as the source for your FunMail messages. Some examples are:

- **Home Movies**
- **Children's Sports Events**
- **Advertising Your Products**
- **Corporate Events**
- **Many Others**

It is very easy to connect and record from other video sources once you have installed the **Sony PCI Video Card, drivers, and the FunMail Application Software** contained on the **FunMail Installation CD-ROM**. If you have not done so, please turn to **Chapter 3 - Installation** before continuing.

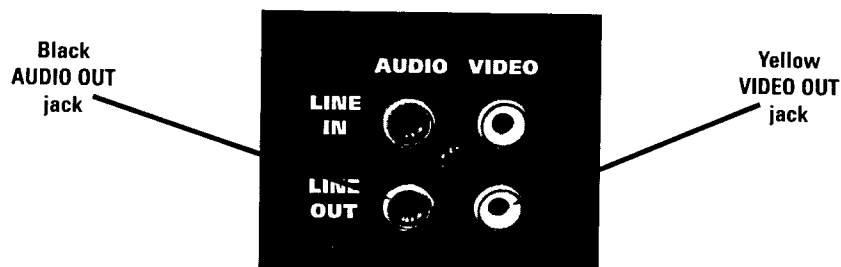
If you have correctly installed and familiarized yourself with the FunMail Video Email System, turn to the next section: ***"Installation Requirements"***.

Note: Before copying or recording anything into FunMail, make sure you are not using copyright-protected material in your messages - it may be illegal!

Using Other Video Sources

Installation Requirements

- 1) To connect to the **Sony PCI Video Card**, your video equipment **MUST** have a **composite analog video output jack**. The jack will look very similar to the **yellow VIDEO** jack found on the back of the **Sony Desktop Camera** included in the **FunMail** carton. An example is illustrated below:

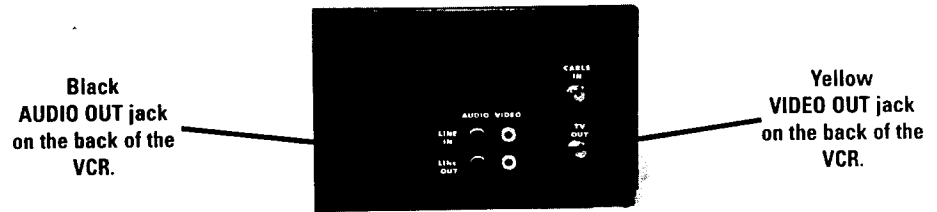


- 2) To enable audio recording, your video equipment must also have an **audio output connector**. This connector will look very similar to the **black AUDIO** jack on the back of the **Sony Desktop Camera** included in the **FunMail** carton. See above for details.
- 3) While there are many different video sources that can connect to the **Sony PCI Video Card**, this section will cover the two most common devices: A standard **Video Cassette Recorder (VCR)** and a **hand-held Video Camera**. To get started, go to the next section, **"Connecting a VCR"**.

Using Other Video Sources

Connecting a VCR

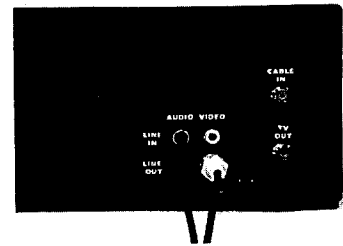
- 1) To connect a **VCR** to the **Sony PCI Video Card**, locate the **yellow VIDEO OUT** jack and the **black AUDIO OUT** jack on the back panel. If you have trouble locating these connectors, refer to your VCR's **User's Guide**.



- 2) Locate the **Audio/Video Cable** included in the FunMail carton. Connect the **yellow VIDEO** plug to the **yellow VIDEO OUT** jack on the back of the VCR. Connect the **black AUDIO** plug to the **black AUDIO OUT** jack on the back of the VCR.

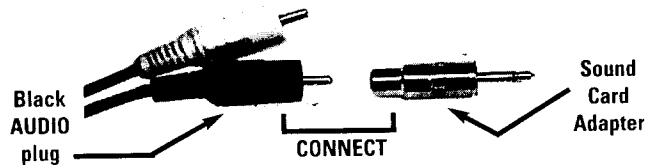


Yellow VIDEO cable connected to the VIDEO OUT connector on the back of the VCR



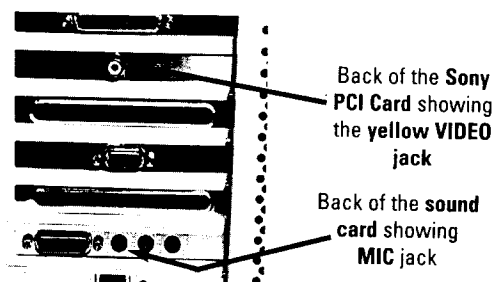
AUDIO and VIDEO cables properly connected to the jacks on the back of the VCR.

- 3) On the other end of the **Audio/Video Cable**, connect the **Sound Card Adapter** (included in the **FunMail** carton) to the **black AUDIO** plug.

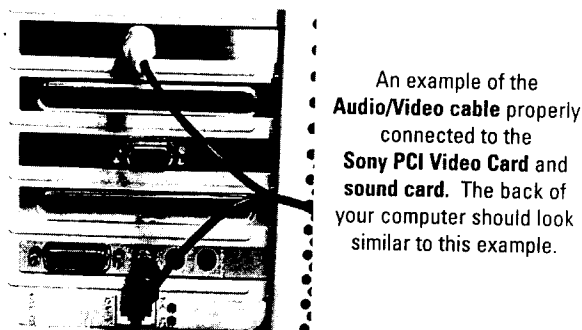


Using Other Video Sources

Connecting a VCR - Continued



- 4) Connect the **yellow VIDEO plug** to the **yellow VIDEO jack** on the **Sony PCI Video Card**. Connect the **black AUDIO plug** (with the **Sound Card Adapter** attached) to the **MIC jack** on your computer's **sound card**.



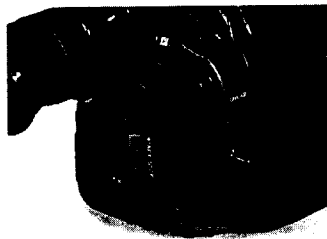
- 5) Your VCR is now properly connected to your computer. To get started making FunMail messages with video from your VCR, skip over the next section and turn to Page 40, **"Using Recorded Video With FunMail"**.

NOTE: If you have **monaural (mono)** audio capabilities on your VCR you will see one **AUDIO OUT** jack, which is usually **white or black** in color. If you have a **stereo or Hi-Fi stereo** VCR, you will see a pair of **AUDIO OUT** jacks; one **white (Left Audio Out)** and one **red (Right Audio Out)**. Connect the **audio cable** included in the FunMail carton to the **Left (Mono) Audio Out jack**, as most sound cards can only record a mono signal. If your sound card can record a stereo signal and you would like to record the left and right channels from your VCR, you will need a stereo cable not included in the FunMail carton. Check with your favorite electronic or computer components dealer for further information.

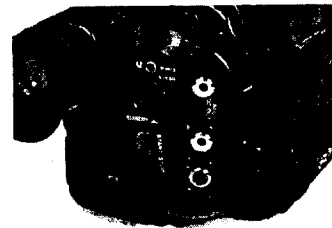
Using Other Video Sources

Connecting a Video Camera

- 1) To connect a **Video Camera** to the **Sony PCI Video Card**, locate the **yellow VIDEO OUT** jack and the **AUDIO OUT** jacks on the Video Camera. On some Cameras, the **audio/video connections** may be hidden under a protective cover. If you have trouble locating these connectors, refer to your Video Camera's **User's Guide**.

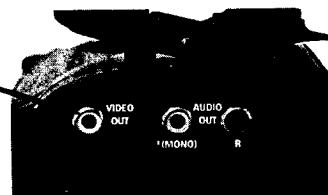


The back of a Video Camera showing the protective cover in place. The **audio/video connections** are underneath this cover.



The back of a Video Camera showing the protective cover removed and the **audio/video connections** exposed.

Yellow
VIDEO OUT
jack

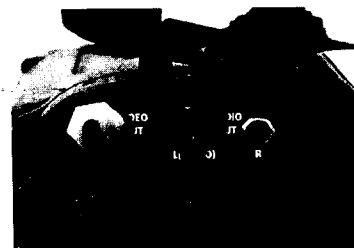


AUDIO OUT jacks.
Use the **L(MONO)**
jack when
connecting the
Audio/Video cable.

- 2) Locate the **Audio/Video Cable** included in the FunMail carton. Connect the **yellow VIDEO plug** to the **yellow VIDEO OUT jack** on the Video Camera. Connect the **black AUDIO plug** to the **L(MONO) AUDIO OUT jack** on the Video Camera.



Yellow **VIDEO** cable connected to the **VIDEO OUT** connector on the Video Camera.

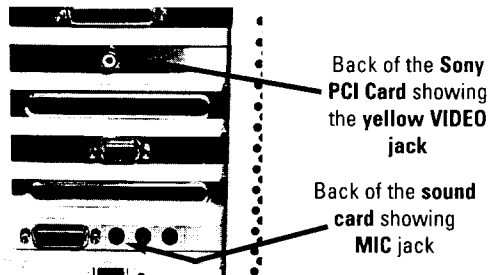
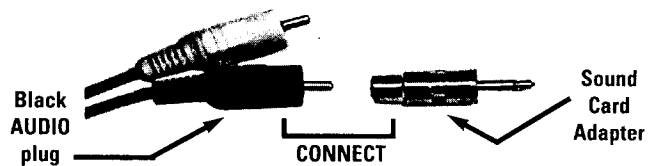


AUDIO and **VIDEO** cables properly connected to the jacks on the Video Camera.

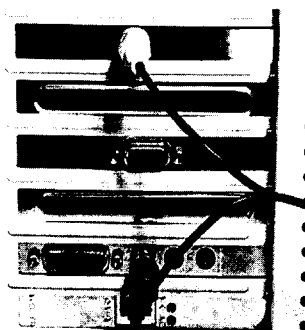
Using Other Video Sources

Connecting a Video Camera - Continued

- 3) On the other end of the **Audio/Video Cable**, connect the **Sound Card Adapter** (included in the FunMail carton) to the **black AUDIO plug**.



- 4) Connect the **yellow VIDEO plug** to the **yellow VIDEO jack** on the **Sony PCI Video Card**. Connect the **black AUDIO plug** (with the **Sound Card Adapter** attached) to the **MIC jack** on your computer's **sound card**.



An example of the **Audio/Video cable** properly connected to the **Sony PCI Video Card** and **sound card**. The back of your computer should look similar to this example.

Using Other Video Sources

Connecting a Video Camera - Continued

- 5) Your Video Camera is now properly connected to your computer. To get started making FunMail messages with video from your Video Camera, go to the next section, ***"Using Recorded Video With FunMail"***.

NOTE: If you have **monaural (mono)** audio capabilities on your Video Camera you will see one **AUDIO OUT** jack, which is usually **white or black** in color. If you have a **stereo or Hi-Fi stereo** Video Camera, you will see a pair of **AUDIO OUT** jacks; one **white Left Audio Out or Left (MONO) jack** and one red **Right Audio Out jack**. Connect the **black plug** of the **Audio/Video Cable** included in the FunMail carton to the **Left (Mono) Audio Out jack**, as most sound cards can only record a mono signal. If your sound card can record a stereo signal and you would like to record the left and right channels from your Video Camera, you will need a stereo cable not included in the FunMail carton. Check with your favorite electronic or computer components dealer for further information.

Using Other Video Sources

Using Recorded Video With FunMail

This section explains how to use recorded video from your **VCR or Video Camera** as the content for **FunMail Video Email** messages. If you followed the steps in the last two sections correctly, your VCR or Video Camera should be properly connected.

- 1) Launch the **Sony FunMail** application in **Windows 95**.
- 2) Make sure your VCR or Video Camera's power is turned **ON**.
- 3) Insert the tape containing the video you would like to use into the VCR or Video Camera.
- 4) If you are using a Video Camera, make sure it is set to **PLAYBACK, VTR, or VCR mode**.

NOTE: The **FunMail Video Window** will show whatever default image your VCR or Camcorder displays (most have a black or blue blank screens).

Using Other Video Sources

Using Recorded Video With FunMail - Continued



- 5) Use the **Transport Controls (Play, Rewind, Fast Forward, etc.)** on your VCR or Video Camera to advance the tape to the footage you would like to record into FunMail.



Common Video Camera Transport Controls.



Common VCR Transport Controls.

- 6) Press the **PAUSE** button on the VCR or Video Camera when you reach the footage you want to record.
- 7) When you are ready, press the **PLAY** button on your VCR or Video Camera, then click the **RECORD** button in the FunMail application.

APPENDIX A

FunMail Tips and Tricks

This section offers some useful tips and suggestions to help maximize your enjoyment of the Sony FunMail Video Email System.



TIP

Keep your messages to the point. Video Email is similar in concept to traditional Voice Mail systems. Remember, you can still type details into the body of the email you're sending.



TIP

Shorter messages are better. If you are using a modem, you might want to limit your messages to under 60 seconds, as this gives you a reasonably small file size and shorter download/upload times.



TIP

Avoid Background Window Lighting. The Sony Camera is very sensitive to lighting conditions. Use a light source in front of you (shining on your face) to get the best results.



TRICK

Look into the camera. If you stare at the screen while recording, it seems like you aren't making eye contact with the person receiving the message.



TRICK

Use the keyboard shortcuts. By using the keyboard rather than the mouse to start and stop recording, you can avoid looking away from the camera. **See page 24 or the online help guide for shortcuts.**



TRICK

Be Animated! Remember, you are on camera, not typing plain-old email messages. Pretend the recipient of the message is right in front of you. Smile, wave, and have a good time!

Using Other Video Sources

Using Recorded Video With FunMail - Continued

- 8) The **RECORDING** indicator will appear while FunMail is recording.

RECORDING

Recording Indicator

- 9) When you have reached the end of the footage you wanted to record, click the **STOP** button in the FunMail Application, then press **STOP** on your VCR or Video Camera.
- 10) To review what you have recorded, click the **PLAY** button in the FunMail application. **NOTE:** For further information regarding the FunMail controls, turn to page 24, *"Recording and Playing"*.
- 11) If you are not happy with what you have recorded simply **repeat steps 5 through 10 above**.
- 12) Once you have created a message you are satisfied with, you can send it via email or save it to disk. See page 26, *"Saving Your Message to Disk"*, or *"Sending Your Message Via Email"* on page 28.

APPENDIX B

Download Chart

Message Length	Average Size	Modem Upload/Download Times (in seconds)					
		14.4K	28.8K	33.6K	56K	ISDN 128K	T1 1.54Mbps
5 Seconds	180K	114	60	51	38	17	1.4
10 Seconds	220K	148	76	65	45	21	1.7
20 Seconds	290K	205	107	92	67	30	2.5
30 Seconds	360K	258	136	117	85	38	3.2
45 Seconds	470K	304	169	145	113	54	4.5
60 Seconds	630K	421	216	185	135	64	5.4

NOTE: This chart is designed to give a basic outline of the average transmission times based on message length, file size, and modem speed. The test messages were recorded with the **Motion Quality** and **Video Quality** options set to **HIGH**. You may experience slight fluctuations in file size due to differences in message content.

The test systems used in the creation of this chart were all Pentium-Class Windows 95 computers using Dial Up Networking to connect to a commercial Internet Service Provider over standard phone lines (except the **ISDN** and **T1** tests). Your upload/download times may vary depending on your computer, the quality of your modem connection, and the speed of your Internet Service Provider.

APPENDIX C

Troubleshooting - Continued

There is a humming sound coming from my speakers when I turn up the volume or speak into the camera's microphone.

Your microphone is playing directly through your speakers causing "feedback". For further help, turn to "*Configuring Windows 95 Sound Properties*" in this manual.

When I play back a message I have compressed, the audio and video are not synchronized completely.

On some computers, Windows Power Management causes interruptions in system operations and can affect the performance of the FunMail application. This problem can be fixed by disabling power management, which is not needed on desktop computers. To turn off Power Management, follow these steps:

- 1) Click on the **START** button, select **SETTINGS**, then **CONTROL PANELS**.
- 2) Double-click the **POWER** icon.
- 3) Click on the checkbox labeled **Allow Windows to manage power use on this computer**. This will disable Power Management. Click **OK**.

Windows did not detect the Sony PCI Card.

If you have installed the Sony Funmail PCI Card but Windows 95 does not detect it, complete the following steps:

- 1) Click on the Windows 95 **START** button, select **SETTINGS**, then **Control Panel**.
- 2) Double-click the **Add New Hardware** icon.
- 3) The **Add New Hardware Wizard** will appear.
- 4) Windows will ask if you want it to search for your new hardware.
- 5) Select **NO**.
- 6) Press the **NEXT** button.
- 7) Select **SOUND, VIDEO, and GAME CONTROLLERS**.
- 8) Click on the **NEXT** button.
- 9) Click on the **HAVE DISK** button.
- 10) Insert the **FunMail Installation CD-ROM** and click **OK**.
- 11) The FunMail PCI Card drivers have now been installed.

APPENDIX C

Troubleshooting

The first part of the Troubleshooting Guide covers basic issues. Turn to the next page for detailed instructions on how to resolve hardware conflicts and other related problems.

When I launch FunMail, the video display window is black.

There are many possible causes, including:

- The camera is not turned on.
- The camera is not plugged into the wall.
- The camera A/C adapter is not plugged into the back of the camera.
- The audio/video cable is not connected properly.

Check all of your cable and power connections again.

An error message appears stating "Cannot connect to audio device"

You either do not have a sound card or it is not properly installed. Check the manual that came with your sound card for configuration help, or purchase a sound card if you don't have one.

I can see myself in the video display window, but the image is really fuzzy.

A certain amount of graininess is normal due to compression, but if the image is very blurry, adjust the black focus ring on the camera.

When I record and play back an audio/video clip, the video is fine, but there is no sound.

Possible Causes:

- The cables are not plugged in properly.
- Your speakers are not turned on or plugged in properly.
- Your Windows 95 Sound Preferences are not set properly.

Check your cables to make sure they are correctly inserted. If this doesn't fix the problem, check to make sure your speakers are turned on and that the volume is up. For further help, turn to "*Configuring Windows 95 Sound Properties*" in this manual.

APPENDIX C

Troubleshooting - Continued

When you attempt to run the FunMail application you receive the following error: "Cannot Connect to Sony PCI Device".

This problem arises from a hardware conflict in your system. Proceed to the following sections:

- a) **Determining if there is a conflict**
 - b) **Freeing System Resources**
-

Your computer stops working after the RECORD button is pressed.

This problem arises from a hardware conflict in your system. Proceed to the following sections:

- a) **Determining if there is a conflict**
 - b) **Freeing System Resources**
-

Windows cannot find the driver during installation.

On some systems during hardware detection and driver installation Windows will not find the driver file (**AVVXP524.VXD**) on the installation CD-ROM. If this occurs enter the following:

D:\ or D:\WIN95

Determining if there is a conflict.

- 1) Right-click on the **My Computer** icon on your desktop and select **Properties**.
- 2) Click on the **Device Manager** tab.
- 3) Double-click **Sound, Video, and Game Controllers**.
- 4) Select the **Sony PCI Video Device**.
- 5) Click on the **Properties** button.
- 6) Click the **Resources** tab.
- 7) Determine the conflict by reviewing the **Conflicting Device** list.
- 8) If there are no devices shown in the **Conflicting Device** list, the **Sony PCI Video Device** may have set itself to an interrupt in use by another device. See the next section to determine if the Sony PCI Card is set to an IRQ that is in use.

APPENDIX C

Troubleshooting - Continued

To determine if the Sony PCI Card is set to an IRQ that is in use by another device, complete the following steps:

- 1) Right-click on the **My Computer** icon on your desktop and select **Properties**.
- 2) Click the **Device Manager** tab.
- 3) Double-click the **Computer** icon at the top of the tree.
- 4) Make sure the **Interrupt Request (IRQ)** radio button is checked.
- 5) There are two columns: **Setting** and **Hardware Using the Setting**.
- 6) Scroll down until you find the **Sony PCI Video Device** in the **Hardware Using the Setting** column.
- 7) For each PCI card installed in your computer there will be two devices listed for each IRQ; the device itself and the **IRQ Holder for PCI Steering** device. These holders typically only appear for PCI devices.
- 8) If the **Sony PCI Video Device** is listed with it's holder **ONLY** then the device is not set to an IRQ in use by another device.
- 9) If the **Sony PCI Video Device** is listed along with another device and the holder (i.e. there are three devices listed for one IRQ), **there is a conflict**.

Once you have determined that the device is set to a conflicting IRQ you must either remove a device that is taking an IRQ or disable a device you are not using. Please go on to the next section, "Freeing System Resources".

Freeing System Resources

This section is intended for advanced users. You should always write down the steps you take during these procedures in case you must reverse your actions. There are three scenarios we will discuss concerning freeing system resources: **Printer Port**, **COM Ports**, and the **Universal Serial Bus (USB)**. Please read the **entire** section prior to performing any of the suggested procedures.

This process entails determining if a device is in use, then trying to disable the device. Once the device is disabled you must verify that it has been disabled.

APPENDIX C

Troubleshooting - Continued

Scenario 1 - You have no printer connected to your computer.

If you have no printer connected to your computer you can disable the **Printer Port** to free an IRQ. The **Printer Port** uses **IRQ 7** by default. To disable this device complete the following steps:

- 1) Right-click on the **My Computer** icon on your desktop and select **Properties**.
- 2) Click the **Device Manager** tab.
- 3) Click on the [+] sign next to **Ports (COM & LPT)**.
- 4) Double-click on **Printer Port (LPT1)**.
- 5) In the **Device Usage** section of the screen check the **Disable in this hardware profile** checkbox. Or, if you have an older release of Windows 95 uncheck the **Original Configuration** checkbox under the **Device Usage** section.
- 6) Restart your computer.

This process will free **IRQ7** so that it can be used by the Sony PCI Video Device.

NOTE: On older systems (Pentium 133 or less), or systems with an older system BIOS, Windows will not be able to completely disable this device. You must disable the device using your computer's system BIOS setup utility to manually disable the resource. Please refer to the documentation that came with your computer to disable the Printer Port using system BIOS. If the Sony PCI Card did not reset itself to the freed IRQ upon restart then you must use the system BIOS to disable the device.

You will know that system BIOS has disabled the **Printer Port** when it no longer appears in the **Device Manager** tree.

If you have a printer connected to your computer, go on to the next section.

APPENDIX C

Troubleshooting - Continued

Scenario 2 - See if there are COM ports in use

In this scenario you must first verify that there are no serial devices connected to your computer's COM ports, such as external modems, a serial mouse, a PalmPilot Dock (or other PDA) interface, etc. If you have an internal modem installed in your computer then one COM port must be assigned to your modem. Your computer can have up to four COM ports enabled.

To verify what devices are attached to your COM ports complete the following steps:

- 1) Click on the Windows 95 **START** button, select **SETTINGS**, then **Control Panel**.
- 2) Double-click the **MODEMS** icon.
- 3) Click the **Diagnostics** tab at the top of the dialog box.
- 4) You will see two columns of information: **Port** and **Installed**.
- 5) The **Port** number on the left lists your enabled COM ports.
- 6) The **Installed** items on the right are the devices attached to the COM ports.
- 7) If the right column shows **No Modem Installed**, there are no modems, mice, or other serial devices connected to your computer's COM ports.

To verify that you have a **PS/2® mouse** attached to your computer instead of a serial mouse, complete the following steps:

- 1) Right-click on the **My Computer** icon on your desktop, then select **Properties**.
- 2) Click the **Device Manager** tab.
- 3) Double-click the **Computer** icon at the top of the tree.
- 4) Make sure the **Interrupt Request (IRQ)** radio button is checked.
- 5) There are two columns: **Setting** and **Hardware using the setting**.
- 6) Scroll down until you find **Setting 12 (IRQ 12)**. If the **Hardware using the setting** is a **PS/2 Mouse**, then you are using a PS/2 mouse.

This section continues on the next page.

APPENDIX C

Troubleshooting - Continued

Scenario 3 - You have no USB devices attached.

The USB port is set to IRQ10 by default. If you have no USB devices attached to your computer, you can disable this device.

- 1) Right-click on the **My Computer** icon on your desktop and select **Properties**.
- 2) Click the **Device Manager** tab.
- 3) Double-click the Universal Serial Bus (USB) entry.
- 4) In the **Device Usage** section of the screen check the **Disable in this hardware profile** checkbox. Or, if you have an older release of Windows 95, un-check the **Original Configuration** checkbox in the **Device Usage** section.
- 5) Restart your computer.
- 6) This will free IRQ10 so that other devices (including the Sony PCI Video Card) can now use this resource.

NOTE: On older systems (Pentium 133 or less), or systems with an older system BIOS, Windows will not be able to completely disable this device. You must disable the device using your computer's system BIOS setup utility to manually disable the resource. Please refer to the documentation that came with your computer to disable the USB Ports using system BIOS. If the Sony PCI Card did not reset itself to the freed IRQ upon restart then you must use the system BIOS to disable the device.

You will know that system BIOS has disabled the **USB Ports** when they no longer appear in the **Device Manager** tree.

APPENDIX C

Troubleshooting - Continued

Scenario 2 - *Continued*

If there are none or only one of the COM ports in use you can disable one or both by completing the following steps:

- 1) Right-click on the **My Computer** icon on your desktop and select **Properties**.
- 2) Click the **Device Manager** tab.
- 3) Click on the **[+]** sign next to **Ports (COM & LPT)**.
- 4) Double-click on each **Communication Port (COM1, etc.)** you wish to disable.
- 5) In the **Device Usage** section of the screen check the **Disable in this hardware profile** checkbox. Or, if you have an older release of Windows 95, un-check the **Original Configuration** checkbox in the **Device Usage** section.
- 6) This will free **IRQ3 and/or IRQ4** so that other devices (including the Sony PCI Video Card) can use these resources.
- 7) Restart your computer.

NOTE: On older systems (Pentium 133 or less), or systems with an older system BIOS, Windows will not be able to completely disable this device. You must disable the device using your computer's system BIOS setup utility to manually disable the resource. Please refer to the documentation that came with your computer to disable the COM Ports using system BIOS. If the Sony PCI Card did not reset itself to the freed IRQ upon restart then you must use the system BIOS to disable the device.

You will know that system BIOS has disabled the **COM Ports** when they no longer appear in the **Device Manager** tree.

If you are using the Printer Port and have COM ports that are in use, go on to the next scenario.

STEP 2

Check the contents of the FunMail carton for the required accessories:

- **FunMail Installation CD-ROM**
- **Sony PCI Video Card**
- **Sony Color Desktop Camera**
- **Sony Camera A/C Adapter**
- **Audio/Video Cable**
- **Sound Card Adapter Plug**

STEP 3

Install the Sony PCI Video Card:

- If your computer is turned on, save your work and shut down.
- **Caution:** Unplug your computer's power cord and remove the power cable from your computer.
- Remove the cover from your computer system. Refer to your computer's User's Guide if you have any trouble opening the case.
- Locate an empty PCI slot. PCI slots are typically white and smaller than other slots.
- Remove the PCI Slot cover plate using your Phillips screwdriver. Save the plate and screw. **See Page 8 in the FunMail User's Guide for details.**
- Remove the **Sony PCI Video Card** from its protective bag. Be sure that you ground yourself against static electricity, which can damage the Sony PCI Video Card as well as components inside your computer. **See Page 9 in the FunMail User's Guide for further details.**
- Gently insert the card into the empty PCI slot using firm pressure, but don't force it! You will hear a click when the card is properly seated.
- Use the screw from the cover plate to secure the **Sony PCI Video Card** to the computer's chassis.
- Replace the cover and plug your computer back into the wall.

NOTE: Detailed instructions with illustrations can be found in your **FunMail User's Guide**.

STEP 4

Make the Connections:

- Prepare the **Audio/Video Cable:** Insert the **Sound Card Adapter** into one of the black connectors on the **Audio/Video Cable**. **See Page XX in the FunMail User's Guide for Details.**
- Connect the **Video Cable:** One yellow end connects to the yellow jack on the back of the **Sony PCI Video Card**; the other end connects to the yellow **VIDEO** jack on the back of the camera.
- Connect the **Audio Cable:** The black plug with the **Sound Card Adapter** attached connects to the sound card **MIC** jack; the other end connects to the black **AUDIO** jack on the back of the camera.
- Connect the **A/C Power Adapter:** The **Sony Camera A/C Power Adapter** plug connects to the **DC IN 4.5V** jack on the back of the camera.
- Plug the **Sony Camera A/C Power Adapter** into the wall.

NOTE: Detailed instructions with illustrations can be found in your **FunMail User's Guide**.

STEP 5

Install the Drivers:

- Power on your computer.
- Windows will detect the **Sony PCI Video Card** and display a "New Hardware Found" dialog box.
- Insert the **Sony Installation CD-ROM**.
- Windows will install the drivers and display a dialog box stating: "New Hardware Found: Sony PCI Video Device".
- Windows will either continue to boot or prompt you to restart. Choose restart if prompted.

STEP 6

Install the FunMail Application:

- When Windows has finished booting, insert the **FunMail Installation CD-ROM**.
- Double-click the "My Computer" desktop icon.
- Double-click the icon for your computer's **CD-ROM** drive.
- Locate and double-click the "Setup" icon.
- The **Setup Utility** will now install the **FunMail Application** onto your computer's hard drive.
- Follow the on-screen instructions to complete the installation.

STEP 7

Configure Windows®95 Sound Properties:

- Double-click the **speaker-shaped icon** in the lower right corner of the **Windows Taskbar**. If you do not see this icon, click the **START** button, click on **PROGRAMS**, then **ACCESSORIES**, click on **MULTIMEDIA**, and finally **VOLUME CONTROL**.
- Make sure the "Mute" box under the "Microphone" slider is checked. If not, click on the box to place a check mark in it now.

Note: When you first use the **FunMail Application**, you may notice that the microphone levels are too loud or too soft. To adjust the microphone sensitivity, perform the following steps:

- Open the **VOLUME CONTROL** panel as described above.
- Under the **OPTIONS** pull-down menu, select **PROPERTIES**.
- Click on the "Recording" radio button and press **OK**.
- Use the "Microphone" slider to adjust the sensitivity of the microphone.
- Make sure the "Select" box is checked under the "Microphone" slider.

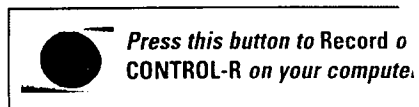
You may need to experiment with the microphone settings to achieve an optimum sensitivity level. You can change the **VOLUME CONTROL** settings whenever you like.

STEP 8

Using FunMail:

- Launch the **FunMail** application by clicking the **Windows START** button, select **PROGRAMS**, select the **FunMail** sublisting, and click on **FunMail**.

FunMail features an easy-to-use interface with familiar VCR controls. To create a new FunMail clip, press the **RECORD** button. When you want to stop recording, click on the **STOP** button. When the clip is recorded, click on the **PLAY** button. Again, to insert a new clip, click on the **STOP** button. You may also enter your own custom text message by clicking on the **TEXT** button, click on the existing text message and delete what you want. You can either save your FunMail clip to disk by clicking on the **SAVE** button or send the message via email using the **SEND** button. See your FunMail manual for more details.



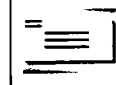
Press this button to Record or press the **CONTROL-R** on your computer keyboard.



Press this button to Play or press the **CONTROL-P** on your computer keyboard.



Press this button to Save or press the **CONTROL-V** on your computer keyboard.



Press this button to Send or press the **CONTROL-E** on your computer keyboard.



Press this button to Stop or press the **ESC** key on your computer keyboard.

ENTER MESSAGE HERE:

Enter up to a 64 character text message into the Scrolling Text Bar.

Technical Support Services

Sony Computer Peripherals Technical Support:
Sony Service Center Locations:

(800) 597-5642
(800) 342-5722

©1998 Sony Electronics Inc.
Sony and FunMail are trademarks of Sony.
Reproduction in part or in whole without written permission is prohibited. All rights reserved.
Microsoft, Windows, and Windows NT are trademarks of Microsoft Corporation.
Other brands and trademarks are the property of their respective owners.

STEP 5

- Power on your computer.
- Windows will detect the new hardware and display the Hardware Found dialog box.
- Insert the Sony Installation Disk.
- Windows will install the software.
- Found: Sony PCI VCR.
- Windows will either install or prompt you to install the software.

STEP 6

- When Windows prompts you to insert the Sony Installation Disk, insert it.
- Double-click on the Sony Installation Disk icon.
- Double-click on the Setup icon.
- Locate and click on the Setup icon.
- The Setup program will start.
- Follow the prompts on the screen.

STEP 7

- Double-click on the Taskbar icon.
- Then click on the Taskbar icon.
- Make sure the Taskbar icon is on the Taskbar.

Note: The microphone icon is not shown on the Taskbar.



2 YEAR LIMITED WARRANTY

SONY ELECTRONICS INC. ("SONY") warrants this video e-mail product (the "Product") against defects in material or workmanship as follows:

1. **LABOR:** For a period of two (2) years from the original date of purchase from SONY or its local representative supplier, SONY will repair defective Product (or, at its option, replace with a new or reconditioned Product) at no charge. After this 2 year period, you must pay for all labor charges.

2. **PARTS:** For a period of two (2) years from the original date of purchase from SONY or its local representative supplier, SONY will supply, at no charge, new or rebuilt replacement parts in exchange for defective parts of this Product. Any replacement parts will be warranted for the remainder of the original warranty period or ninety (90) days from installation by SONY. All exchanged parts replaced under this warranty will become the property of SONY.

This warranty only covers the hardware components packaged with the Product. This warranty does not cover any software contained in or included with the Product; any such software is provided "AS IS". Please refer to any documentation included with the software for your rights and obligations with respect to the software.

This warranty extends only to you, the original purchaser. It is not transferable to anyone who subsequently purchases the Product from you.

Proof of purchase in the form of a bill of sale (which is evidence that the Product is within the warranty period) must be presented to obtain warranty service.

To obtain warranty service you must take the Product, or deliver the Product freight prepaid, in either its original package or packaging providing the Product with a degree of protection equivalent to that of the original packaging to SONY. Please contact SONY at the number listed below for further information.

SONY is not responsible for any damage to or loss of any programs, data, or other information stored on any media or any part of any Product serviced hereunder. Be sure to remove all features, parts, options, alterations, and attachments not under warranty prior to returning the Product to SONY. SONY is not liable for any loss or damage to these items.

This Limited Warranty does not cover any consumable (such as batteries) supplied with this Product; cosmetic damages; damage or loss to any software programs, data, or removable storage media; or damage due to (1) acts of God, accident, misuse, abuse, negligence, abnormal, or unusually heavy use, causes external to the Product such as but not limited to excessive heat or humidity, or modifications of this Product; (2) improper installation, operation,

testing or maintenance of this Product; (3) power failure or connection to improper voltage supply; or (4) attempted repair by any party other than SONY. This Limited Warranty does not apply when the malfunction results from the use of this Product in conjunction with accessories, products or ancillary or peripheral equipment, or where it is determined by SONY that there is no fault with this Product itself. This warranty is valid only in the United States of America.

This Limited Warranty is invalid if the factory applied serial number has been altered or removed from the Product.

REPAIR OR REPLACEMENT AS PROVIDED UNDER THIS WARRANTY IS THE EXCLUSIVE REMEDY OF THE CONSUMER. SONY SHALL NOT BE LIABLE FOR ANY INCIDENTAL OR CONSEQUENTIAL DAMAGES FOR BREACH OF ANY EXPRESS OR IMPLIED WARRANTY, BREACH OF CONTRACT, NEGLIGENCE, STRICT LIABILITY OR ANY OTHER LEGAL THEORY RELATED TO THIS PRODUCT. SUCH DAMAGES INCLUDE, BUT ARE NOT LIMITED TO, LOSS OF PROFITS, LOSS OF REVENUE, LOSS OF DATA, LOSS OF USE OF THE PRODUCT OR ANY ASSOCIATED EQUIPMENT, DOWN TIME AND PURCHASER'S TIME. EXCEPT TO THE EXTENT PROHIBITED BY APPLICABLE LAW, ANY IMPLIED WARRANTY OF MERCHANTABILITY OR FITNESS FOR A PARTICULAR PURPOSE ON THIS PRODUCT IS LIMITED IN DURATION TO THE DURATION OF THIS WARRANTY.

Some states do not allow the exclusion or limitation of incidental or consequential damages, or allow limitations on how long an implied warranty lasts, so the above limitations or exclusions may not apply to you. This warranty gives you specific legal rights, and you may have other rights which vary from state to state.

For the location of your nearest Sony Service Facility please call the following number:

SONY SERVICE CENTER LOCATIONS 800 342-5721

Save this for future reference.

©1998 Sony Electronics Inc. Reproduction in whole or in part without written permission is prohibited. All rights reserved.

Sony and Funmail are registered trademarks of Sony.

P/N 4-634-332-12

Printed in the USA

2 YEAR LIMITED WARRANTY REGISTRATION

Thank you for choosing FunMail video e-mail system. We want to provide you with services and products that will make you choose Sony again in the future. Please take a moment to complete the attached postage paid card and return to us.

Name _____

Company Name _____

Address _____

Phone _____

City, State, Zip _____

Fax _____

Model Purchased: _____

What brands of computer video products do you buy? _____

Date Purchased: _____

Where Purchased:

- ☐ Computer Retailer ☐ Distributor/Reseller ☐ Electronics Superstore
☐ Catalog

Please indicate from 1 - 4, (1 being the primary function) how you will use this product:

- ☐ Web Page ☐ Personal Messages ☐ Business Sales
☐ Business Communication

What environment do you use this product in:

- ☐ Home ☐ Home Office ☐ Corporate

Why did you choose Sony? (ONLY choose 2, thank you)

- ☐ Product Performance ☐ Product Reliability ☐ Software Included
☐ Dealer Recommended ☐ Price ☐ Sony Reputation
☐ Other:

How did you learn about this product?

- ☐ Advertisement ☐ Magazine Article ☐ Reseller/Dealer Catalog
☐ Reseller Recommended ☐ Trade Show ☐ In Store Display
☐ Sony Web Site

Have you bought a Sony computer video product before:

- ☐ Yes ☐ No If yes, what product(s)?

Comments: _____

SONY

Separate this card at the perforation above, fold along the score below, tape closed, and mail



BUSINESS REPLY

FIRST CLASS MAIL PERMIT NO. 2008

POSTAGE WILL BE PAID BY ADDRESSEE

**SONY ELECTRONICS INC.
VALUE ADDED PRODUCT™
3300 ZANKER ROAD
SAN JOSE, CA 95134**

PRODUCT WARRANTY

REGISTRATION ENCLOSED

SONY



FunMail features an e-
new FunMail clip.
When you want
recorded, click
You may
click
to

For product information, service assistance
or resolution of a service problem, call:

Sony Customer Technical Support
800-597-5649

or write to:

Sony Customer Technical Support
Mail Drop SJ-Ford
3300 Zanker Road
San Jose, CA 95134-1940



SONY

FunMail™ Video Email System

Quick Start

To install your **FunMail Video Email System**, please follow the steps below. For more detailed information, please refer to the included **User's Guide**. Sony is serious about customer support. If you should encounter difficulty during the installation, please see the back of this Quick Start card to learn how to obtain technical support.

STEP 1

Check your computer system for the following minimum system requirements:

- ***Microsoft® Windows® 95***
- ***Pentium® 66MHz or higher***
- ***One Available PCI Slot***
- ***One Available Interrupt Request Line (IRQ)***
- ***16 Megabytes of RAM***
- ***640x480 Resolution SVGA with 256 colors or more***
- ***A CD-ROM Drive***
- ***10 Megabytes of Free Hard Disk Space***
- ***A 16-Bit SoundBlaster® Compatible Sound Card***
- ***Computer Speakers***
- ***An Email Account and Email Software***
- ***A Modem or Network Email Service***

These are minimum system requirements; however, a faster processor with more RAM and hard disk space may increase the overall performance of the FunMail application.

You may also need some tools to remove the cover from your computer or PCI slot, including:

- ***A Phillips Screwdriver***
- ***A Flat-blade Screwdriver***
- ***A Pair of Pliers***

Technical Support

Sony Computer Peripherals Technical Support

(800) 597-5649

Sony Service Center Locations

(800) 342-5721

©1998 Sony Electronics Inc. Reproduction in whole or in part without written permission is prohibited.
All rights reserved. Sony and FunMail are trademarks of Sony. Microsoft, Windows, Windows NT,
Microsoft Outlook, Microsoft Exchange and Microsoft Internet Explorer are trademarks of Microsoft
Corporation. All other trademarks are the property of their respective owners.

SONY

APPENDIX D

Technical Information

Declaration of FCC Compliance

Approved FCC Part 15, Subpart B and Industry Canada ICES-003 issue 2

United States:

This device complies with Part 15 of the FCC Rules. Operation is subject to the following two conditions: (1) this device may not cause harmful interference, and (2) this device must accept any interference received, including interference that may cause undesirable operation.

Changes or modifications not expressly approved for compliance could void the user's authority to operate this equipment.

Canada:

This Class B digital apparatus meets all requirements of the Canadian Interference Causing Equipment Regulations.

Cet appareil numérique de la classe B respecte toutes les exigences du Règlement sur le matériel brouiller du Canada.

Equipment Tested:	Video Capture Card
Trade Name:	Zap International, Inc.
Model Number:	Zap! Video Email System
Serial Number:	Not Applicable
Applicant:	Zap International, Inc.
Address:	464 Monterey Avenue, First Floor Los Gatos, California 95030
Telephone:	(408) 399-3141
Fax:	(408) 399-3151
Applicable Regulation:	Class B
Test Site Location:	ITS - Site 1 1365 Adams Drive Menlo Park, CA 94025
Date of Test:	December 16, 1997