

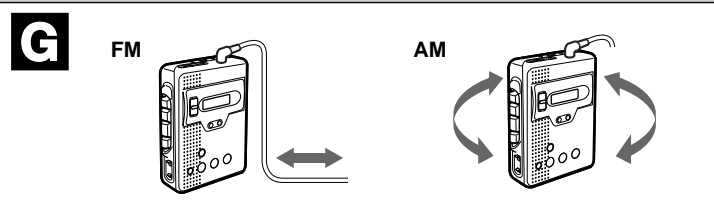
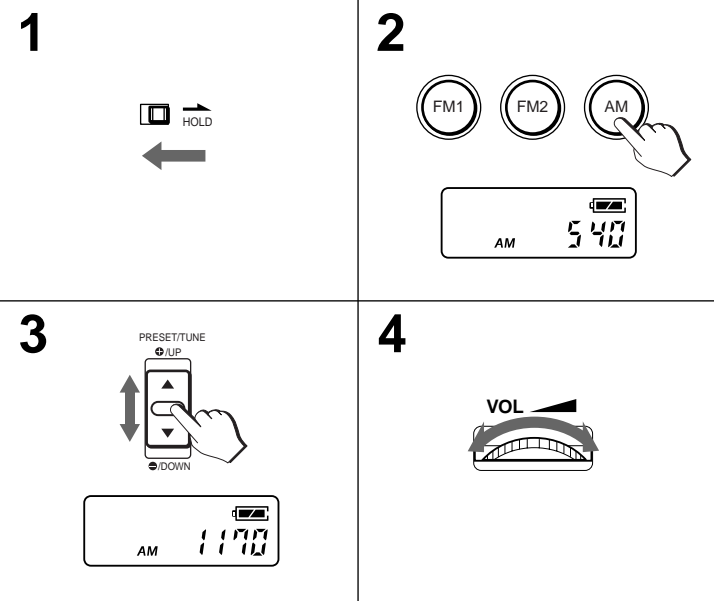
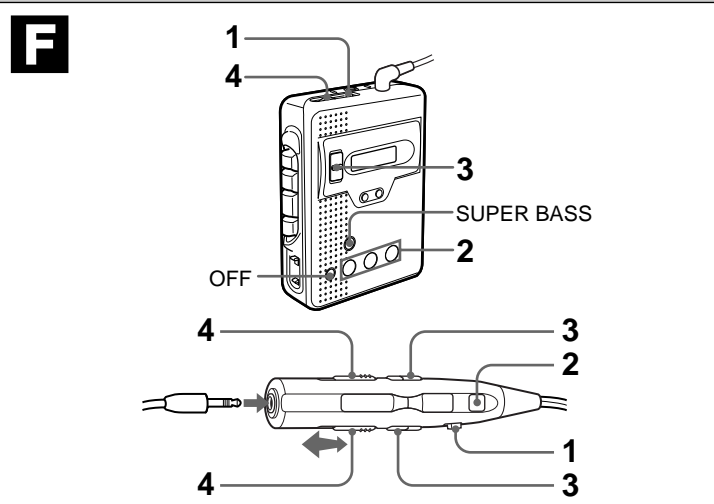
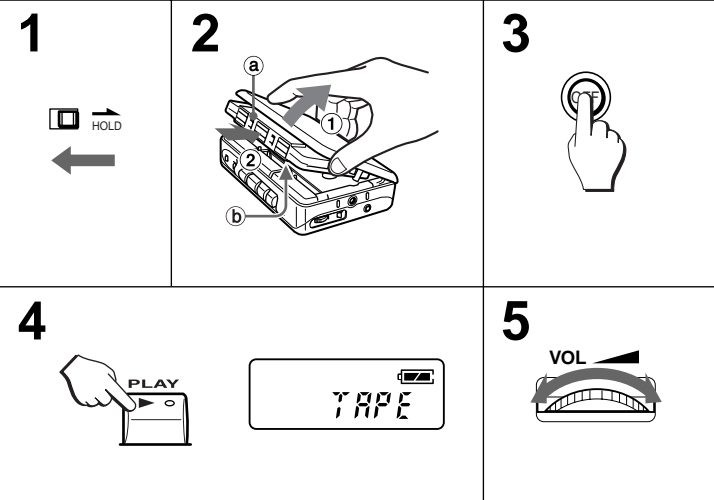
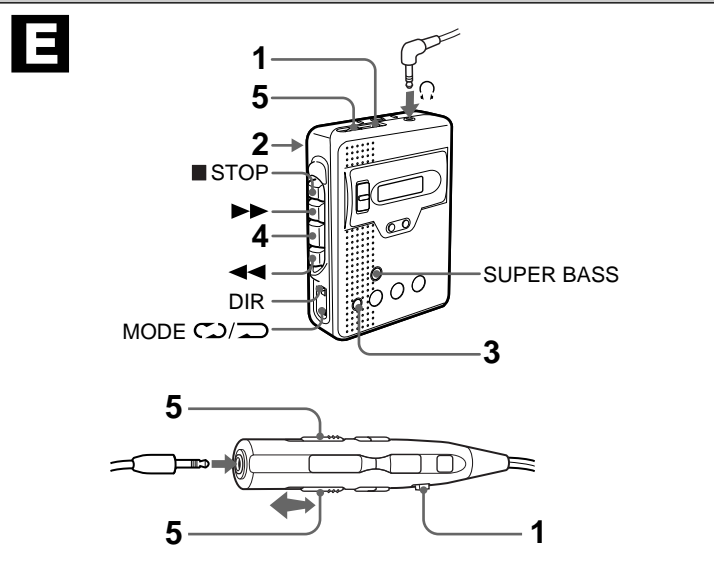
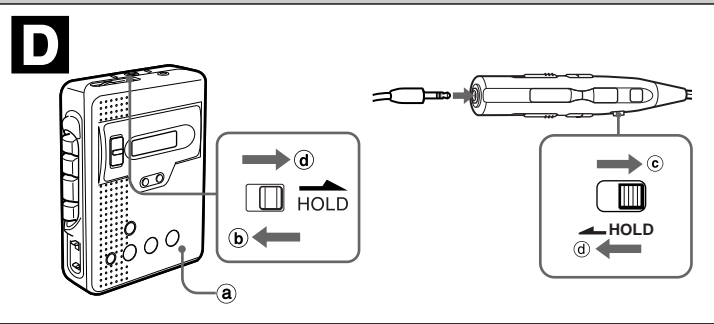
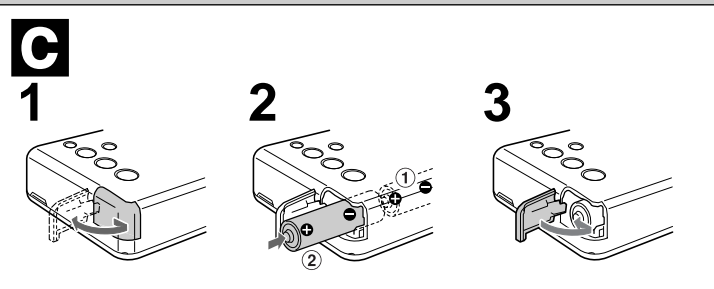
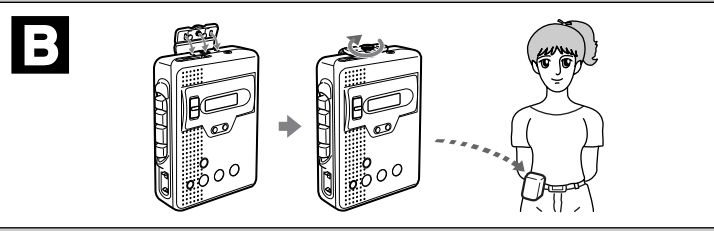
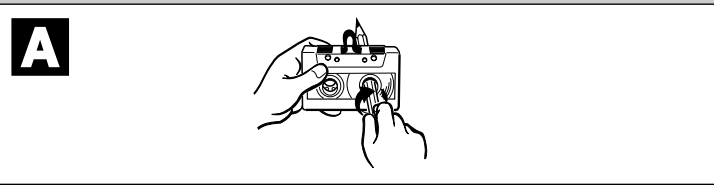
# HS-RM539

STEREO RADIO CASSETTE PLAYER

## OPERATING INSTRUCTIONS

Sony Corporation ©2003 Printed in China

http://www.aiwa.com/



ENGLISH

## PRECAUTIONS

### To maintain good performance

- Do not use the unit in places which are extremely hot, cold, dusty or humid. In particular, do not keep the unit:
  - in a high humidity area such as a bathroom
  - near a heater
  - in an area exposed to direct sunlight (e.g., inside a parked car, where there could be a considerable rise in temperature).

### Note on listening with the headphones

- Listen at a moderate volume to avoid hearing damage.
- Do not wear the headphones while driving or cycling. It may create a traffic hazard.
- You should use extreme caution or temporarily discontinue use in potentially hazardous situations, such as walking, jogging, etc.
- Wear them properly; L is left, R is right.
- When using the in-ear type headphones, wear them with the longer cord behind your neck.

### CAUTION

Listening to headphone stereo at full power for extended periods of time can result in hearing damage.

### Note on cassette tapes


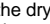


- Take up any slack in the tape with a pencil or a similar tool before use. Slack tape may break or jam in the mechanism. → **A**
- C-100 or longer tapes are extremely thin and easily deformed or damaged. They are not recommended for use in this unit.

To use with the belt clip → **B**

## USING ON DRY CELL BATTERIES → **C**

Insert two R6 (size AA) dry cell batteries with the  and  marks correctly aligned.

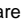
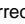
### Battery replacement

The battery indicator in the display window changes from  to  to  depending on the remaining power of the dry cell batteries. Replace the batteries when the battery indicator becomes , and starts flashing, tape speed slows down, volume decreases, or sound becomes distorted.


### To maintain preset data

- When replacing the batteries, the unit will retain the preset station frequencies for about 1 minute. To prevent the erasure of the memories, replace the batteries within 1 minute.
- If non remote control headphones are used, unplug the headphones before taking out the batteries.


### Note on dry cell batteries


- Make sure that the  and  marks are correctly aligned.
- Do not mix different types of batteries, or an old battery with a new one.
- Never recharge the batteries, apply heat to them or take them apart.
- When not using the batteries, remove them to prevent needless wear.
- If liquid leaks from the batteries, wipe thoroughly to remove.

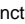
## HOLD SWITCH → **D**

The HOLD switch on the main unit deactivates the buttons on the front cabinet  of the main unit.

The HOLD switch on the remote control deactivates the buttons on the remote control.


**When operating with the main unit**, release the HOLD switch on the main unit. → 

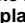
**When operating with the remote control**, release the HOLD switch of the remote control. → 

**When not using the unit**, set both HOLD to the hold position. → 

Accidentally pressed buttons will not function.






## PLAYBACK → **E**

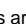



- Use only Type I (normal) tapes.
- Connect the supplied headphones to the remote control and connect the remote control to the  jack on the main unit.

- Release the HOLD switch.**
- Open the cassette holder and insert a cassette.**
  - Front side
  - Reverse side
- Press the OFF button to turn off the radio, if it is on.**
- Press the  PLAY button to start playback.**  
"TAPE" is displayed on the window.
- Adjust the volume.**


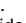
### Basic operation


Press the following buttons.


To fast forward	 on the front side.  on the reverse side.
To rewind	 on the front side.  on the reverse side.
To stop	

- The  and  buttons are not released at the end of the tape. Press the  STOP button to release them.
- To prevent tape damage, press the  STOP button first before changing to radio mode.

### To change the playback side


Set the DIR switch to  or .

 : To play back front side.

 : To play back reverse side.

### Super bass

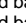
Press the SUPER BASS button to emphasize the low frequencies.

 appears in the display. Press it again to resume the normal sound.

 disappears from the display.

### Reverse mode



Set the MODE  switch to  or .

 : Both sides are played back repeatedly.

 : Both sides are played back once.

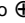
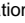
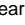

Playback stops at the end of the reverse side. When you change the playback side during reverse side playback, the tape will stop.

## RADIO RECEPTION → **F**

- Release the HOLD switch.**
- Press the FM1, FM2 or AM button to select the band (FM1, FM2 or AM).**  
FM1 and FM2 have the same frequency range and both can be used to tune in to an FM station.  
To operate with the remote control, press the RADIO ON/OFF BAND button repeatedly. If PRESET is shown in the display, press the MODE button so that PRESET disappears. When operating with the remote control, this procedure is not necessary.
- Slide the PRESET/TUNE switch to  UP or  DOWN repeatedly to tune in to a station.**  
To operate with the remote control, press the TUN UP or DOWN button repeatedly.
- Adjust the volume.**

**After listening**, press the OFF switch to turn off the radio. You can turn off the radio also by keeping the RADIO ON/OFF BAND button on the remote control pressed for more than 2 seconds.

### For quick tuning


Keep the PRESET/TUNE switch slid to  UP or  DOWN until the frequency in the display starts to change rapidly. If a station is tuned in to, searching pauses and after 3 seconds searching resumes. To stop searching, slide the PRESET/TUNE switch to  UP or  DOWN shortly.

To operate with the remote control, keep the TUN UP or DOWN button pressed.

### Super bass

Press the SUPER BASS button to emphasize the low frequencies.

 appears in the display. Press it again to resume the normal sound.

 disappears from the display.

### For better reception → **G**

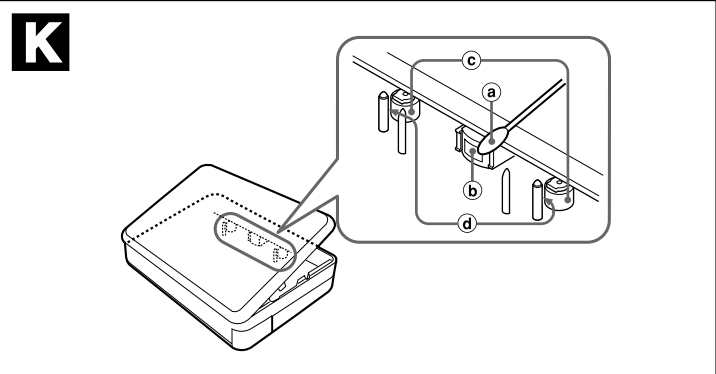
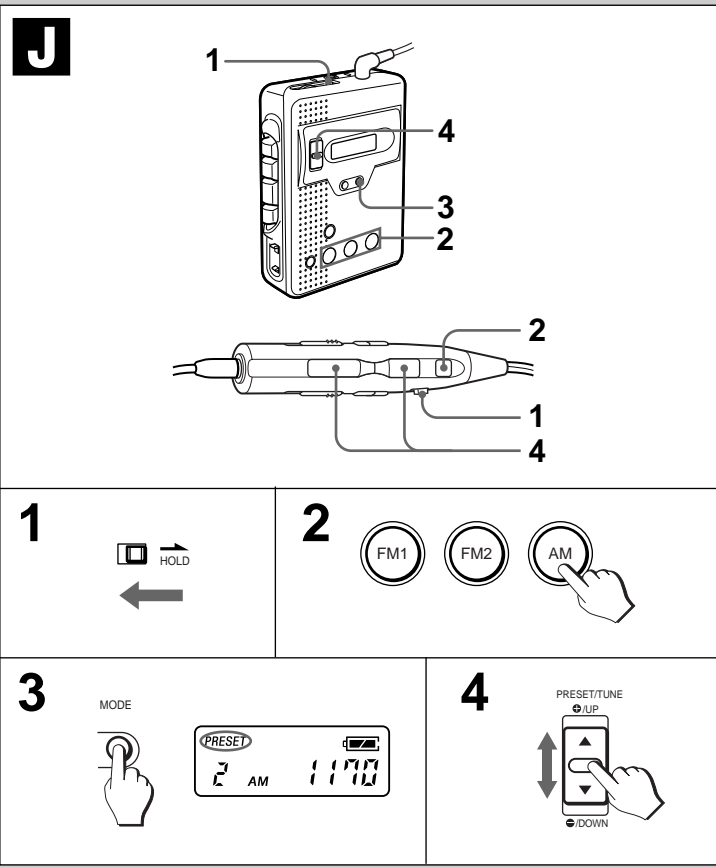
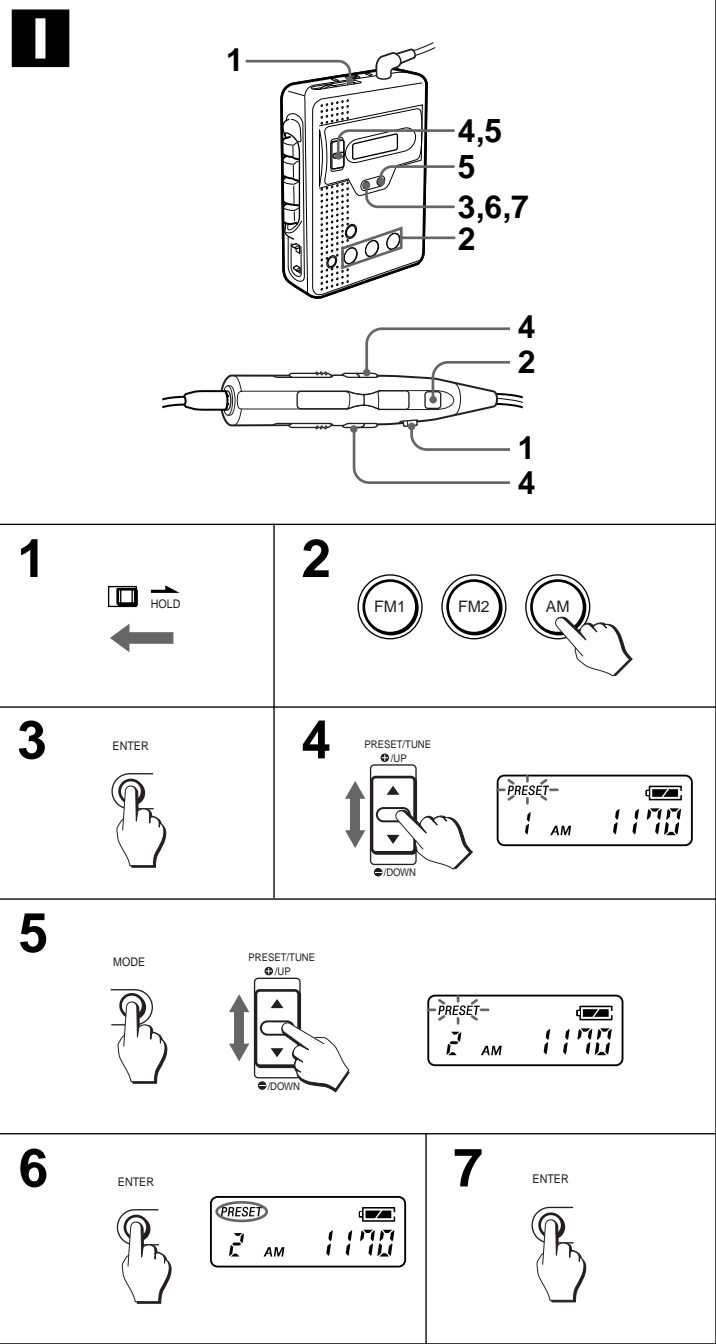
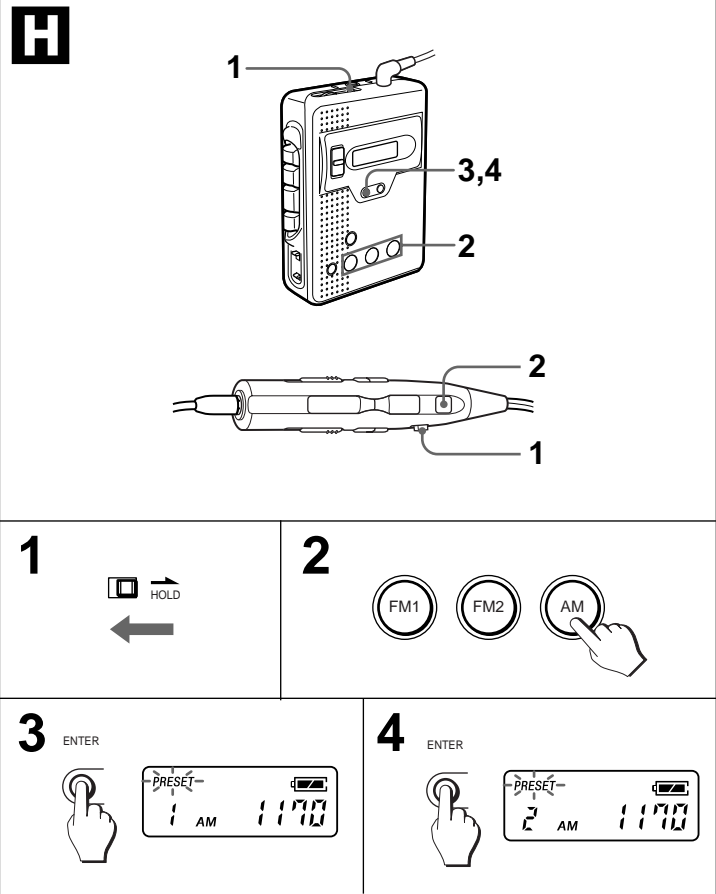
FM: The headphone cord functions as the antenna. Keep it extended.

AM: Turn the unit to find the position that gives best reception.

### About the FM stereo broadcast

The FM stereo broadcast is received in stereo.

However, the sound may be heard in monaural when the FM stereo signal is weak.



ENGLISH

## PRESETTING

### Automatic presetting → H

You can preset up to 40 stations in total; 15 stations for each FM1 and FM2, 10 stations for AM.

- 1 Release the HOLD switch.
- 2 Press the FM1, FM2 or AM button to select the band (FM1, FM2 or AM).  
To operate with the remote control, press RADIO ON/OFF BAND repeatedly.
- 3 Keep the ENTER button pressed for about 4 seconds.  
PRESET flushes, and the unit starts to search the receivable stations from the lowest to the highest end of the frequency range on the selected band.
- 4 The frequency indication pauses for 3 seconds when a station is received. To store the station, press the ENTER button. To skip the station, wait for about 3 seconds without pressing any button.  
The frequency starts to change again.  
Repeat this procedure each time the searching pauses.  
When the searching reaches to the highest end of the frequency range on the selected band, automatic presetting ends.

### To cancel the automatic presetting

Keep the ENTER button pressed for about 4 seconds.

### Manual presetting → I

Store stations manually when the desired stations cannot be stored by Automatic presetting.

- 1 Release the HOLD switch.
- 2 Press the FM1, FM2, or AM button to select the band (FM1, FM2, or AM).  
To operate with the remote control, press the RADIO ON/OFF BAND button repeatedly.
- 3 Press the ENTER button.  
PRESET starts flashing in the display.
- 4 Tune in to the station you want to store.
- 5 While keeping the MODE button pressed, slide the PRESET/TUNE switch to UP/UP or DOWN/DOWN to select the preset number you want the station to be stored.
- 6 Press the ENTER button.  
The station is stored, and the preset number increases by one.  
Repeat the steps 4 to 6 for more stations.
- 7 Hold the ENTER button pressed for about 2 seconds to end the manual presetting.

### To change the presetting

Repeat the procedure from the step 1.

### Listening to preset stations → J

- 1 Release the HOLD switch.
- 2 Press the FM1, FM2 or AM button to select the band (FM1, FM2 or AM).  
To operate with the remote control, press the RADIO ON/OFF BAND button repeatedly.
- 3 Press the MODE button so that PRESET appears in the display.
- 4 Slide the PRESET/TUNE switch to UP/UP or DOWN/DOWN to select the desired preset number.

### When operating with the remote control

You can skip the step 3.  
Press the PRESET UP or DOWN button repeatedly in the step 4 to select the preset number.

After listening, press the OFF button to turn off the radio. You can turn off the radio also by keeping the RADIO ON/OFF BAND button on the remote control pressed for more than 2 seconds.

## MAINTENANCE → K

### To clean the head and the tape path

After every 10 hours of use, clean the head and the tape path with a head cleaning cassette or cotton swab moistened with cleaning fluid or denatured alcohol. (These cleaning kits are commercially available.) When cleaning with a cotton swab @, wipe the playback head @, the pinch rollers @ and the capstans @.

### To clean the cabinet

Use a soft cloth lightly moistened with a mild detergent solution. Do not use strong solvents such as alcohol, benzene or thinner.

## SPECIFICATIONS

Frequency range:	AM 531 – 1,602 kHz (9 kHz steps) FM1, FM2 87.5 – 108 MHz (50 kHz steps)
Maximum output:	8.0 mW + 8.0 mW (JEITA 32 ohms)
Load impedance:	16 – 80 ohms
Power source:	DC 3 V using two R6 (size AA) dry cell batteries
Battery life (JEITA, 0.2 mW output, playback):	Approx. 7 hours using R6P (size AA) manganese batteries Approx. 25 hours using LR6 (size AA) alkaline batteries
Maximum outside dimensions (W × H × D):	88.3 × 115 × 29.8 mm (excluding projecting parts and controls)
Weight:	Approx. 148 g (excluding batteries)
Accessories:	Stereo headphones (1) Remote control (1) Belt clip (1)

The specifications and external appearance of this unit are subject to change without prior notice.