

SONY

3-786-150-21 (1)

FM/AM 2 Band Receiver

ICF-350W

Operating Instructions

Before operating the unit, please read this manual thoroughly and retain it for future reference.

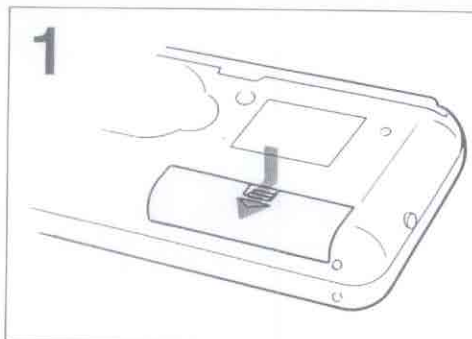
Precautions

- Operate the unit only on 3 V DC.
- Do not leave the unit in a location near heat sources such as radiators or airducts, or in a place subject to direct sunlight, excessive dust, moisture, rain, mechanical vibration or shock.
- Should any solid object or liquid fall into the unit, remove the batteries, and have the unit checked by qualified personnel before operating it any further.
- When the casing becomes soiled, clean it with a soft cloth dampened with mild detergent solution. Never use abrasive cleansers or chemical solvents, as they may mar the casing.

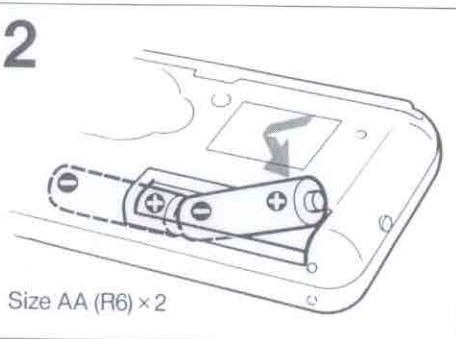
If you have any question or problem concerning your unit that is not covered in this manual, please consult your nearest Sony dealer.

Battery Installation

1

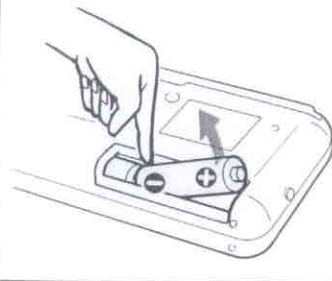


2



Size AA (R6) × 2

To remove the batteries

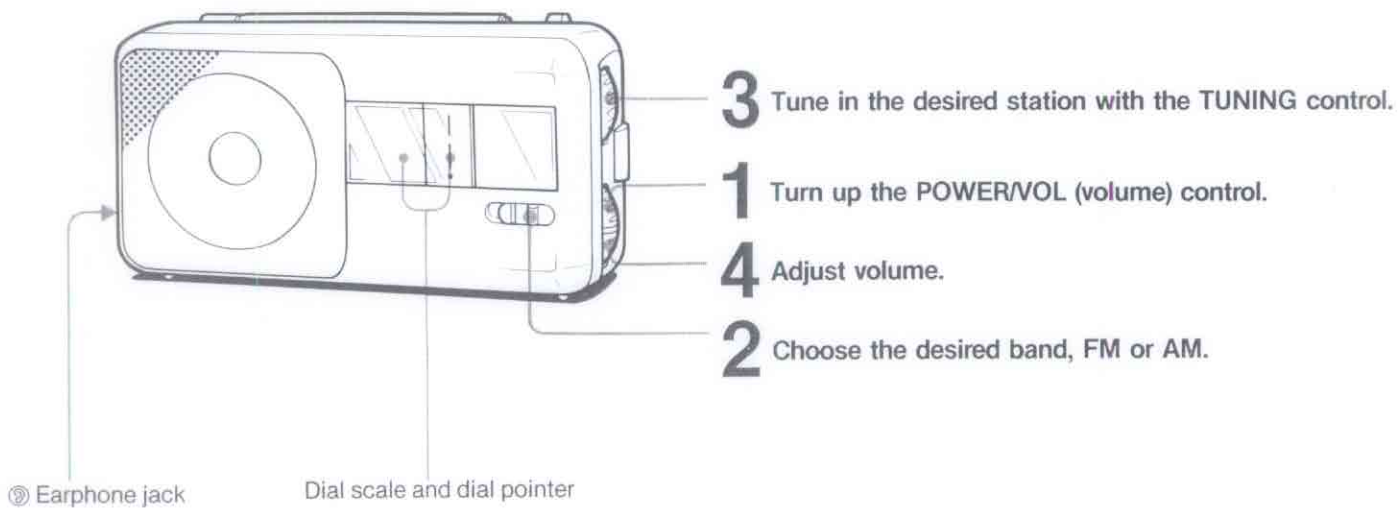


Battery Replacement

When the sound becomes weak or distorted, replace all the batteries with new ones. Concerning the battery life, see "Specifications".

When the unit is not to be used for a long period of time, remove the batteries to avoid damage caused by battery leakage and corrosion.

Radio Operation



After listening

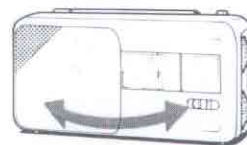
Turn down the POWER/VOL control completely until a click is heard.

To Improve Receiving Condition

FM: Extend the telescopic antenna and adjust the length and angle for the best reception.



AM: Since the reception is affected by the direction of the radio, rotate the unit horizontally for optimum reception.



Troubleshooting Guide

Should any problem persist after you have made the following checks, consult the nearest Sony dealer.

Sound does not come on at all.

- The POWER/VOL (volume) control is turned down.
- An earphone is plugged in.
- Incorrect polarity of batteries
- The batteries are exhausted.

Very weak or interrupted sound, or unsatisfactory reception

- Weak batteries
- Improper tuning
- Improper adjustment of the antenna
- In a building or a vehicle, listen near a window.

Specifications

Frequency range	FM: 87.6 – 108 MHz AM: 530 – 1,605 kHz
Antennas	FM: Telescopic antenna AM: Built-in ferrite bar antenna
Speaker	Approx. 5.7 cm (2 ¹ / ₄ inches) dia.
Power output	100 mW (at 10% harmonic distortion)
Output	Earphone jack (minijack)
Power requirements	3 V DC, two size AA (R6) batteries
Battery life	Approx. 30 hours of listening (for four hours a day at a normal volume), using Sony batteries SUM-3 (NS) Approx. 50 hours, using Sony alkaline batteries AM3
Dimensions	Approx. 156 × 77.5 × 35.5 mm (w/h/d) (6 ¹ / ₄ × 3 ¹ / ₈ × 1 ⁷ / ₁₆ inches) incl. projecting parts and controls with the carrying handle pushed in
Weight	Approx. 280 g (9.9 oz), incl. batteries

Design and specifications subject to change without notice.

When Carrying the Radio

