

SONY

3-861-712-11 (1)

***Scanning Receiver
Controller for
ICF-SC1PC***

Operating Instructions

NOTICE TO USERS

Program © 1998 Sony Corporation
Documentation © 1998 Sony Corporation

All rights reserved. This manual or the software described herein, in whole or in part, may not be reproduced, translated or reduced to any machine readable form without prior written approval from Sony Corporation.

SONY CORPORATION PROVIDES NO WARRANTY WITH REGARD TO THIS MANUAL, THE SOFTWARE OR OTHER INFORMATION CONTAINED HEREIN AND HEREBY EXPRESSLY DISCLAIMS ANY IMPLIED WARRANTIES OF MERCHANTABILITY OR FITNESS FOR ANY PARTICULAR PURPOSE WITH REGARD TO THIS MANUAL, THE SOFTWARE OR SUCH OTHER INFORMATION.

IN NO EVENT SHALL SONY CORPORATION BE LIABLE FOR ANY INCIDENTAL, CONSEQUENTIAL OR SPECIAL DAMAGES, WHETHER BASED ON TORT, CONTRACT, OR OTHERWISE, ARISING OUT OF OR IN CONNECTION WITH THIS MANUAL, THE SOFTWARE OR OTHER INFORMATION CONTAINED HEREIN OR THE USE THEREOF.

Sony Corporation reserves the right to make any modification to this manual or the information contained herein at any time without notice.

The software described herein may also be governed by the terms of a separate user license agreement.

Microsoft®, Windows®, Windows® 95 are registered trademarks of Microsoft Corporation.

i486™ is a trademark of Intel Corporation.

All other trademarks and registered trademarks are trademarks or registered trademarks of their respective holders.

The following frequency bands are used exclusively for cellular phone transmission. Reception of these bands is prohibited by the Federal Electronic Communications Privacy Act, as amended. The scanning receiver and the scanning receiver controller excludes these bands from its frequency range:

823.980 - 849.020 MHz

868.980 - 894.020 MHz

System requirements:

IBM PC/AT® compatible personal computer with CPU

i486™ or higher

Microsoft Windows® 95

Serial port (RS-232C)

CD-ROM drive

14 MB or more hard disk space

8 MB or more RAM

Before using this scanning receiver controller, read the Operating Instructions of the scanning receiver thoroughly.

Welcome!

Welcome to the world of PC controlled scanning reception. This software application controls the ICF-SC1PC scanning receiver from a PC. Here are some of the capabilities and features you will discover with the new scanning receiver controller.

- Control your scanning receiver ICF-SC1PC from a PC.
- Supports all major functions of the receiver:
 - Scanning options: Programmable Scanning, Memory Scanning, Service Scanning, and Intelligent Memory Scanning
 - Direct tuning, Preset tuning, Intelligent Memory tuning
 - Priority Scanning
 - SKIP function
 - Adjustable scan pause time
 - Adjustable frequency step and detection mode
- Expanded data handling capability:
 - 20 Programmable Scanning ranges
 - As many Memory preference files as you want (300 channels per file)
 - As many Skip preference files as you want (100 frequencies per file)
- Import/export capability – Read data from the receiver to save as a file. Write data of a file of your choice in the receiver (Programmable Scanning range data, Memory preference data, or the Skip preference data).
- Search frequencies using the supplied CD-ROM nationwide frequency database with over 3 million records. Preset the database search results in the preset memory and use them to scan or to tune. You can also save search results in a file.

Table of contents

Preparation

Connection	5
Installing the controller	6
To uninstall the controller	7
Starting up the controller	8
Quitting the controller	8
Overview of the main window	10
Command reference	12

Reception — Receiving in the Scanning Mode

Programmable Scanning	14
Default frequency range of the bands	14
Defining the programmable scanning frequency range	15
Running Programmable Scanning	17
Exporting Programmable Scanning data to the receiver	18
Memory Scanning	19
Presetting stations in the memory	19
Running Memory Scanning	21
Editing memory data	23
Other options in the Memory Scan Preferences-Data dialog	24
Saving Memory Preferences Data in files	25
Switching the active Memory Scan Preferences file	26
Importing memory data from the receiver	27
Exporting memory data to the receiver	27
Saving database search results	28
Service Scanning	29
Displaying Service Scanning frequency range	30
Intelligent Memory Scanning	31
Displaying Intelligent Memory frequency	32

Reception — Receiving in the Manual Mode

Direct tuning	33
Preset tuning	34
Intelligent Memory tuning	35
Priority Scanning	36
Specifying the priority frequency	36
Running Priority Scanning	37

Other useful functions

SKIP function	38
Designating the current reception a SKIP-frequency	38
Designating SKIP-frequencies in Preferences	38
Tuning in to a SKIP-frequency	39
Saving Skip Frequency Preferences in files	40
Deleting a SKIP-frequency	41
Switching the active Skip Frequency Preferences file	41
Other operation in the Skip Frequency Preferences dialog	42
Adjusting scan pause time	44
Switching DELAY on/off	44
Limiting scan pause time to 5 seconds	44
Adjusting Views	44
Selecting display patterns	44
Turning off the pointer guide	44

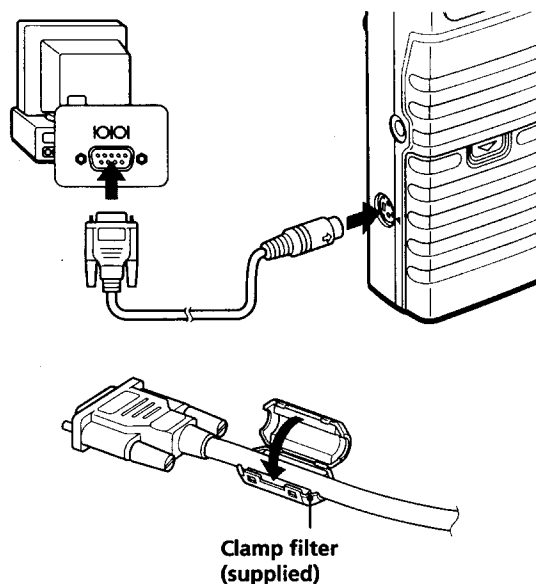
Additional information

Starting up the CD-ROM frequency database	45
Troubleshooting	46

►Preparation

Connection

Connect the ICF-SC1PC scanning receiver to the serial port (RS232C) of your PC using the supplied cable. Align the arrow on the cable plug to the ◀ mark on the receiver. Attach the supplied clamp filter near the end that connects to the PC, as shown in the illustration below.



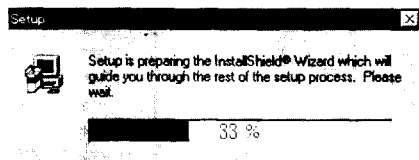
The scanning receiver can be used by itself even when it is connected to the PC with the serial cable as long as the controller is not started up.

Notes

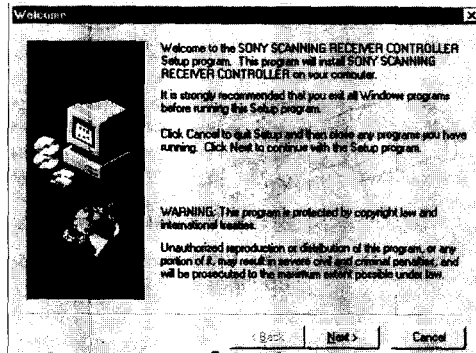
- When using the receiver connected to a PC, do not place the supplied cable near the receiver or the PC.
- Some signal noise may generate from the cable connected to external devices (mouse, printer, etc.), depending on the PC in use.
- If the serial cable is disconnected during the PC control mode, the power will turn off on the receiver.
- Keep the scanning receiver away from the PC when using the controller. Select a location with minimum noise interference from the PC.
- Do not lump the serial cable when using the controller.

Installing the controller

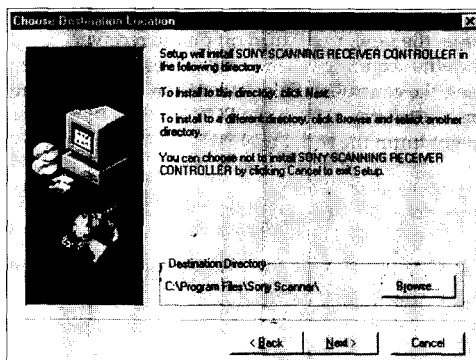
- 1 Insert the CD-ROM in the CD-ROM drive.
- 2 Select [RUN] from [Start].
- 3 Type in:
d:setup
and click [OK] or press [Enter] (when the CD-ROM drive is the D drive. Otherwise, change "d:" to the appropriate letter).
The installer program will start up...



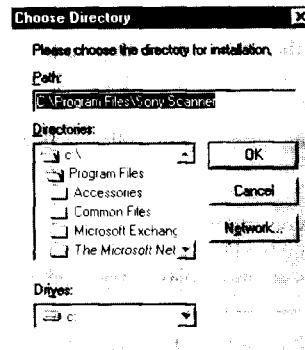
...and then the main window will appear.



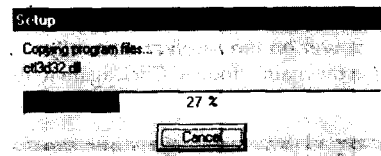
- 4 Click [Next].
- 5 The installer prompts you to choose the destination location.
By default, it is:
C:\Program Files\Sony Scanner\
To select the default location, click [Next] (go to step 7).
To select a different location, click [Browse].



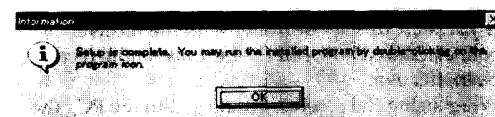
- 6 Choose the destination location and click [OK].



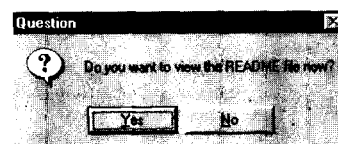
- 7 The installer starts to install the files.
The progress bar indicates the file copying process.



- 8 When file installation is complete, the following dialog will appear.
Click [OK].



- 9 The installer asks you if you will read the ReadMe file.
Click [Yes] to read the file.
Click [No] to skip reading the file.



To uninstall the controller

- 1 Select [Programs] from the [Start].menu.
- 2 Select [Uninstall] in [Sony Scanner].
- 3 Proceed as prompted by the dialog.

Starting up the controller

Connect the receiver to the PC before starting up (see "Connection", page 5).

- 1 Select [Programs] from the [Start] menu.
- 2 Select [Sony Scanning Receiver Controller] in [Sony Scanner].

The power will turn on automatically on the receiver. The receiver goes into the PC control mode, and "PC-cnt" will appear in the display of the receiver.



To turn off the power on the receiver manually

Click [POWER] in the main window. Click again to turn the power on again.

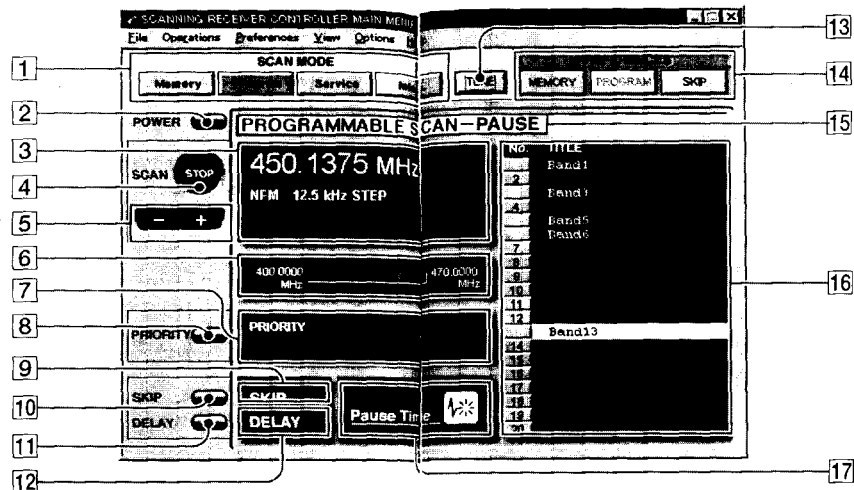
Quitting the controller

Select [Exit] from the [File] menu.

Notes

- If you start up the controller with the receiver connected to the PC, all the buttons on the receiver will be ineffective.
- When using the receiver connected to the PC, the backlight of the display window of the receiver will not light up even when using external power.

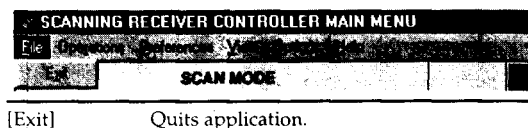
Overview of the main window



- 1 SCAN MODE buttons
Starts the respective modes of scanning.
- 2 POWER button
Turns the receiver on and off.
- 3 Frequency display
When running scan: "SCANNING" flashes and the detection mode is displayed.
At scan pause or in the Manual Mode: Frequency, detection mode, frequency step (Programmable Scanning only), preset channel number (Memory Scanning or Preset tuning) and the frequency title (if named) are displayed.
- 4 SCAN START/STOP button
During scanning: Click to stop scanning.
In the Manual Mode: Click to go into the Scanning Mode. The controller resumes the last performed mode of scanning.
- 5 +/- buttons
During scanning: Click to change scanning direction (+ in ascending order, - in descending order).
During scan pause: Click to resume scanning manually (+ in ascending order, - in descending order).
During Direct tuning: Click to change the frequency step by step.
During Preset tuning or Intelligent Memory tuning: Click to move to the next preset/memorized frequency.
- 6 Scanning indicator
Indicates the current scanning location in the scanning target band.
- 7 Priority frequency display
Displays the priority frequency and the detection mode when Priority Scanning is enabled.
- 8 PRIORITY button
Click to enable Priority Scanning. Click again to turn it off.
- 9 SKIP indicator
Lights up if the current frequency is a SKIP-frequency.
- 10 SKIP button
Click during scan pause or in the Manual Mode to designate the current frequency a SKIP-frequency. Click again to cancel SKIP designation.
- 11 DELAY button
Click to turn DELAY on and off (the 2-second delay mode).
- 12 DELAY indicator
Lights up when DELAY is turned on.
- 13 TUNE button
Click to enter the Manual Mode: Direct tuning, Preset tuning, or Intelligent Memory tuning.
- 14 PREFERENCES buttons
Opens the respective preferences dialogs.
MEMORY: Preset frequencies to the memory in the Memory Scan Preferences dialog.
PROGRAM: Specify frequency ranges in the Programmable Scan Preferences dialog.
SKIP: Specify SKIP-frequencies in the Skip Frequency Preferences dialog.
- 15 Mode indication
Displays the current reception mode.
For the scanning modes, displays whether scanning is running or at pause.
- 16 Scanning target display
Displays the respective targets during the scanning modes (programmable bands, memory preset pages, service bands).
The target titles are marked with a different color. The current scanning target is highlighted.
Displays the current preset page during Preset tuning.
- 17 Pause Time indicator
⏸ : lights up in the Until The Signal Stops (normal) mode.
⏸₅ : lights up in the 5 seconds (5-second pause) mode.

Command reference

File menu



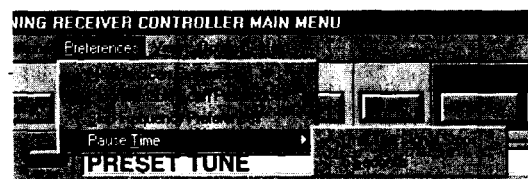
[Exit] Quits application.

Operations menu



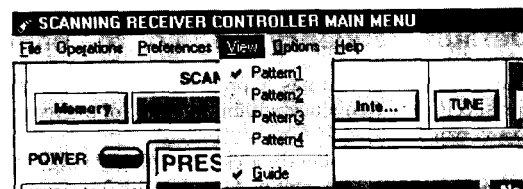
[Tune]...	
[Direct]	Goes into Direct tuning.
[Preset]	Goes into Preset tuning.
[Intelligent]	Goes into Intelligent Memory tuning.
[Scan]	Same as the SCAN START/STOP button (Ctrl + S).
[Minus]	Same as the - button (Ctrl + M).
[Plus]	Same as the + button (Ctrl + L).
[Priority]	Same as the PRIORITY button (Ctrl + R).
[Skip]	Same as the SKIP button (Ctrl + K).
[Delay]	Same as the DELAY button (Ctrl + D).
[Power]	Same as the POWER button (Ctrl + P).

Preferences menu



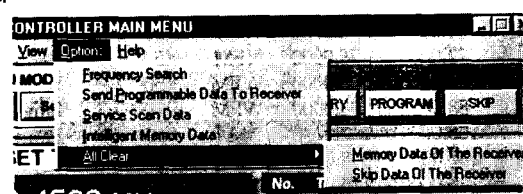
[Memory Scan Preferences]	Preset frequencies to the memory in the Memory Scan Preferences dialog.
[Programmable Scan Preferences]	Specify frequency ranges in the Programmable Scan Preferences dialog.
[Skip Frequency Preferences]	Specify SKIP-frequencies in the Skip Frequency Preferences dialog.
[Pause Time]...	
[Until The Signal Stops]	Scanning pauses as long as the signal is received and resumes automatically when the signal breaks.
[5 Seconds]	Scanning pauses for 5 seconds at reception and then resumes scanning automatically.

View menu



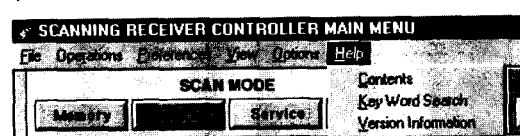
[Pattern 1 - 4]	Switches the display pattern of the main window.
[Guide]	Turns the pointer guide on/off.

Options menu



[Frequency Search]	Starts up the frequency database.
[Send Programmable Data to Receiver]	Exports data to the receiver.
[Service Scan Data]	Displays the service bands.
[Intelligent Memory Data]	Displays the contents of the Intelligent Memory of the receiver.
[All Clear]...	
[Memory Data Of The Receiver]	Clears all memory in the receiver.
[Skip Data Of The Receiver]	Clears all SKIP-frequency data in the receiver.

Help menu



[Contents]	Displays the table of contents of the Help information.
[Key Word Search]	Searches key words in the Help information.
[Version Information]	Displays the software version information of this controller.

► Reception — Receiving in the Scanning Mode

Programmable Scanning

Default frequency range of the bands

The receiver controller has 20 programmable bands. You can specify any frequency within the range of the receiver to any band.

By default, the controller divides its frequency range of 25 to 1300 MHz into 17 predefined bands, with 3 separate bands for the amateur radio frequencies;

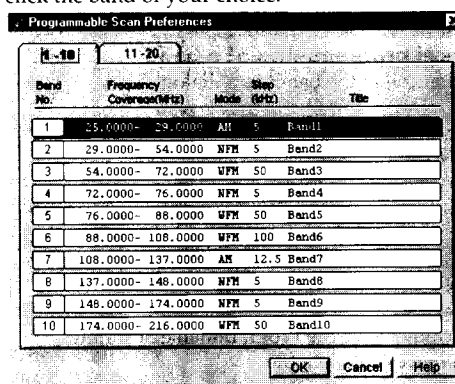
Band no.	Frequency range (MHz)	Detection mode	Frequency step (kHz)	Title
1	25.0000 - 29.0000	AM	5	Band 1
2	29.0000 - 54.0000	NFM	5	Band 2
3	54.0000 - 72.0000	WFM	50	Band 3
4	72.0000 - 76.0000	NFM	5	Band 4
5	76.0000 - 88.0000	WFM	50	Band 5
6	88.0000 - 108.0000	WFM	100	Band 6
7	108.0000 - 137.0000	AM	12.5	Band 7
8	137.0000 - 148.0000	NFM	5	Band 8
9	148.0000 - 174.0000	NFM	5	Band 9
10	174.0000 - 216.0000	WFM	50	Band 10
11	216.0000 - 225.0000	NFM	5	Band 11
12	225.0000 - 400.0000	AM	12.5	Band 12
13	400.0000 - 470.0000	NFM	12.5	Band 13
14	470.0000 - 512.0000	NFM	12.5	Band 14
15	512.0000 - 806.0000	WFM	50	Band 15
16	806.0000 - 1000.0000	NFM	12.5	Band 16
	(excluding cellular phone band)			
17	1000.0000 - 1300.0000	NFM	12.5	Band 17
18	50.0000 - 54.0000	NFM	5	Amateur _Band 1
19	144.0000 - 148.0000	NFM	5	Amateur _Band 2
20	420.0000 - 450.0000	NFM	5	Amateur _Band 3

Defining the programmable scanning frequency range

You can program the frequency range of each of the 20 bands.

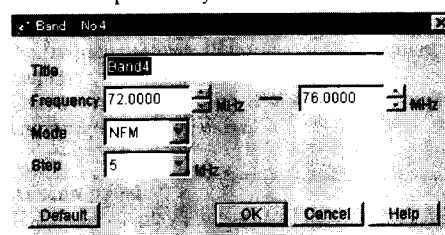
Define the range by specifying the lower and the upper limits of the range. You can also specify the frequency step and the detection mode.

- 1 Click [Scan Stop] in the main window if the receiver is running Programmable scan.
 - 2 Click [PROGRAM] under PREFERENCES in the main window (or select [Programmable Scan Preferences] from the [Preferences] menu).
- The Programmable Scan Preferences dialog will appear.
- 3 Click the tab that contains the band you wish to define (1-10: Bands 1 to 10, or 11-20: Bands 11 to 20), then click the band of your choice.



The band data dialog will appear.

- 4 Select the options to your choice and click [OK]:



Type in the title (optional).

Specify the upper and lower limit frequencies by typing the frequency digits, or by clicking ▲ or ▼*. Select a detection mode from the pull-down menu (NFM, WFM, or AM).

Select a frequency step from the pull-down menu (NFM or AM: 5, 10, 12.5, 25, 50, 100 kHz / WFM: 50 or 100 kHz).

The display will return to the Programmable Scan Preferences dialog.

- 5 Repeat steps 3 and 4 if you wish to define other bands.
- 6 Click [OK] on the Programmable Scan Preferences dialog.

Notes

- All settings are NOT saved until you click [OK] in the Programmable Scan Preferences dialog (step 6).
- You cannot change the Programmable Scanning preferences while running it.
- There are no restrictions on the letters/characters you can use for the title of the programmable range. The title of the band must be within 20 letters.
- If you have changed the detection mode to WFM when you are in AM or NFM with the frequency step set to 25 kHz or less, the frequency step will automatically change to 50 kHz. If the current frequency is not a step frequency, it will automatically change to a step frequency.

*You cannot use the ▲ or ▼ buttons to change the frequency value until you have typed in a valid frequency (within the range of 25 to 1300 MHz).

To cancel programming of a band

Click [Cancel] in the band data dialog.

To revert band ranges to default

Click [Default].

Notes

- Note that by clicking [Default], programming data of the band will be lost and returns to default setting (shown in "Default frequency range of the bands", page 14).
- You cannot save the Programmable Scanning preferences data in a file.

Running Programmable Scanning

- 1 Click [Program] under SCAN MODE in the main window.

- 2 Select one or more bands in the target display.

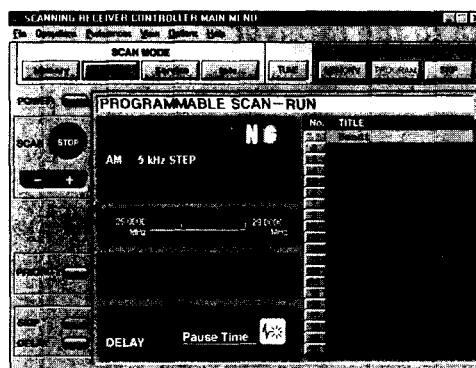
To include/exclude bands

Click the band number or the band title in the target display. Click a target band to exclude it from the scanning target. Click an excluded band to include it in the target.

- 3 Adjust the SQL control on the receiver.

Adjustment of the SQL (squelch) control is essential to all scanning procedures. Adjust it on the receiver (see "Adjusting the SQL control" in the Operating Instructions of the scanning receiver).

You cannot adjust the SQL control from the controller.



When scanning:

PROGRAMMABLE SCAN-RUN appears in the mode display.

The current target band will be highlighted in the scanning target display.

SCANNING will flash and the detection mode and the frequency step will appear in the frequency display.

The scanning indicator will display the progress of the scanning within the band.

At scan pause:

The mode display changes to PROGRAMMABLE SCAN-PAUSE.

The frequency display will show the frequency, detection mode and the frequency step.

The receiver resumes scanning automatically when the signal breaks off.

(For scan pause time options, see "Adjusting scan pause time", page 44).



If the last performed mode of scanning was Programmable Scanning, you can also run Programmable Scanning by clicking [SCAN START] in the Manual Mode.

Note

You cannot exclude a band if it is the only target band.

To start scanning again manually during scan pause

Click + or -.

Scanning will restart in ascending direction if you click +, and in descending direction if you click -.

To change scanning direction during scanning

Click + or -.

Scanning will change to the ascending direction if you click +, and to the descending direction if you click -.

To stop scanning

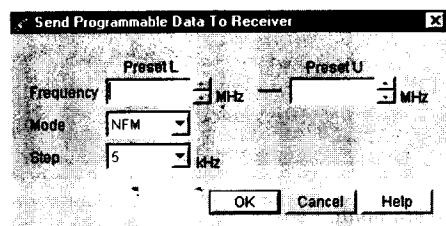
Click [SCAN STOP].

Scanning will stop at the present frequency.

Exporting Programmable Scanning data to the receiver

You can export Programmable Scanning data on the controller to the receiver. This will overwrite the present Preset L and Preset U frequencies in the receiver.

Note that once the data is overwritten in the receiver, you cannot retrieve the old data.



- 1 Select [Send Program Data To Receiver] from the [Options] menu.

The Send Program Data To Receiver dialog will appear.

- 2 Select the options to your choice and click [OK].
Type in the lower and upper limit frequencies.
Select a detection mode from the pull-down menu.
Select a frequency step from the pull-down menu.
- 3 Click [OK] in the export confirmation dialog.

Memory Scanning

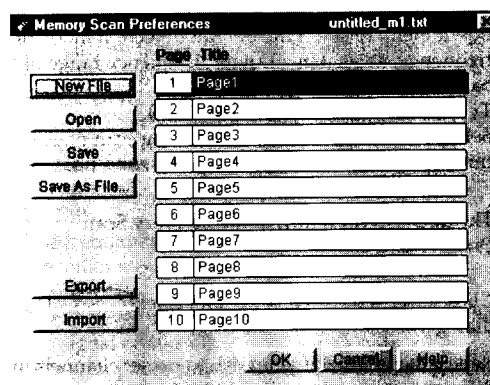
Presetting stations in the memory

Presetting is done in preset files. A preset file can hold up to 10 preset pages, each able to memorize 30 channels; thus a single memory preset file can hold a total of 300 channels.

When you store a frequency to a preset channel, you can specify the frequency step, detection mode, the DELAY setting and the name for each frequency as well.

- 1 Click [Scan Stop] in the main window if you are running Memory Scan.
- 2 Click [MEMORY] under PREFERENCES in the main window (or select [Memory Scan Preferences] from the [Preferences] menu).

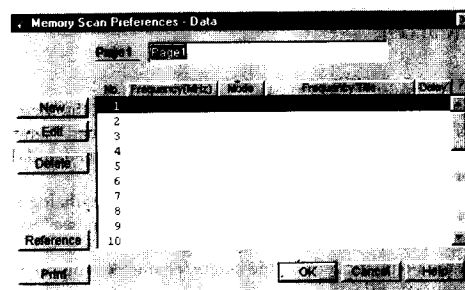
The Memory Scan Preferences dialog will appear, showing 10 pages.



- 3 Click the page of your choice.

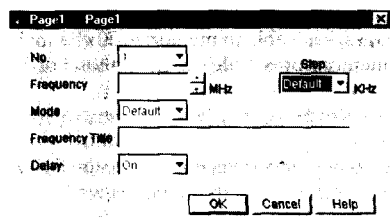
The Memory Scan Preferences-Data dialog will appear, containing 30 channels in the page.

Type in a page title if you wish to change the present title (up to 20 letters).



4 Click [NEW].

The new preset dialog will appear. The lowest vacant channel number in the page will be displayed.



5 Select the options to your choice and click [OK].

Select a preset number.

Select frequency step*. (Select [Default] from the pull-down menu to select the default frequency step of the frequency, as seen in "Default frequency range of the bands", page 14).

Type in the frequency, or select by clicking ▲ or ▼*.

Select detection mode. (Select [Default] from the pull-down menu to select the default detection mode of the frequency, as seen in "Default frequency range of the bands", page 14).

Type in the frequency title (optional).

Select DELAY setting (see "Adjusting scan pause time", page 44).

The display will return to the Memory Scan Preference-Data dialog.

6 Click [OK] in the Memory Scan Preferences-Data dialog.

7 Repeat steps 3 to 6 if you wish to preset channels in a different page.

8 Click [OK] in the Memory Scan Preferences dialog.

* The frequency step you have chosen here in the preset dialog only affects the step in which the frequency changes when you adjust it with ▲ or ▼, and is not saved as preference data.

To cancel presetting

Click [Cancel].

Notes

- All settings are NOT saved until you click [OK] in the Memory Scan Preferences dialog. If you exit the Memory Scan Preferences dialog by clicking [Cancel], the changes are not saved and the preferences will revert to the previous condition.
- Clicking [OK] to exit the Memory Scan Preferences dialog will not save the data as a file. To save the data as a file, see "Saving Memory Preferences Data in files", page 25.
- There are no restrictions on the letters/characters you can use for the frequency title.
- You cannot change the Memory Scanning Preferences while running it.

Running Memory Scanning

Memory Scanning scans the frequencies preset in the memory channels.

1 Click [Memory] under SCAN MODE in the main window.

2 Select the page(s) of your choice in the scanning target display.

To include/exclude pages

Click the page number or the page title in the target display. Click a target page to exclude it from the scanning target. Click an excluded page to include it in the target.

Pages without channel presets are not displayed.

3 Adjust the SQL control on the receiver.

(See "Adjusting the SQL control" in the Operating Instructions of the scanning receiver).

When scanning;

MEMORY SCAN-RUN appears in the mode display.

The current target page will be highlighted in the scanning target display.

SCANNING will flash in the frequency display.

At scan pause;

The mode display changes to MEMORY SCAN-PAUSE.

The frequency display will show the frequency, detection mode, preset channel number and the channel title.

The receiver resumes scanning automatically when the signal breaks off.

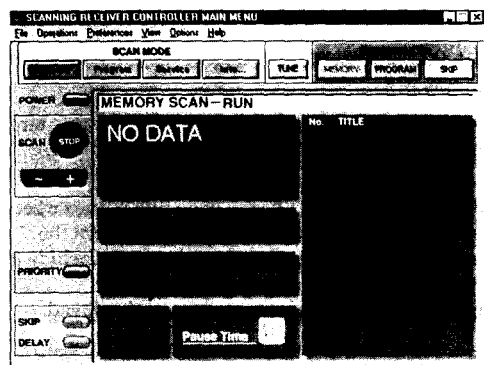
(For scan pause time options, see "Adjusting scan pause time", page 44).



If the last performed mode of scanning was Memory Scanning, you can also run Memory Scanning by clicking [SCAN START] in the Manual Mode.

Notes

- You cannot run Memory Scanning if there are no pages with channel presets.



- You cannot exclude a page if it is the only target page.

To start scanning again manually during scan pause

Click + or -.

Scanning will restart in ascending direction if you click +, and in descending direction if you click -.

To change scanning direction during scanning

Click + or -.

Scanning will change to the ascending direction if you click +, and to the descending direction if you click -.

To stop scanning

Click [SCAN STOP].

Scanning will stop at the present frequency.

Editing memory data

The preset memory data can be edited.

- 1 Click [Scan Stop] in the main window if the receiver is running Memory Scan.
 - 2 Click [MEMORY] under PREFERENCES (or select [Memory Scan Preferences] from the [Preferences] menu).
The Memory Scan Preferences dialog will appear.
 - 3 Click the page of your choice.
The Memory Scan Preferences-Data dialog will appear.
Type in a title if you wish to change the present title.
 - 4 Select the channel you wish to edit and click [EDIT].
The memory editing dialog will appear.
 - 5 Select the options to your choice and click [OK].
Select frequency step. (Select [Default] from the pull-down menu to select the default frequency step of the frequency, as seen in "Default frequency range of the bands", page 14).
Type in the frequency, or select by clicking ▲ or ▼.
Select detection mode. (Select [Default] from the pull-down menu to select the default detection mode of the frequency, as seen in "Default frequency range of the bands", page 14).
Type in the frequency title (optional).
Select DELAY setting (see "Adjusting scan pause time", page 44).
- The display will return to the Memory Scan Preferences-Data dialog.
- 6 Click [OK] in the Memory Scan Preferences-Data dialog.
 - 7 Repeat steps 3 to 6 if you wish to edit channels in a different page.
 - 8 Click [OK] in the Memory Scan Preferences dialog.

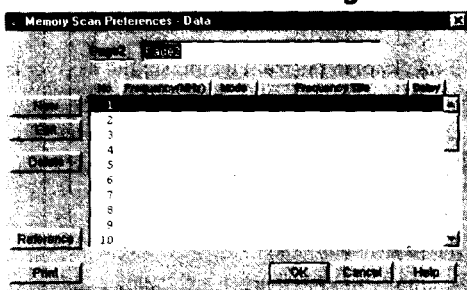
To cancel presetting

Click [Cancel].

Notes

- All settings are NOT saved until you click [OK] in the Memory Scan Preferences dialog. If you exit the Memory Scan Preferences dialog by clicking [Cancel], the changes are not saved and the preferences will revert to the previous condition.
- There are no restrictions on the letters/characters you can use for the frequency title.

Other options in the Memory Scan Preferences-Data dialog



Deleting channel presets

- 1 Select the preset channel you want to erase.
- 2 Click [Delete].

Printing the channel chart

- 1 Click [Print].
The Print dialog will appear.
- 2 Select the options to your choice and click [OK].

Arranging the chart according to frequency

Click [Frequency (MHz)].

The memory preset channels will be arranged according to frequency in ascending order. Click again to change to descending order.
The order of channels with the same frequency do not change.

Arranging the chart according to detection mode

Click [Mode].

The memory preset channels will be arranged in the order of AM → NFM → WFM. Click again to change to WFM → NFM → AM.
The order of channels with the same detection mode do not change.

Arranging the chart alphabetically

Click [Frequency Title].

The memory preset channels will be arranged alphabetically (channels without a title will come very first). Click again to change to the opposite order.
The order of channels with the same title do not change.

Arranging the chart according to DELAY setting

Click [Delay].

The memory preset channels with DELAY will come first. Click again to change to the opposite order.
The order of channels with the same DELAY setting do not change.

Note

All settings are NOT saved until you click [OK] in the Memory Scan Preferences dialog. If you exit the Memory Scan Preferences dialog by clicking [Cancel], the changes are not saved and the preferences will revert to the previous condition.

Saving Memory Preferences Data in files

The memory preferences can further be saved as files (up to 300 channels per file).

The controller runs Memory Scanning on a single memory preferences file at a time. Store memory data in files and switch the active preferences file.

Saving a file

Click [Save] in the Memory Scan Preferences dialog.

The active memory preferences file will be overwritten. If there is no active file, the Save As dialog will appear.

Name the file, select the "Memory" folder and click [Save].

The extension ".txt" will be added automatically to the file name.

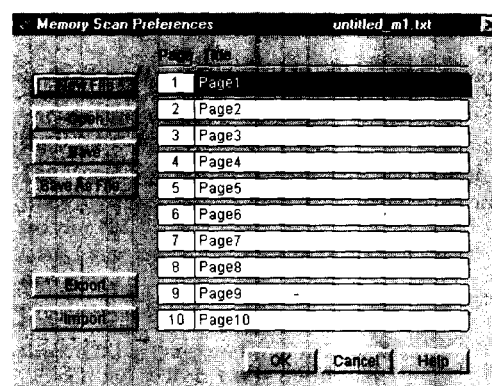
Data for all 10 pages are saved in the single file.

Creating a new file

Click [New File] in the Memory Scan Preferences dialog.

If the current preferences have been changed, the controller asks you if you want to save it before creating a new file. If you do, click [Yes].
If the current preferences have not been changed, the controller opens a new file.

After the current preferences are saved, the Memory Scanning Preferences dialog changes to a new, untitled file.



Editing existing files

- 1 Click [Open] in the Memory Scan Preferences dialog.
If the current preferences have been changed, the controller asks you if you want to save it before opening an existing file. If you do, click [Yes].
The Open dialog will appear.
- 2 Select the file you want to edit and click [Open].
The Memory Scanning Preferences dialog changes to the file you have chosen.

Saving the edited file as a different file

- Click [Save As File...] in the Memory Scan Preferences dialog.
The Save As dialog will appear.
Name the file, select the "Memory" folder and click [Save].

Note

Save all Memory Scan Preferences files in the "Memory" folder.
Do not delete or move the folder or change its name.

Switching the active Memory Scan Preferences file

- 1 Click [Open] in the Memory Scan Preferences dialog.
If the current preferences have been changed, the controller asks you if you want to save it before opening an existing file. If you do, click [Yes].
The Open dialog will appear.
- 2 Select the file to be used as the active Memory Scan Preferences file and click [Open].
The Memory Scan Preferences dialog changes to the file you have chosen.
- 3 Click [OK] to close the Memory Scan Preferences dialog.

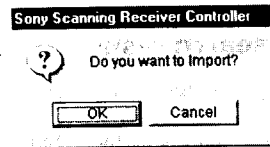
Note

If you click [Cancel] to close the dialog, the active preference file remains unchanged.

Importing memory data from the receiver

You can import the Memory Preferences data from the receiver.

- 1 Click [MEMORY] under PREFERENCES in the main window (or select [Memory Scan Preferences] in the [Preferences] menu).
The Memory Scan Preferences dialog will appear.
- 2 Click [Import].
- 3 Click [OK] in the import confirmation dialog.



If the current preferences have been changed, the controller asks you if you want to save the current preferences. Click [Yes] to save the changes.
"Importing" will appear in the display.

- 4 To use the imported data as the active preference data, click [OK] to close Memory Scan Preferences dialog.
To keep the active preference data unchanged (i.e., revert to the condition before you opened the Memory Scan Preferences dialog), click [Cancel] to close the dialog.

Exporting memory data to the receiver

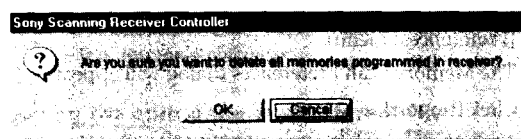
You can select a Memory Preferences file and export its data to the receiver. Note that once the data is overwritten in the receiver, you cannot retrieve the old data.

- 1 Click [MEMORY] under PREFERENCES in the main window (or select [Memory Scan Preferences] from the [Preferences] menu).
The Memory Scan Preferences dialog will appear.
- 2 Click [Open] and select a file if you want to export an existing file.
Click [New File] if you want to create and export a new file.
- 3 Click [Export].
- 4 Click [OK] in the export confirmation dialog.
"Exporting" will appear in the display.
- 5 Click [Cancel] to close the Memory Scan Preferences dialog.
To use the exported data as the active preference data, click [OK] to close the dialog.

Erasing all memory data on the receiver

Note that the erased memory data of the receiver cannot be retrieved. Make sure of the data you are erasing.

- 1 Select [Memory Data Of The Receiver] under [All Clear] from the [Options] menu.
- 2 Click [OK] in the erase confirmation dialog.



Saving database search results

You can save the search results of the CD-ROM frequency database software as a file.

To start up the database, see "Starting up the CD-ROM frequency database", page 45.

For operation of the database software, see [Help] in the database software.

- 1 Search in the frequency database.
- 2 Name the search result.
By default, the file will be named Output.dbf. The extension ".dbf" will be added automatically. Save it in the "Reference" folder in the "Sony Scanner" folder.
- 3 Click [MEMORY] under PREFERENCES in the main window (or select [Memory Scan Preferences] in the [Preferences] menu).
The Memory Scan Preferences dialog will appear. Click the page you wish to save the search results. The Memory Scan Preferences-Data dialog will appear.
- 4 Click [Reference].
The Open dialog will appear.
- 5 Select the reference file you have just saved and click [Open]. The References dialog will appear.
- 6 Click the channel number you want to store and click [OK].
You can choose one or more channels.

Notes

- The selected data is written in the vacant preset channel of the page. You cannot save the search results if you have chosen more channels than the vacant preset channels.
- Detection mode for the saved data will be the default, and DELAY will be on.
- You can only save search results within the range of this controller (25 - 1300 MHz, excluding the cellular phone band).
- Do not delete or move the "Reference" folder or change its name.

Service Scanning

Service Scanning scans one or more of the 9 pre-programmed Public Service Bands of your choice.

The pre-programmed Public Service Bands are as follows:

Program no.	Service Band
1	NOAA Weather broadcast
2	Police
3	Fire and Emergency
4	Marine
5	Aircraft (VHF)
6	Aircraft (UHF)
7	FM broadcast
8	TV audio (VHF)
9	TV audio (UHF)

- 1 Click [Service] under SCAN MODE in the main window.
The service bands will appear in the target display.
- 2 Click the service band of your choice in the target display.

To include/exclude service bands

Click the service band number or the service band title in the target display.
Click a target band to exclude it from the scanning target. Click an excluded band to include it in the target.

- 3 Adjust the SQL control on the receiver.
(see "Adjusting the SQL control" in the Operating Instructions of the scanning receiver).

When scanning;

SERVICE SCAN-RUN appears in the mode display. The current target service band will be highlighted in the scanning target display. SCANNING will flash and the detection mode will appear in the frequency display. The scanning indicator will display the progress of the scanning within the service band.

At scan pause;

The mode display changes to SERVICE SCAN-PAUSE.

The frequency display will show the frequency and the detection mode.

The receiver resumes scanning automatically when the signal breaks off.

(For scan pause time options, see "Adjusting scan pause time", page 44).



If the last performed mode of scanning was Service Scanning, you can also run Service Scanning by clicking [SCAN START] in the Manual Mode.

Note

You cannot exclude a service band if it is the only target band.

To start scanning again manually during scan pause

Click + or –.

Scanning will restart in ascending direction if you click +, and in descending direction if you click –.

To change scanning direction during scanning

Click + or –.

Scanning will change to the ascending direction if you click +, and to the descending direction if you click –.

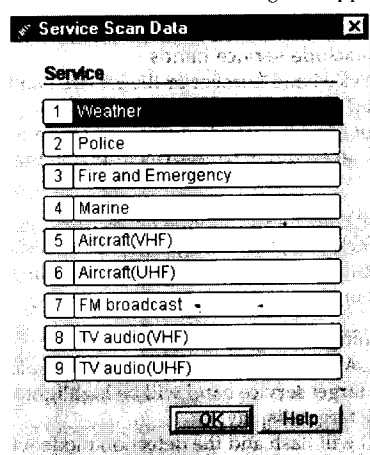
To stop scanning

Click [SCAN STOP].

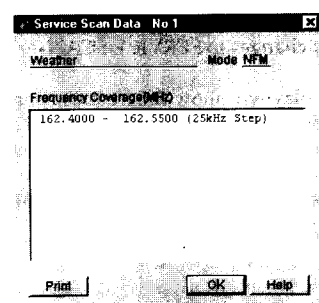
Scanning will stop at the present frequency.

Displaying Service Scanning frequency range

- 1 Select [Service Scan Data] from the [Options] menu. The Service Scan Data dialog will appear.



- 2 Click the Service band of your choice. A dialog will show the frequency range of the service bands.



To print

Click [Print].

Intelligent Memory Scanning

When the receiver receives a station continuously for 5 seconds or longer, the frequency is memorized automatically in the Intelligent Memory. The Intelligent Memory holds the 10 most recent reception frequencies. Intelligent Memory Scanning scans the frequencies in the Intelligent Memory of the receiver.

- 1 Click [Inte...] under SCAN MODE in the main window.
- 2 Adjust the SQL control on the receiver. (see "Adjusting the SQL control" in the Operating Instructions of the scanning receiver).

When scanning;

INTELLIGENT MEMORY SCAN-RUN appears in the mode display. SCANNING will flash in the frequency display.

At scan pause;

The mode display changes to INTELLIGENT MEMORY SCAN-PAUSE.

The frequency display will show the frequency, the detection mode, and the Intelligent Memory number. The receiver resumes scanning automatically when the signal breaks off.

(For scan pause time options, see "Adjusting scan pause time", page 44).



If the last performed mode of scanning was Intelligent Memory Scanning, you can also run Intelligent Memory Scanning by clicking [SCAN START] in the Manual Mode.

To start scanning again manually during scan pause

Click + or –.

Scanning will restart in ascending direction if you click +, and in descending direction if you click –.

To change scanning direction during scanning

Click + or –.

Scanning will change to the ascending direction if you click +, and to the descending direction if you click –.

To stop scanning

Click [SCAN STOP].

Scanning will stop at the present frequency.

Note

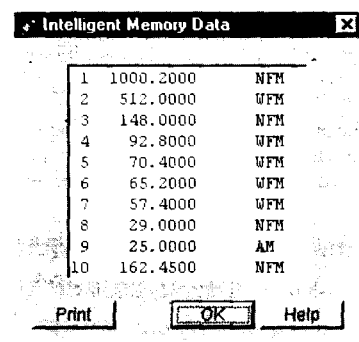
Intelligent Memory holds the 10 most recent reception frequencies. The oldest one will be erased as there is new reception. Store the frequency in the memory if you need to store it.

Displaying Intelligent Memory frequency

Click [SCAN STOP] in the main window if you are running scan.

Select [Intelligent Memory Data] from the [Options] menu.

The Intelligent Memory Data dialog will display the 10 recent reception frequencies.



To Print

Click [Print].

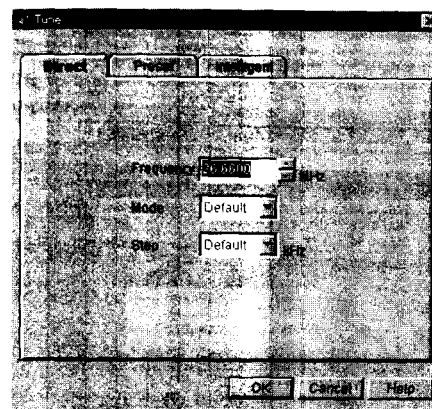
► Reception — Receiving in the Manual Mode

Direct tuning

You can tune by directly inputting the frequency digits (Direct tuning), or by adjusting the frequency step by step by clicking ▲ or ▼*.

- 1 Click [Tune] in the main window.

The Tune dialog will appear.



- 2 Click the [Direct] tab.

- 3 Select the options to your choice and click [OK].

Select frequency step. (Select [Default] from the pull-down menu to select the default frequency step of the frequency, as seen in "Default frequency range of the bands", page 14).

Type in the frequency, or select by clicking ▲ or ▼*.

Select detection mode. (Select [Default] from the pull-down menu to select the default detection mode of the frequency, as seen in "Default frequency range of the bands", page 14).

The mode display will show DIRECT TUNE.

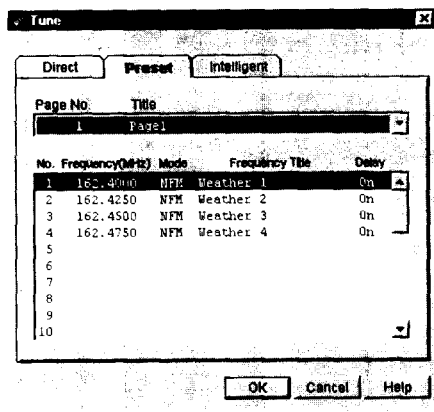
The frequency display will display the frequency, detection mode and frequency step.

* You cannot use the ▲ or ▼ buttons to change the frequency value until you have typed in a valid frequency first (within a range of 25 to 1300 MHz).

Preset tuning

Preset tuning recalls a frequency stored in memory (see page 19).

- 1 Click [Tune] in the main window.
The Tune dialog will appear.
- 2 Click the [Preset] tab.

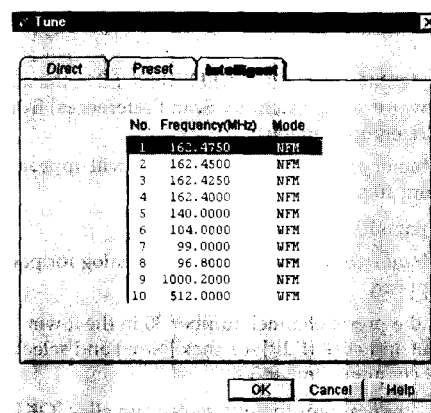


- 3 Select the page from the pull-down menu in the upper column.
The lower column will display the channels in the selected page.
- 4 Select the channel from the chart and click [OK].
The mode display will show PRESET TUNE.
The frequency display will display the frequency, detection mode, preset channel number and the frequency title (if named). The page number will be displayed on the target indication.

Intelligent Memory tuning

Intelligent Memory tuning recalls a frequency stored in the Intelligent Memory of the receiver (see page 31).

- 1 Click [SCAN STOP] in the main window if the receiver is running scan.
- 2 Click [Tune] in the main window.
The Tune dialog will appear.
- 3 Click the [Intelligent] tab.
The frequencies for the 10 recent reception will appear.



- 4 Select a frequency from the chart and click [OK].
The mode display will show INTELLIGENT MEMORY TUNE.
The frequency display will display the frequency, the detection mode, and the Intelligent Memory number.

Note

You cannot recall a station in the Intelligent Memory when running scan.

Priority Scanning

Priority Scanning checks the priority channel every 5 seconds and switches to this channel if there is reception. If reception is broken, the receiver will return to the previous condition.

You can run Priority Scanning during any scanning or tuning modes.

Specifying the priority frequency

Specify a priority frequency of your choice to preset channel 30 on page 10 (the priority channel). The procedure is the same as presetting other frequencies to memory, but you cannot use any other channel for this purpose.

- 1 Click [MEMORY] under PREFERENCES in the main window (or select [Memory Scan Preferences] from the [Preferences] menu).
The Memory Scan Preferences dialog will appear, showing 10 pages.
- 2 Click page 10.
The Memory Scan Preferences-Data dialog for page 10 will appear.
- 3 Select the preset channel number 30 in the lower column and click [Edit] (or click [New] and select preset channel number 30).
- 4 Select other options to your choice and click [OK].
Select frequency step*. (Select [Default] from the pull-down menu to select the default frequency step of the frequency; as seen in "Default frequency range of the bands", page 14).
Type in the frequency, or select by clicking ▲ or ▼*.
Select detection mode. (Select [Default] from the pull-down menu to select the default detection mode of the frequency, as seen in "Default frequency range of the bands", page 14).
Type in the frequency title (optional).
Select DELAY setting (see "Adjusting scan pause time", page 44).
- 5 Click [OK] in the Memory Scan Preferences dialog.

* The frequency step you have chosen here in the preset dialog only affects the step in which the frequency changes when you adjust it with ▲ or ▼, and is not saved as preference data.

To cancel presetting priority frequency

Click [Cancel].

Notes

- The priority frequency is NOT saved until you click [OK] in the Memory Scan Preferences dialog. If you exit the Memory Scan Preferences dialog by clicking [Cancel], the priority frequency will revert to the one last saved.
- There are no restrictions on the letters/characters you can use for the frequency title.

- You cannot change the Memory Scanning Preferences while running it.

Running Priority Scanning

Click [PRIORITY] in the main window.

PRIORITY, the priority frequency, and the mode indication will appear in the priority frequency display.

When the receiver receives the priority frequency, the mode indication and the priority frequency display will be highlighted.

Click [PRIORITY] again to cancel Priority Scanning.

► Other useful functions

SKIP function

You can designate up to 100 frequencies as SKIP-frequencies. The receiver will skip these frequencies during scanning. Designate unwanted frequencies such as interference signals.

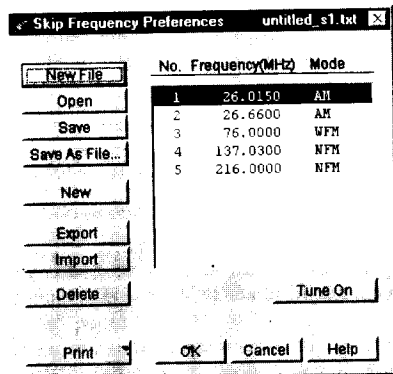
Designating the current reception a SKIP-frequency

Click [SKIP] (in the lower left) during reception (i.e., scanning pause or in the Manual Mode).
In the Manual Mode, click [SKIP] again to cancel SKIP designation.

Designating SKIP-frequencies in Preferences

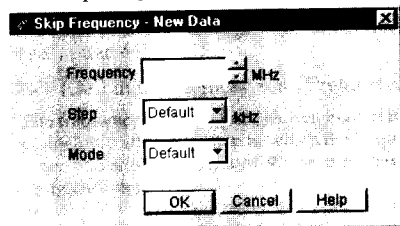
- 1 Click [SKIP] under PREFERENCES in the main window (or select [Skip Frequency Preferences] from the [Preferences] menu).

The Skip Frequency Preferences dialog will appear.



- 2 Click [NEW].

The Skip Frequency-New Data dialog will appear.



- 3 Select the options to your choice and click [OK].

Select frequency step*. (Select [Default] from the pull-down menu to select the default frequency step of the frequency, as seen in "Default frequency range of the bands", page 14).

Type in the frequency, or select by clicking ▲ or ▼*.
Select detection mode. (Select [Default] from the pull-down menu to select the default detection mode of the frequency, as seen in "Default frequency range of the bands", page 14).

- 4 Repeat steps 2 and 3 if you wish to designate other SKIP-frequencies.

- 5 Click [OK] in the Skip Frequency Preferences dialog.

* The frequency step you have chosen here in the preset dialog only affects the step in which the frequency changes when you adjust it with ▲ or ▼, and is not saved as preference data.

To cancel SKIP-frequency designation

Click [Cancel].

Notes

- All settings are NOT saved until you click [OK] in the Skip Frequency Preferences dialog. If you exit the Skip Frequency Preferences dialog by clicking [Cancel], the changes are not saved and the preferences will revert to the previous condition.
- One SKIP-designation for a frequency is effective in any mode of scanning, for any detection mode.

Tuning in to a SKIP-frequency

You can select a SKIP-frequency and tune in to it.

- 1 Click [SKIP] under PREFERENCES in the main window (or select [Skip Frequency Preferences] from the [Preferences] menu).

The Skip Frequency Preferences dialog appears.

- 2 Click the frequency you want to tune in to.
- 3 Click [Tune On].

To cancel reception

Click [Tune Off].

Note

You cannot select a different SKIP-frequency while tuning in. Click [Tune Off] first to tune out of the present SKIP-frequency.

Saving Skip Frequency Preferences in files

You can save SKIP frequency preferences in files. The controller runs the SKIP function on a single SKIP-frequency data file at a time. Store SKIP-frequency data in files and switch the active SKIP-frequency file.

Saving a file

Click [Save] in the Skip Frequency Preferences dialog.

The active SKIP-frequency file will be overwritten. If there is no active file, the Save As dialog will appear. Name the file, select the "Skip" folder and click [Save] in the Skip Frequency Preferences dialog.

The extension ".txt" will be added automatically to the file name.

Creating a new SKIP data file

Click [New File] in the Skip Frequency Preferences dialog.

If the current preferences have been changed, the controller asks you if you want to save the changes to the current preferences before creating a new file.

If you do, click [Yes].

The Skip Frequency Preferences dialog changes to a new untitled file.

Editing existing SKIP data files

- 1 Click [Open] in the Skip Frequency Preferences dialog.

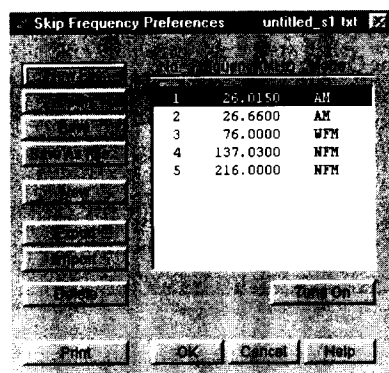
If the current preferences have been changed, the controller asks you if you want to save changes to the current preferences before opening an existing file.

If you do, click [Yes].

The Open dialog will appear.

- 2 Select the file you want to edit and click [Open].

The Skip Frequency Preferences dialog changes to the file you have chosen.



Saving the edited file as a different file

Click [Save As File...] in the Skip Frequency Preferences dialog. The Save As dialog will appear. Name the file, select the "Skip" folder and click [Save].

Note

Save all Skip Frequency Preferences files in the "Skip" folder. Do not delete or move the folder or change its name.

Deleting a SKIP-frequency

- 1 Select the frequency you want to delete in the Skip Frequency Preferences dialog.

- 2 Click [Delete].

To cancel deleting, click [Cancel].

Switching the active Skip Frequency Preferences file

- 1 Click [Open] in the Skip Frequency Preferences dialog.

If the current preferences have been changed, the controller asks you if you want to save changes to the current preferences before opening an existing file.

If you do, click [Yes].

The Open dialog will appear.

- 2 Select the file to be used as the active Skip Frequency Preferences file and click [Open].

The Skip Frequency Preferences dialog changes to the file you have chosen.

- 3 Click [OK] to close the Skip Frequency Preferences dialog.

Note

If you click [Cancel] to close the dialog, the active preference file remains unchanged.

Other operation in the Skip Frequency Preferences dialog

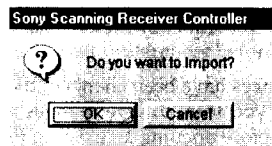
Printing the SKIP-frequency chart

- 1 Click [Print].
The Print dialog will appear.
- 2 Select the options to your choice and click [OK].

Importing SKIP data from the receiver

You can import SKIP data from the receiver.

- 1 Click [SKIP] under PREFERENCES in the main dialog (or select [Skip Frequency Preferences] from the [Preferences] menu).
The Skip Frequency Preferences dialog will appear.
- 2 Click [Import].
- 3 Click [OK] in the import confirmation dialog.



If the current preferences have been changed, the controller asks you if you want to save the current preferences. Click [Yes] to save the changes.

"Importing" will appear in the display.

- 4 To use the imported data as the active SKIP data, click [OK] to close the Skip Frequency Preferences dialog. To keep the active preference data unchanged (i.e., revert to the condition before you opened the Skip Frequency Preferences dialog), click [Cancel] to close the dialog.

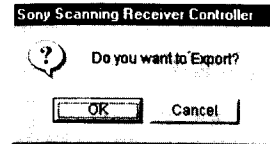
Exporting SKIP data to the receiver

You can select a Skip Frequency file and export its data to the receiver.

Note that the original SKIP data on the receiver will be overwritten and cannot be retrieved.

- 1 Click [SKIP] under PREFERENCES in the main window (or select [Skip Frequency Preferences] from the [Preferences] menu).
The Skip Frequency Preferences dialog will appear.
- 2 Click [Open] and select a file if you want to export an existing file.
Click [New File] if you want to create and export a new file.
- 3 Click [Export].

- 4 Click [OK] in the export confirmation dialog.



"Exporting" will appear in the display.

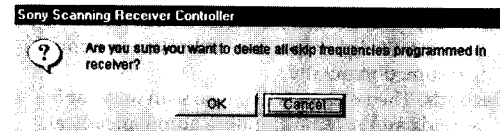
- 5 Click [Cancel] to close the Memory Scan Preferences dialog.

To use the exported data as the active SKIP preference data, click [OK] to close the dialog.

Erasing all SKIP data on the receiver

Note that the erased SKIP data cannot be retrieved. Be sure of the data you are erasing.

- 1 Select [Skip Data Of The Receiver] under [All Clear] from the [Options] menu.
- 2 Click [OK] in the erase confirmation dialog.



Adjusting scan pause time

Switching DELAY on/off

By default, DELAY is turned on.
Click [DELAY] in the main window to turn off DELAY.
The DELAY indication will disappear.
Click [DELAY] again to turn it on again.

DELAY off: The receiver resumes scanning the moment signal reception is broken during scan pause.

DELAY on: The receiver does not resume scanning until there is a signal break of 2 seconds.

Limiting scan pause time to 5 seconds

Check either [Until The Signal Stops] or [5 Seconds] under [Pause Time] from the [Preferences] menu. By default, scan pause is set to "Until The Signal Stops".

Until The Signal Stops: The receiver will remain in scan pause until signal reception is broken or scanning is resumed manually.

5 Seconds: The receiver will pause scan only for 5 seconds and resume scanning automatically at every stop.

Adjusting Views

Selecting display patterns

Choose from 4 display patterns with different colors.
Check a pattern from Pattern 1 - 4 from the [Views] menu.

Turning off the pointer guide

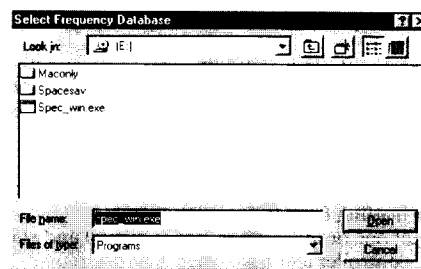
The pointer guide explains the function of the buttons when the mouse pointer is moved to point a button.
The pointer guide is turned on by default.
Uncheck [Guide] in the [Views] menu. Check it again to turn it on.

►Additional information

Starting up the CD-ROM frequency database

The database holds information for over 3 million station frequencies nationwide.

- 1 Insert the supplied CD-ROM in the CD-ROM drive.
- 2 Select [Frequency Search] from the [Options] menu.
- 3 The dialog prompts you to "Select Frequency Database".
Select the drive number of the CD-ROM drive from the "look in:" pull-down menu.
Select the file name; spec_win.exe
- 4 Click [Open].



From the second time, just insert the CD-ROM in the CD-ROM drive and select [Frequency Search] from the [Options] menu.

You can tune the receiver using the database

For instructions on using the frequency database, refer to [Help] on the database software.

You can also save the search results of the database in a file on the PC (see "Saving database search results", page 28).

Troubleshooting

Cannot operate the receiver from the controller.

- The receiver is not securely connected with the PC.
→ Check connection and connect securely.
- The COM port is not assigned to the serial port.
→ Check COM port setup (Double click System in the Control Panel. Click the Device Manager tab and confirm the properties for the COM port).

The controller quits unexpectedly.

- If you are using Windows 95 version 4.00.950, the controller may quit during long continuous scanning operation with the following messages, due to a software bug of this version of Windows 95;
"Out of storing space"
"Out of memory"
→ Start up the controller again. If this continues to be a problem, update Windows 95.

Cannot start up the controller.

- Your PC may show the following messages and the controller may not start up when there is insufficient available memory;
"Out of memory"
"Invalid picture"
"Error loading from file"
→ Quit one or more other application(s) and start up the controller again.

If you are experiencing difficulty with the set-up or operation of your Sony ICF-SC1PC Controller or the frequency database, you may contact Sony for technical support as follows:

Technical Support for the ICF-SC1PC:

1-888-633-SONY (7669)

or

<http://www.sony.com/radioscanner>

