

SONY

2-059-371-12(1)

KDF-42/50 WE655

KDF-55/60 WF655

KDF-55/60 XS955

Quick Setup Guide

Do not throw away this guide, and keep it handy for future reference.
For further information, see the operating instructions supplied with the TV.

Please follow the steps to setup your TV:

1

Checking the Supplied Accessories

2

Connecting Your TV
(See reverse side)

3

Running Initial Setup

4

Programming the Remote Control

If your product is not working properly
DO NOT RETURN TO THE STORE.
For service and technical assistance
Call our Customer Information Service Center (Toll Free):
1-800-222-SONY (7669) for US residents.
1-877-899-SONY (7669) for Canadian residents.

Sony Corporation © 2004 Printed in U.S.A.

Making Video Connections

Your TV includes several types of video inputs. Use the inputs that are available on your components that provide the best video performance, as described in right.

Best Video Performance

Connector type

HDMI
(High-Definition Multimedia Interface)

Component video

S VIDEO

Composite video

RF/Coaxial

Additional Connections

For best audio performance, connect your digital audio components using either digital optical or digital coaxial audio connections. Depending on which components are in your system, you may need to complete additional connections. For example, if you have a satellite receiver, you'll need to connect the satellite antenna. If you have an A/V receiver, you'll need to connect speakers.

The connection diagrams shown in the reverse side are recommendations only; other possible solutions may exist. Connections that include an A/V receiver can often be very complex, so check your A/V receiver's instruction manual for additional details.

Activating CableCARD™ Service

Before you can use CableCARD service, you need to insert the CableCARD (supplied by your cable provider) and activate the service, as described in right.

Inserting the CableCARD incorrectly may result in permanent damage to the card and the TV.

4 Programming the Remote Control

The remote control is preset to operate Sony brand video equipment.

Sony Equipment	Programmable Code Number
DVD/VCR	601 (Sony Dream System)
SAT/Cable	801 (Sony Satellite Receiver)

If you have video equipment other than Sony brand that you want to control with the LCD projection TV's remote control, use the following procedures to program the remote control.

The equipment must have infrared (IR) remote capability in order to be used with this remote control.

Using the code list below, find the three-digit code number for the manufacturer of your equipment. (If more than one code number is listed, use the number listed first.)

5

3

4

1, 2

1

1 Press the DVD/VCR (FUNCTION) and RESET buttons simultaneously, or press the SAT/CABLE (FUNCTION) and RESET buttons simultaneously. DVD/VCR and SAT/CABLE buttons flash.

2 Press the function button you want to program.
To program a cable box or a satellite receiver
Press SAT/CABLE (FUNCTION).
To program video equipment
Press DVD/VCR (FUNCTION).

3 Enter the three-digit manufacturer's code number using the 0-9 buttons.

4 Press ENT (enter).

5 To check if the code number works, aim the TV's remote control at the equipment and press DVD/VCR and/or SAT/CABLE (POWER) that corresponds with that equipment. If it responds, the programming is completed. If not, try using the other codes listed for that manufacturer.

The equipment must have infrared (IR) remote capability in order to be used with this remote control.

If more than one code number is listed, try entering them one by one until you come to the correct code for your equipment.

If you enter a new code number, the code number you previously entered at that setting is erased.

In some cases, you may not be able to operate your equipment with the supplied remote control. In such cases, use the equipment's own remote control unit.

1 Checking the Supplied Accessories

Along with your new LCD projection TV, the packing box contains a remote control and two AA (R6) batteries. These items are all you need to set up and use the TV.

2 Connecting Your TV

Review the following chart to determine which diagram to use to connect the components in your system:

For these components	See reverse side
<div>Cable/Antenna</div> <div>Cable Box OR Satellite Receiver</div> <div>VCR</div> <div>Sony Dream System</div>	A
<div>Cable/Antenna</div> <div>Cable Box OR Satellite Receiver</div> <div>VCR</div> <div>DVD Player</div>	B
<div>Cable/Antenna</div> <div>Cable Box OR Satellite Receiver</div> <div>VCR</div> <div>DVD Player</div> <div>AV Receiver</div>	C
<div>Cable/Antenna</div> <div>Cable Box</div> <div>VCR</div> <div>DVD Player</div> <div>Satellite Receiver</div>	D
<div>Cable/Antenna</div> <div>Cable Box OR Satellite Receiver</div> <div>VCR</div> <div>DVD Player</div> <div>AV Receiver</div> <div>Digital Recorder</div>	E
<div>Cable/Antenna</div> <div>HD Cable Box</div> <div>VCR</div> <div>DVD Player</div>	F

See the “Cables Required” chart that appears with the diagram to determine which cables you'll need. You may need to purchase extra accessories, such as cables and splitters, depending on the components you plan to connect.

Turn off and unplug all components before making connections.

If you are connecting a digital cable box, you'll need a special bi-directional splitter that's compatible with your cable box. Contact your cable provider for details.

3 Running Initial Setup

1 Press POWER to turn on the TV. The Initial Setup screen appears.

2 Press to select the on-screen display language. Then press . The message “Start auto program now?” appears.

3 Press to select “Yes”, then press only.

Initial Setup automatically creates a list of receivable channels. When finished, the lowest numbered channel is displayed.

If you need to perform Auto Program again

1 Press MENU.

2 Press to select (Channel), then press .

3 Press to select “Auto Program,” then press .

4 Press .

“Auto Program” appears and the TV starts scanning and presetting channels automatically. When all the receivable channels are stored, the “Show/Hide Channels” menu appears. Using this menu, you can start skipping unwanted channels (see “Selecting Channel Options” in the operating instructions).

5 Press MENU to exit the menu screen.

The Auto Program may take up to 50 minutes to complete. A progress bar will display the approximate progress of the Auto Program and Digital Channels/Add sequences.

Manufacturer's codes

Manufacturer	Code
DVD Players	
Sony	751
General Electric	755
Hitachi	758
JVC	756
Magnavox	757
Mitsubishi	761
Panasonic	753
Philips	757
Pioneer	752
RCA/PROSCAN	755
Samsung	758
Toshiba	754
Zenith	760
DVD Changers	
Manufacturer	Code
Sony	765
Panasonic	766
DVD/VCR Combo Units	
Manufacturer	Code
Sony	767
Broksonic	776
JVC	775
Panasonic	777
Samsung	774
Toshiba	773
Zenith	768
HDD/DVD Combo Units	
Manufacturer	Code
Sony	770, 771, 772
5.1ch DVD AV System	
Manufacturer	Code
Sony (DAR)	601, 602, 603, 604
AV Receivers	
Manufacturer	Code
Sony	764
VCRs	
Manufacturer	Code
Sony	301, 302, 303
Admiral (M. Ward)	327
Aiwa*	338, 344
Audio Dynamic	314, 337

Manufacturer	Code
Cable Boxes	
Broksonic	319, 317
Canon	309, 308
Citizen	332
Craig	302, 332
Curtis Mathes	304, 338, 309
Daewoo	341, 312, 309
DBX	314, 336, 337
Dimensia	304
Emerson	319, 320, 316, 317, 318, 341
Fisher	330, 335
Funai	338
General Electric	329, 304, 309
Go Video	322, 339, 340
Goldstar	332
Hitachi	306, 304, 305, 338
Instant Replay	309, 308
JC Penney	309, 305, 304, 330, 314, 336, 337
JVC	314, 336, 337, 345, 346, 347
Kenwood	314, 336, 332, 337
LG	332
LXI (SEARS)	332, 305, 330, 335, 338
Magnavox	308, 309, 310
Marantz	314, 336, 337
Marta	332
Memorex	309, 335
Minolta	305, 304
Mitsubishi/MGA	323, 324, 325, 326
Multitech	325, 338, 321
NEC	314, 336, 337
Olympic	309, 308
Optimus	327
Orion	317
Panasonic	308, 309, 306, 307
Pentax	305, 304
Philco	308, 309
Phillips	308, 309, 310
Pioneer	308
Quasar	308, 309, 306
RCA/PROSCAN	304, 305, 308, 309, 311, 312, 313, 310, 329
Realistic	309, 330, 328, 335, 324, 338
Sansui	314
Samsung	322, 313, 321
Sanyo	330, 335
Scott	312, 313, 321, 335, 323, 324, 325, 326
Sharp	327, 328
Signature 2000 (M. Ward)	338, 327
SV 2000	338

Manufacturer	Code
Satellite Receivers	
Sony	801
Dish Network	810
EchoStar	810
General Electric	802
Hitachi	805
Hughes	804
Mitsubishi	809
Panasonic	803
RCA/PROSCAN	802, 808
Toshiba	806, 807

If an Aiwa VCR does not work even though you enter the code for Aiwa, enter the code for Sony instead.

Replacing the Lamp

If the screen becomes dark, the color looks unusual, or the LAMP indicator on the front of the LCD projection TV flashes, it is time to replace the lamp with a new one (not supplied).

The equipment must have infrared (IR) remote capability in order to be used with this remote control.

If more than one code number is listed, try entering them one by one until you come to the correct code for your equipment.

If you enter a new code number, the code number you previously entered at that setting is erased.

In some cases, you may not be able to operate your equipment with the supplied remote control. In such cases, use the equipment's own remote control unit.

1 Loosen the screws on the rear side panel.

The illustration described in right is for KDF-50WE655.

2 Remove the front panel.

3 Loosen the screw with a coin or similar object to remove the lamp cover.

4 Loosen the two screws that hold the lamp, then pull out the lamp.

5 Replace the new lamp and tighten the screws.

6 Reattach the lamp cover and tighten the screw.

7 Reattach the front panel securely.

8 Tightly screw the side panel in its place.

Sony XL-2100U or XL-2100 for KDF-WE655 series

1 Loosen the screws on the rear side panel.

The illustration described in right is for KDF-50WE655.

2 Remove the front panel.

3 Loosen the screw, release the bar (for WF655) or slide the knob to left (for XS955), and remove the lamp cover.

4 Loosen the screw that secure the lamp, then pull out the lamp.

5 Replace the new lamp and tighten the screw.

6 Reattach the lamp cover and tighten the screw.

7 Reattach the front panel securely.

8 Tightly screw the side panel in its place. (only for WF655)

Sony XL-2200 for KDF-WF655 series/KDF-XS955 series

1 Loosen the screws on the rear side panel. (only for WF655)

The illustration described in right is for KDF-50WE655.

2 Remove the front panel.

3 Loosen the screw, release the bar (for WF655) or slide the knob to left (for XS955), and remove the lamp cover.

4 Loosen the screw that secure the lamp, then pull out the lamp.

5 Replace the new lamp and tighten the screw.

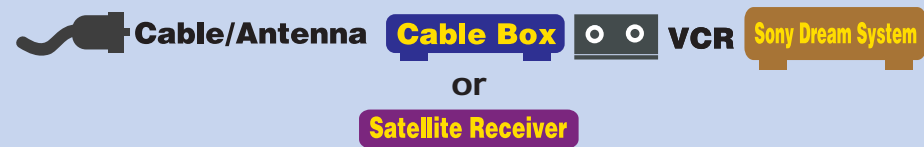
6 Reattach the lamp cover and tighten the screw.

7 Reattach the front panel securely.

8 Tightly screw the side panel in its place. (only for WF655)

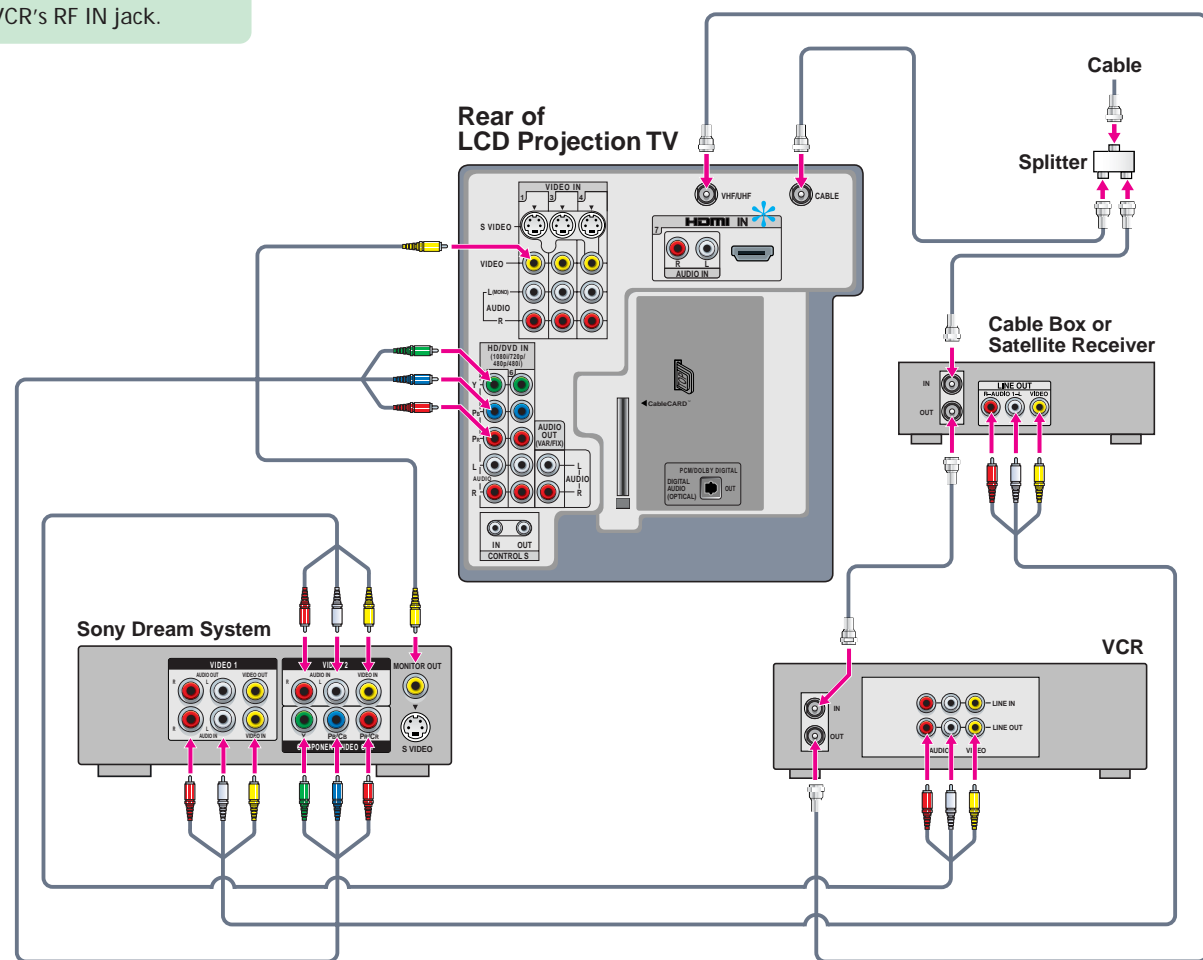
A

Use this diagram if you have;



Cables Required	
Splitter	1
Coaxial	5
Composite	2
Component	1 (without Audio)
Component	1

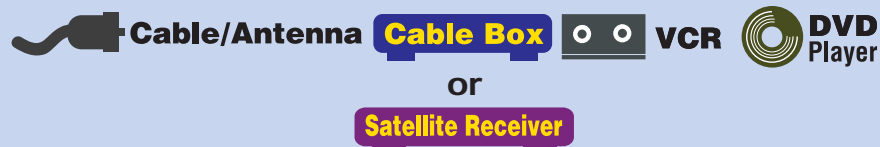
If you are not using a cable box or satellite receiver, connect your cable or antenna to the VCR's RF IN jack.



*There are two HDMI jacks for XS955 series.

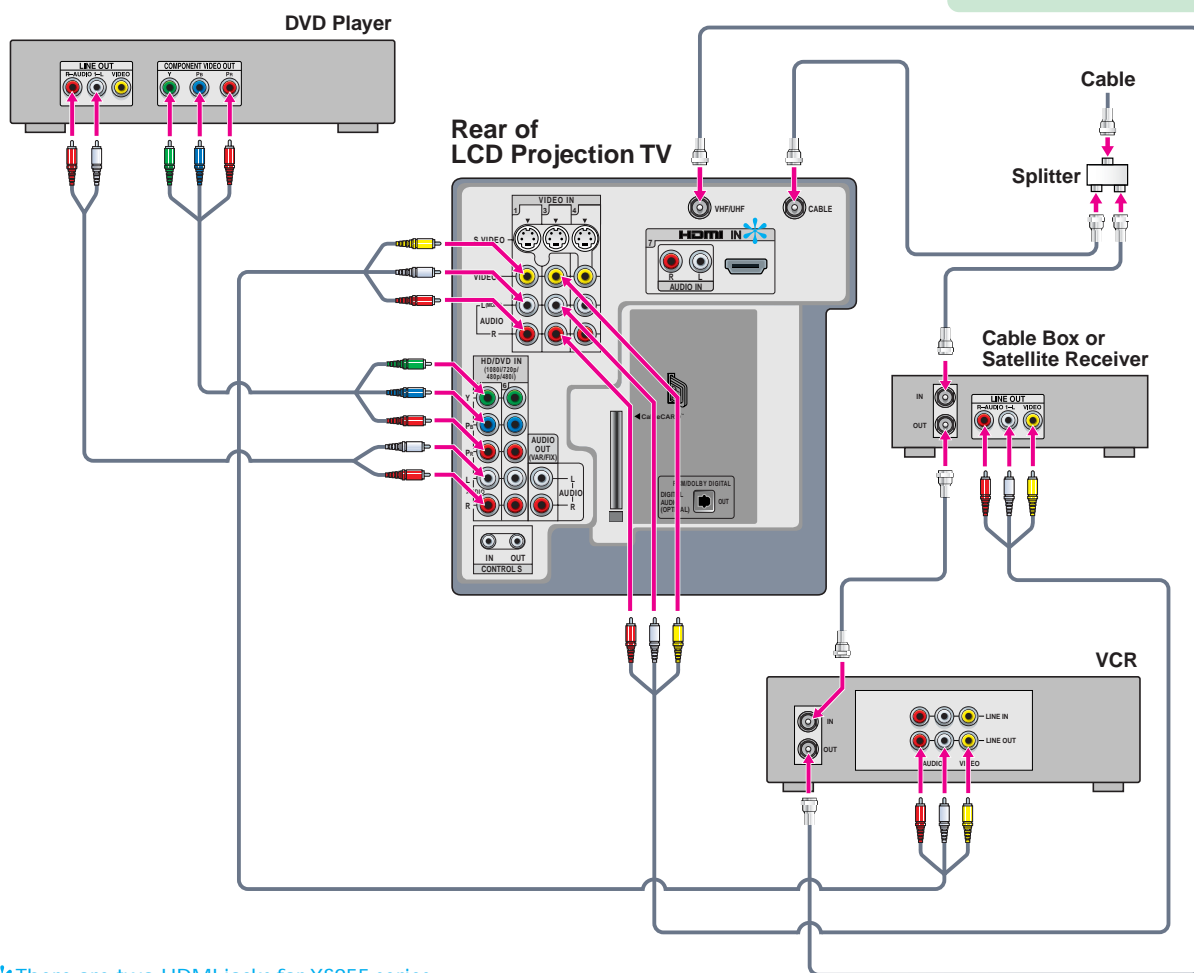
B

Use this diagram if you have;



Cables Required	
Splitter	1
Coaxial	5
Composite	2
Component	1
Audio	1

If your DVD player or satellite receiver has a HDMI jack, use that instead of the video connections shown here.



*There are two HDMI jacks for XS955 series.

If you are not using a cable box or satellite receiver, connect your cable or antenna to the VCR's RF IN jack.

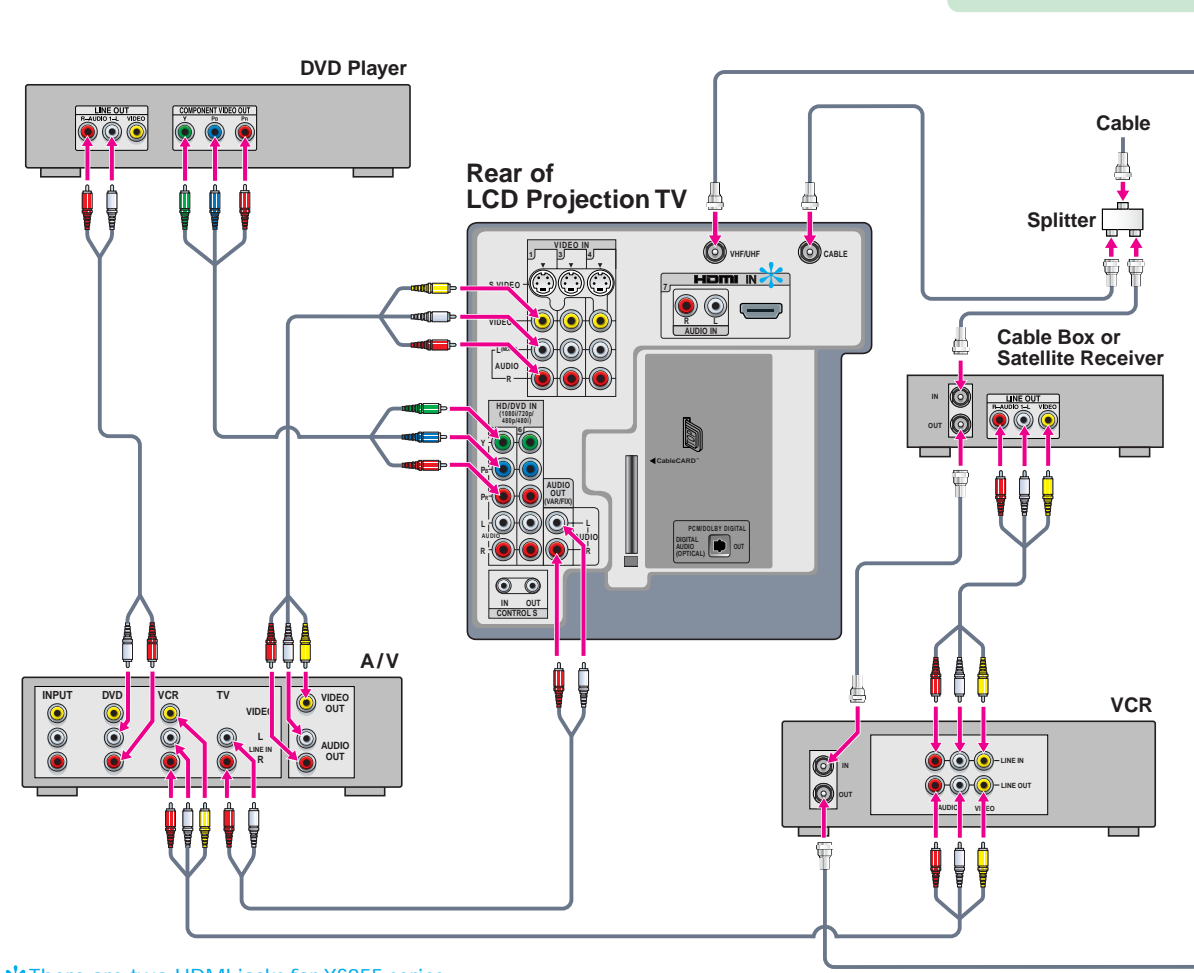
C

Use this diagram if you have;



Cables Required	
Splitter	1
Coaxial	5
Composite	3
Component	1
Audio	2

If your DVD player or satellite receiver has a HDMI jack, use that instead of the video connections shown here.



*There are two HDMI jacks for XS955 series.

If you are not using a cable box or satellite receiver, connect your cable or antenna to the VCR's RF IN jack.

D

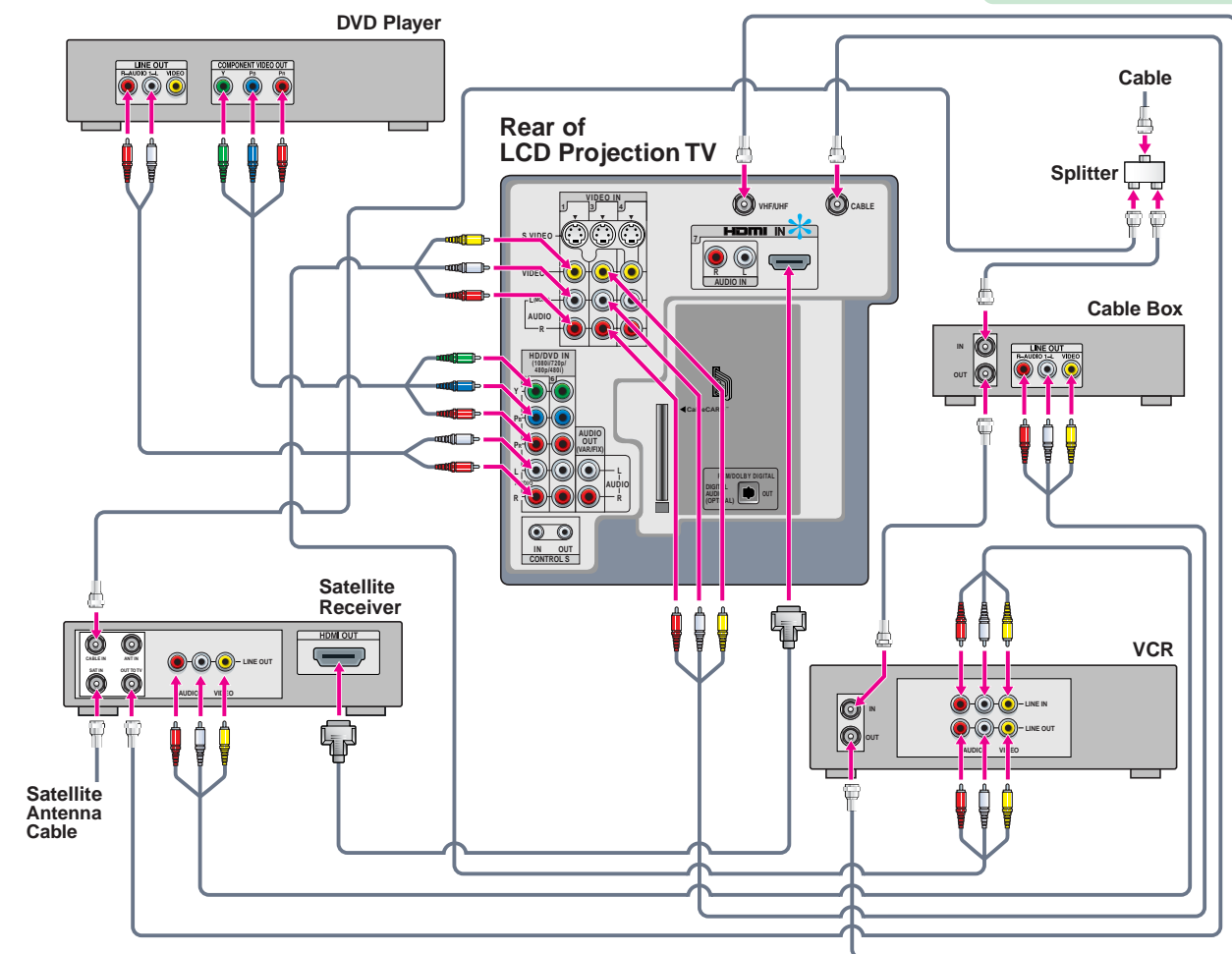
Use this diagram if you have;



Cables Required	
Splitter	1
Coaxial	7
Composite	3
Component	1
HDMI	1
Audio	1

If your DVD player or satellite receiver has a HDMI jack, use that instead of the video connections shown here.

If you are not using a cable box, connect your cable or antenna to the VCR's RF IN jack.



*There are two HDMI jacks for XS955 series.

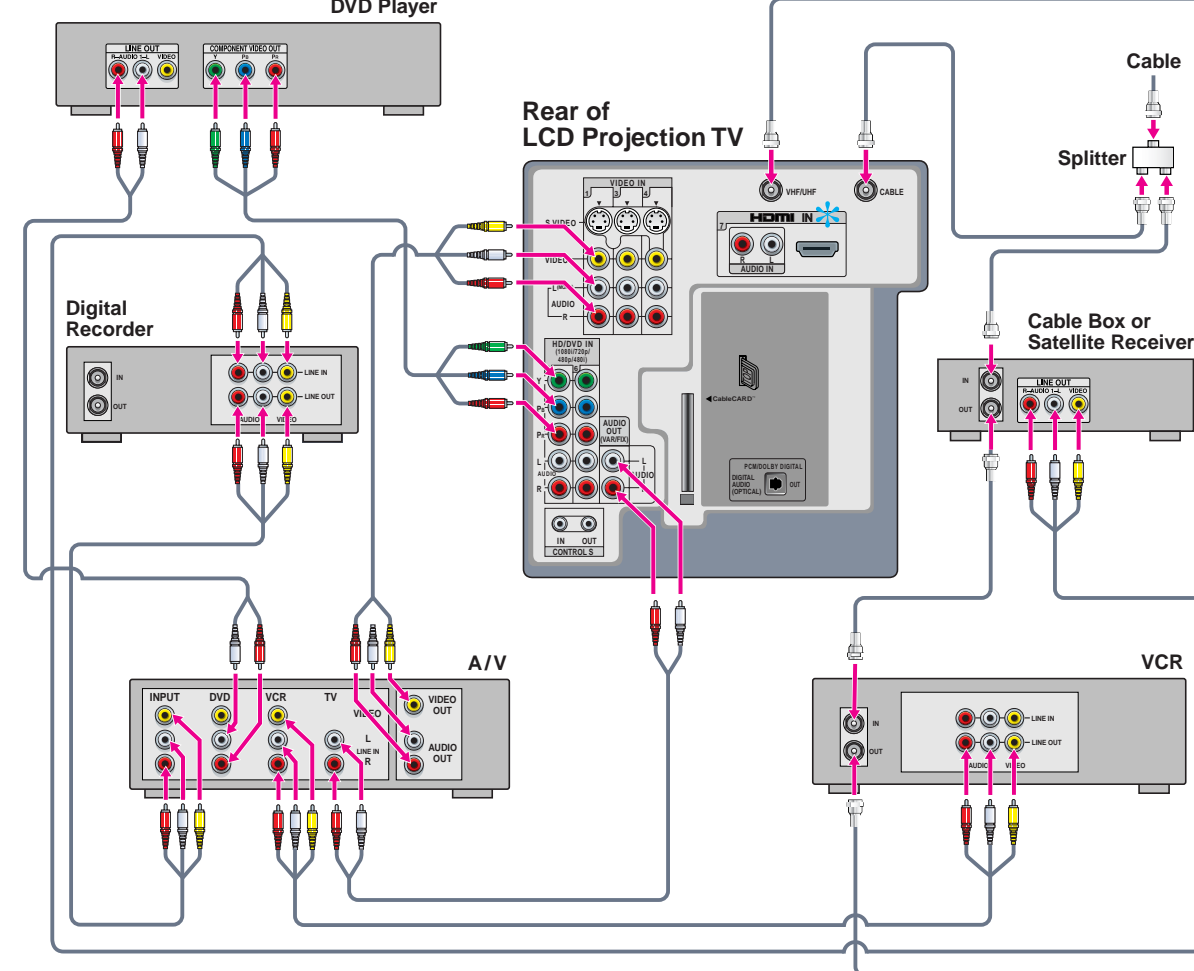
E

Use this diagram if you have;



Cables Required	
Splitter	1
Coaxial	5
Composite	4
Component	1
Audio	2

If your DVD player or satellite receiver has a HDMI jack, use that instead of the video connections shown here.



*There are two HDMI jacks for XS955 series.

If you are not using a cable box or satellite receiver, connect your cable or antenna to the VCR's RF IN jack.

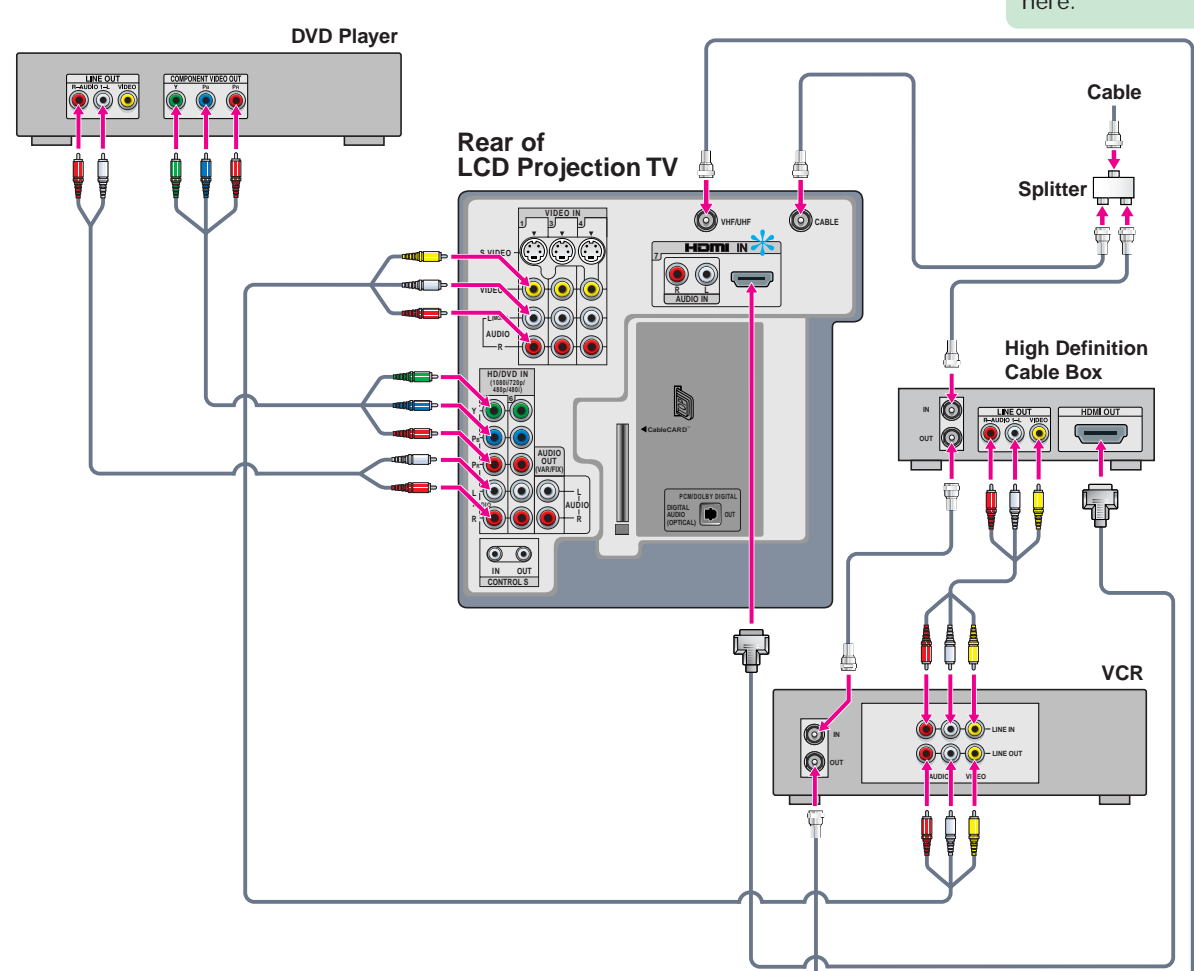
F

Use this diagram if you have;



Cables Required	
Splitter	1
Coaxial	5
Composite	2
Component	1
HDMI	1
Audio	1

If your DVD player or satellite receiver has a HDMI jack, use that instead of the video connections shown here.



*There are two HDMI jacks for XS955 series.

If your cable box has a DVI jack, use that instead of the video connections shown here.