

Pre-Release Cut Sheet!

SONY

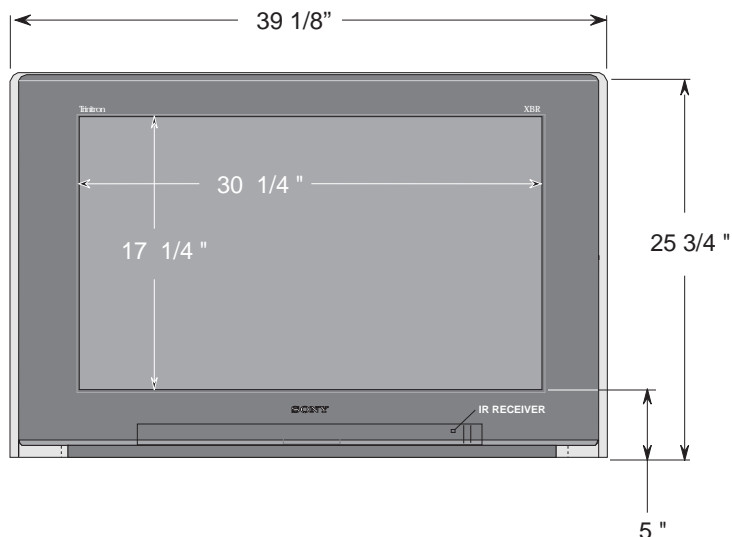
KV-34XBR910

DESCRIPTION: 34" Trinitron®XBR
DIMENSIONS Monitor/Receiver
(WHD): 39 1/8" x 25 3/4" x 23 7/8"
WEIGHT: 198 lbs

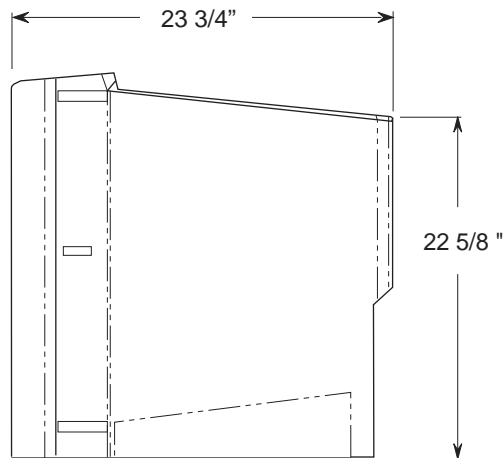
POWER REQUIREMENTS: 120V AC
60Hz
POWER CONSUMPTION: TBD

RM-Y188 REMOTE CONTROL

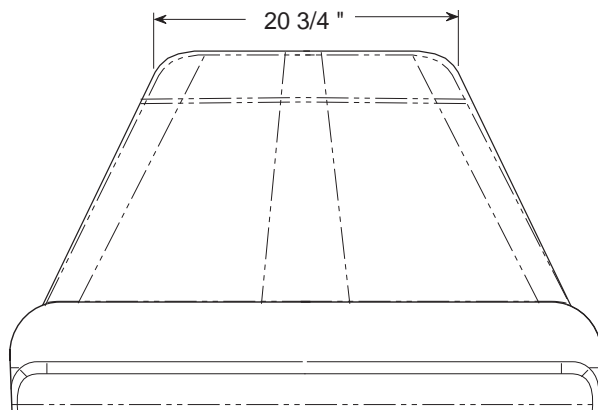
FRONT VIEW



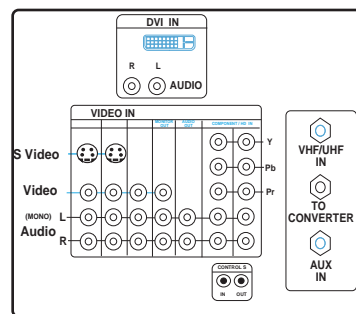
SIDE VIEW



TOP VIEW



JACK PACK



NOTE :

WHERE THERE ARE CLOSE TOLERANCES INVOLVED IN CABINET BUILDING OR APPLICATIONS WHICH REQUIRE A GREAT DEGREE OF PRECISION WE RECOMMEND THAT THE PRODUCT ITSELF BE USED TO MAKE THE ACTUAL MEASUREMENTS. SONY WILL NOT BE RESPONSIBLE FOR INACCURACIES IN THE DESIGN OR MANUFACTURE OF ENCLOSURES .

Consumer Integrated Systems • Park Ridge, New Jersey 07656 • FAX (201) 930 7891 • b2b.sel.sony.com
Features and specifications subject to change without notice. • Non-metric weights and measurements are approximate.

Pre-Release Cut Sheet!