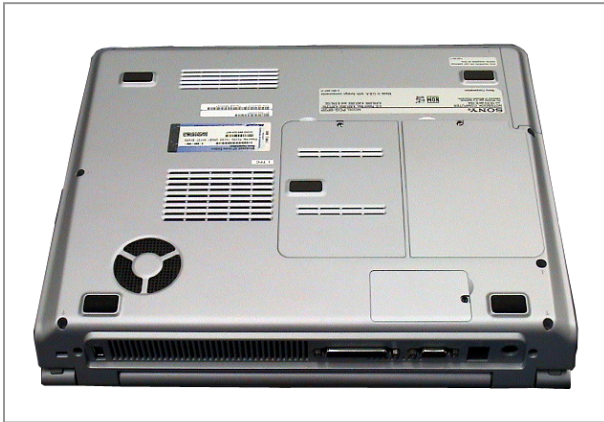


IMPORTANT! **PLEASE READ BEFORE YOU START**

- If after reading this information and instructions you are not comfortable doing the repair, please call toll free 1-866-651-7669 for further assistance.
- Follow the ESD (Electrostatic Discharge) damage prevention instructions:
 - Hold parts by the edges, away from exposed circuitry when possible.
 - Do not walk around excessively as this promotes static build-up.
- Sony will not be held responsible for any cosmetic scratches or damage due to placement of your Notebook Computer on an inappropriate surface. Prior to initiating replacement of the Hard Disk Drive, set up an appropriate work environment; a towel spread across a clean table will help prevent scratches.
- Remove all jewelry before beginning the work, these could potentially scratch the surface of your Notebook Computer or short out electronic components.
- Electronic components shown in the pictures may differ slightly in appearance from the ones you received.



Step 1. To prevent any kind of cosmetic damages and scratches, place your PC upside down on top of a soft surface, with the ports facing you.



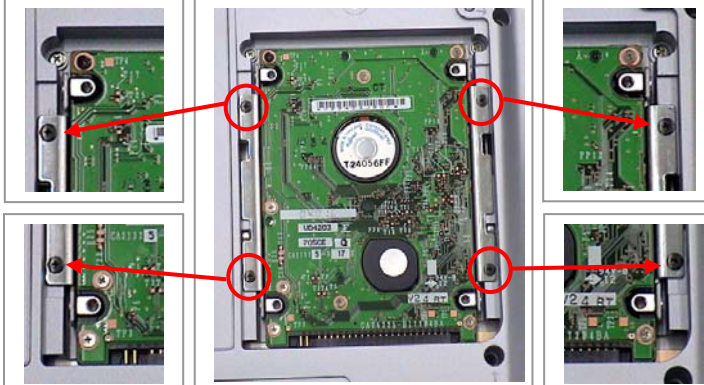
Step 2. IMPORTANT!
Disconnect the power cord and remove the battery.
FAILURE TO DO SO CAN RESULT IN DAMAGE TO THE PC.



Step 3. Using the enclosed screwdriver, remove the marked screw and set aside.



Step 4. Remove hard drive access door as shown and set aside.



Step 5. Using the enclosed screwdriver, remove the four (4) screws as indicated in the picture. **CAUTION!** Be careful not to drop screws into the unit.



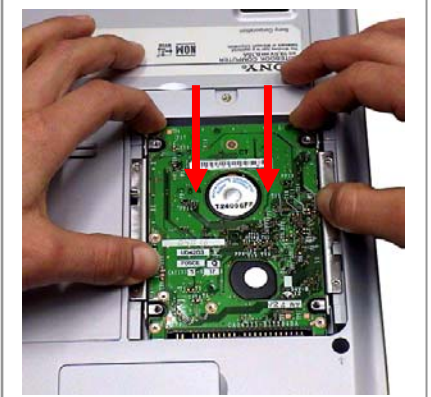
Step 6. Gently slide the drive in the direction of the arrows to release the pins from the socket.



Step 7. Gently remove the drive as shown. **CAUTION!** Be careful not to lift the drive before releasing the pins from the socket as instructed in Step 6!



Step 8. Place the new drive flat in the opening. Slide the drive into position in the direction of the arrows, as shown above. Make sure both rows of pins have been inserted into the socket.



Step 9. Using the enclosed screwdriver, reinstall the four (4) previously removed screws. **CAUTION!** Be careful not to drop screws into the unit, and be careful to use the correct screws, as shown in the picture. Do not over tighten the screws!



Step 10. Using the enclosed screwdriver, reinstall the hard drive access door and screw. Return the defective Hard Drive to Sony following the included shipping instructions.