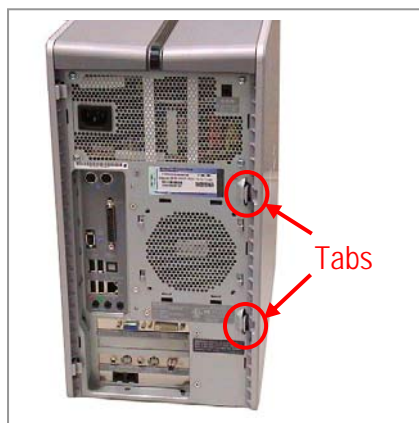


IMPORTANT! PLEASE READ BEFORE YOU START

These easy instructions are intended to guide you through the replacement process. If you need additional help, please call 1-866-651-7669 for technical support from 9:00 am to 11:00 pm EST.

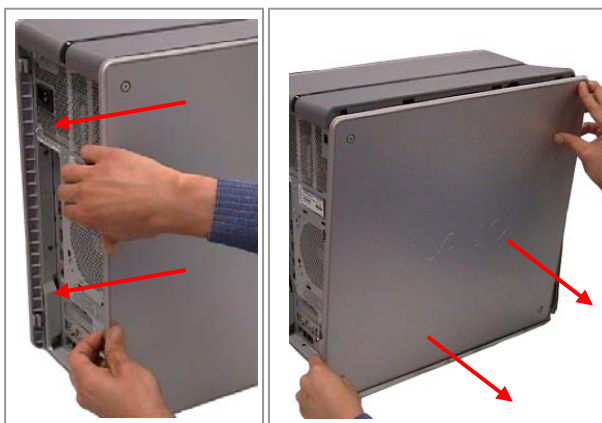
- ✓ Before replacing the Hard Drive, place your desktop computer on a clean or covered surface to avoid damage to the computer's case.*
- ✓ Follow the ESD (Electrostatic Discharge) damage prevention instructions:
 - Hold parts by the edges, away from exposed circuitry when possible.
 - Do not walk around excessively as this promotes static build-up.
- ✓ Remove jewelry before you begin work, to avoid scratching the surface of your desktop computer.*
- ✓ The appearance of the electronic components shown in the illustrations may be different from the components shipped. This slight difference does not affect the accuracy of these instructions.

* Sony is not responsible for damage caused by incorrect handling of the desktop computer.



Step 1. Place your PC on a solid surface.

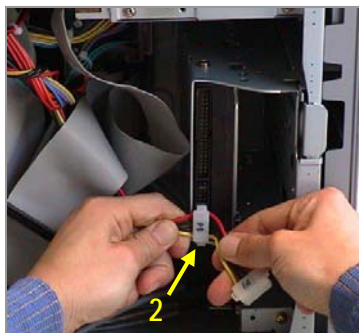
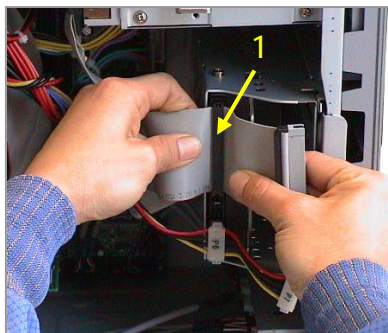
CAUTION! ⚠ Disconnect the power cord, failure to do so can result in unit damage or personal injury. Locate the release tabs on the right as shown.



Step 2. Press and hold the 2 tabs in the rear, as shown. Slide the panel in the direction of the arrows and pull out to remove the side panel, set panel aside. The inside of the unit will be exposed.



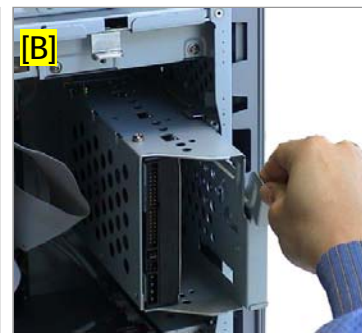
Step 3. Rotate the PC so the inside is facing to you. Identify the location of the Hard Drive's connections.



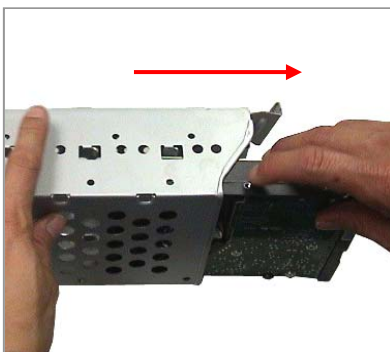
Step 4. Proceed to disconnect the IDE Cable [1] and Power Cable [2] from the Hard Drive.

IMPORTANT! Some force may be required to initiate the removal of the cables. Take caution not to damage the cables.

Pull with equal force on both sides of each cable to remove them as shown above.

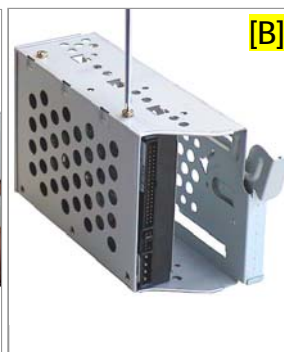
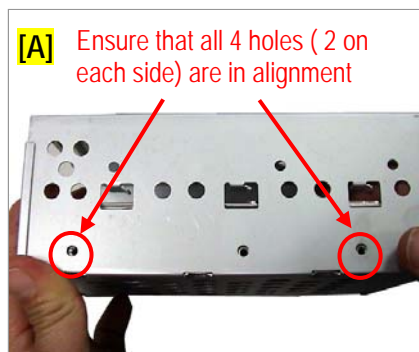


Step 5. [A] Release the HDD bracket by pulling on the latch as shown on the picture. Some force may be required to unlock the latch. [B] Slide out the complete bracket assembly out of the unit.



Step 6. Using the enclosed magnetic screwdriver, remove the four (4) screws that secure the Drive into the bracket. **IMPORTANT!** Before proceeding, take note of original position of the Drive inside the bracket.

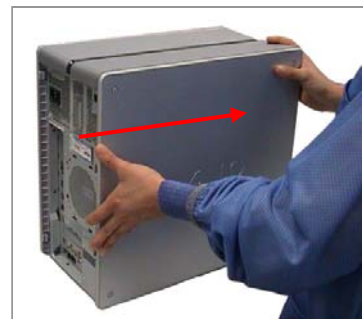
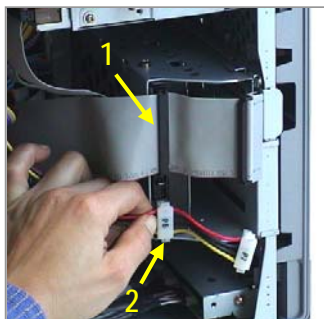
Slide out the original drive and replace it with the new drive in the same position.



Step 7. [A] Slide New Hard drive inside bracket with all holes in alignment. [B] Reinstall the four (4) screws previously removed, securing new drive into the bracket.



Step 8. Reinstall the rail being careful to align the rails with the guides. Firmly press the latch to lock the bracket in place.



Step 9. Reconnect the IDE Cable [1] and Power Cable [2] into their original position. Align the Side Panel and slide it on the direction of the arrow as shown until the Tabs are locked in place.