

5GHz
Wireless LAN PC Card
PCWA-C500 Quick Start Guide

For Microsoft® Windows® XP Home Edition and
Microsoft® Windows® XP Professional Users

This guide provides an overview of the functions of the 5GHz Wireless LAN PC Card PCWA-C500 and the necessary preparations before use. Please read first

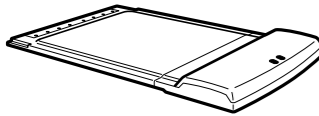


This guide provides an overview of the functions of the 5GHz Wireless LAN PC Card PCWA-C500 and the necessary preparations before use. When using the 5GHz Wireless LAN Access Point PCWA-A500 (optional) read this together with the manuals provided with the Access Point.

Unpacking

While unpacking the product, confirm that the following items are present.

- Wireless LAN PC Card



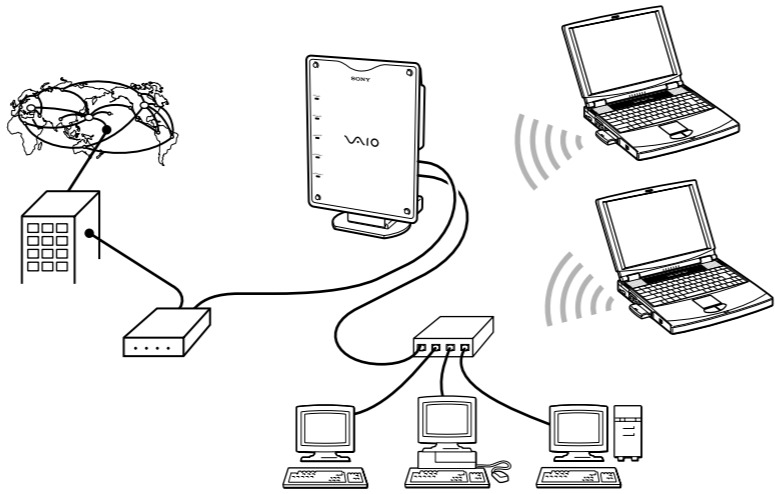
- PC Card case
- CD-ROM (Setup Disc)
- Operating Instructions
- Quick Start Guide for Microsoft® Windows® Millennium Edition and Microsoft® Windows® 2000 Professional Users
- Quick Start Guide for Microsoft® Windows® XP Home Edition and Microsoft® Windows® XP Professional Users
- Warranty card
- Other printed materials

• In this document, Microsoft® Windows® XP Professional and Microsoft® Windows® XP Home Edition are referred to as Windows XP.

Applications

Accessing the Internet from various places in the house
(Access Point Network connection mode)

Access Point Network connection mode allows you to construct a wireless network based on an Access Point (optional). By using a computer with a Wireless LAN PC Card, you can communicate with the Access Point, and share files with other computers via the Access Point. Furthermore, if you connect the Access Point to a DSL modem, cable modem or ISDN router, you can access the Internet from various places in the house.



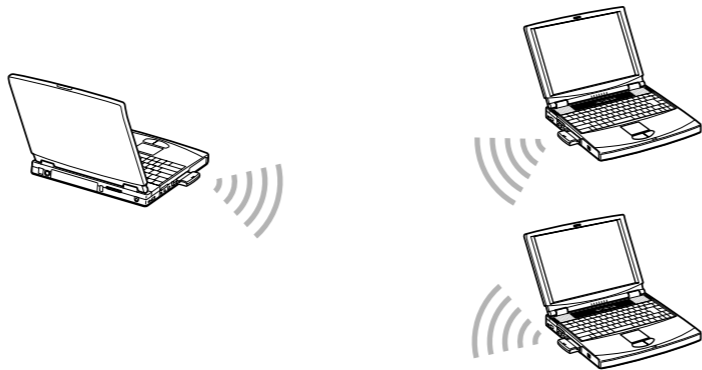
Hint

The above illustration shows the Access Point connected to an Ethernet LAN, providing network access to two wireless mobile notebook computers.

High bit rate movie streaming playback*
(Peer to Peer Network connection mode)

Peer to Peer Network connection mode allows computers equipped with Wireless LAN PC Cards to communicate directly, without using a Wireless LAN Access Point. With this connection mode, users can share files directly from one computer to another. Higher bit rates are achieved when using the Peer to Peer Network connection mode because communications are not routed via the Access Point and therefore are subjected to less interference. This makes the Peer to Peer Network connection mode well-suited for use with high bit rate movie streaming playback applications.

* A system for simultaneously playing transmitted files at the receiving computer while file transmission is still in progress.

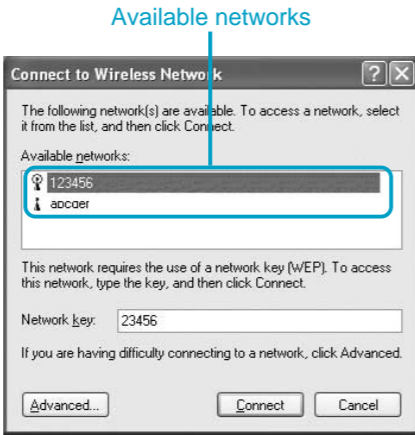


Note

Poor radio conditions can cause interruptions of movie playback over wireless connections.

Network switching made simple!

You can quickly and easily switch between multiple networks, including both Access Point Network connections and Peer to Peer Network connections, after registering the network connections on your computer. See the Online Help for the included Wireless Panel utility and Online Help for Windows XP for details.



Installation and setup procedure

Step 1 (Described in the Access Point Quick Start Guide)

For Access Point Network connection mode, set up the Access Point and connect power. This process is described in the Access Point Quick Start Guide that came with your Access Point.

Step 2

Insert the Wireless LAN PC Card into the computer, and install the Wireless LAN PC Card driver.

Step 3

Install the supplied Wireless Panel software.

Step 4

Configure the appropriate computer communications settings.

Hint

Select either Access Point Network connection mode or Peer to Peer Network connection mode here. If you select Peer to Peer Network connection mode, no further settings are needed.

Step 5 (Described in the Access Point Quick Start Guide)

Configure the appropriate Access Point communication settings. If connecting to the Internet via the Access Point, also configure the Access Point Internet connection settings.

Step 6

Configure the computer communications settings to match the settings configured in Step 5.

Step 7 (Described in the Access Point Quick Start Guide)

Connect the Access Point to the DSL modem, cable modem, or ISDN router.

Step 1

For the Access Point Network connection mode, set up the Access Point and connect power

Refer to the Access Point Quick Start Guide.

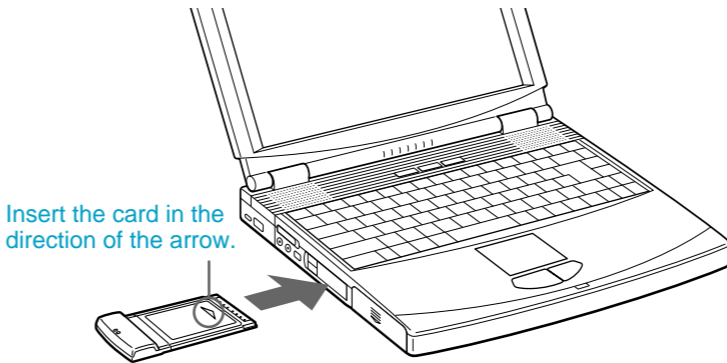
Step 2

Insert the Wireless LAN PC Card in the computer, and install the Wireless LAN PC Card driver

Before inserting the Wireless LAN PC Card...

Copy the contents of the 5GHzWirelessLAN folder from the supplied CD-ROM to the hard disk. In this example, the contents are copied to a folder named “temp” created on the D drive.

The following illustration shows insertion of the Wireless LAN PC Card in a computer.



Note

If your computer has an upper and a lower PC card slot, insert the Wireless LAN PC Card into the upper slot. Inserting it into the lower slot blocks the top slot with its antenna.

Hint

Refer to the Wireless LAN PC Card Operating Instructions (separate booklet) for the procedure to remove the Wireless LAN PC Card.

When the Wireless LAN PC Card is first inserted, the driver installation wizard runs. Refer to the following descriptions.

Hint

Refer to the Wireless LAN PC Card Operating Instructions (separate booklet) for the procedure to uninstall the driver.

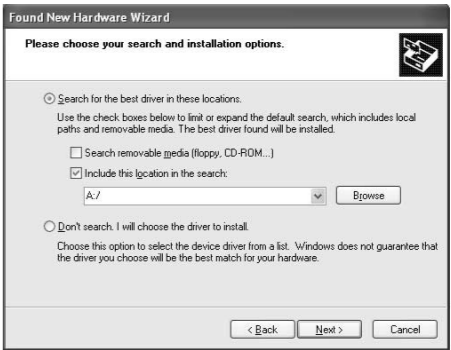
Note

Log on to Windows with the computer administrator user account.

1 Select “Install from a list or specific location (Advanced)”, and Click Next.



2 Select “Include this location in the search.”

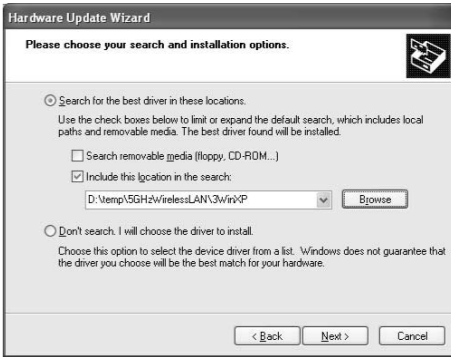


3 Click Browse, and specify the location of the driver.

If you copied the contents of the 5GHzWirelessLAN folder on the CD-ROM to the temp folder on the D drive, specify the 3WinXP folder within those contents (D:\temp\5GHzWirelessLAN\3WinXP).



4 Click OK.



5 Click Next.
The driver is installed.

6 Click Finish.

Step 3

Install the supplied Wireless Panel software

Note

Log on to Windows with the computer administrator user account.

Before Installing ...

- Finish installing the Wireless LAN PC Card driver (refer to Step 2).
- Close any running programs.

- 1 Double click Setup.exe that was copied from the 5GHzWirelessLAN folder on the supplied CD-ROM.
Depending on computer settings, Setup.exe may be displayed as just Setup. If several files with the same name appear in the folder, double click the one with the following icon.



- 2 Click Next.
- 3 Confirm the contents of the displayed License Agreement, and click Yes.
Choose Destination Location dialog box appears.
- 4 Click Next.
Wireless Panel installation begins.
- 5 Click Finish.
The Wireless Panel launches.

Proceed to Step 4.

Step 4

Configure the appropriate computer communications settings

- 1 Double-click the Wireless Panel icon (Received Signal Level indicator) on the task bar.
The Wireless Panel main screen appears.

Hint

For details on the Received Signal Level indicator, see “Viewing the Communication Status” in the Operating Instructions.

- 2 Click the Network List button on the Wireless Panel.
The Network Connections window appears.

- 3 When the computer is connected to a wireless network:
Right-click “Wireless Connection *” (where the asterisk represents a number. This number varies according to conditions) and select View Available Wireless Networks from the shortcut menu.
The Connect to Wireless Network dialog box appears.

When the computer is not connected to a wireless network:

(In this case, “Wireless Network connection *” in the Network Connections dialog box is indicated with an “X”.)

Double-click “Wireless Connection *” (where the asterisk represents a number. This number varies according to conditions).

The Connect to Wireless Network dialog box appears.

Subsequent operation differs according to the connection mode.

For Access Point Network connection mode

The example in this description assumes the Access Point has its factory default settings. If the Access Point settings have been altered, change the new settings to match.



- 1 From Available networks list in Connect to Wireless Network, click the network that you want to connect to.
- 2 If the WEP function is enabled for the Access Point, enter the WEP key in the Network key field.

Hint

WEP is an encryption function that prevents unauthorized access to wireless networks, and the WEP key is a password required to decode encrypted transmissions. When connecting to an existing Access Point, obtain the key value from the administrator of the network.

- 3 Click Connect.
Communication with the Access Point is established.
If you are not going to change the Access Point settings, this completes all the necessary settings. If you want to change the Access Point settings, follow the instructions below.

Note

To use Access Point to connect to the Internet, you must change the Access Point factory default settings.

- 4 Double-click the Wireless Panel icon (Received Signal Level indicator) on the taskbar.
The Wireless Panel main screen appears.
- 5 Click AP Setting.
Your web browser starts and displays the Access Point setup page.

Proceed to Step 5.

For Peer to Peer Network connection mode

This description presumes a peer to peer network of two computers.



- 1 Click Advanced.
The Wireless Network Connection Properties dialog box appears.
- 2 Click the Wireless Networks tab.



- 3 Click Add.
The Wireless Network Properties dialog box appears.



- 4 Enter a Network name (SSID) for this network (up to 32 characters, and may include symbols).
For example, you could enter “peer-to-peer”.
- 5 Select “Data encryption (WEP enabled)”, and clear “The key is provided for me automatically.”
- 6 Enter five characters (which may include symbols) in the Network key field.
“ASCII characters” is displayed as the Key format, and “40 bits (5 characters)” as the Key length.
- 7 Select “This is a computer-to-computer (ad hoc) network; wireless access points are not used”, and click OK.
You are returned to the Wireless Network Connection Properties dialog box.

- 8 Click OK.

- 9 Perform steps 1 through 8 again on the other computer.

Settings for the Peer to Peer Network connection mode are completed.

Step 5 (Access Point Network connection mode only)

Configure the appropriate Access Point communication settings. If connecting to the Internet via the Access Point, also configure the Access Point Internet connection settings.

Refer to the Access Point Quick Start Guide for details.

Step 6 (Access Point Network connection mode only)

Set the computer communications settings to match the settings configured in Step 5

Note

Log on to Windows with the computer administrator user account.

- 1 Right-click the Wireless Network Connection icon on the taskbar and select View Available Wireless Networks from the shortcut menu.
The Connect to Wireless Network dialog box appears.

- 2 Select the Access Point from Available networks.

- 3 If the WEP function of the Access Point is enabled, enter the WEP key in Network key field.

- 4 Click Connect.
Connection to the Access Point is established.

Step 7 (Access Point Network connection mode only)

Connect the Access Point to the DSL modem, cable modem, or ISDN router

Refer to the Access Point Quick Start Guide for details.

Getting help

This section describes how to get help and support from Sony.

About Sony's Support Options

- Sony provides several support options for your Wireless LAN PC Card. When you have questions about your Wireless LAN PC Card and its related software, check these options for answers:
- **This guide** explains how to install the Wireless LAN PC Card, Wireless LAN PC Card driver, and the Wireless Panel utility software provided.
 - **Operating Instructions** explains how to use your Wireless LAN PC Card.
 - **Wireless Panel Online Help** explains how to use the Wireless Panel utility software .
 - **The Sony Wireless LAN PC Card support Web site** <http://www.sony.com/wirelesslansupport/> provides the latest information on your Wireless LAN PC Card.
 - **The Sony e-mail support service** answers your questions by electronic mail. Just send your question in an e-mail message and a customer service representative will reply. To send a question to Sony e-mail support, fill out the e-mail form at <http://www.sony.com/wirelesslansupport/>
 - **The Sony fax-back service** provides you with answers to commonly asked questions. You can use this automated service to request a list of available topics and then select the topics you want to receive. To contact the Sony fax-back service, call **1-877-760-7669**.
 - **The Sony Customer Information Services Center** offers information about your Access Point, Wireless LAN PC Card, and other Sony products that work with your computer. To contact the Sony Customer Information Services Center, call **1-877-760-7669**.
Open 24 hours/day, 7 days/week.