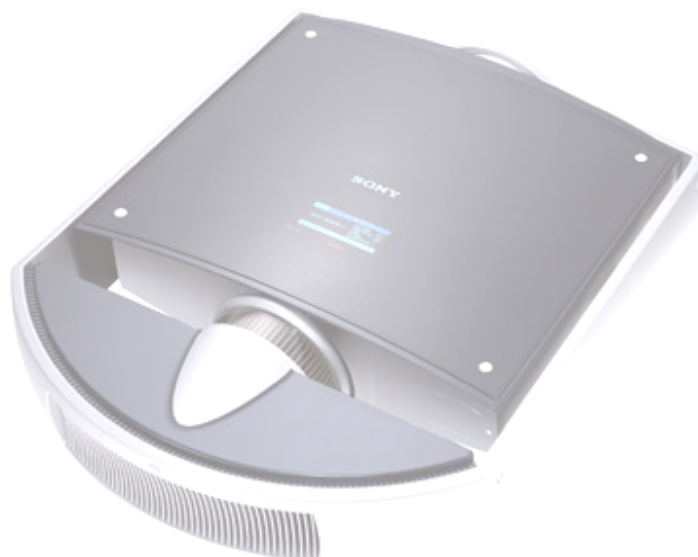


QUALIA 004 Network Function Setup Guide

Rev 0.1



© 2003-2004 Sony Corporation
All Rights Reserved

Change history

Rev	Date	Description	Charge
0.1	03/11/06	First edition creation	Nagatomo

Index

1	Overview.....	1
2	Connecting to the Internet.....	2
2.1	When ADSL connection is used.....	3
	When ADSL modem with router function is used.....	4
	When the ADSL modem has an unused port for connecting to the projector	4
	When ADSL modem without router function is used	5
2.2	When CATV connection is used.....	6
2.3	When FTTH connection is used.....	7
3	When connecting directly to the PC	8
3.1	Connection by hub.....	8
3.2	Connection by cross cable	9
4	Accessing from PC	10
5	Setting	12
5.1	Setting the Mail Report Function	14
	Setting the owner's information	14
	Setting the date and time.....	15
	Setting the Mail Report.....	15
5.2	Setting the security	18
5.3	Advanced setting	19
	Advertisement.....	19
	PJ Talk.....	19
	SNMP.....	19

1 Overview

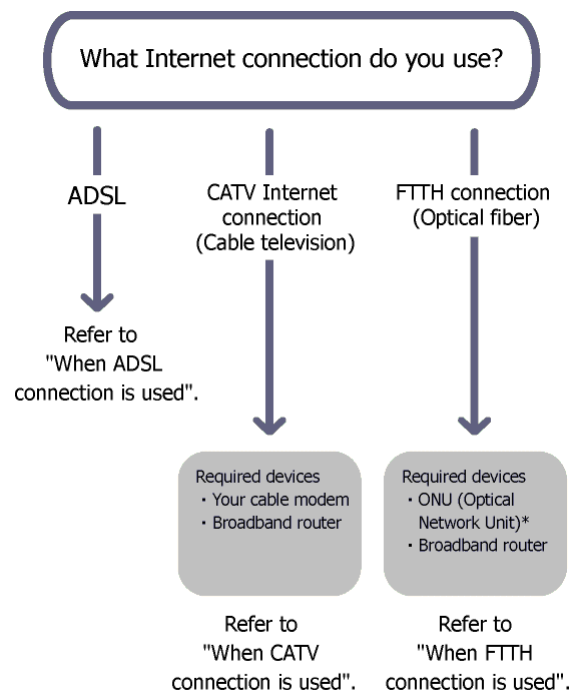
To use the network function of the projector, it must be connected to the same network as the PC. This unit has a built-in Ethernet port, so you can control or set the projector as well as check its status from a browser (Internet Explorer 5.0 or later) on the PC.

The unit must be connected to the Internet to use the Mail Report Function. The function can only be used with a continuous Internet connection such as ADSL, FTTH, or CATV.

2 Connecting to the Internet

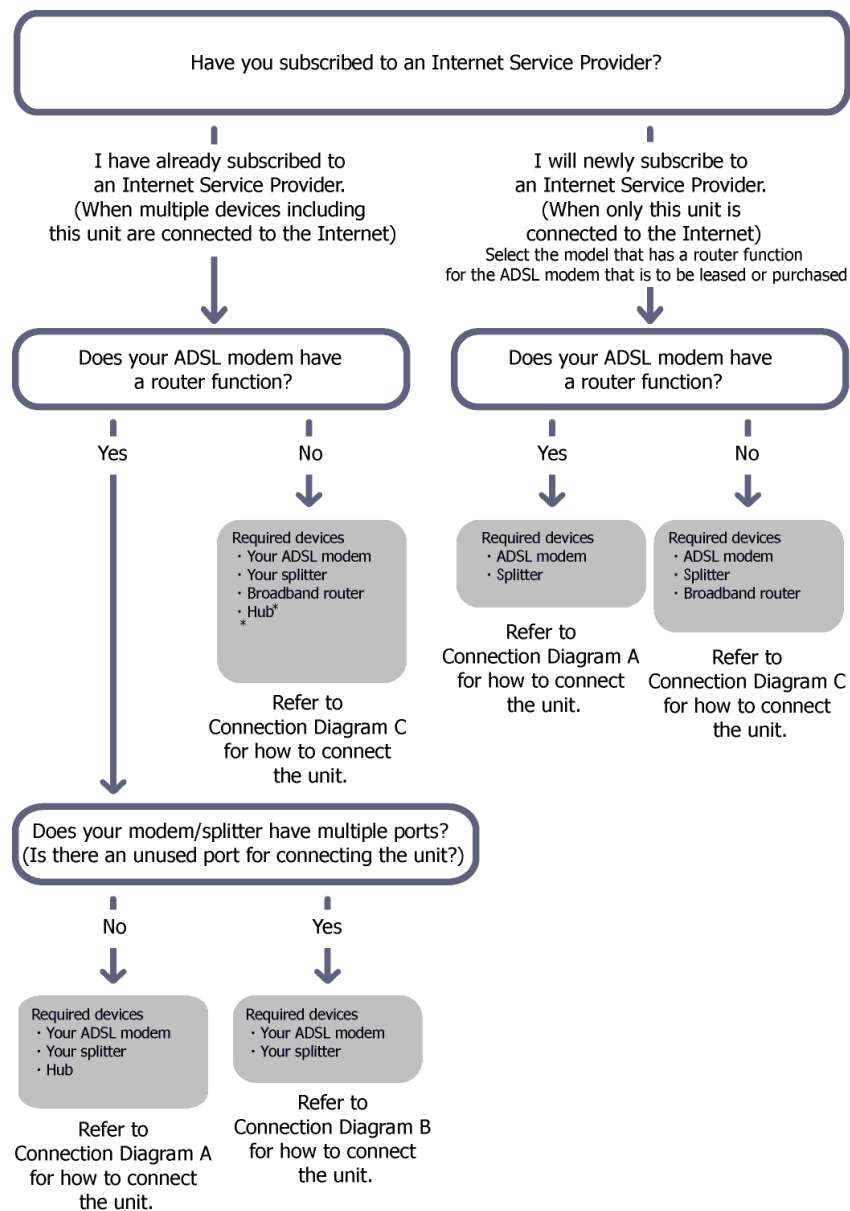
The required devices depend on your type of Internet connection; check which devices are needed as shown below. After preparing all of the required devices, connect the projector to the Internet by referring to section 4 Accessing from PC4, "Accessing from the PC".

If necessary, refer to the instruction manual of your modem, router, or hub.



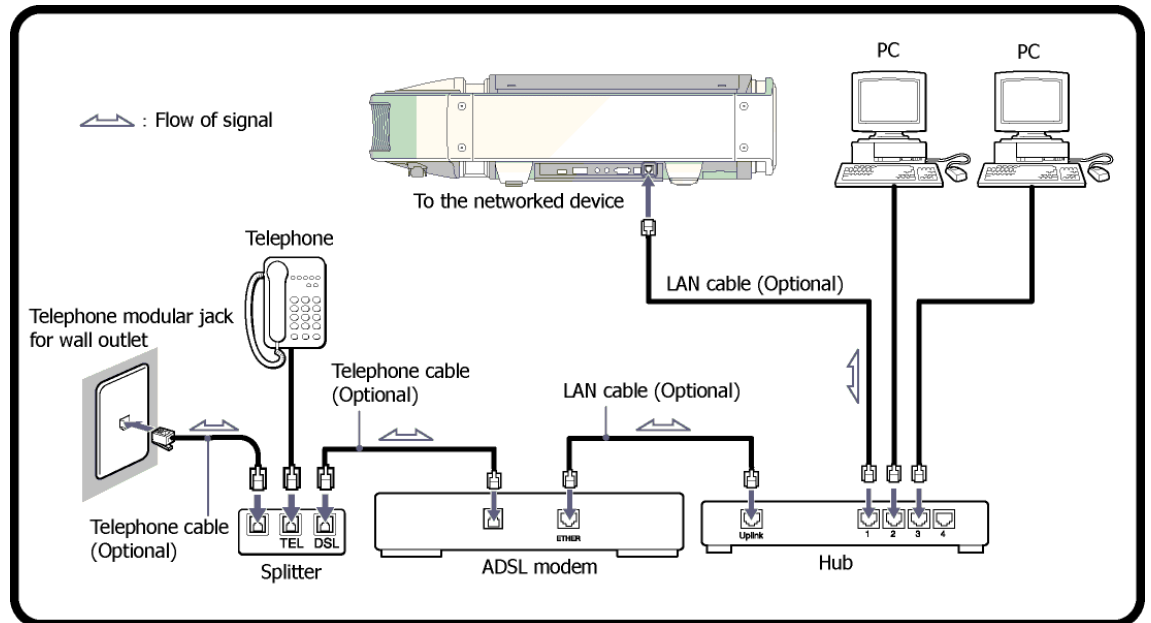
*If you live in an apartment block that provides Internet access, the ONU may be installed in a communal facility.

2.1 When ADSL connection is used

**Note:**

- LAN cable must also be **prepared**.

When ADSL modem with router function is used

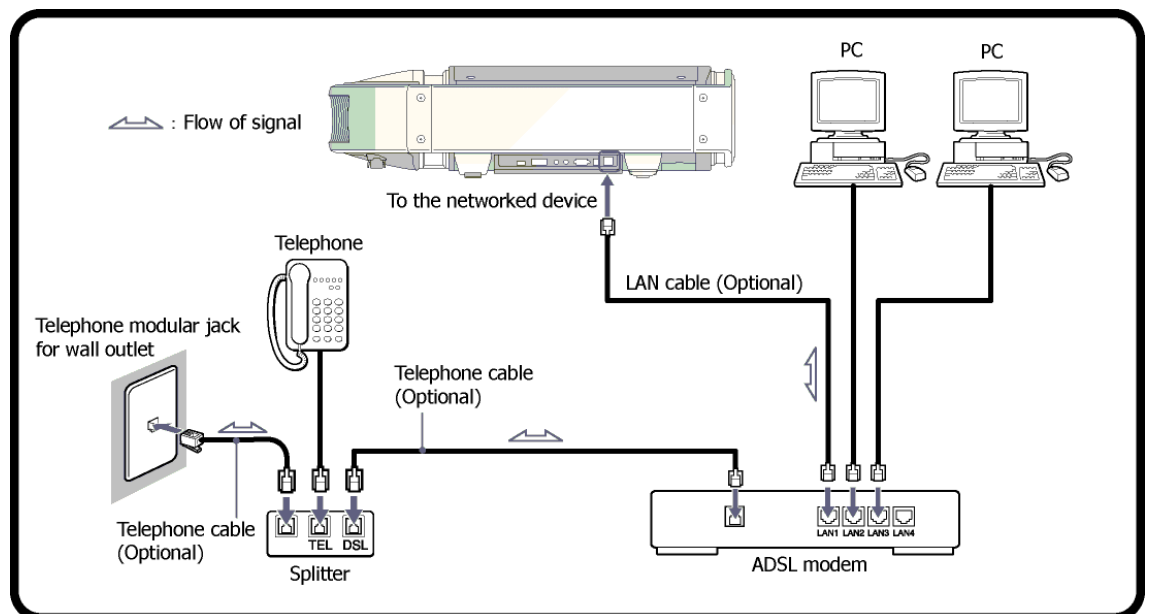


Connection diagram A

Note:

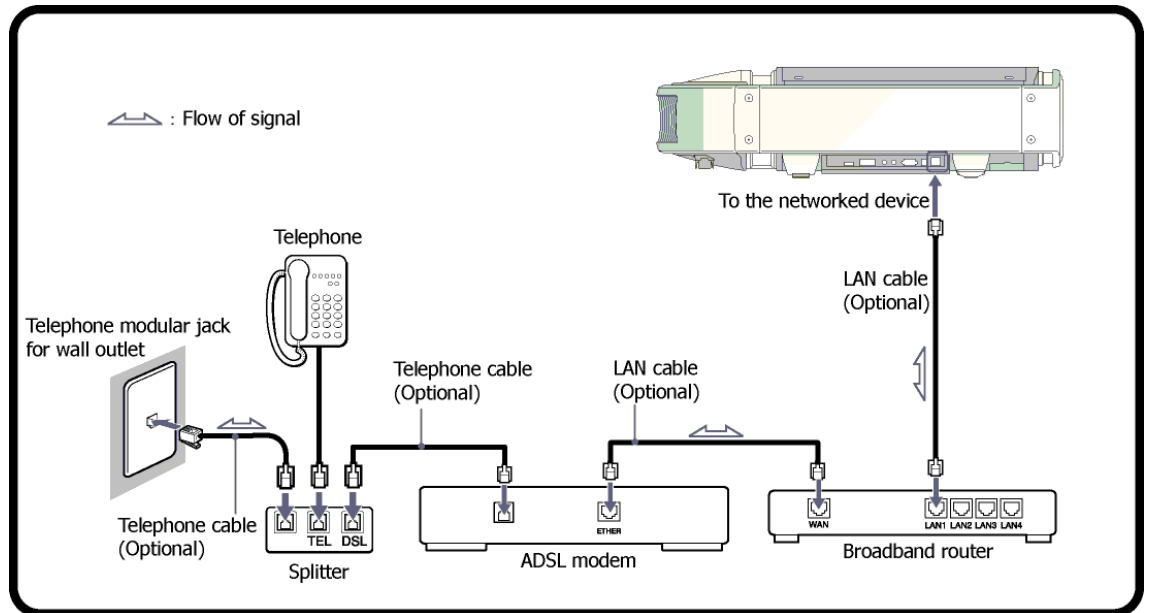
- The projector may not work properly depending on the location or ADSL modem you use.

When the ADSL modem has an unused port for connecting to the projector



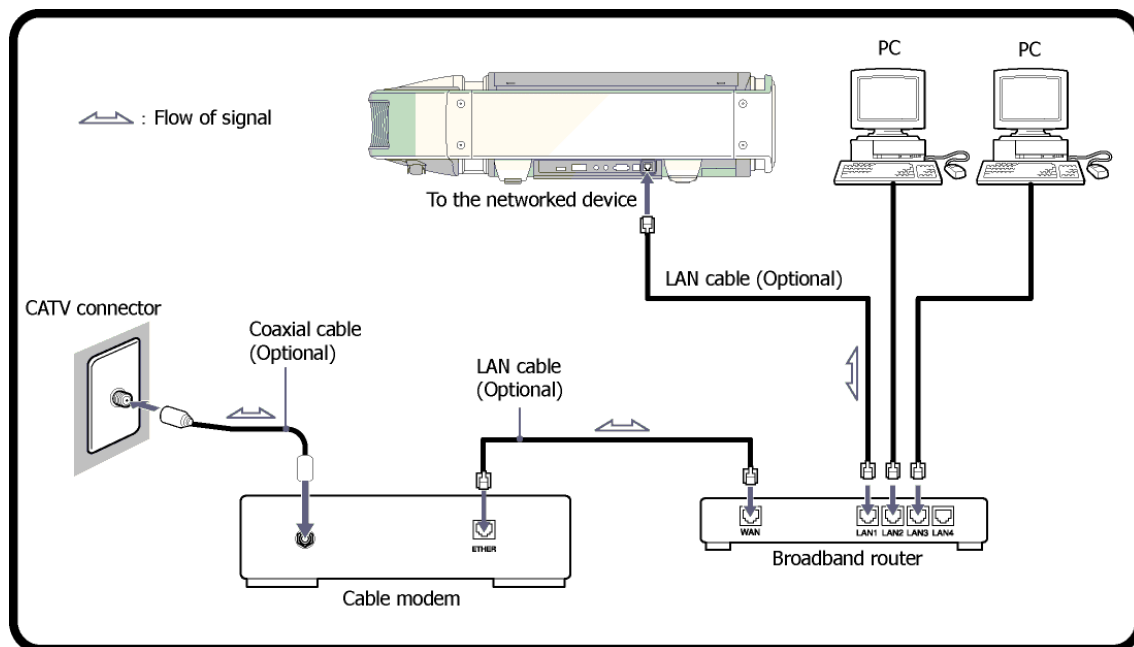
Connection diagram B

When ADSL modem without router function is used



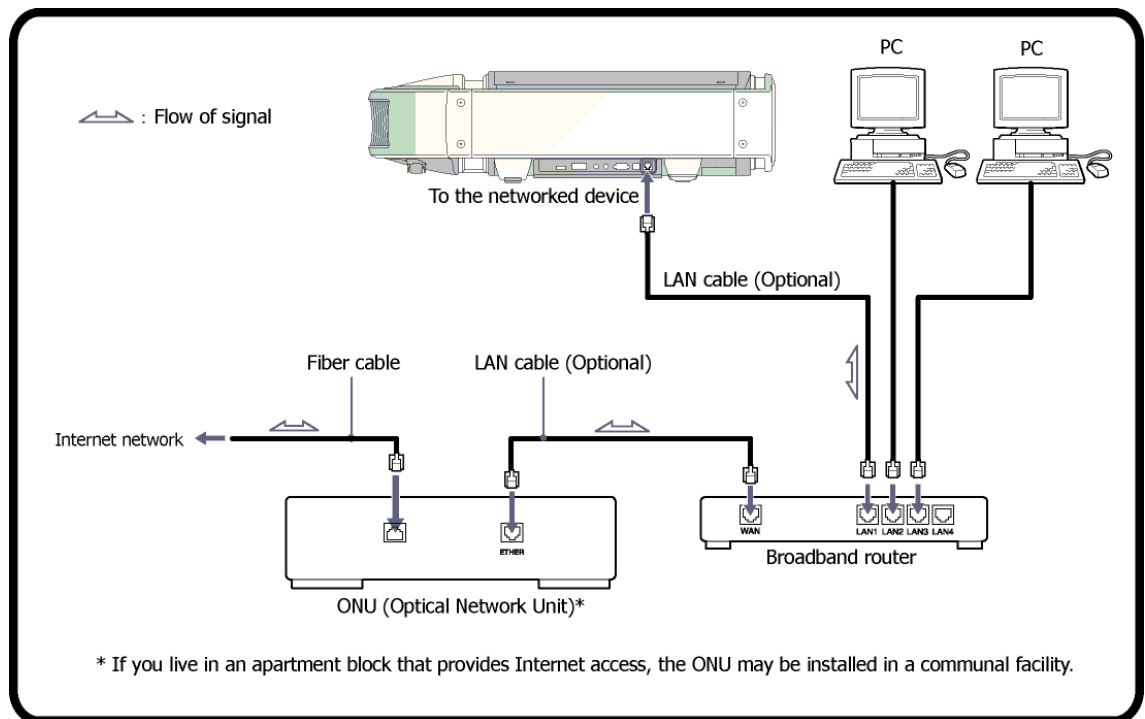
Connection diagram C

2.2 When CATV connection is used



Connection diagram D

2.3 When FTTH connection is used



Connection diagram E

3 When connecting directly to the PC

You can use the network function by directly connecting the unit to a PC in a one-to-one connection.

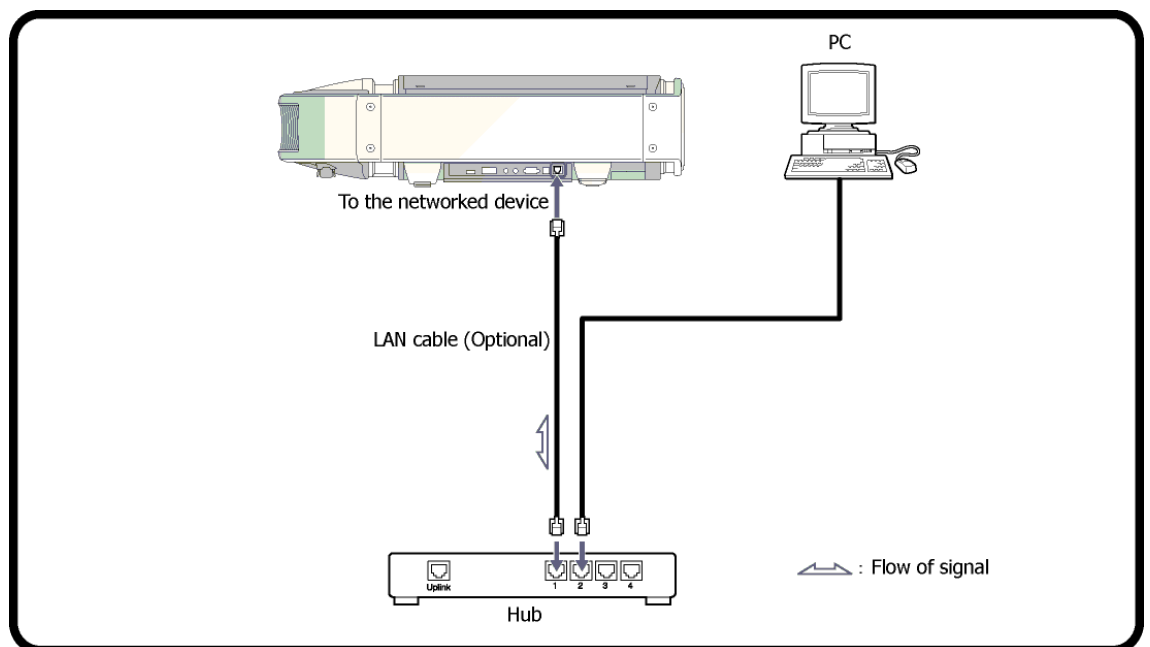
Note:

- The unit must be connected to the Internet in order to use the Mail Report Function.

3.1 Connection by hub

Required devices

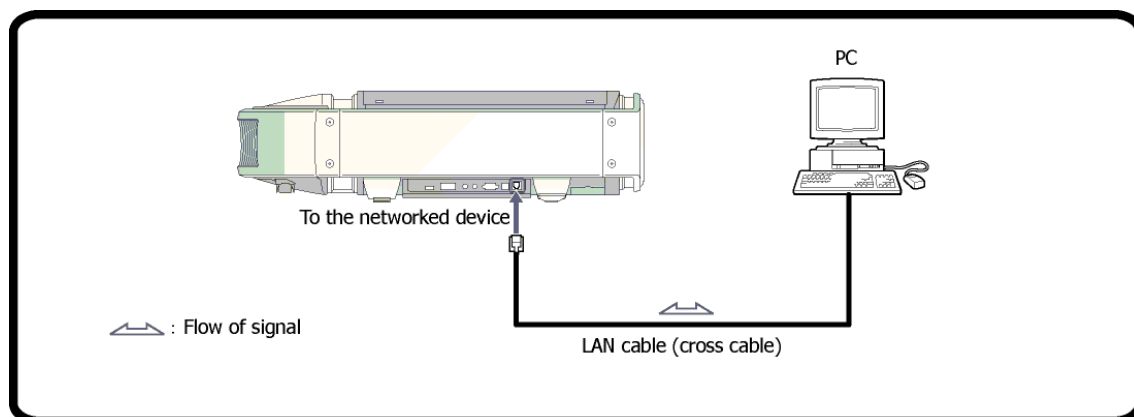
- Hub
- LAN cable



3.2 Connection by cross cable

Required devices

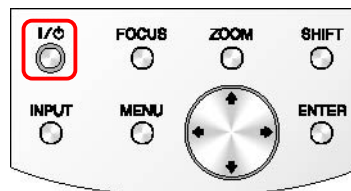
- LAN cable (cross cable)



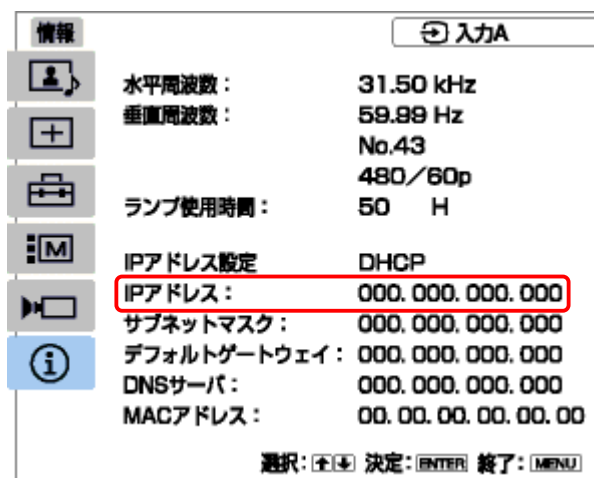
4 Accessing from PC

Access the projector from a browser on the PC as follows.

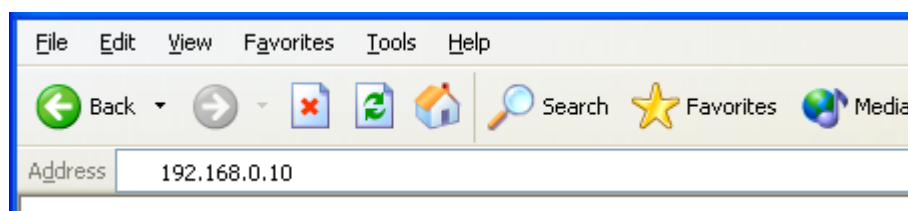
- (1) Turn on the power of the projector.



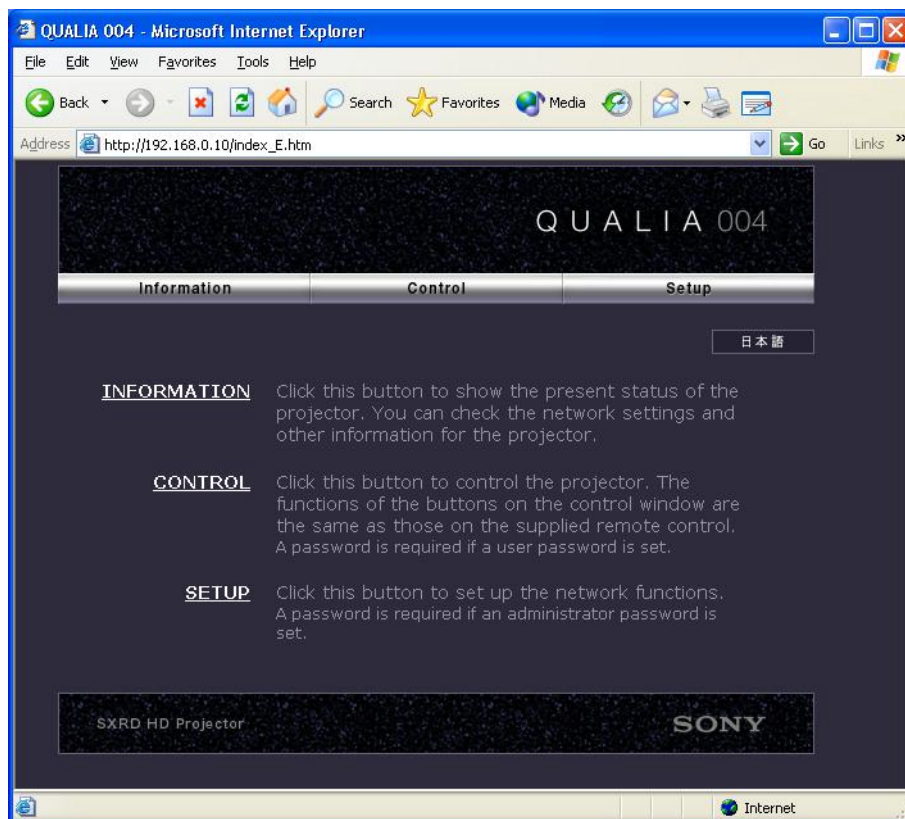
- (2) Display the INFORMATION menu on the screen and confirm the IP address of the projector.



- (3) Enter the IP address in the URL field of the browser.



- (4) The following screen appears.



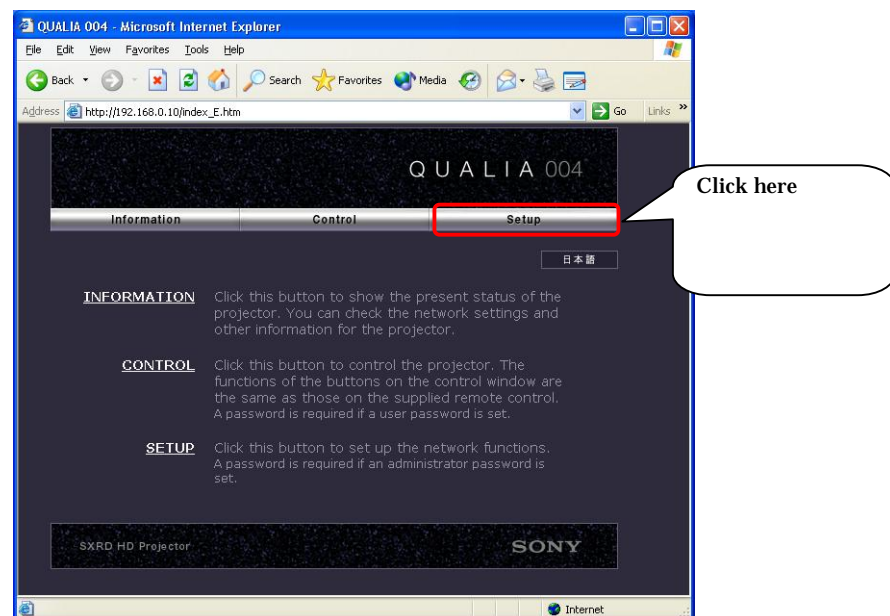
Tips

- When you access the projector next time, the page will be displayed in the language displayed last time.
- The interface language currently selected is used for creating mail messages.

5 Setting

To use the Mail Report Function as well as other functions, various settings must be made. Move to the SETUP screen and make the following settings. A password for the projector administrator is set by default for the SETUP screen.

(1) Click the SETUP button.



(2) Enter the user name in the user authentication screen.



Tips

- The user name and password defined for the projector administrator cannot be changed.
- The password for the projector administrator is valid only on the SETUP screen.

(3) SETUP screen appears.



5.1 Setting the Mail Report Function

This section describes the settings required to use the Mail Report Function.

Setting the owner's information

Enter the owner's information that is automatically added to the mail messages to be sent.

The screenshot shows a web interface for a Sony projector. At the top, it says 'QUA LIA 004'. Below that are three tabs: 'Information', 'Control', and 'Setup'. The 'Setup' tab is selected. On the left side of the 'Setup' tab, there is a vertical menu with icons and labels: 'Owner Information', 'Date & Time', 'Network', 'Password', 'Mail Report', and 'Advanced'. The 'Owner Information' option is highlighted. The main content area shows the 'Owner' section with 'Name' and 'Organization' input fields. Below that is the 'Projector' section with 'Location' input, 'Installation' set to 'FLOOR-FRONT', and 'Lens' set to 'VPLL-ZP310' (with a dropdown arrow). There is a 'Memo' section with a text area and a vertical scrollbar. At the bottom of the form is an 'Apply' button. The footer of the interface says 'SXRD HD Projector' on the left and 'SONY' on the right.

Tips

- The maximum number of characters that can be entered is displayed on the status bar of the browser when you place the mouse on each entry field.
- The Mail Report Function will work even if the owner's information is not set.

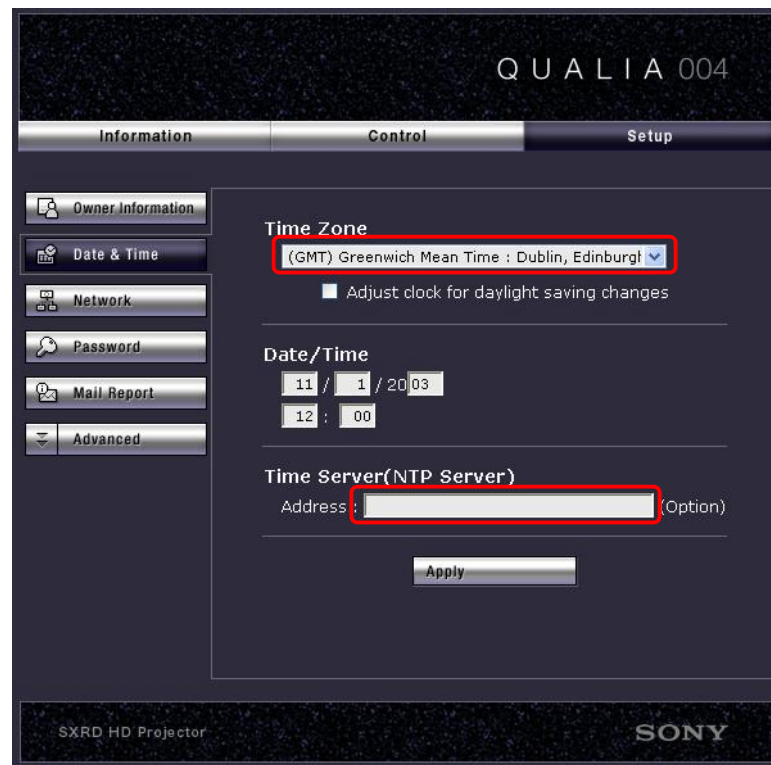
Important

- The customer's consent is required for Sony to receive mail; care must be taken for handling received mail. Contact the PIM Management Group (<http://compliance.prince.sony.co.jp/pim/contents/index.html>) for more details.

Setting the date and time

Set the correct date and time to enable periodical reporting to work properly.

The date and time that are set here are used for date-stamping mail.



Setting the Mail Report

Set the interval for issuing the Report , where to send it, and a mail account.

Make sure to do the following before Sony receives mail.

① Check the contents of mail to be sent:

Show the customer a sample mail message to be sent and obtain the customer's consent to send the Mail Report.

② Send test mail:

Send a test mail to check that the settings are correct and the unit can access the Internet connection.

QUALIA 004

Information
Control
Setup

Owner Information

Date & Time

Network

Password

Mail Report

Advanced

Report Timing

Regular Report

Report Time : At 5:00 v

Date to send

☐ Every Week on Days

☐ Mon
 ☐ Tue
 ☐ Wed
 ☐ Thu
 ☐ Fri
 ☐ Sat
 ☐ Sun

☐ Every Month on Day 1 v

Maintenance Report

Lamp Reminder : hour

Maintenance Reminder : hour

Elapsed Hours : 1 hour ☐ RESET

Address

Email Address	Report Timing		
	Regular	Maintenance	Error
TO1 : 	<input checked="" type="checkbox"/>	<input checked="" type="checkbox"/>	<input checked="" type="checkbox"/>
TO2 : 	<input type="checkbox"/>	<input type="checkbox"/>	<input type="checkbox"/>
CC1 : 	<input type="checkbox"/>	<input type="checkbox"/>	<input type="checkbox"/>
CC2 : 	<input type="checkbox"/>	<input type="checkbox"/>	<input type="checkbox"/>

Mail Form

☒ Standard
☐ Simple

Mail Account

Mail Address :

Outgoing Mail Server (SMTP) :

☐ Requires the use of POP Authentication before send email (POP before SMTP)

Incoming Mail Server (POP3) :

Account Name :

Password :

☐ Send test mail

Check the contents of the mail message View

Apply

Tips

- If the Error Report is used, mail is sent when the remaining lamp illumination time reaches 50 and 15 hours, respectively. Therefore, when the Error Report is enabled, the Maintenance Report does not need to be used.
- POP authentication may be required for sending mail depending on the ISP. If it is required, set the POP setting.

5.2 Setting the security

A password can be set for accessing websites.

The screenshot shows the 'QUALIA 004' network setup interface. At the top, there are three tabs: 'Information', 'Control', and 'Setup'. The 'Setup' tab is selected. On the left side, there is a vertical menu with icons and labels: 'Owner Information', 'Date & Time', 'Network', 'Password' (which is highlighted), 'Mail Report', and 'Advanced'. The main area of the screen is titled 'Administrator' and contains the following fields: 'Name : root', 'Password :', and 'Confirm Password :'. Below these, there is a section titled 'User' with fields for 'Name :', 'Password :', and 'Confirm Password :'. At the bottom of the main area is an 'Apply' button. The bottom of the screen features a dark bar with 'SXRD HD Projector' on the left and the 'SONY' logo on the right.

Important

- If the customer forgets their password, the service engineer needs to cancel the password setting.

The username and password for service engineers when the unit is shipped from the factory (must be kept secret) are:

Username: service

Password: q004-r1

5.3 Advanced setting

Clicking the "Advanced Setting" button displays three additional buttons to switch the setting screens. These advanced settings require network knowledge.

Advertisement

This function periodically notifies the devices on the network of the existence of the projector. A packet SDAP (Simple Display Advertisement Protocol), which is a unique protocol developed by Sony, is periodically broadcast. To use this function, the customer needs to understand the protocol manual available on request and to write software for the PC.

PJ Talk

This function controls the projector via a network, and enables the power of the projector to be turned on/off or the input method to be switched by using the packet SDCP (Simple Display Control Protocol), which is a unique protocol developed by Sony. To use this function, the customer needs to understand the protocol manual available on request and to write software for the PC.

SNMP

This is a communication protocol used to control networked devices. Control information is conveyed between the controlled and controlling devices on the network by this protocol. The protocol is used when the unit is installed on a network with many devices.