

SONY



2001 HOME NETWORK PRODUCTS  
DIRECTV® RECEIVER WITH  
ULTIMATE TV™ SERVICE FROM MICROSOFT®  
DIGITAL SATELLITE RECEIVER/RECORDER

THE SATELLITES,  
THE INTERNET  
AND MORE!

Start with hundreds of digital channels of entertainment from the DIRECTV® satellite service. Add UltimateTV® Service from Microsoft and you can pause live TV and record up to 35 hours of shows without videotape. Then add interactive television, Internet access, E-mail and

web browsing — right from your television screen! That's the beauty of the Sony SAT-W60. It's a whole new way to look at home entertainment.

#### ULTIMATETV™ RECORDING: SATELLITE TV GETS PERSONAL

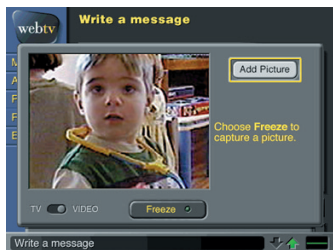
There are hundreds of satellite channels from DIRECTV. With the UltimateTV service, you can shape them all to your personal desires. Now you tailor TV entertainment to your personal schedule, your personal preferences, and your personal lifestyle!

- **Control live television** With the UltimateTV service, live TV becomes personal TV. For example, you'll never again miss out because of a phone call. You can pause, fast-forward up to 300 times the speed, rewind, enjoy frame-by-frame slow motion and create your own instant replays.
- **Record up to 35 hours without a tape** The SAT-W60 captures digital-quality video and audio on a built-in hard disk drive. You can save up to 35 hours of DIRECTV® programming.
- **Record two DIRECTV programs at a time** The SAT-W60 contains two complete satellite tuners. Just imagine recording two DIRECTV shows simultaneously! Or watching one DIRECTV show while you record another! You can enjoy flexibility unlike any VCR.

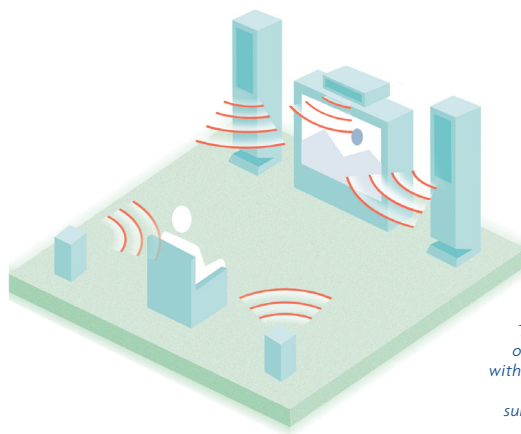
- **My Shows** displays a convenient menu of the programs you've recorded, and shows you have scheduled to record in the future.
- **Follow two shows at once** TV PIP enables you to watch two DIRECTV shows — ideal when your favorite show overlaps with the football season. You can even pause or replay the main picture while keeping an eye on the live inset picture!
- **Programming Guide™** includes up to 14 days of listings for you to browse, making it easy to schedule recordings in advance.
- **TV search** helps you find program listings, based on what you actually want to watch. You can search TV by categories like Horror, Drama or Western. You can even use the supplied wireless keyboard to search for shows by name, and even by actor or director! So it's easier than ever to find your shows.
- **TV Favorites** To help organize your viewing options, TV Favorites shows a personal list of satellite channels you've selected.
- **TV Remind** alerts you when your pre-selected shows are coming on — ideal for "appointment" viewing.

#### HUNDREDS OF DIRECTV CHANNELS

The Sony SAT-W60 delivers home entertainment as never before. You get breathtaking digital-quality picture and sound. Plus access to hundreds of channels of entertainment, including multiple channels of HBO®, Cinemax® and Showtime®, music channels, pay per view movies and events — plus professional and collegiate sports subscriptions you may not find anywhere else.



Multimedia E-mail enables you to attach a video still frame and/or audio clip to your E-mail message.



The SAT-W60 features an optical digital output that connects to an A/V receiver with built-in Dolby Digital decoding. So you can enjoy fabulous 5.1-channel surround sound, on selected programming

#### ULTIMATETV™ INTERNET ACCESS THROUGH YOUR TELEVISION

If you've wanted to get onto the Internet, and you've been waiting for the right time, your wait is finally over. With the SAT-W60 and a subscription to the UltimateTV Service from Microsoft,<sup>1</sup> you don't need to know anything about the Internet. There's no software to buy. And you get free, automatic updates. The SAT-W60 even includes its own wireless keyboard.

You can discover exciting websites, shop from your sofa, E-mail anyone, join chat groups and read bulletin boards — all on your television. There's more. Mic input and A/V inputs let you enhance your E-mail with pictures and sound. UltimateTV features include interactive TV programming for play-along game shows, as well as links to TV-related websites.

When you subscribe to the UltimateTV service, you automatically get three hours of Internet service per month. Or you can opt for an UltimateTV service package with no time restrictions using either your existing Internet Service Provider (not including America Online®) or on WebTV Networks Internet provider.

**DOLBY DIGITAL® OUT** Selected DIRECTV® programming includes Dolby Digital surround sound — the same digital sound tracks used in first-run movie theaters. You can hear all the benefits when you connect the Sony SAT-W60 to an A/V receiver with built-in Dolby Digital decoding. And of course, the UltimateTV recorder captures compatible programs with full Dolby Digital sound!

**NOW PLAYING: LOCAL TV STATIONS** DIRECTV is offering selected local TV stations into designated markets. This service offers stations such as CBS, NBC, ABC, and Fox, with a PBS national feed.<sup>3</sup> Local programming is already available in 41 markets.

The DIRECTV® service has expanded to three satellite orbital locations, located above the equator at 101°, 110° and 119° West. You can receive programming if you have a clear line of sight to the right satellites, the right antenna, the right DIRECTV subscriptions and a Sony receiver!<sup>3</sup> The SAT-W60 is fully equipped to receive programming from all of DIRECTV's satellites.

The Sony SAT-24MD1 multi-satellite antenna comes equipped to receive the satellite signals from 101° and 119° West orbital locations. These orbitals deliver local programming to select markets. When equipped with a commercially

available third Low Noise Block downconverter (LNB), the antenna can also receive signals from the satellite orbital at 110° West, to serve additional markets. The SAT-24MD1 also provides a 4-way multi-switch with four output feeds. The SAT-W60 requires two feeds, leaving two more for other receivers. Each receiver can select and tune channels independently.

#### TAKING COMMAND WITH SONY'S REMOTE COMMANDER® UNIT

Because you'll be using the satellite receiver along with your television, the Sony Remote Commander unit also operates many brands of televisions<sup>4</sup> in addition to functions for DIRECTV® programming with UltimateTV service.

**THE BEST FRIEND YOUR VCR EVER HAD** Even a DIRECTV receiver with built-in tapeless digital recorder can still work seamlessly with your VCR! VCR One Button Record enables you to record a show directly without programming the VCR. An infrared blaster will turn on your VCR, start and stop recording automatically.<sup>5</sup>

The Sony SAT-W60 even includes its own wireless keyboard.



## SAT-W60 DIGITAL SATELLITE RECEIVER/RECORDER

- Tapeless digital video recording with the UltimateTV service
- Satellite TV PIP
- Dual Tuners let you record two DIRECTV shows at the same time
- Watch one satellite show while you record another
- Pause live television up to 30 minutes
- Perform your own slow motion and instant replay
- Records up to 35 hours of DIRECTV® programming in digital-quality picture and sound
- My Shows menu of recorded programs for instant access
- Advanced programming guide for up to 14 days of shows
- TV Search of programming guide by show title, genre, actor or director
- Receives programming from all DIRECTV satellites<sup>3</sup>
- Receives local channels, where available<sup>3</sup>
- TV Favorites listing of your selected channels
- TV Remind alerts you when pre-selected shows come on
- Dolby Digital out via optical digital output
- Internet access through your television
- Three hours per month of Internet access is included with the UltimateTV service<sup>1</sup>
- WebPIP™ capability displays the Internet and TV simultaneously, whether or not your television has picture-in-picture
- Compatible with Interactive TV shows
- Easy Internet access; no computer knowledge required
- KI-W250 wireless keyboard makes it easy to compose E-mail and enter text
- RM-Y804 universal remote also operates many brands of TVs<sup>4</sup>
- VCR One Button Record<sup>5</sup>
- Two sets of A/V outputs
- S-Video output
- RF input for cable or local antenna
- Front panel microphone input to create multimedia E-mail
- Front and rear A/V inputs to create multimedia E-mail
- Automatic software upgrades
- Parallel printer port for future use
- USB port for Microsoft® keyboard
- Stylish silver design



## SAN-24MD1 24" MULTI-SATELLITE ANTENNA

- ▲ Can be configured to receive all three DIRECTV satellite orbitals<sup>3</sup>
- ▲ Receives local programming, where available<sup>3</sup>
- ▲ Supplied 4-way multi-switch provides four output feeds, of which the SAT-W60 uses two
- ▲ Feeds up to two other receivers; each receiver can select and tune channels independently
- 18 x 24" Oval design
- Includes two Low Noise Block downconverters (LNBs), one for the satellite orbital at 101° West and one for 119°
- Commercially-available third LNB required for the satellite orbital at 110°



**EAC-DV2 VOLTAGE SWITCH AND  
EAC-DD1 DIPLEXER**

- Feeds up to four Sony receivers from one Dual-LNB antenna
- Independent station selection at each receiver
- When diplexer is installed outside, combines satellite and UHF/VHF signals so you can use a single cable for both
- When diplexer is installed at the receiver, separates satellite and UHF/VHF signals



**SAN-18D3  
18" SATELLITE ANTENNA**

- Designed to only receive DIRECTV signals from a single orbital location at 101° West
- Receives local channels in over 20 markets served from the DIRECTV satellite orbital at 101° West
- Includes dual Low Noise Block downconverter (LNB)



**SPECIFICATIONS**

Satellite input frequencies	950 - 1450 MHz
Satellite input	F type female coaxial
Antenna input	F type female coaxial
Audio input	Front and rear L/R phono type
Video input	Front and rear phono type
Microphone input	Front minijack
RF output	F type female coaxial
Audio Output	Two L/R phono type
Optical digital audio output	Yes
Coaxial digital audio output	Yes
Video output	Two phono type
S-Video output	4-pin mini DIN
Telephone interface	RJ-11C modular jack
Printer port	Parallel
USB port	Two
Power requirements	120 V AC, 60 Hz
Power consumption, max	90 w
Width	17" (430 mm)
Height	2-3/4" (70 mm)
Depth	11-1/2" (290mm)
Weight	9 lbs. 8 oz. (4.3 kg)

**SUPPLIED ACCESSORIES**

- RM-Y804 remote control
- KI-W250 wireless keyboard
- 4 size AA batteries
- AC power cord
- Audio/video cable
- Telephone cable
- S-Video cable
- T splitter
- Coaxial cable
- IR blaster
- Access card

**ADVANCED PROGRAMMING GUIDE** Includes up to 14 days of listings so you can schedule recordings well in advance.

**AUTOMATIC SOFTWARE UPGRADES**

UltimateTV and WebTV software can be automatically updated to offer the latest enhancements in user features.

**AUDIO/VIDEO INPUTS** Front inputs let you connect a camcorder to create multimedia E-mail with pictures and sound.

**BASIC ULTIMATETV SERVICE** Subscription service that offers the ability to control live television and automatically record up to 35 hours of DIRECTV programming onto a hard disk drive. Includes three hours of Internet access per month.

**BULLETIN BOARDS** Hundreds of places on the Internet where you can read and leave messages on specific activities and interests.

**CHAT GROUPS** Places on the Internet where you can discuss subjects in real time with others who share your interests.

**DOLBY DIGITAL OUT** An optical digital output connects to an A/V receiver with built-in Dolby Digital decoder. Delivers superb 5.1-channel surround with digital surround sound quality, excellent channel separation and a high-impact Low Frequency Effects channel just for bass.

**E-MAIL** UltimateTV service enables you to send and receive messages from anyone with an Internet address.

**INTERACTIVE TV PROGRAMMING** This feature of UltimateTV service unites television and the Internet in a single, seamless interactive experience. Includes play-along TV game shows and links to TV-related websites.

**LOCAL CHANNELS** DIRECTV may offer the signals of CBS, NBC, ABC and FOX local affiliate stations, plus a PBS national feed into selected local markets.<sup>3</sup>

**MESSAGE INDICATOR** Lets you know that you have a new E-mail.

**MICROPHONE INPUT** Front panel input lets you create multimedia E-mails with the sound of your voice.

**MULTI-SWITCH** Supplied with the SAN-24MD1 antenna, this accessory enables one antenna to provide four output feeds. The SAT-W60 requires two feeds, leaving two more for other receivers. Each receiver can select and tune channels independently.

**MY SHOWS** UltimateTV menu for instant access to shows you've recorded.

**OPTICAL DIGITAL OUTPUT** Used for Dolby Digital out. An optical cable carries the digital signal as a beam of light, unaffected by electromagnetic and radio frequency interference.

**PAUSE LIVE TELEVISION** Pause live TV up to 30 minutes. Enables you to answer the phone and then return to a show where you left off.

**RECEIVES MULTI-SATELLITES** Can access programs from all three DIRECTV satellite orbitals: 101°, 110° and 119° West. Requires the proper dish, line of sight to the appropriate satellites, service availability and subscriptions.<sup>3</sup>

**RF INPUT** Accommodates a local TV broadcast antenna or cable.

**S-VIDEO OUTPUT** Achieves higher signal quality, with high resolution, crisp picture edges and clear color.

**TAPELESS RECORDING** The SAT-W60 records up to 35 hours of the DIRECTV digital bitstream onto a built-in hard disk drive.

**TV FAVORITES** Shows a personal list of DIRECTV® programming channels you've selected.

**TV REMIND** Alerts you when your pre-selected shows are coming on. Ideal for "appointment viewing."

**TV SEARCH** Feature that helps you browse the listings by categories like Horror, Drama or Western. Or use the supplied keyboard to search for shows by name.

**TWO SETS OF A/V OUTPUTS** One for your television. One for your A/V receiver.

**UNIVERSAL REMOTE CONTROL** Simplifies operation by also controlling many brands of television.<sup>4</sup>

**ULTIMATETV INTERNET ACCESS**

This service delivers web browsing, E-mail and interactive TV features to your television. The Basic UltimateTV subscription includes three hours of Internet access per month. Or you can opt for an UltimateTV service package with no time restrictions using either your existing Internet Service Provider or on WebTV Networks Internet provider (not including America Online®).

**VCR ONE-BUTTON RECORD** Enables you to record a show directly without programming the VCR. An infrared blaster will turn on your VCR, start and stop recording automatically.<sup>5</sup>

**WIRELESS KEYBOARD** The supplied infrared wireless keyboard makes it easy to compose E-mail and enter text.

1 Subscription to the UltimateTV Service and an analog telephone line are required. UltimateTV Service is a monthly subscription service. Subscription to UltimateTV® service and DIRECTV® programming required. DIRECTV® programming and UltimateTV service subscriptions sold separately. Monthly service fee required. UltimateTV service can only be received by US residents and is not available outside the US. Requires a monthly subscription to the UltimateTV service and is subject to acceptance to the terms of service upon registration. UltimateTV services are available as a local call in most areas. In some areas long distance telephone toll charges may apply. To check local access, call 1-877-ULTIMATE (1-877-858-4628).

2 Actual recording capacity depends on programming recorded.

3 With this receiver and the proper satellite dish antenna, you may be able to receive local channels from DIRECTV in certain areas. Additional equipment may be required in some areas.

4 Multi-brand remote: may not operate some brands or models.

5 One-Button Record may not operate some VCR brands or models.

6 For full dual tuner functionality, the DIRECTV receiver with UltimateTV should be connected to a dual-LNB dish antenna. Professional installation is recommended.

© 2001 Sony Electronics Inc. Reproduction in whole or in part without written permission is prohibited. All rights reserved. Features and specifications are subject to change without notice. Non-metric weights and measures are approximate. Sony, Home Entertainment Universe and Remote Commander are trademarks of Sony. America Online is a trademark of America Online, Inc. CINEMAX and HBO are registered trademarks of Time Warner Entertainment Company, L.P. DIRECTV is a registered trademark of DIRECTV, Inc., a unit of Hughes Electronics Corporation. Dolby Digital is a trademark of Dolby Laboratories licensing Corporation. SHOWTIME is a service mark of Showtime Network, Inc., a Viacom Company. Microsoft, UltimateTV, the UltimateTV logo, and WebPIP are either registered trademarks or trademarks of Microsoft Corporation in the US and/or other countries. All other trademarks are property of their respective owners.

**SONY®**

Sony Electronics Inc.  
1 Sony Drive, Park Ridge, NJ 07656  
www.sony.com  
www.sonymstyle.com