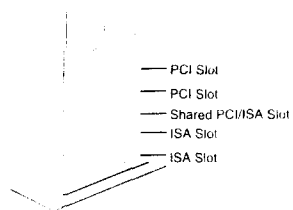


## Removing a Slot Cover

This information supplements the instructions for Inserting an Add-in Board on page 97 of the Sony PC User Guide.

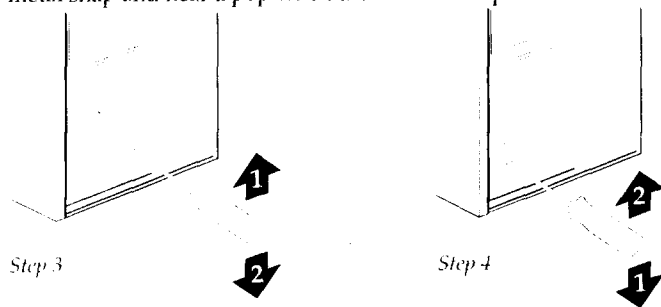
**⚠ WARNING** - The slot cover and slot opening may have sharp edges. To avoid injury, do not insert fingers into the slot opening.

- 1 Locate the correct slot cover.



- 2 From the rear of the system, insert a 3/16-in screw driver into the RIGHT hole in the slot cover.
- 3 Gently move the screw driver up and down. (You may also move the screw driver to the left and right.)

Repeat until the attachment point above the hole breaks free. (You will feel the metal snap and hear a pop when the attachment points break - this is normal.)



- 4 Move the screw driver to the LEFT hole in the slot cover. Move the screwdriver down first, then up. (You may also move the screw driver left and right.)  
Repeat until the two remaining attachment points break free.
- 5 Remove the slot cover when it breaks free.
- 6 Discard the slot cover.

## Sony PC (PCV-100/120) Supplement

### Playing Multiple Videos

Your Sony PC is equipped with 2MB of video RAM and it is possible to play more than one video simultaneously. You should be aware, however, that once a video is playing, the system resources available for running additional videos are reduced. Additional videos may not display the same level of quality that can be achieved when videos are played independently.

### Non-Plug and Play Monitors

If you are not using a plug and play monitor, some icons may not be visible on your screen the first time you use your Sony PC. This problem corrects itself when the computer is restarted. Click the Start button on the Windows Taskbar, select Shut Down, and restart your computer.

### Advanced Power Management

Your Sony PC supports Advanced Power Management (APM), allowing you to save energy during a period of inactivity. If you find that an application exhibits unexpected behavior (such as reduced video quality) after returning from a period of APM reduced power consumption, you may want to close that application before leaving your PC unattended.

### Volume Adjustments for Speakerphone Use

To avoid the intermittent loss of sound when using the speakerphone, you may need to adjust the location of the microphone and speakers. If you are using a monitor with built-in microphone and speakers, such as the Sony Multimedia Computer Display, turn down the speaker volume until the problem disappears.

### Composing or Receiving a Fax

The first time you compose or receive a fax, the Inbox Setup Wizard prompts you to enter information, such as your name and fax number. You are also asked to select the information services you want to use. To use only the fax capability, you can deselect all options except Microsoft® Fax. If you want to use any of the other information services (Microsoft Mail, Internet Mail, The Microsoft Network Online Service, Netscape Internet Transport), you should be prepared to enter the information required to access these services. After entering location information, you are prompted to select a fax modem. Select Modem Voice and Fax Line. You can then continue to enter information on the remaining screens of the Inbox Setup Wizard.

### Modem Software Upgrade

Prior to shipment, the modem software on your PC was upgraded to improve performance. If you run the modem diagnostics software, it will indicate a failure of the test for Modem file version. This happens because the diagnostics software is looking for an older version of the modem software.

## Using a VGA Monitor

The default display resolution for the Sony PC is 800 by 600 pixels. If you are using an older VGA monitor with display capability limited to 640 by 480 pixels, you will not be able to see the screen the first time you start your PC. You can correct this problem by reducing the resolution to 640 by 480 pixels. To change the resolution, follow these steps:

- 1 If your PC is already turned on, reboot by simultaneously pressing the CTRL+ALT+DEL keys. If your PC is off, turn it on.
- 2 When you see the words "Starting Windows 95 ..." on the screen, press the F8 key.
- 3 Press the F5 key to select safe mode.
- 4 When the safe mode window appears, click the OK button to accept safe mode.
- 5 On the Windows desktop, click the right mouse button and select Properties from the menu.
- 6 Select the Settings tab. Under Desktop area, reduce the area to 640 by 480 pixels, then click the OK button.
- 7 When the window appears informing you of the need to restart your PC, click the Yes button.

## Hard Drive Compression

Your Sony PC supports the latest File Allocation Table format (FAT32) for storing files on your hard drive. Microsoft Windows 95 includes a utility, DriveSpace, for compressing files on your hard drive. The current version of DriveSpace does not support the FAT32 format. If you attempt to use System Agent for compression of your hard drive, you will receive the error message "Drive C cannot be compressed because it is a FAT32 drive." If you install additional hard drives and wish to use the DriveSpace compression utility, the hard drives should be formatted with the FAT16 option.

## WOW! from CompuServe

The online service WOW! from CompuServe has been discontinued by CompuServe as of January 31, 1997. You may see references to WOW! on the Sony PC, for example, in the document "About the Online Services" in the Online Services folder. Please be aware that the service has been discontinued.

## Removing Oil Change

If you want to remove the Oil Change application, click the Start button on the task bar. Under Programs, select the Uninstall Oil Change option under CyberMedia Oil Change. Do not use the Add/Remove Programs utility in the Control Panel to remove the Oil Change application.

## Optimal TV Viewing

For optimal TV viewing, select the 640 x 480 resolution mode. The display area size cannot be adjusted for television viewing in the 800 x 600 resolution mode. The Sony PC is not designed to be used exclusively with a television in place of a computer display.

## Viewing Hard Disk Drive Properties

The Properties window for your hard disk drive displays information on free and used disk space. This information is displayed in both numeric and graphic formats. Refer to the numeric values for an accurate indication of the free and used disk space.

## Playing Games in MS-DOS Mode

When running sound intensive MS-DOS applications, such as games, you may find that the sound is distorted, especially at high volumes. You can improve the sound quality of an MS-DOS application by specifying that the PC operate in MS-DOS mode while running the application. Follow these steps:

- 1 Click the application icon with the right mouse button and select Properties from the menu.
- 2 Select the Program tab and click the Advanced button.
- 3 On the Advanced Program Settings screen, check "MS-DOS mode" and "Warn before entering MS-DOS mode," then click the OK button.
- 4 On the Program tab of the Properties screen, check "Close on exit," then click the OK button.

When you start the application, your PC will reboot in MS-DOS mode. When you exit the application, your PC will automatically reboot in Windows 95 mode.

## Using Quicken online access with America Online (AOL)

If you use AOL as your online service provider and wish to access online information through the Quicken application, follow these steps to set up your internet connection in Quicken:

- 1 In the Quicken application, point to the Online icon at the bottom of the screen and select Update My Quicken 6.
- 2 Click the Connection Setup button.
- 3 Click OK on the message that describes how to use Quicken with your existing browser.
- 4 On the Select the Internet connection screen, select the second option, "I want to use a direct Internet connection," then click the Next button.
- 5 On the Select a Web browser screen, select one of the available browsers listed, then click the Next button. You will not use the AOL browser to access Quicken online services.
- 6 On the Tell us about your Proxy Server screen, leave the Proxy Server field blank and leave the Proxy Port field value 0, then click the Next button.
- 7 On the Test drive your Internet connection screen, select "No, I don't want to test drive my Internet connection," then click the Next button.
- 8 On the Congratulations screen, click the Done button.

Whenever you wish to use online features of Quicken, you should first launch the AOL application and connect to AOL.