

SONY

STR-DA80/90ESG

DESCRIPTION: Dolby-Digital
Receiver

DIMENSIONS

(WHD): 17" x 6 1/4" x 17"

WEIGHT: 35 lbs 4 oz

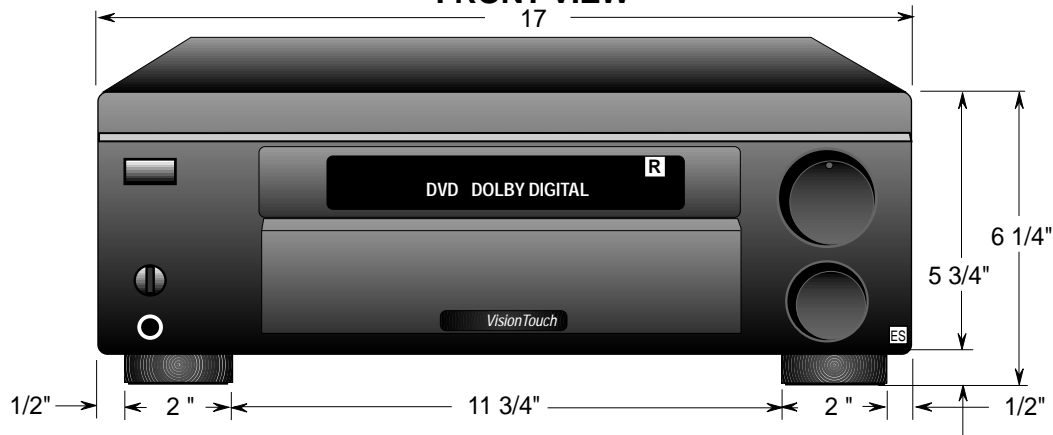
POWER
REQUIREMENTS 120V
60I

POWER

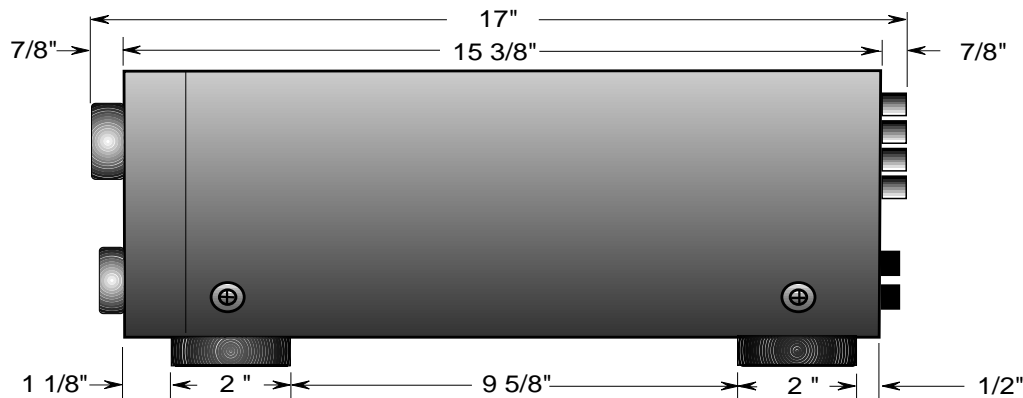
CONSUMPTION: 355
Watt

1/4 inch = 1 inch Scale 4:1

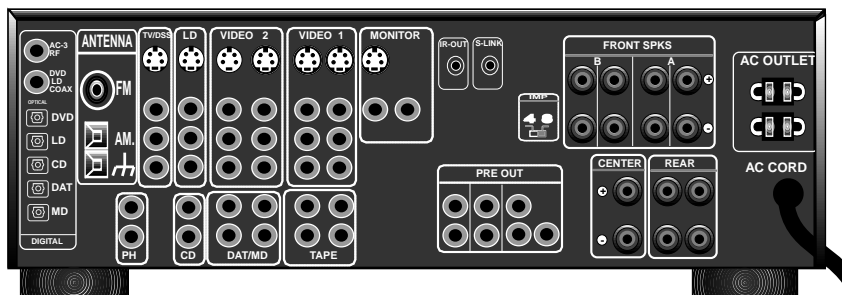
FRONT VIEW



SIDE VIEW



BACK VIEW



S-LINK ON STR-D90ESG ONLY!

**Contractor's
Notes:**