

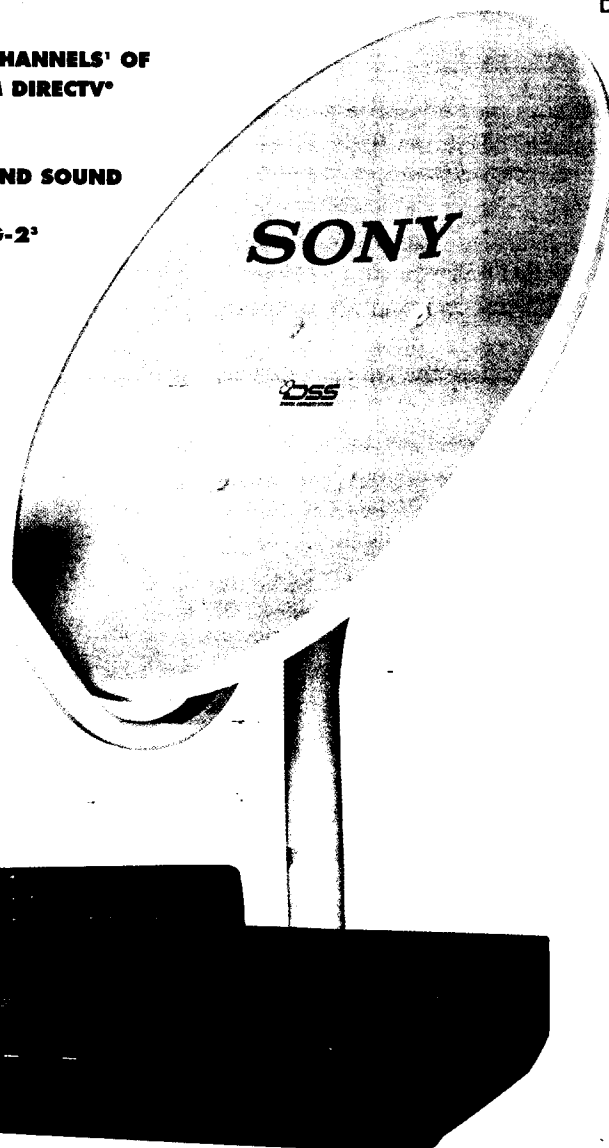
SONY

SAS-BS2

DIGITAL SATELLITE SYSTEM

**FEATURES AND
SPECIFICATIONS
SUBJECT TO CHANGE
WITHOUT NOTICE**

- **ONE BUTTON RECORD WITH VCR MOUSE**
- **ENHANCED EXPRESS NAVIGATOR™ WITH DIRECT TUNING™
ON-SCREEN MENU SYSTEM**
- **32 BIT MICROPROCESSOR**
- **SIGNALSEEKER™ FLASHING LED ON ANTENNA**
- **18 INCH SATELLITE ANTENNA WITH SINGLE OUTPUT LNB**
- **2 AUDIO/2 VIDEO OUTPUTS**
- **REMOTE COMMANDER* REMOTE CONTROL OPERATES SONY DIGITAL
SATELLITE RECEIVER PLUS MOST TV SETS, CABLE BOXES***
- **S-LINK™ CONTROLLER**
- **10-EVENT PROGRAMMABLE TIMER**
- **COMPATIBLE WITH MORE THAN 200 CHANNELS* OF
SATELLITE (DSS) BROADCASTING FROM DIRECTV*
AND USSB™**
- **DELIVERS DIGITAL-QUALITY PICTURE AND SOUND**
- **COMPATIBLE WITH MPEG-1 AND MPEG-2*
DIGITAL COMPRESSION**
- **ACCESS CARD
TECHNOLOGY FOR
PAY-PER-VIEW
ORDERING**



U.S. Satellite Broadcasting



SAS-BS2

Enjoy the world of DSS® entertainment with the brilliance of Sony engineering. The SAS-BS2 has what you need: including Satellite Antenna, Digital Satellite Receiver Access Card and Sony's Remote Commander® remote control. With the SAS-BS2, the picture and sound benefit from the latest digital advancements. While the operation benefits from Sony's sophisticated Enhanced Express Navigator™ on-screen menu system.

FEATURES

SAN-18S1 Antenna

- **ULTRA-SMALL, 18 INCH SINGLE-LNB ANTENNA** tiny compared to 10-foot C-band dishes—receives Ku-band transmission
- **FIXED POSITION** permanently points in one direction because all DSS satellites are located in the same orbit
- **SIGNALSEEKER™ LED** enables a single person to install. The LED flashes at 20 advancing speeds to indicate proximity of satellite signal. A final check with the signal-strength meter on the TV screen and the signal is locked
- **SINGLE LOW-NOISE BLOCK DOWN CONVERTER (LNB) OUTPUT**
- **ALUMINUM ANTENNA** is light and prevents rust
- **ROUND LNB ARM MINIMIZES SNOW BUILD-UP** to maintain signal quality in winter
- **AERODYNAMIC DESIGN**
- **FEWER SUBASSEMBLIES** for easier installation
- **SUPERIOR CABLE MANAGEMENT** lets you connect a signal meter without disassembling the antenna

SAT-B2 Receiver

- **COMPATIBLE WITH DIGITAL SATELLITE SYSTEM™ (DSS®) BROADCASTS** on the Ku-band, originating from three Hughes high-power 120-watt geostationary satellites
- **COMPATIBLE WITH MPEG-1 AND MPEG-2³** digital compression; MPEG combines multiple channels and high picture and audio quality
- **CD-QUALITY AUDIO SOUND TRACKS** bring an added dimension to movies, sports and music
- **32-BIT MICROPROCESSOR** for fast on-screen menu operation that's up to 5 times faster than other DSS brands

- **10-EVENT PROGRAMMABLE TIMER** lets you program the Sony Brand DSS receiver to turn on, select the channel and automatically turn off the unit, so you can record shows on your VCR even when you're not home
- **ONE BUTTON RECORD** with VCR Mouse (RM-VM101) lets you highlight a future program in any one of the Guides or Lists and set it to record. The VCR Mouse can control most brands of VCR's⁴ to start and stop timer recording
- **TWO SETS OF AUDIO/VIDEO OUTPUTS**, one for your television set, the second for your audio/video system
- **S-VIDEO OUTPUT** for higher picture quality when connecting to your TV
- **EASY PAY-PER-VIEW ORDERING** with DSS® Access Card; billing information automatically goes out over your telephone line
- **ACCESS CARD SLOT HIDDEN BEHIND DOOR** for added security
- **SONY S-LINK™** lets you hide the Receiver and operate it through the infrared window of compatible Sony TVs
- **LOW POWER CONSUMPTION, COOL OPERATION** make the Receiver suitable for mounting in a cabinet
- **CONVENTIONAL ANTENNA INPUT** and switch accommodate cable TV or off-air antenna to deliver local programming
- **16 x 9 WIDESCREEN CAPABILITY** for future widescreen programs and television sets
- **15-PIN WIDEBAND DATA PORT** for future applications
- **MESSAGE INDICATOR** is clearly identified

RM-Y129 Remote Control

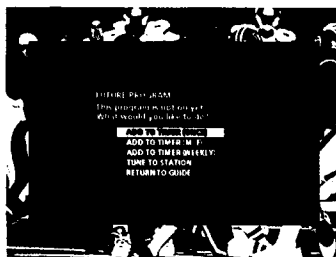
- **REMOTE COMMANDER® REMOTE CONTROL** also operates many brands of television sets and cable converter boxes²
- **LED INDICATORS FOR TV, DSS AND CABLE** indicate the device the remote control is operating

On-Screen Menus

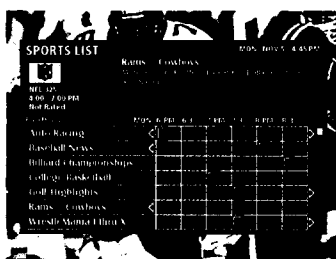
The Enhanced Express Navigator™ With Direct Tuning™ System

With more than 200 available channels to watch, how do you choose just one? Very easily, thanks to Sony's Enhanced Express Navigator on-screen menu system. The Express Navigator screens get you to your station in a way that's intuitive, interactive, flexible and fast. *Intuitive* because you just point and click on the selections you want. *Interactive* because the current channel's picture and sound continue, even when the displays are on the screen. *Flexible*, because you can create menus and color choices to your liking. And *fast* because Sony's system operates with the superior speed of a powerful, 32-bit microprocessor. Sony's Enhanced Express Navigator on-screen menu system. Once you try it, you'll never consider anything less.

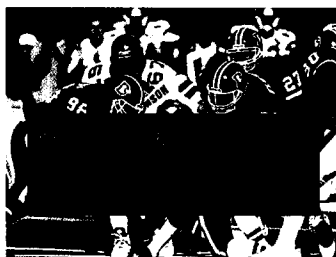
- **DIRECT TUNING™** takes you directly from the channel guides to your selected program, with a minimum of keystrokes
- **DISPLAY OPTIONS MENU:** Choose among 8-colors for your backgrounds. Choose among 3 levels of transparency for menus—solid, medium, or light. Choose your channels to be ordered numerically or alphabetically. Choose your jump channel mode for either 2 channels or a jump loop up to 5 channels
- **CURRENT CHANNEL PICTURE AND SOUND** continue even when using the on-screen menu system
- **SIMPLE, 4-BUTTON CURSOR CONTROL** with centrally-mounted Select button lets you make choices directly from the Express Navigator menu system; cursor buttons on main unit and Remote Commander® remote control
- **MASTER GUIDE** displays a "program grid" of channels and times in three formats and gives a detailed description of the highlighted program
- **CATEGORY GUIDES** display choices by type of programming, including Sports, Music and Movies, plus sub-categories like Westerns and Comedies
- **FAVORITE STATION GUIDE** to set 5 individual guides with 7 stations each with access direct from remote
- **STATION INDEX** with program names
- **CUSTOM GUIDE** lets you delete rarely-used channels from the Up/Down scanning sequence
- **CHANNEL BANNER** shows comprehensive program information and then fades away
- **BUILT-IN DIAGNOSTICS** for testing antenna, Access Card and telephone hookup
- **MAXIMUM SIGNAL STRENGTH METER** indicates best reception attained



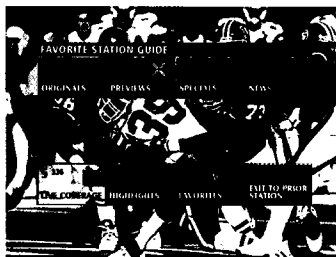
ONE BUTTON RECORD allows you to highlight any future shows on the menus and push select. Sony's 10-EVENT/30-DAY TIMER will automatically turn on the receiver at the right time & tune the right channel, while Sony's VCR mouse switches on your VCR*, activates, records and shuts everything down at program's end



SPORTS LIST shows you all the sports programming available. For example, you select the sport you want (Football, Basketball, Hockey, etc) and you'll get an alphabetical listing of the games being broadcast during the upcoming 6 hours



STATION INDEX shows 21 channels at a glance. You can scroll through more than 200 channels in just a few clicks — fast enough to locate the program of your choice in seconds



FAVORITE STATION GUIDE can display 5 screens of your favorite channels to select — each showing up to 7 of the channels you watch most frequently

SPECIFICATIONS

ANTENNA TYPE: 18" x 21" Parabolic, Fixed mount

LNB INPUT FREQUENCY: 12.2-12.7GHz

LNB FEED: Circular

LNB OUTPUT JACK: "F" type female coaxial

LNB OUTPUT/RECEIVER INPUT FREQUENCY: 950-1450MHz

LNB OUTPUT/RECEIVER INPUT POLARITY: Dual

RECEIVER SATELLITE INPUT JACK: "F" type female coaxial

RECEIVER ANTENNA INPUT JACK: "F" type female coaxial

RF OUTPUT: "F" type female coaxial

VIDEO OUTPUT: Phono type (2)

AUDIO OUTPUT: L/R phono type (2 pairs)

S-VIDEO OUTPUT: 4-pin mini DIN

S-LINK: CONTROL S INPUT: Rear panel minijack

CONTROL S OUTPUT: Rear panel minijack

WIDEBAND DATA INTERFACE: 15-pin D-Sub connector

TELEPHONE INTERFACE: RJ-11C modular jack

POWER REQUIREMENTS: 120V AC, 60Hz

POWER CONSUMPTION: 23W, maximum

DIMENSIONS (WHD): Receiver: 17" x 3 1/4" x 10 7/8" (430 x 82 x 275mm)

Antenna: 18 3/8" x 22 3/8" x 22 7/8" (468 x 569 x 581mm)

including mounting arm and LNB arm

WEIGHT: Receiver: 5 lbs 6 oz (2.56kg)

Antenna: 7 lbs 1 oz (3.2kg)

SUPPLIED ACCESSORIES: RM-Y129 Remote Commander Remote Control

with 2 AA batteries

Audio and video connecting cords

RF Remote Antenna

RM-VM101 VCR Mouse

Telephone line cord

Coaxial cable with F connectors

Instruction Manual

Access Card

OPTIONAL ACCESSORIES: ANJ-DS1 Installation Kit

EAC-DA1 In-Line Amplifier

EAC-DD1 Diplexer

EAC-DV1 Voltage Switch

RM-Y130 RF Universal Remote Commander Remote Control

SAK-F1 Flat Cable

SAK-C25 25' Coaxial Cable

SAK-C75 75' Coaxial Cable

MRD-D1 Multi Room Distribution System

EAC-T1 IR Target

©1996 Sony Electronics Inc.

Reproduction in whole or in part without written permission is prohibited. All rights reserved.

On-screen menus are simulated.

Sony, Direct Tuning, Express Navigator, Remote Commander, Sony Maximum Television, S-Link, and SignalSeeker are trademarks of Sony. DIRECTV and DSS are official trademarks of DIRECTV, Inc., a unit of Hughes Electronics Corporation. USSB is an official servicemark of United States Satellite Broadcasting, Inc.

Features and specifications subject to change without notice. Non-metric weights and measures are approximate.

¹ More than 200 Channels: Based on total available capacity of all 3 Hughes DSS Satellites.

² Multi-Brand Remote: May not be compatible with some brands or models.

³ MPEG-2: The unit contains MPEG-1 and MPEG-2 data compression decoders and will be fully operational with MPEG-2 when the encoders are equipped with MPEG-2 technology.

⁴ VCR Mouse may not be compatible with some brands or models.

SONY

Sony Electronics Inc.
1 Sony Drive
Park Ridge, New Jersey 07656
<http://www.sony.com>

Printed in USA 8/96