

UPA-PC110 PictureStation UPA-V31KIT, Version 3100 Restore Instructions

Objectives:

- Restore Operating System v3100
- Perform Touch screen Calibration
- Update Terminal Software to v3102
- Update Printer Firmware to v2.21
- Verify Operation and Training

The procedure described within this document can only be performed by an authorized Sony Representative

Introduction

Note the following:

The image shows the bottom of a Sony VAIO laptop. A white label at the top left reads "Windows® 2000 Professional 12 CPU" and "Product Key: G3CT8-4L3P8-ND3CH-988F3-J9733". Below this is a barcode and the number "00019 034 149 161". To the right is a "SONY DPF SYSTEM CONTROLLER" label with "MODEL: LPA-PC100", "ID: 70042", and "100-120V~ 50/60Hz 1.3A". Below these labels is a large circular ventilation grille. At the bottom right is a "RUIITSU KIDEN LTD. KDD01041-B973 B-STOCK" label. A white arrow points from the text "bottom of the laptop" to the bottom edge of the device.

Serial Number

Product Key:				
12345-12345-12345-12345-12345				

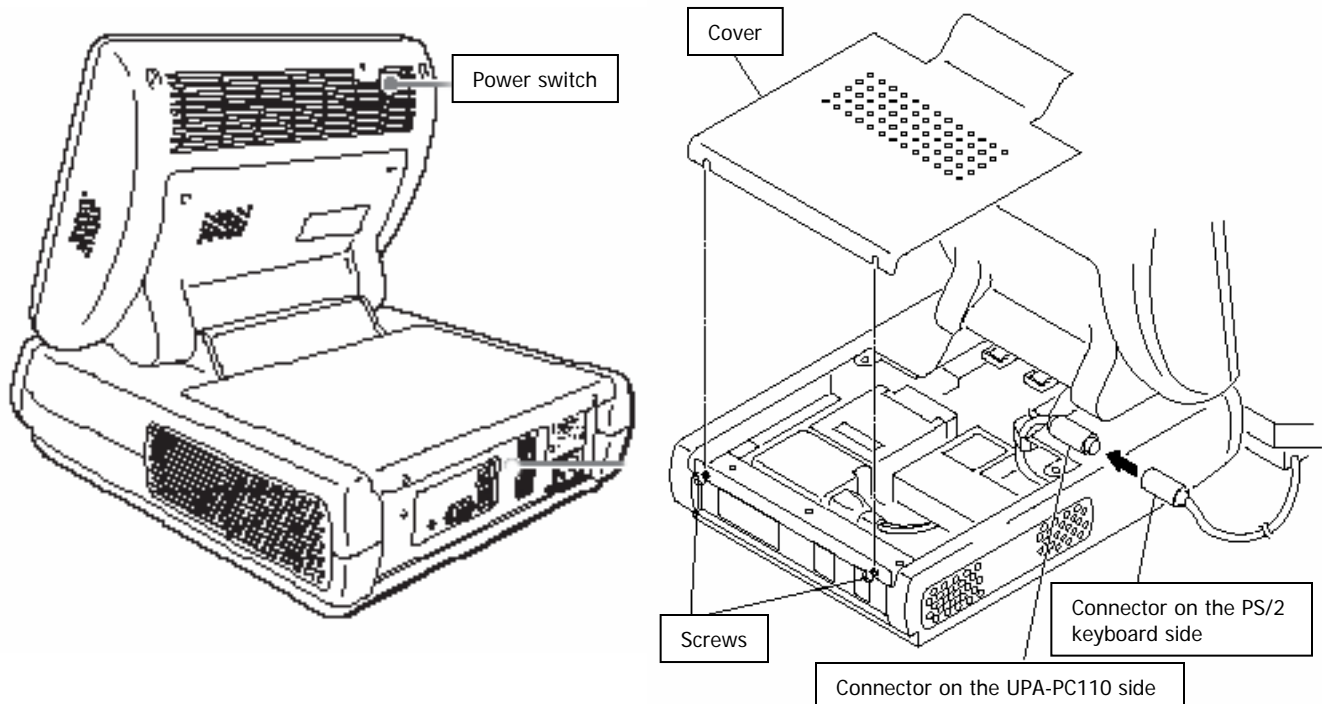


2

Start

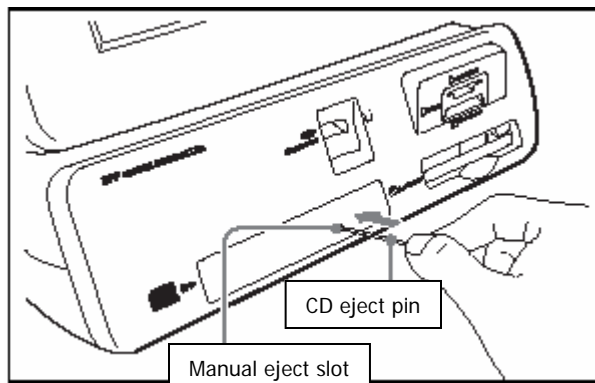
Connection of PS/2 Keyboard

1. Power off the UPAPC110.
1. Loosen the two screws at the rear of the UPAPC110 base and remove the cover.
2. Connect the UPAPC110 internal keyboard connector to a PS/2 keyboard.



Inserting the Restore CD (Disc 1)

1. Insert the CD eject tool into the slot on the front of the CD Tray.
2. Press Restore Disc 1 into the open tray and close the tray.

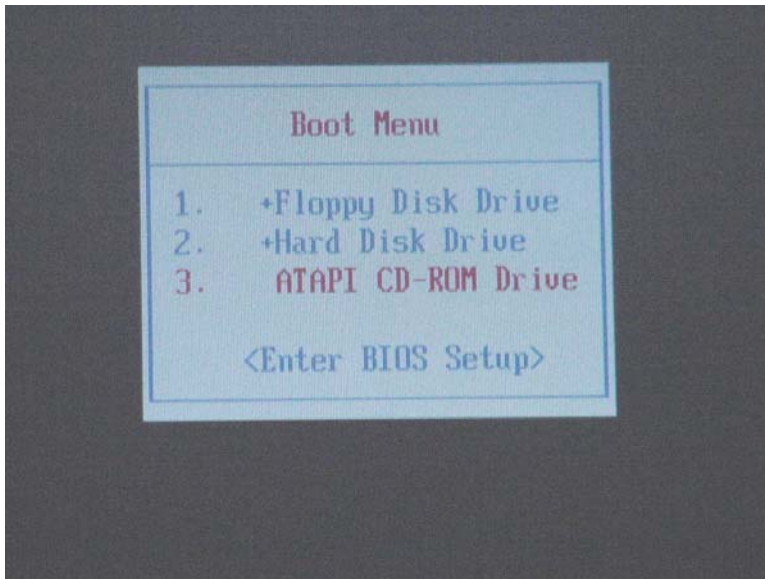


Performing the System Restore

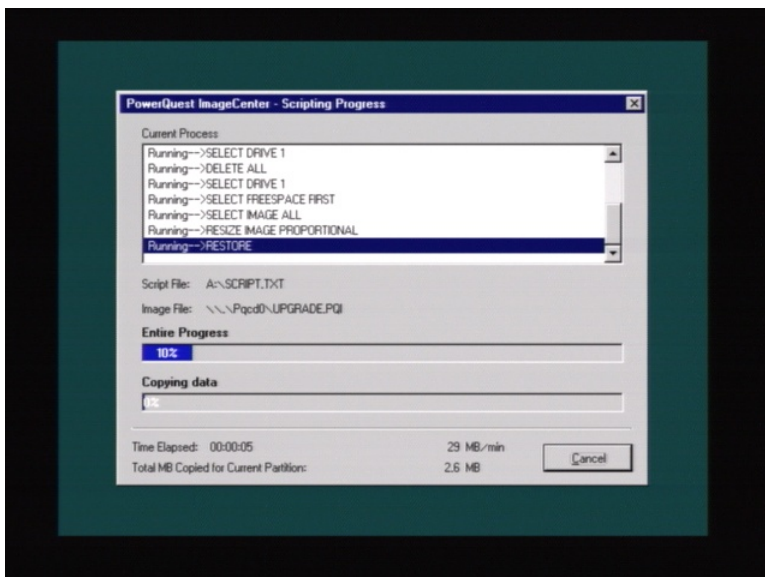
Note: The Touch screen is inactive during this process.

1. With Restore Disc 1 in the CD Tray, Power on the PC110.
2. As soon as the first screen appears, press **F12** on the keyboard repeatedly until the following Boot Menu screen appears. Restart the terminal if Windows begins to boot and try again.
3. Use the Down arrow to highlight **3. ATAPI CD-ROM Drive** and press the **Enter** key.

Booting from Restore Disc1 in the CD-ROM drive



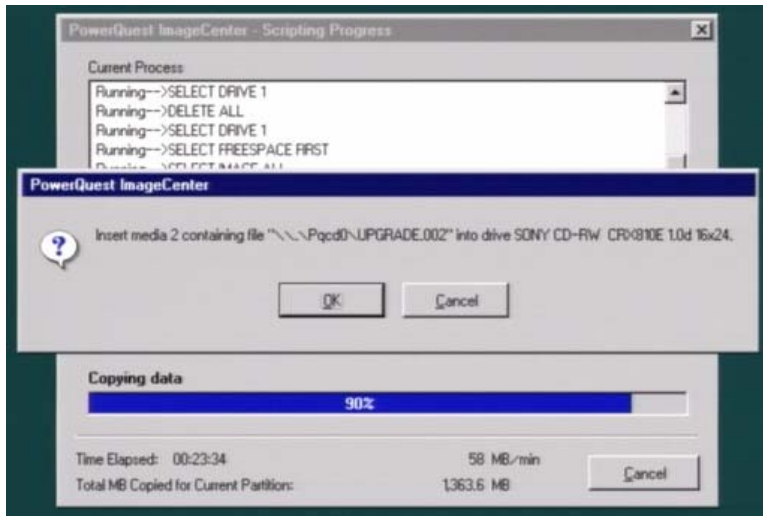
Restore starts automatically



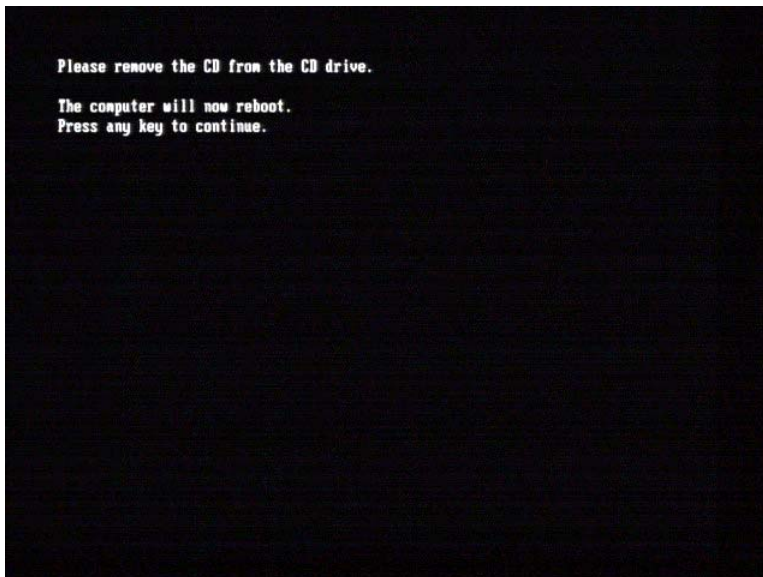
Time to complete Disc 1 is approximately 25 minutes.

Performing the System Restore Continued:

1. When prompted, remove Disc 1 and insert Disc 2.
2. Press the **ENTER** key on the keyboard to continue.



1. When the Disc 2 restore is complete, the CD tray will open.
2. When prompted, remove Disc 2 and press the **Enter** key to reboot.



Time to complete Disc 2 is approximately 7 minutes.
If the process appears to go too quickly (less than 1 minute)
Restart the Restore Process.

Performing the System Restore Continued.

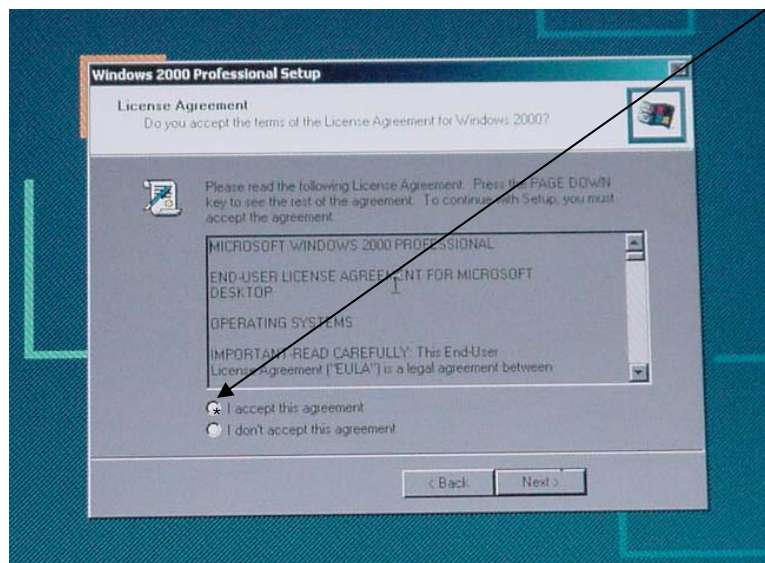
Windows Operating System Setup

1. After boot up, Welcome to the Windows 2000 Setup Wizard display will appear.
2. Press the **Enter** key to continue with Setup.



License Agreement

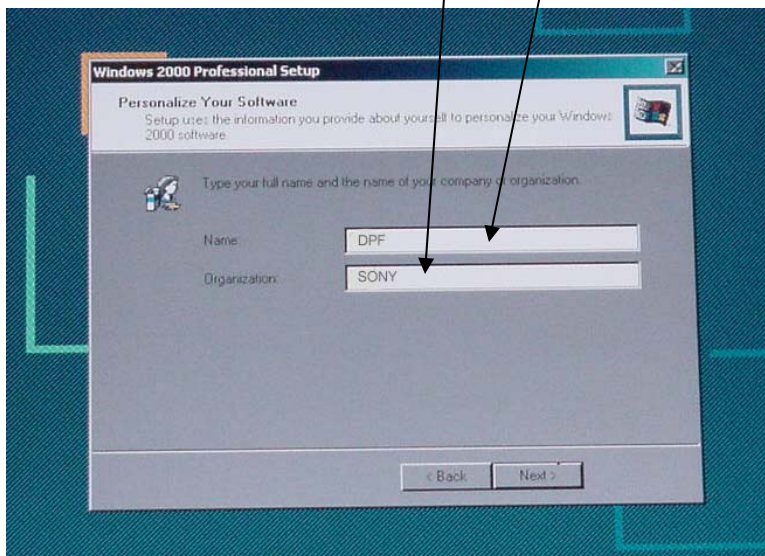
Using the keyboard, press the **Tab** and **Arrow** keys several times to highlight the **[I accept this agreement]**. Press the **Space** bar to select it, then press the **Enter** key.



Performing the System Restore Continued

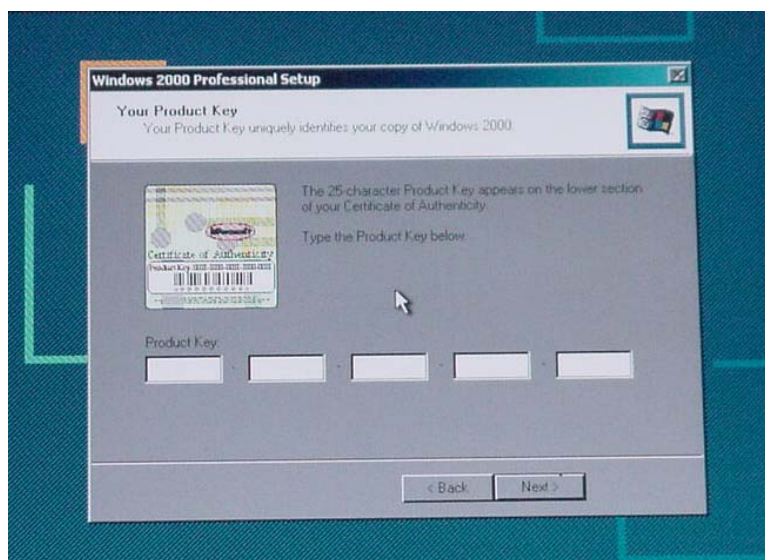
When the Personalize Your Software display appears:

1. Press the **Caps Lock** key.
2. Type **[DPF]** in the Name box, then press the **Tab** key.
3. Type **[SONY]** in the Organization box.
4. Press the **Enter** key to continue.



Your Product Key

1. Type in the Alphanumeric **Product key** recorded earlier.
2. Press the **Enter** key to continue.



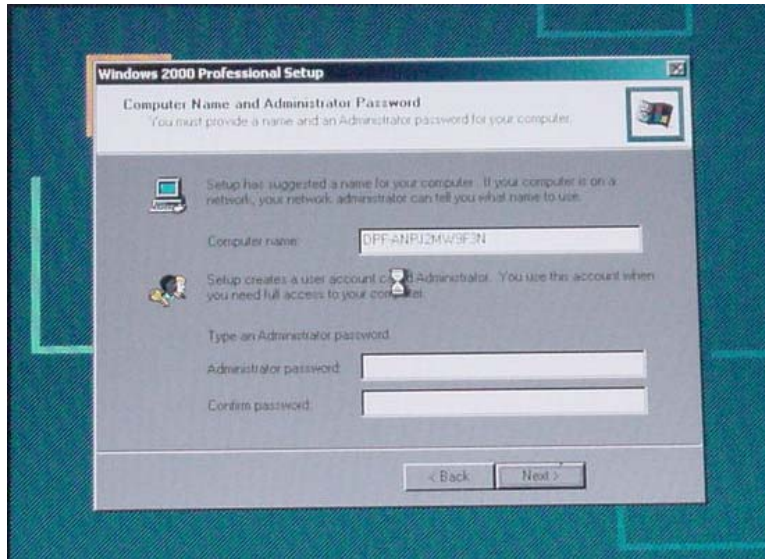
Note:
The system will prompt you if the wrong Product key is entered.

Performing the System Restore Continued

When the Computer Name and Administrator Password display appears:

1. Press the **TAB** key on the keyboard several times to highlight the **Next** button.
2. Press the **ENTER** key to continue.

CAUTION: DO NOT CHANGE THE DEFAULT COMPUTER NAME LISTED.



When the Log On to Windows display appears:

1. Type in the password [dpfsc] and press the **Enter** key.



Note:
Wait a moment for it to continue.
System will reboot.

Performing the System Restore Continued

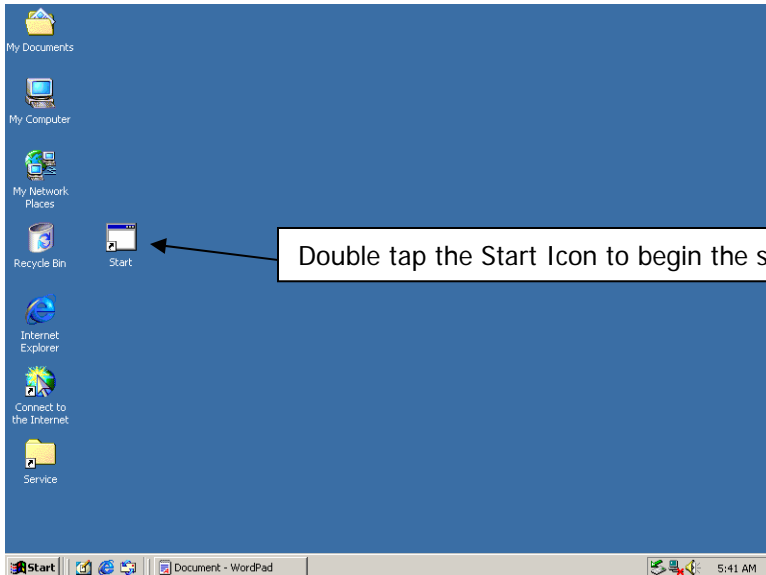
At the Windows Desktop:

Once started, the system will follow a script to automatically configure the operating system and will **reboot itself a total of 3 times**. Note that there is a minute of idle time between each automatic restart.

Double tap the **start** icon to begin the script after "found new hardware" drivers have been loaded.

Once started, **DO NOT TOUCH THE SCREEN!**

Touching the screen will interrupt the restore process and require you to start over!



Double tap the **start** icon to begin the script after "found new hardware" drivers have been loaded.

Select **No** if prompted to reboot!

ONCE STARTED, DO NOT TOUCH THE SCREEN!

The terminal will beep when the process is finished. Note that the system will restart a total of three times and will take 15 minutes to complete.

The system will shutdown and remain off at the completion of this process.



EasyRestore License Label

Once the Restore is complete, place the Easy Restore license label as shown on page two.

Disconnect the PS/2 keyboard and reinstall the cover.

Proceed to the Touch Panel Calibration.

Touch Screen Calibration

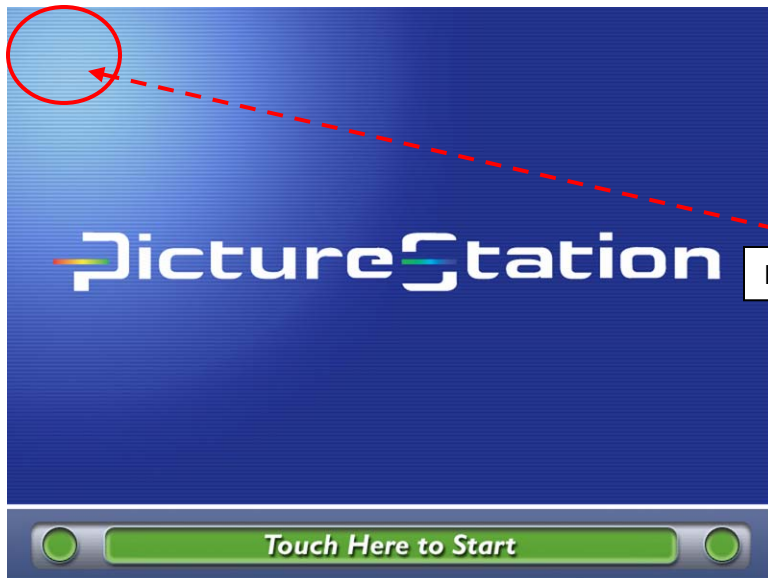
After performing a restore, the Touch Screen will have to be recalibrated.

To begin, power on the UPAPC110. If prompted for language selection, select American.

It may take a few tries to activate the password screen.

Be patient and try within a two inch area of the top left corner of the screen.

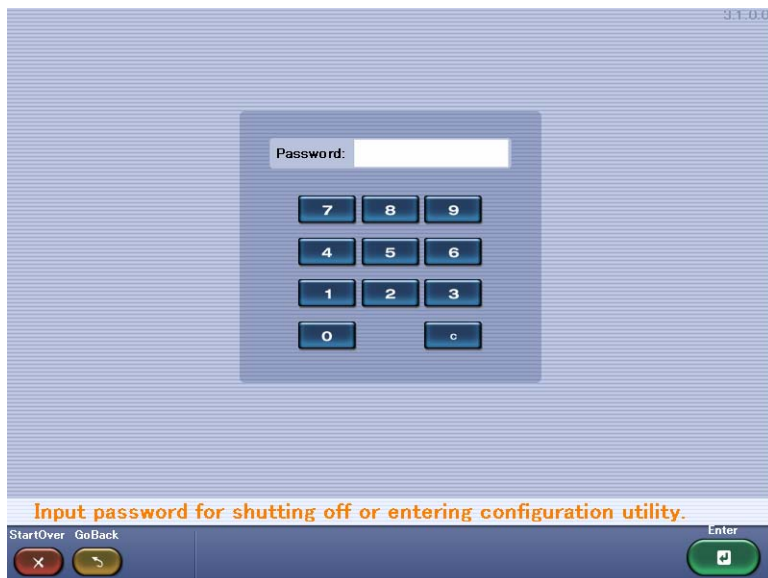
If the application starts, simply touch **Start Over** to return to the Picture Station startup display



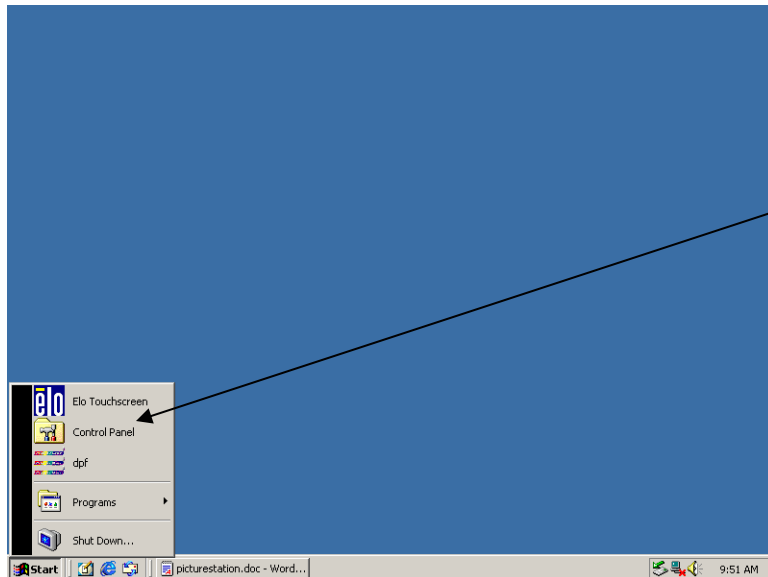
Double tap the top left corner of the screen.

Password Screen.

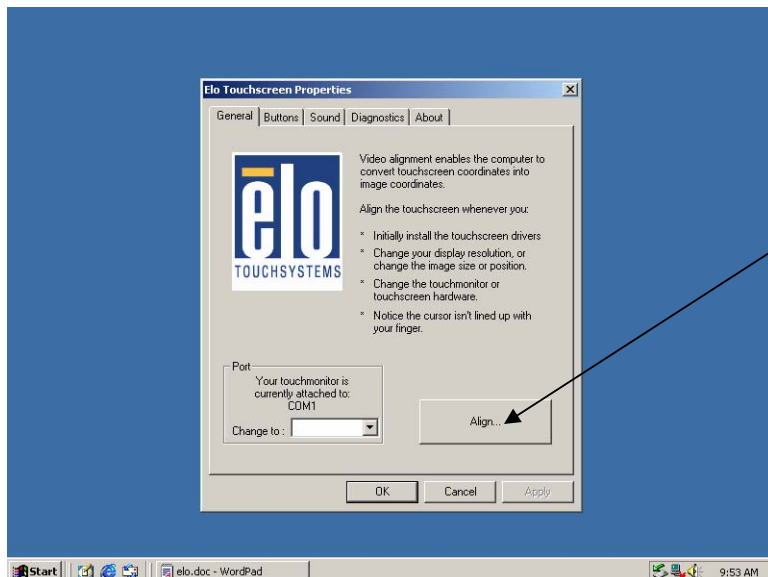
Type **[120100]** at the password input screen to go to the Windows Desktop Screen.



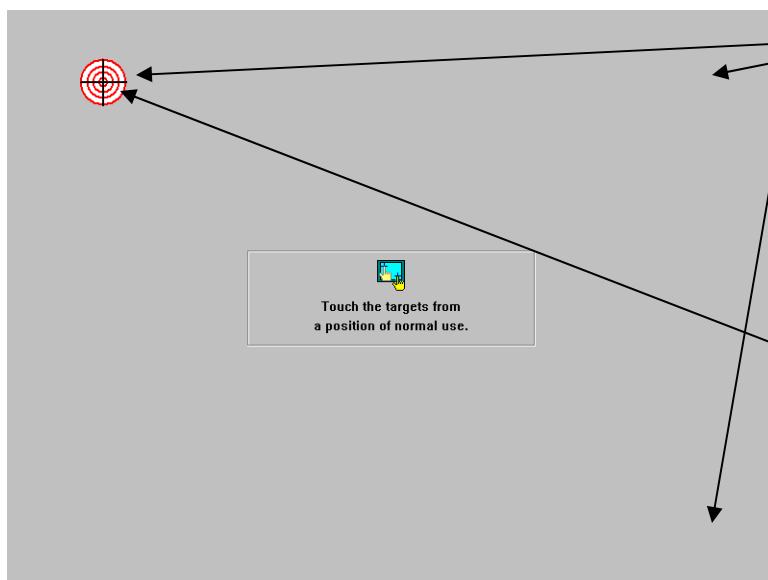
Touch Screen Calibration Continued



Touch the **[Start]** button at bottom taskbar, then select **[ELO Touchscreen]**.



Touch the **[Align]** button on the **[General]** tab.

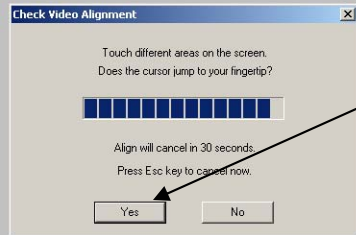


Facing the screen from a normal operator's position, touch the target mark displayed at all three points, as accurately as possible to set the calibration.

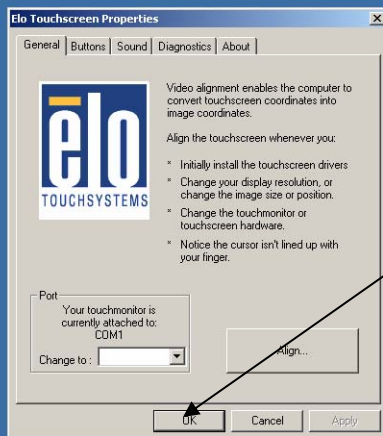
Tip 1:
Use your fingertip or a pencil eraser to touch the center of the target.

Tip 2:
Touch the area of the target that is closest To the center of the monitor.

Touch Screen Calibration Continued



A confirmation message appears. Touch several points on the screen to verify position accuracy. Recalibrate if necessary. Touch **Yes** to confirm.



Touch the **OK** tab to exit.



Touch the **[Start]** button at the bottom taskbar, and then touch **[Shut Down]** to power off the system. Proceed to the v3102 update.

UPDR100 v2.21 Printer Update

Input Device **Output Option**

MEMORY STICK	<input type="checkbox"/> ON	3.5x5	<input type="checkbox"/> OFF
CD-ROM	<input type="checkbox"/> ON	4x6	<input type="checkbox"/> ON
COMPACT FLASH	<input type="checkbox"/> ON	5x7	<input type="checkbox"/> ON
SMART MEDIA	<input type="checkbox"/> ON	6x8	<input type="checkbox"/> OFF
PC CARD	<input type="checkbox"/> ON	8x10/8x12	<input type="checkbox"/> ON
FLOPPY DISK	<input type="checkbox"/>		
SCANNER	<input type="checkbox"/>		
PHOTO LIBRARY	<input type="checkbox"/>		

Select updates.

Media | Picture | Pricing | System | Receipt | Hardware | Other

Return to the Administration Screen, select **Update** then **Printer** to start the printer update.

Input Device **Output Option**

MEMORY STICK	<input type="checkbox"/> ON	3.5x5	<input type="checkbox"/> OFF
CD-ROM	<input type="checkbox"/> ON	4x6	<input type="checkbox"/> ON
COMPACT FLASH	<input type="checkbox"/> ON	5x7	<input type="checkbox"/> ON
SMART MEDIA	<input type="checkbox"/> ON	6x8	<input type="checkbox"/> OFF
PC CARD	<input type="checkbox"/> ON	8x10/8x12	<input type="checkbox"/> ON
FLOPPY DISK	<input type="checkbox"/>		
SCANNER	<input type="checkbox"/>		
PHOTO LIBRARY	<input type="checkbox"/>		

Update the Printer Firmware?

ID 1: UP-DR100 2.03 -E 2.21

Media | Picture | Pricing | System | Receipt | Hardware | Other

Touch **Yes** to continue with the Printer Update.

Please wait

Please wait is displayed.

Note: The following notices will appear on the UPDR100 display.

NOW VERSION UP
WRITING!

VERUP FINISH
PLEASE REBOOT!

Note: all attached UPDR100 printers
Will be updated automatically.

UPDR100 V2.21 Printer Update Continued.

Input Device		Output Option	
MEMORY STICK	<input type="checkbox"/> ON	3.5x5	<input type="checkbox"/> OFF
CD-ROM	<input type="checkbox"/> ON	4x6	<input type="checkbox"/> ON
COMPACT FLASH	<input type="checkbox"/> ON	5x7	<input type="checkbox"/> ON
SMART MEDIA	<input type="checkbox"/> ON	6x8	<input type="checkbox"/> OFF
PC CARD	<input type="checkbox"/> ON	8x10/8x12	<input type="checkbox"/> ON
FLOPPY DISK	<input type="checkbox"/>		
SCANNER	<input type="checkbox"/>		
PHOTO LIBRARY	<input type="checkbox"/>		

Reboot each updated printer.
Press Shutdown button to power off terminal.
Then power terminal back on for normal operation.

OK

Media	Picture	Pricing	System	Receipt	Hardware	Other
-------	---------	---------	--------	---------	----------	-------

Cancel Job	Logs	Shutdown	Exit Admin
Diagnostic	Update	Import	Copy Settings

When prompted, turn the power off for for 10 seconds then back on for each UPDR100 printer attached.

Input Device		Output Option	
MEMORY STICK	<input type="checkbox"/> ON	3.5x5	<input type="checkbox"/> OFF
CD-ROM	<input type="checkbox"/> ON	4x6	<input type="checkbox"/> ON
COMPACT FLASH	<input type="checkbox"/> ON	5x7	<input type="checkbox"/> ON
SMART MEDIA	<input type="checkbox"/> ON	6x8	<input type="checkbox"/> OFF
PC CARD	<input type="checkbox"/> ON	8x10/8x12	<input type="checkbox"/> ON
FLOPPY DISK	<input type="checkbox"/> ON	Snapshots	<input type="checkbox"/> ON
SCANNER	<input type="checkbox"/> OFF	Wallets	<input type="checkbox"/> ON
		Index	<input type="checkbox"/> ON
PHOTO LIBRARY	<input type="checkbox"/> OFF	CD Creation	<input type="checkbox"/> ON
		Creative Photos	<input type="checkbox"/> ON

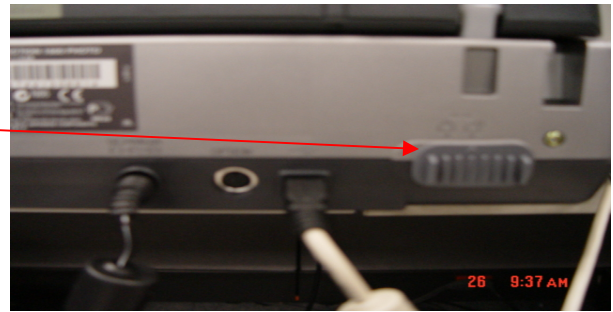
Media	Picture	Pricing	System	Receipt	Hardware	Other
-------	---------	---------	--------	---------	----------	-------

Cancel Job	Logs	Shutdown	Exit Admin
Diagnostic	Update	Import	Copy Settings

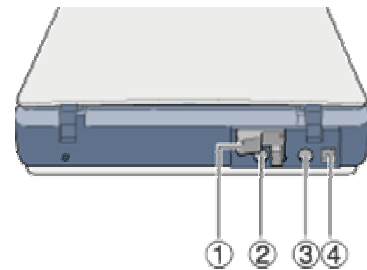
Touch the **Shutdown** button to power down the UPAPC105.
Proceed to the verify operation.

UPAPC110 Verify V3102 Operation: Connect Scanner

Unpack the scanner.
Unlock the transportation latch.

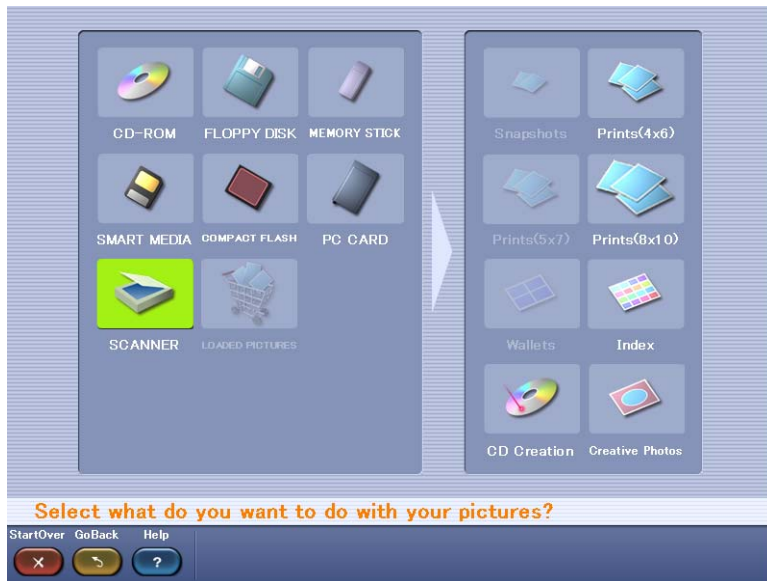


Note that the UPAPC110 should be powered down.
Using the supplied USB cable, connect one end to the USB port on the back of the **UPA-PC110** and connect the other to the scanner **(4)**. Locate the supplied Power Supply brick and connect it to the scanner **(2)**.

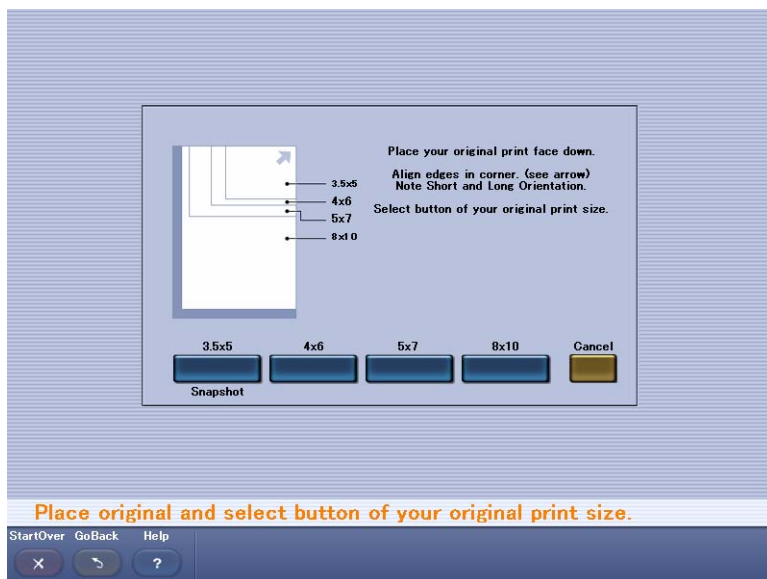


Before powering the UPAPC110 back on; verify that all peripheral devices are connected and powered on:
Scanner, Receipt Printer and a Roll Printers.
Note: There is no power switch on the scanner

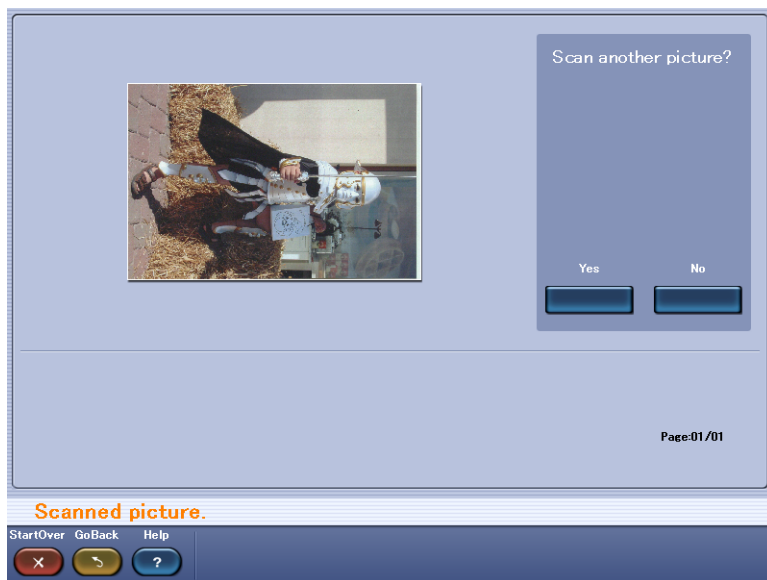
UPAPC110 Verify V3102 Operation : Scanner Test.



To test the scanner, touch the **SCANNER** button, then the print size (for example: 4x6).



Place the original on the scanner glass then select the size of the original (for example: 4x6).



After scanning, proceed to the checkout Screen to print (password 1111).
Proceed to the Post Installation Checklist.