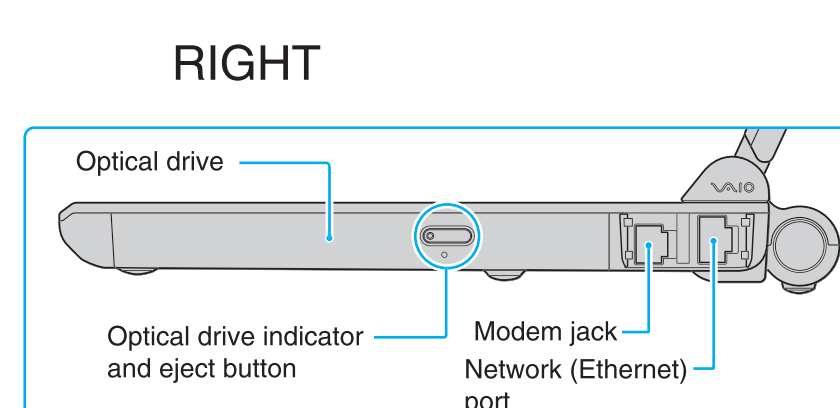
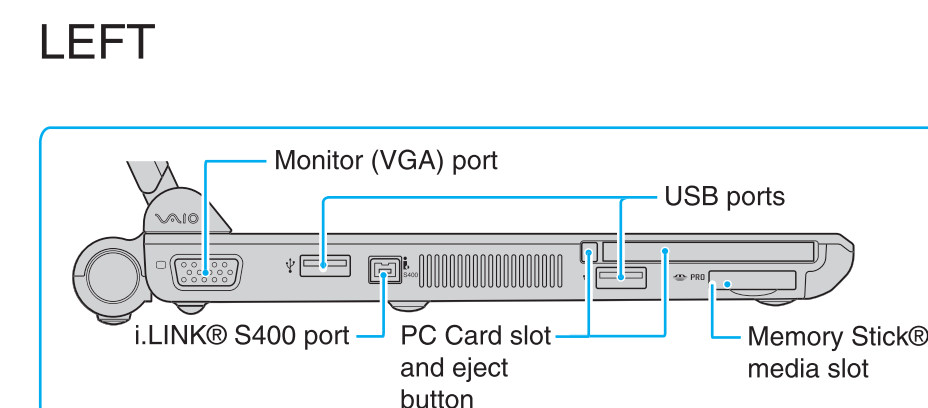
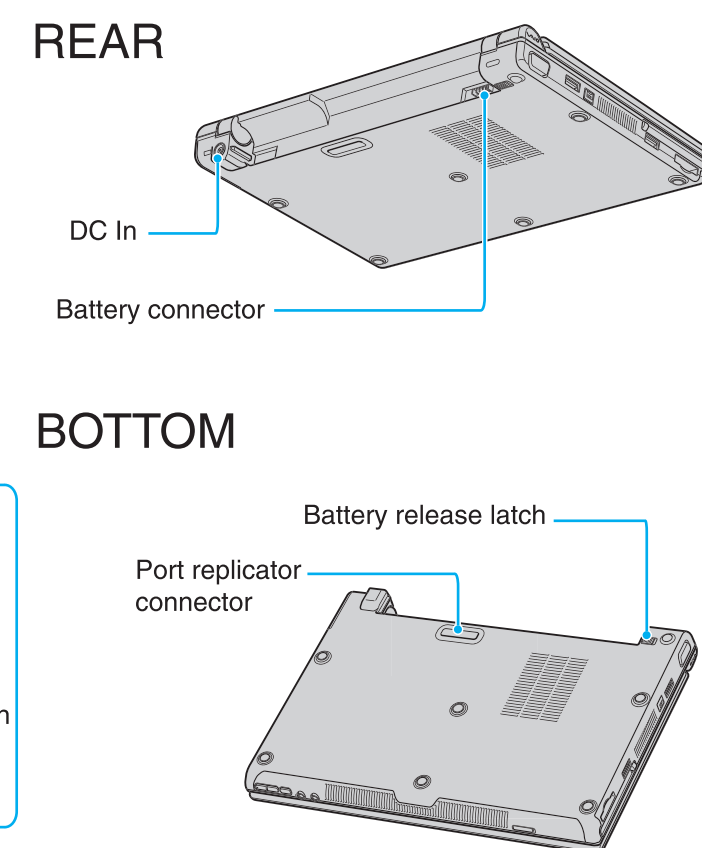
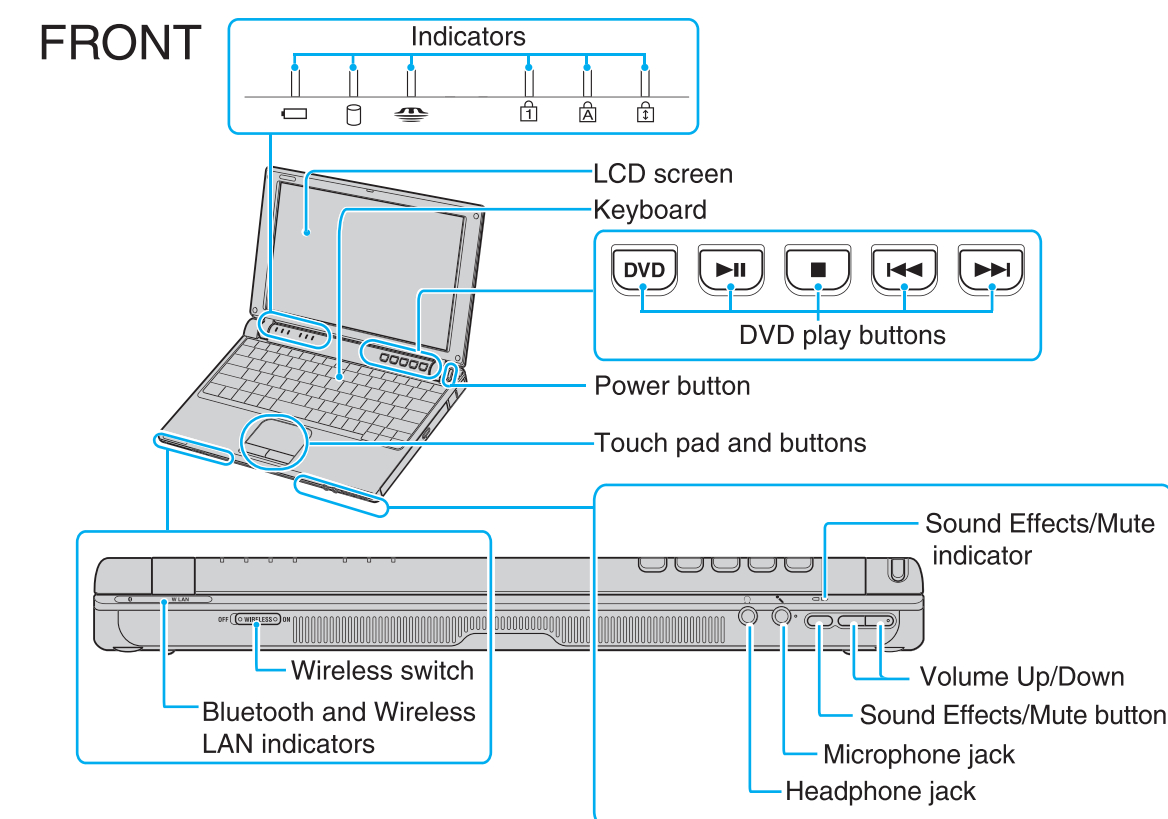
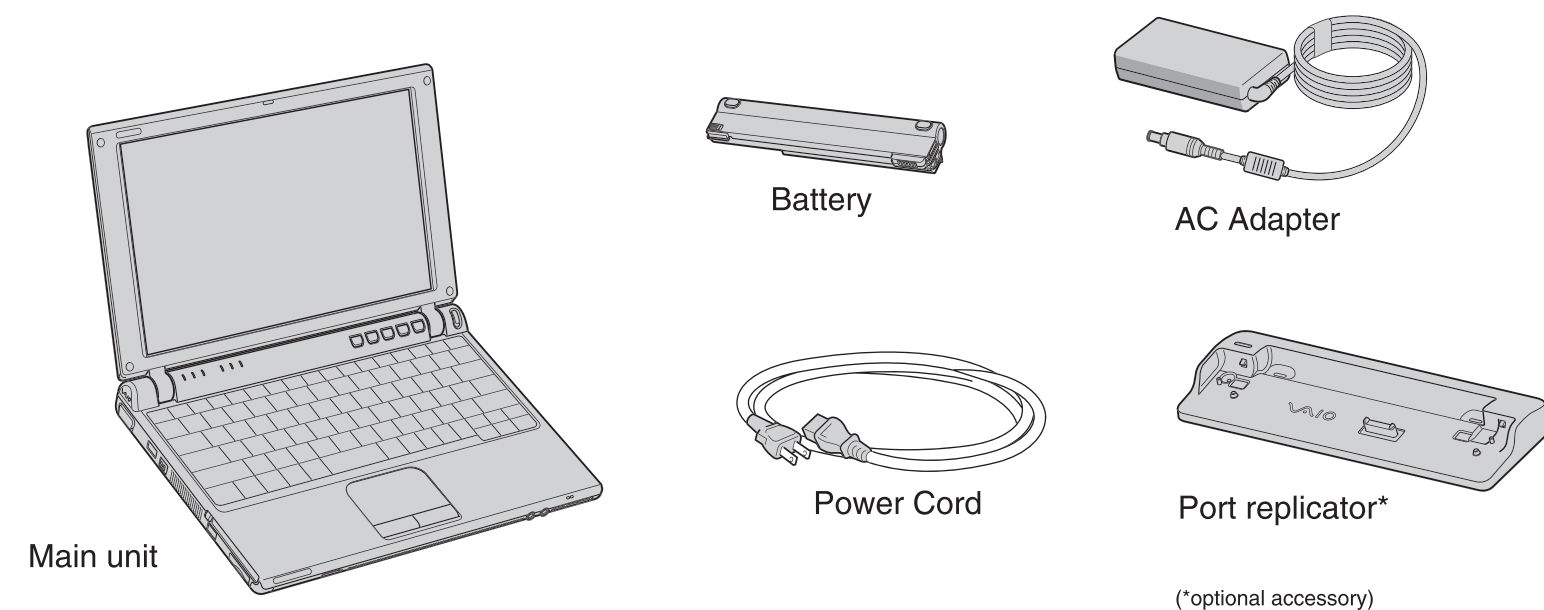




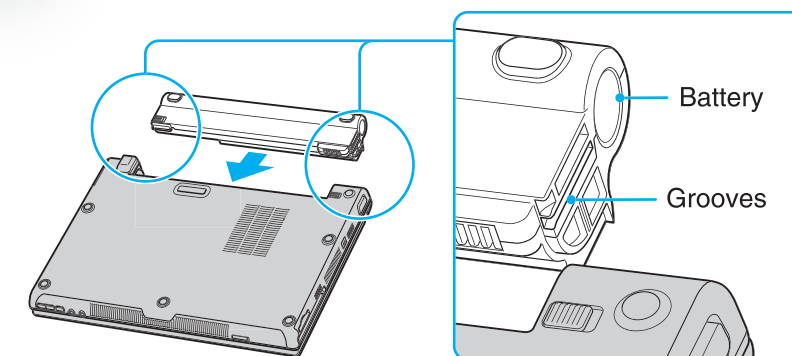
Meet your **VGN-T200** series personal computer

Thank you for purchasing a Sony VAIO® computer! Your new computer is a superb blend of high technology and easy-to-use functionality. The information provided here is designed to help you to become familiar with your computer.



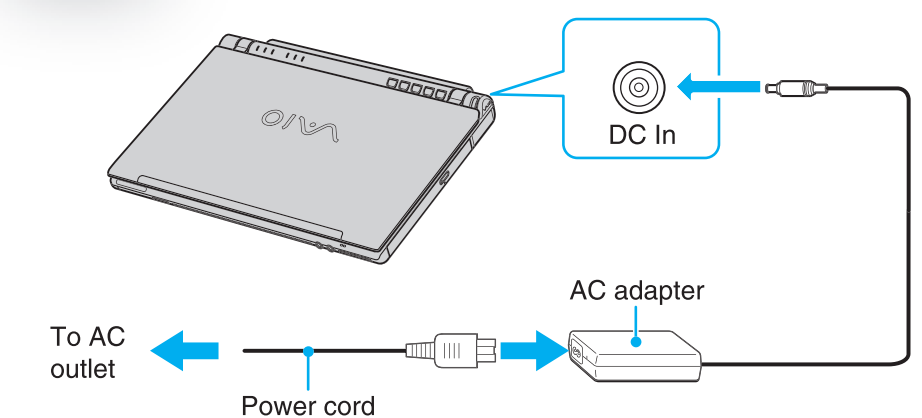
2-586-764-01 © 2005 Sony Electronics Inc. All rights reserved. Printed in Japan.

1 Battery



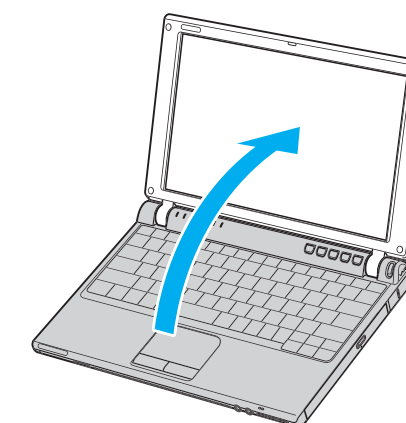
- 1 Align the grooves on the battery with the tabs on the back of the computer, and slide in the battery until it clicks into place.
- 2 The RELEASE latches on the battery and computer will click into position.

2 Connect AC



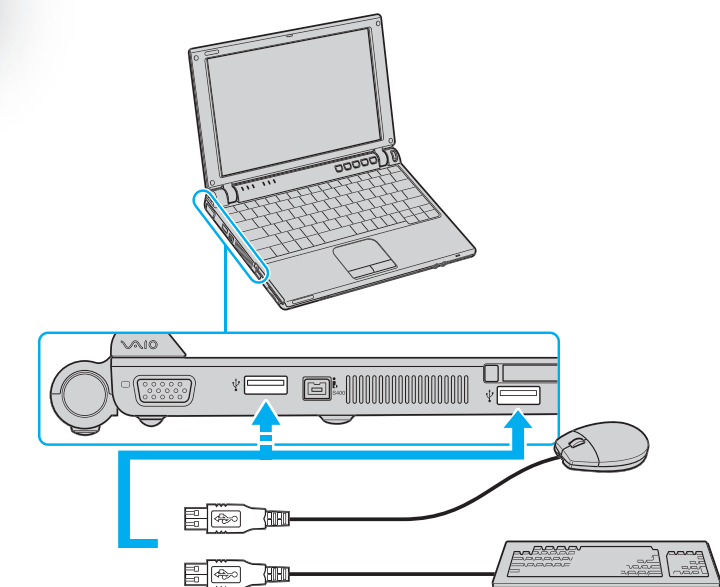
- 1 Plug the AC adapter cable into the DC IN port.
- 2 Plug the power cord into the AC adapter and an AC outlet.

3 Opening the lid



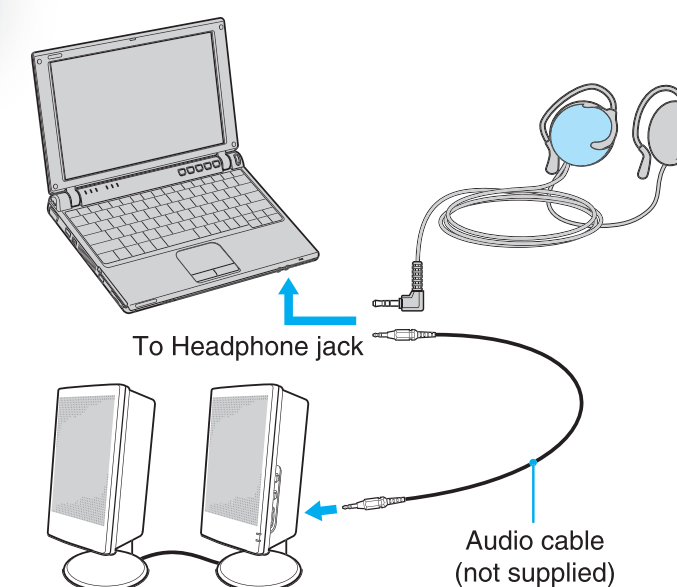
- 1 Hold the bottom of the computer firmly with one hand while you lift the LCD screen lid with the other hand.

4 Keyboard & Mouse



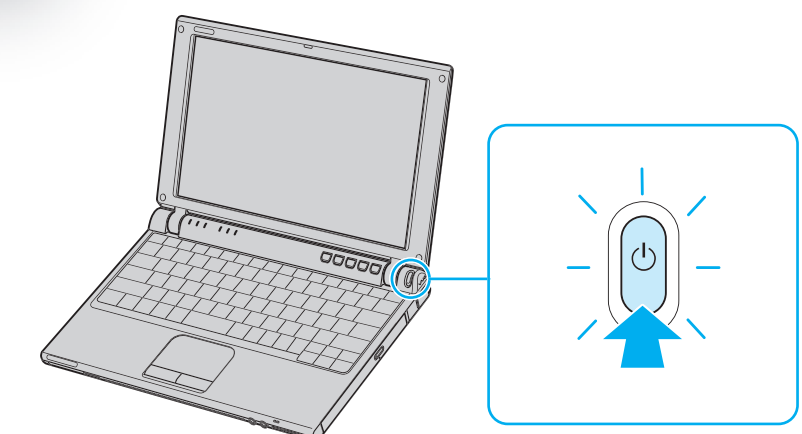
*Mouse / keyboard available separately.

5 Speakers or Headphones



*Speakers / headphones available separately.

6 Power On



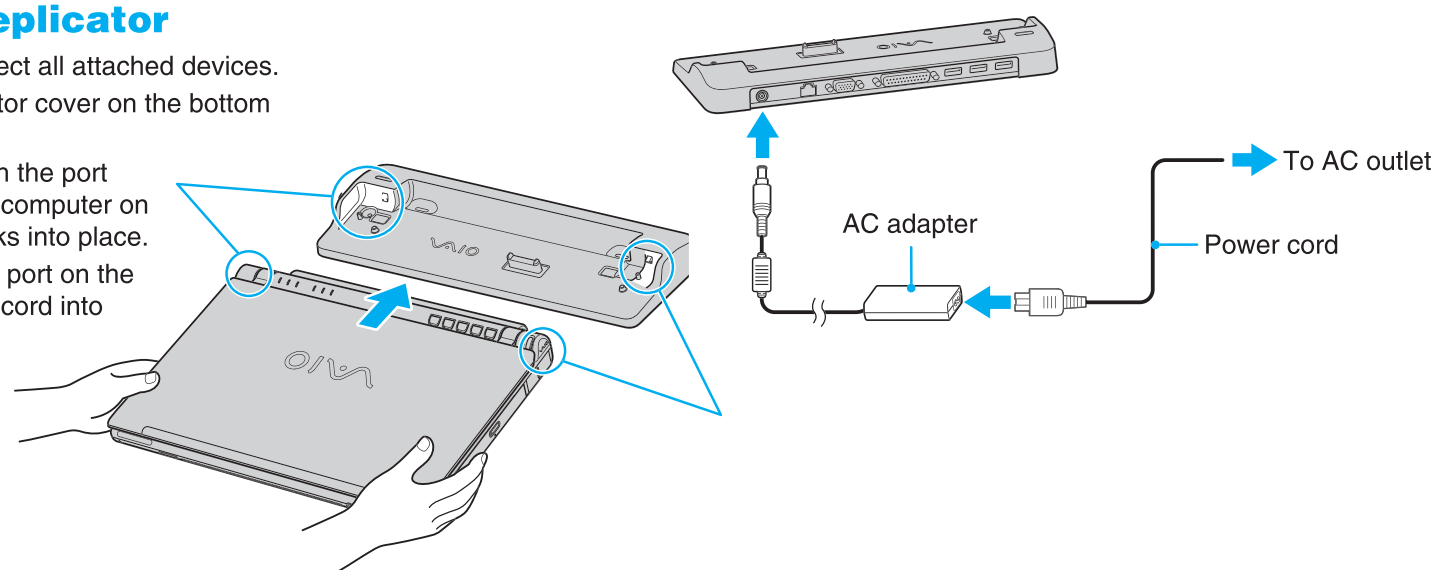
- 1 Press the power button until the power indicator turns on.



Connecting a Port replicator

To connect the port replicator

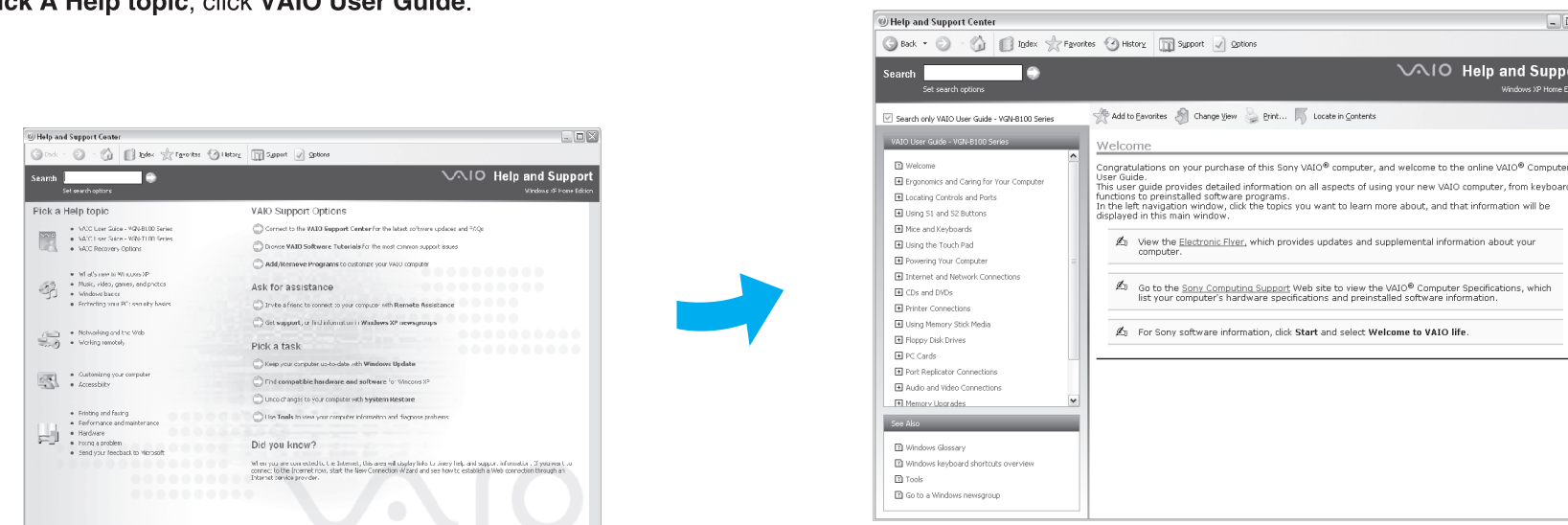
- 1 Turn off the computer and disconnect all attached devices.
- 2 Remove the port replicator connector cover on the bottom of the computer.
- 3 Align the sides of the computer with the port replicator's sidewalls, and place the computer on top of the port replicator until it clicks into place.
- 4 Plug the AC adapter into the DC In port on the port replicator, and plug the power cord into the AC adapter and an AC outlet.



Locate the User Guide

The online VAIO® Computer User Guide offers you more valuable information about your new computer. Once your computer is up and running, you can find the guide by following these instructions.

- 1 Click **Start > VAIO Help and Support**.
- 2 Under **Pick A Help topic**, click **VAIO User Guide**.

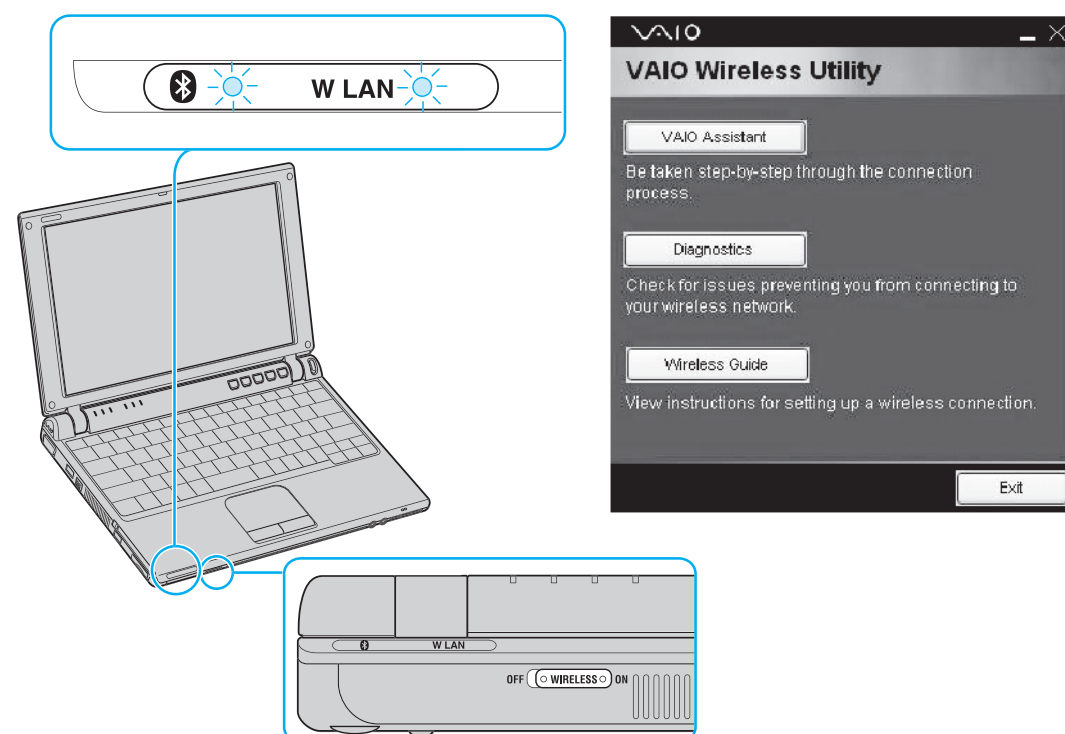


Using Wireless

A wireless local area network (LAN) is a network in which you can connect through a wireless (radio) connection. You can opt to purchase a Sony Wireless LAN Access Point to set up a LAN.

Connecting to a wireless network

- 1 Make sure an access point is set up. (See the instructions that accompanied the access point.)
- 2 Move the Wireless switch to ON.
- 3 Select the **Enable Wireless LAN** option in the Wireless Device Switch window, and click **OK**.
- 4 Click **Start > All Programs > VAIO Wireless Utility**.
- 5 Follow the steps provided by the VAIO Wireless Utility.



What do I do if my computer stops responding?

Although unsaved files may be lost, it is best to turn off your computer by following these steps:

Click **Start > Turn Off Computer > Turn Off**.

Alternatively, you may follow one or more of these suggestions to turn off the computer:

- Press the Ctrl+Alt+Delete keys simultaneously. Select the **Shut Down** menu, and click **Turn Off**. This option is particularly useful if your computer stops responding while you are playing a CD or DVD.
- Press and hold the power button until the computer turns off.
- Disconnect the AC adapter and remove the battery.

What do I do if my computer won't start?

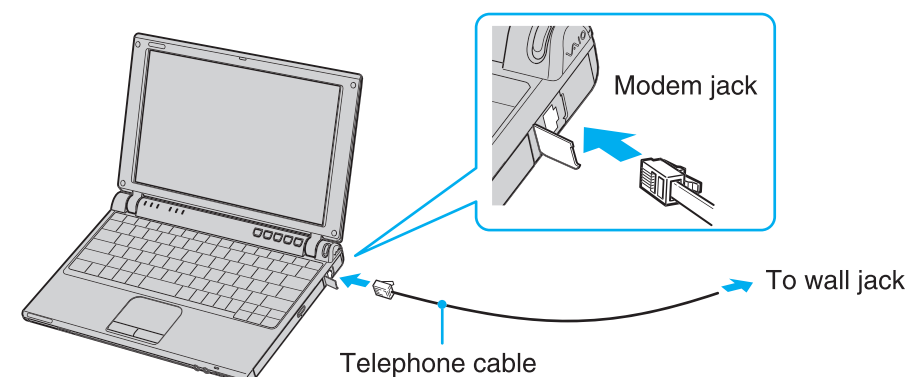
The power indicator on the computer is off when the computer is not securely attached to a source of power. Make sure the computer is plugged into the AC adapter and the adapter is plugged into an outlet. If you are using battery power, make sure the battery is inserted properly and charged. You may check the power source by disconnecting the AC adapter and removing the battery. Wait one minute before reattaching the AC adapter and reinserting the battery. Additional suggestions include:

- If the computer is plugged into a power strip or uninterruptible power supply (UPS), make sure the power strip or UPS is turned on and working.
- If your computer is connected to an external display, such as a multimedia monitor, make sure the display is plugged into a power source and turned on. The brightness and contrast controls may need to be adjusted. See the guide that came with your display for more details.
- If the computer is starting from a floppy disk, eject the disk from the floppy disk drive (if applicable).
- If you notice condensation on the computer, do not use the computer for at least one hour. Condensation may cause the computer to malfunction.

Connecting to the Internet

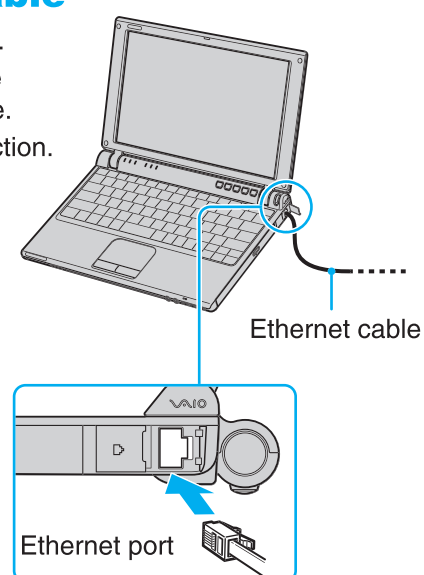
To connect a telephone cable

- 1 Locate the Modem jack on your computer.
- 2 Plug one end of the telephone cable into the Modem jack. Make sure it clicks into place.
- 3 Plug the other end into the wall jack.



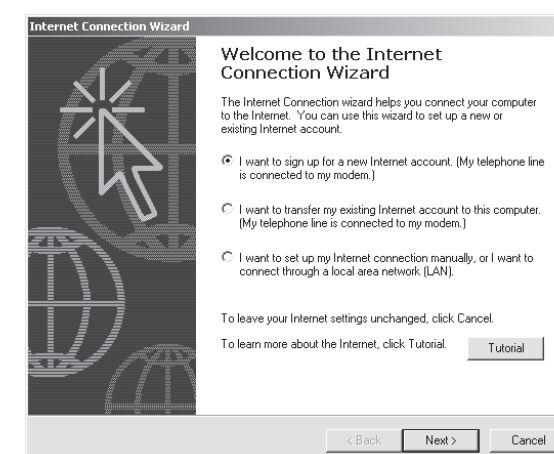
To connect an Ethernet cable

- 1 Locate the Ethernet port on your computer.
- 2 Plug one end of the Ethernet cable into the Ethernet port. Make sure it clicks into place.
- 3 Plug the other end into the network connection.



To set up an Internet connection

- 1 Click **Start > All Programs > Accessories > Communications > New Connection Wizard**.
- 2 Click **Next**.
- 3 If it is not already selected, click **Connect to the Internet**.
- 4 Click **Next**.
- 5 Follow the on-screen instructions.



To register your computer

You are prompted to register your computer the first time you turn on the unit. Follow the on-screen instructions to complete the registration process. If you are not able to register your computer during the first session, you are provided with additional registration opportunities later. You can also register your computer online at <http://www.sony.com/vaioregistration>. (Sony product registration is voluntary; failure to register will not diminish your limited warranty rights.)

Take advantage of Sony's commitment to quality customer support and receive these benefits by registering your computer:

Sony Customer Support — Talk to a support representative to troubleshoot problems you may have with your computer.

Product Information Notification — By giving Sony your contact information, you will enable Sony to reach you regarding performance updates and upgrades.

Refer to the following Web sites for additional information about your computer.

- <http://www.vaio.net>
- <http://www.sonymstyle.com>
- <http://www.sony.com/pcsupport>