

# MDR-84/94

## SERVICE MANUAL

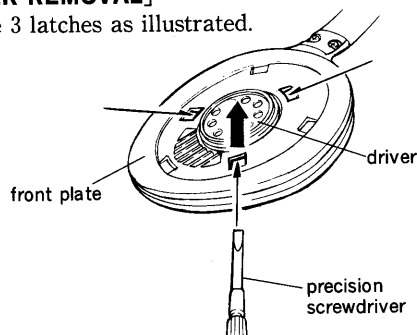
### SPECIFICATIONS

Type: Dynamic open-air type  
Driver units: 30mm dia., dome type CCAW (MDR-84)  
40mm dia., dome type CCAW (MDR-94)  
Impedance: 24 ohms at 1 kHz (MDR-84)  
63 ohms at 1 kHz (MDR-94)  
Sensitivity: 107 dB/mW (MDR-84)  
108 dB/mW (MDR-94)  
Rated power: 40 mW  
Power handling capacity: 100 mW  
Frequency response: 10-24,000 Hz (MDR-84)  
5-25,000 Hz (MDR-94)  
Cord: Approx. 2m long OFC litz cord with a gold-plated stereo unimatch plug (MDR-84)  
Approx. 3m long LC-OFC litz cord with a gold-plated stereo unimatch plug (MDR-94)  
Weight: Approx. 100 g (without cord) (MDR-84)  
Approx. 110 g (without cord) (MDR-94)

Design and specifications subject to change without notice.

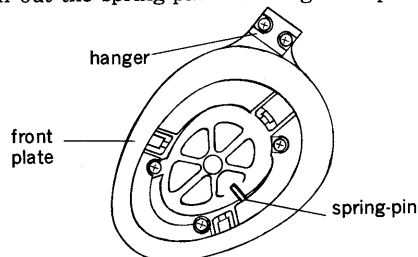
### 1. DISASSEMBLY [DRIVER REMOVAL]

Remove 3 latches as illustrated.



### [HANGER REMOVAL]

1. Pull out the spring-pin with long nose pliers.



2. Remove the hanger in the direction of arrows.

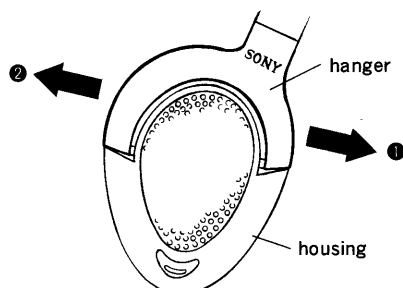
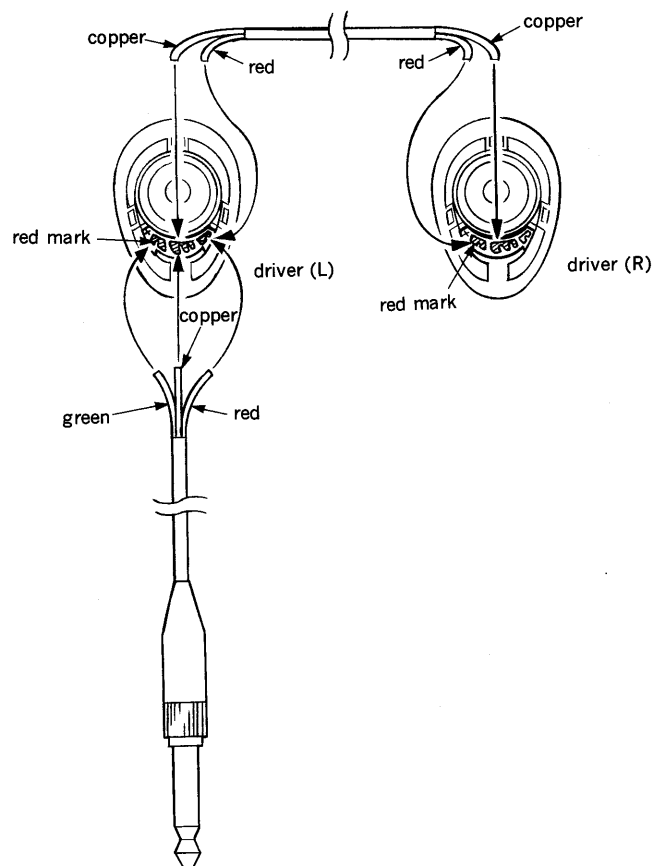


PHOTO: MDR-84

US Model  
Canadian Model  
UK Model  
E Model  
MDR-84  
AEP Model  
MDR-84/94

### 2. WIRING DIAGRAM

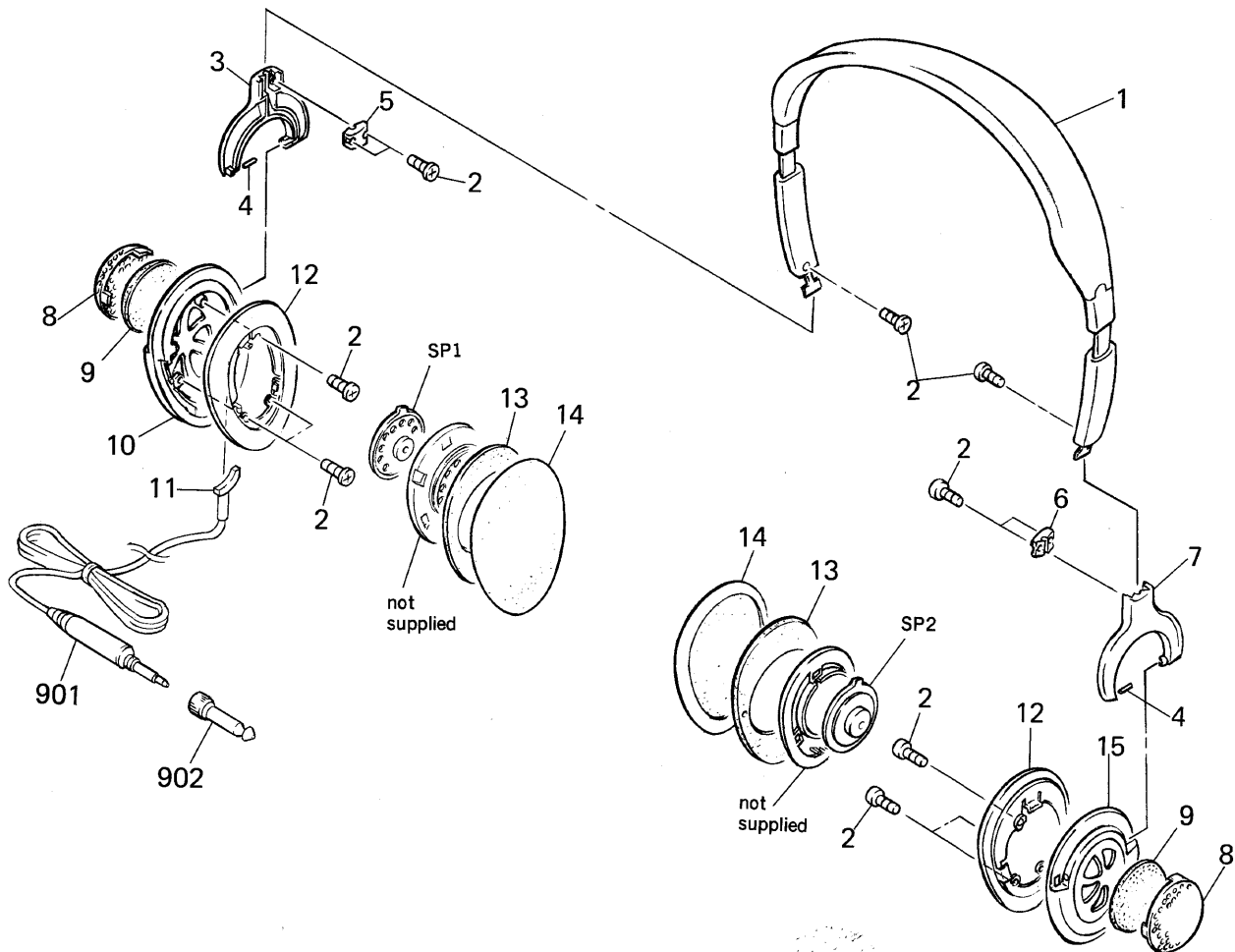


STEREO HEADPHONES  
**SONY®**

### 3. EXPLODED VIEW AND PARTS LIST.

#### NOTE:

- The mechanical parts with no reference number in the exploded views are not supplied.
- The construction parts of an assembled part are indicated with a collation number in the remark column.



Ref.No	Part No.	Description	Remarks
1	X-4941-184-1	(MDR-94)....HEAD BAND ASSY	
1	X-4941-189-1	(MDR-84)....HEAD BAND ASSY	
2	7-685-102-19	SCREW +P 2×4 TYPE2 NON-SLIT	
3	4-941-887-11	(MDR-94)....HANGER (L)	
3	4-941-887-01	(MDR-84)....HANGER (L)	
4	7-626-305-31	SPRING, PIN 1×8	
5	4-941-874-01	LID (L), HANGER	
6	4-941-873-01	LID (R), HANGER	
7	4-941-888-11	(MDR-94)....HANGER (R)	
7	4-941-888-01	(MDR-84)....HANGER (R)	
8	4-941-877-11	(MDR-94)....CAP, GRILLE	
8	4-941-877-01	(MDR-84)....CAP, GRILLE	
9	4-942-127-01	REGISTER	
10	X-4941-185-1	(MDR-94)....HOUSING (L) ASSY	
10	X-4941-187-1	(MDR-84)....HOUSING (L) ASSY	

Pef.No	Part No.	Description	Remarks
11	4-941-875-01	BUSHING	
12	4-941-868-01	(MDR-94)....PLAT, FRONT	
12	4-941-891-01	(MDR-84)....PLAT, FRONT	
13	4-941-836-01	(MDR-94)....CUSHION	
13	4-941-837-01	(MDR-84)....CUSHION	
14	4-941-838-01	PAD, EAR	
15	X-4941-186-1	(MDR-94)....HOUSING (R) ASSY	
15	X-4941-188-1	(MDR-84)....HOUSING (R) ASSY	
901	1-575-826-21	(MDR-94)....CORD (WITH PLUG)	
901	1-575-827-11	(MDR-84)....CORD (WITH PLUG)	
902	1-506-589-11	PLUG, ADAPTOR	
SP1	1-505-118-11	(MDR-94)....DRIVER (SPEAKER)	
SP1	1-505-116-11	(MDR-84)....DRIVER (SPEAKER)	
SP2	1-505-118-11	(MDR-94)....DRIVER (SPEAKER)	
SP2	1-505-116-11	(MDR-84)....DRIVER (SPEAKER)	