

## MY INFORMATION

Use this section to store your account information for future reference. Fill out this section using the information determined during the registration of your eVilla account. (See page 10 for instructions on registering your account.)

### Primary Account Username

**Example: myname**

This is also the first part of your email address—before the @ symbol.

### Primary Account Email Address

**Example: myname@eVilla.com**

See page 12 for tips on selecting your email address.

### Primary Account Password

If you write your password here, others may have access to it. For security reasons, you may want to write a "hint" that will help you remember it later.

### Primary Local Internet Access Telephone Number

See page 10 for information on choosing this number.

### eVilla Network Entertainment Center Serial Number

Located on the identification panel on the rear of the unit.

### eVilla Network Entertainment Center Model Number

## How to Contact Us

### CUSTOMER SUPPORT

For questions about billing, service plans and product returns, information or assistance with your Internet access account or email, or for problems with your device, contact us at:

**Web Site:**  
**sony.com/eVilla**

**Email:**  
**sos@info.sel.sony.com**

**Toll Free:**  
**1 888-344-9400**

**Or, write to:**  
**Sony Customer Service Center**  
**12451 Gateway Blvd.**  
**Ft Myers, FL 33913**

## TABLE OF CONTENTS

<b>Welcome Home</b> .....	<b>1</b>
<b>Keeping Your Device Clean and Safe</b> .....	<b>2</b>
<b>Helpful Resources</b> .....	<b>3</b>
Using the Getting Started Guide	
Accessing the eGuide	
Using the Quick Reference Card	
<b>Taking the Tour</b> .....	<b>4</b>
On the Front	
On the Back	
<b>Getting Connected</b> .....	<b>6</b>
The Keyboard	
The Scroll Mouse	
<b>Moving In (Registration)</b> .....	<b>9</b>
Registering Your eVilla Internet Access Account	
Choosing an Internet Access Number	
Entering Your Personal Information	
Providing Payment Information	
Entering a Username	
Entering a Password	
<b>Coming Home</b> .....	<b>14</b>
Logging In	
Dialing Up	
<b>Exploring the eVilla Neighborhoods</b> .....	<b>16</b>
eVilla Home	
The Web	
Email	
<b>Getting Familiar with the Layout</b> .....	<b>21</b>
The Toolbars	
The Tray	
The Status Bar	
The Media Player	
The File Manager	
The Hardware Icons	
<b>Leaving Home</b> .....	<b>26</b>
Saving Favorite Web Sites or Email Drafts	
Logging Out	
Hanging up	
Powering Off	
<b>Where to Get More Information</b> .....	<b>28</b>
Review the eGuide	
Visit the eVilla Web Site	
Learn the Language	
<b>Connecting Additional Accessories</b> .....	<b>29</b>
USB Printer	
External Storage Device	
Speakers	
<b>Solving Problems</b> .....	<b>31</b>
<b>Speaking the Internet Language</b> .....	<b>32</b>
<b>Specifications</b> .....	<b>35</b>
<b>The Legal Stuff</b> .....	<b>36</b>
<b>Index</b> .....	<b>37</b>



## WELCOME HOME



Congratulations on your purchase of the eVilla™ Network Entertainment Center—the most convenient way to communicate and enjoy multimedia entertainment through the Internet. After a simple registration process, you'll be able to connect to the world with the touch of a button. We're glad you chose the Sony eVilla Network Entertainment Center as your home on the Internet. We think you will be, too.

The eVilla Network Entertainment Center offers easy access to the most popular features of the Internet, including the World Wide Web, email, convenient content channels, and much more. With a high-resolution FD Trinitron display, built-in speakers and Memory Stick media slot, you'll enjoy a rich multimedia experience. Here's just a brief sample of how powerful the eVilla Network Entertainment Center is:

- Easy and powerful on-screen displays to get you around
- Truly private and customized online experience for up to four (4) people in your household
- Enjoy daily automatic downloads of email and Web content without tying up your telephone line
- Convenient automatic software management allows you to enjoy maintenance-free operation

And when it comes to using the Internet, you can:

- Keep up with the latest news and information from around the world
- Share photographs and movies with family and friends through electronic mail
- Tune in to your favorite Internet channels for music and radio
- Shop, get latest sports scores or plan your next family vacation
- Provide your kids with a powerful resource for researching their homework assignments
- Watch exciting Internet video
- And so much more

Because the eVilla Network Entertainment Center is so easy and fun to use, it's a great way to feel right at home on the Internet. We're certain it will soon become one of the most welcome additions to your home.

## KEEPING YOUR DEVICE CLEAN AND SAFE

This section provides you with some key instructions on how to clean your eVilla Network Entertainment Center and keep it from being damaged.

- Dangerously high voltages are present inside the unit. Do not open the cabinet. Refer servicing to qualified personnel only.
- The eVilla case holes are for ventilation. Never place anything in the holes.
- Avoid spilling food or liquids on or near your eVilla device.
- Use a soft, dry cloth to clean the screen, cabinet, controls and keyboard. You can use an anti-static dusting spray (compressed air) designed for VCRs, computer monitors and television sets to clean between the keys of the keyboard.
- Avoid using an anti-static solution or similar additives as they may scratch the screen.
- Avoid cleaning the device with ammonia-based or chlorine cleaners or sprays.
- Avoid using household detergents to clean any part of the device as they may scratch or damage the unit.
- Avoid using abrasive pads, scouring powders or solvents, such as alcohol or benzene.
- Keep the device out of direct sunlight and away from heat vents, radiators and other heat sources.
- Do not rub, scratch or tap the surface of the screen with sharp or abrasive items such as ballpoint pens or screwdrivers. This type of contact may result in a scratched picture tube.

---

## Using the Getting Started Guide

The Getting Started Guide is intended to assist you with setting up and getting familiar with your eVilla Network Entertainment Center. In this guide you'll find information on:

- eVilla hardware and software features, pages 4-8
- Connecting the keyboard, scroll mouse, phone and power cords, page 6
- Setting up your eVilla Internet access account, pages 10-13
- Using the eVilla keyboard, scroll mouse and other features, pages 7-8
- The look and feel of the user interface, pages 16-27
- Where to find answers to your questions, pages 28 and 31
- Connecting additional accessories, pages 29-30
- Problem solving, page 31

---

## Accessing the eGuide



The complete operating instructions, called the eGuide, are available online. All your usage questions can be answered quickly and easily without having to search for the printed manual. Simply click the **ONLINE TIPS** icon in the upper right corner of most of the screens for information on that section.

---

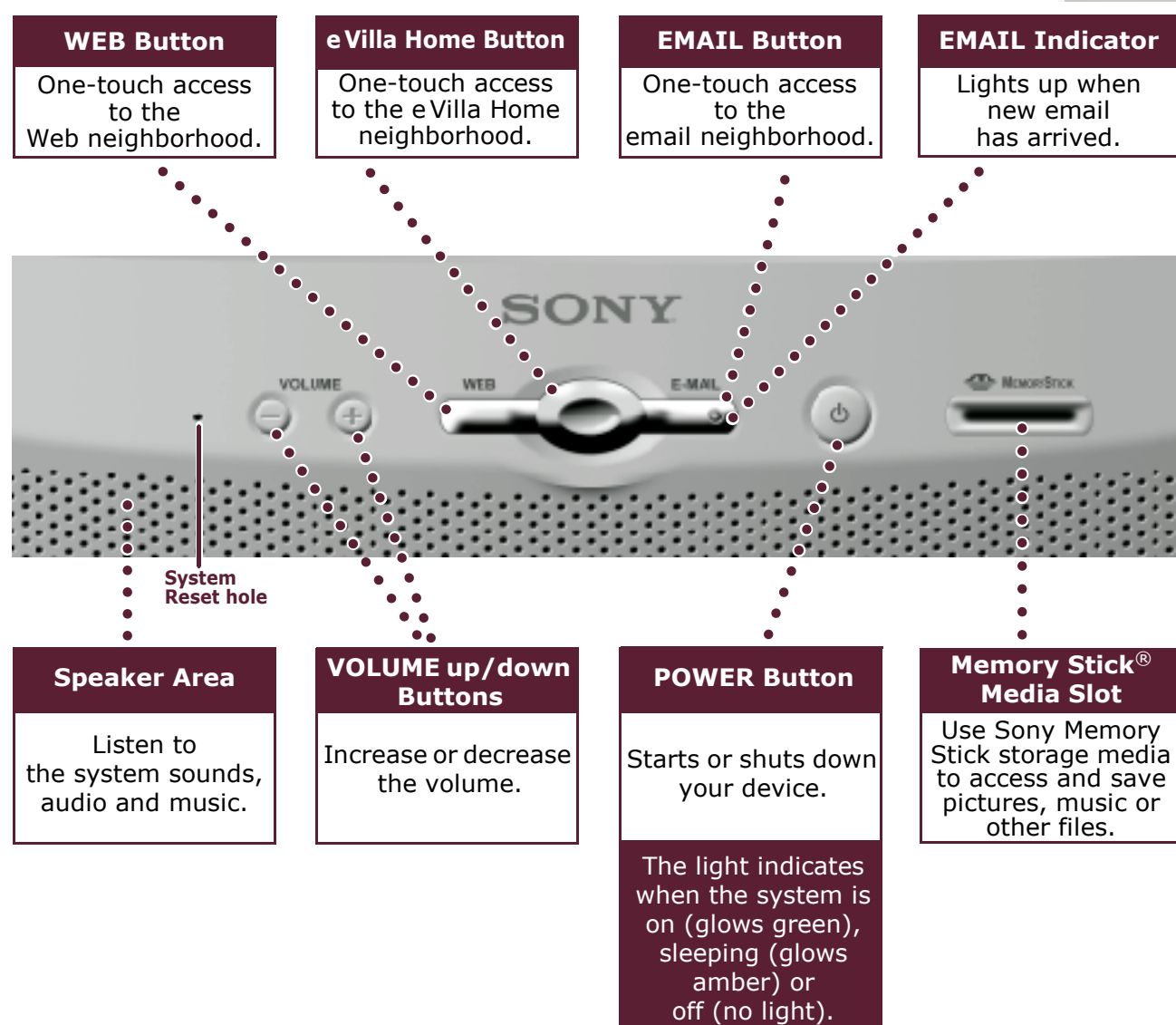
## Using the Quick Reference Card

A handy quick reference card also comes with your device. This card fits conveniently under your keyboard. Use it to remind you how to perform some of the most common Web and email tasks.

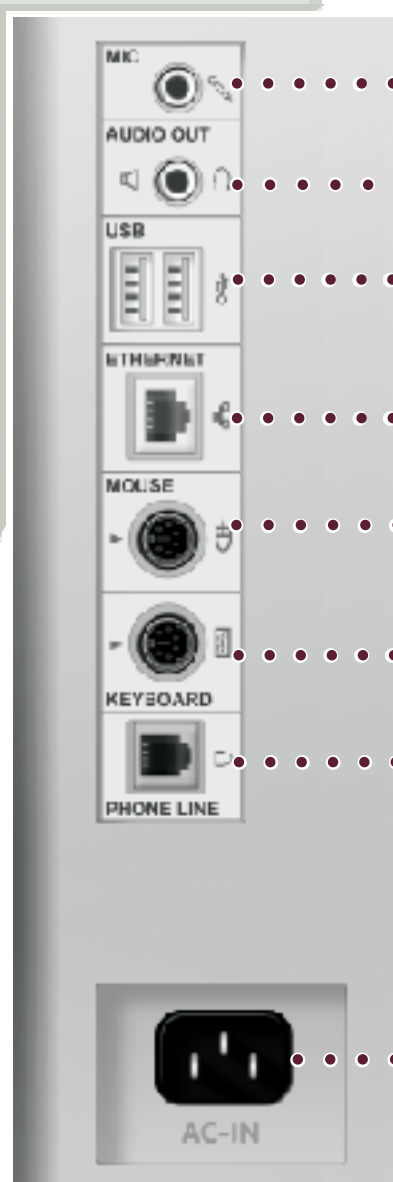
## TAKING THE TOUR

This section provides you with a quick look at the structure of the eVilla components: the front and back of the eVilla device, the keyboard and the scroll mouse.

### On the Front



## On the Back



### Mic in

Reserved for future use.

### Audio out

Connect headphones or external speakers.

### 2 USB ports

Connect printers and external storage devices.

### Ethernet connection

Reserved for future use.

### Mouse connection

Connect to the scroll mouse.

### Keyboard connection

Connect to the keyboard.

### Phone line in

Connect to the phone jack.

### Power connection

Connect to AC power.

### ... note

Additional speakers, printers and external storage devices are not included. You may purchase eVilla-supported products separately. Please go to the eVilla Web site at [sony.com/eVilla](http://sony.com/eVilla) for a current list of compatible products.



## GETTING CONNECTED

The connections on the back of the unit are marked according to what you plug into them. Plug the keyboard, scroll mouse, phone cord and power cord into their corresponding connections. The cords and jacks are color coded. Match the colors to assure you have plugged the keyboard and scroll mouse into the proper jacks. The cords can only be inserted one way, with the flat side of the connector aligned with the left side of the jack. Be sure the connections are solid.

### note

*Be sure to place the device close to a power outlet and phone jack. If you do not have a phone jack near the site you have selected, you may need to purchase a longer phone cord. Do not run cords where they could be tripped on or damaged.*

When you have plugged all the connections into the device, plug the phone cord and the power cord into the wall jacks.

### note

*Use the splitter if you have a single phone jack and want to have a phone next to your eVilla device. Plug the splitter into the telephone wall jack, then plug the eVilla device and the phone into the splitter's jacks.*



### For more information. . .

on connecting other accessories, such as printers and speakers, see page 29.

## The Keyboard



The eVilla keyboard is compact, functional and provides one-touch access to the information you'll want most. Across the top of the keyboard is a row of buttons. These are the **NET GUIDE** channel buttons. Simply press a button to go instantly to the Net Guide channel of your choice.

***For more information. . .***  
on the Net Guide, see page 17.

The eVilla keyboard includes a shortcut key which can be used to perform common tasks such as copying and pasting text.


***For more information. . .***  
on the supported shortcuts, look up "keyboard shortcuts" in the eGuide.

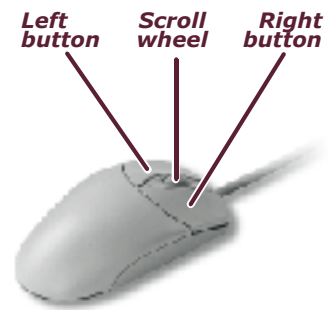


Attach the palm rest by inserting the tabs into the slots on the underside of the keyboard and sliding it into the locked position.


---

## The Scroll Mouse

There are three parts to the scroll mouse — the two buttons and the scroll wheel. When sitting on a flat surface, the mouse fits comfortably in the palm of your hand. Your fingers should naturally rest on the two buttons. When you move the mouse, you will see a hand move around on the screen; this is commonly known as the cursor .



### Point and Click

Move the cursor over an active element (for example, a hardware icon or Net Guide channel) or an Internet link. This is the “pointing” part. Press the left button one time (called “clicking”) to open or activate that feature. After you click to perform a task, the cursor changes  to let you know the information is processing. Or, move the cursor within a line of text, for instance while you are editing an email message, and click the left button to place the cursor there. Within text, the cursor appears as a flashing vertical line.

You may be familiar with the computer concept of “double clicking” an icon to open it. You can use this method with the eVilla Network Entertainment Center or click once to select an item, then click the proper action icon to perform the desired function, such as: **OPEN**, **CLOSE** or **DELETE**.

### Scrolling

Use the scroll wheel between the two mouse buttons to easily maneuver up and down through an email or a Web site that extends beyond the vertical size of the screen. Merely roll the wheel away from you to move up on the page, or roll it toward you to move down.



### **For more information. . .**

and detailed instructions on using the click, scroll and drag features of the scroll mouse, look up “Using the Scroll Mouse” in the eGuide.

## MOVING IN (REGISTRATION)

Now that you've connected the keyboard, scroll mouse, phone cord and power cord, you're ready to go. The **POWER** button is located on the front of the unit to the left of the Memory Stick media slot.

When you press the **POWER** button, the indicator light turns green and the eVilla Network Entertainment Center comes alive.

The first time you start the device you will see the Sony logo; then, the Welcome screen appears. You can choose to register your eVilla Internet access account or preview eVilla's features.

- To preview the features, click **START TOUR**.
- To register, click **REGISTER**.



### note

*You must register your Internet access account before you can use the eVilla Network Entertainment Center on the Internet. Please read the End User License Agreement included with your device before you register. It provides the terms and conditions for use of the eVilla device and its software.*

The screens you see on your eVilla unit may not look exactly as depicted in this guide. Sony continues to update the eVilla software to bring the best and foremost to you.

---

## Registering Your eVilla Internet Access Account

Registering your eVilla account to access the Internet is a snap. Use the scroll mouse to click **REGISTER** when the Welcome screen appears. A series of screens leads you step-by-step through the process.

### ... note

*If for any reason you need to stop the process before it is complete, don't worry. The display appears as soon as you power on again, and the account registration process automatically starts over.*

### ... tip

*For easy access when you need it, record your account information in the space provided on the inside front cover of this guide.*

---

## Choosing an Internet Access Number

Initially, the system dials a toll-free number to register your account. After that, it uses a local telephone number to connect to the Internet. Access numbers will be suggested to you during the registration process. Be sure you choose one or more that are in your local toll-free zone so you do not have to pay additional telephone charges while you are on the Internet.

### ... tip

*Please contact your local telephone company to assure the telephone number you select to access the Internet is free of any toll charges. Sony cannot be held responsible for any additional telephone charges incurred while using this device.*

## Entering Your Personal Information

In this step you'll provide information like your name, address, phone number and credit card information to register your account. The information is typed into a series of very easy, self-explanatory screens. It is completely safe and private. The information is sent to Customer Service over a secure, direct phone connection.

### **Example:**

First Name:	<input type="text"/>
Last Name:	<input type="text"/>
Address:	<input type="text"/>
Address 2 (if different):	<input type="text"/>
City:	<input type="text"/>
State (if needed):	<input type="text"/>
Zip/Post code:	<input type="text"/>
Country:	<input type="text"/>
Day Phone:	<input type="text"/>
Credit Card number:	<input type="text"/>
Expiration date (mm/yyyy):	<input type="text"/>

## Providing Payment Information

You must supply a debit or credit card number for monthly billing of your Internet access account. You'll also need the name on the card and the expiration date, just like you would if you were ordering something over the phone.



### **note**

*The subscription fee for Internet access is a monthly fee. Charges will vary depending on the type of service. Your Internet access is being provided by EarthLink, Inc. an Internet Service Provider (ISP) that is not affiliated with Sony. Your use of this service may be subject to additional terms and conditions as set forth by EarthLink.*

## Entering a Username

During the account registration process you will be asked to enter a primary account username. This name becomes part of your email address. Enter something that is easy for you and your friends to remember. Your name is always a good choice, as is a hobby or special interest. Additional usernames and email addresses, up to a total of four per eVilla device, can be set up once your eVilla account is registered. Not only does each user have a unique username and email address, they can save their own favorite Web sites and have their own email address book. Each user logs in using their own username and password.

You only need to enter your username here. Your eVilla device automatically enters the rest of the address that identifies your Internet access account as an eVilla account.

### Example:

The image shows a registration form with three input fields: 'Username:', 'Password:', and 'Password again:'. Below the fields are two buttons: 'Cancel/Quit' and 'Continue/Registration'.

The username is the part of your email address that is individualized and makes your address completely unique.

An email address has three parts:

- the **username**  
(should be between 6 and 20 characters long)
- the @ symbol
- the **hostname**/domain of the user,  
**eVilla.com** for eVilla Network Entertainment Center users.

### Example:

myname@evilla.com—Pronounced “my name at eVilla dot com.”

#### note

*It's possible that the username you want is already being used by someone else, so be prepared with a couple of possibilities.*

---

## Entering a Password

Enter a password that is easy for you to remember, but hard for others to guess. It is best not to use your birth date or your name. Combining letters and numbers is a good strategy. Write a hint for yourself on the inside front cover of this guide as a reminder in case you forget your password.

... **note** *If you do forget your password, don't worry. Call the toll-free number listed on the inside front cover.*

## Case Sensitivity

Your username and password are case sensitive. When you enter them in the registration screen, be sure to note how you typed them. For example, if your password is Fido, you must type it that way (not fido or FIDO) to access your account later.

### ***For more information. . .***

on adding other users to your account, look up "Setup" in the eGuide.



## COMING HOME

In this section, you'll learn how to log in and dial up so you can begin using your eVilla Network Entertainment Center.

### Logging In

Logging in is like unlocking the door to your own, personal room. In your room you might keep your private email address book, your favorite Web sites and your own, private electronic communication (called email). Each user (up to four) has a private room.

If there are several people using your system, you must log in before you can access your account. When you power on, the **eVilla Login** box appears. If you are the only user registered on the system, the box does not appear and you are not required to log in.

#### note

*In order to use passwords, you must enable this feature in Setup. See the eGuide for instructions on changing the security setting.*

### For more information. . .

on adding up to three additional users, look up "Setup" or "Users" in the eGuide.

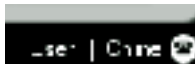
To log in:

1. Click your username in the **eVilla Login** box to highlight it.
2. Click in the **Password** text box to place the cursor there, and type the password you selected when you registered your eVilla Internet access account.
3. Click **LOGIN**.



#### note

*If the device was not powered off after someone else used it and they did not log out, simply click the **LOG OUT** icon located at the bottom of the screen, then log in using your own username. If you are working in someone else's account, you will not be able to access your email, address book or Favorites.*



## Dialing Up

The system is set up to allow you to work offline until you are ready to access the Web or send email. As soon as you select an option that requires you to be online, such as looking for a Web site or sending an email, a message appears asking if you want to go online. If you select **OK**, the device dials up automatically and you hear the distinctive sounds that indicate dial up.

When you're online, if there is no Internet activity for several minutes the device automatically terminates the connection. If that happens and you again want to work online, simply continue what you were doing. As soon as you select an option that requires you to be online, the "going online" message appears and the device dials up.



### note

*In Setup, you can select the amount of time the system is idle before automatically disconnecting from the Internet.*

### **For more information. . .**

on changing settings, including the automatic disconnect time, look up "Setup" in the eGuide.

This device provides access to numerous Internet services, such as the World Wide Web and electronic mail (email). Information on the Internet is created by millions of individuals and organizations. This is what gives the Internet its diversity and value. However, some of the information may include material that you find objectionable. Sony cannot be held responsible for the content of material accessed through this device. Please use it and the Internet responsibly.

The eVilla Network Entertainment Center does not support all data formats, including some plug-ins, and may not provide access to all areas of the Internet.

### **For more information. . .**

and instructions on adding users or changing an Internet access number, look up "Setup" in the eGuide.

## EXPLORING THE eVilla NEIGHBORHOODS

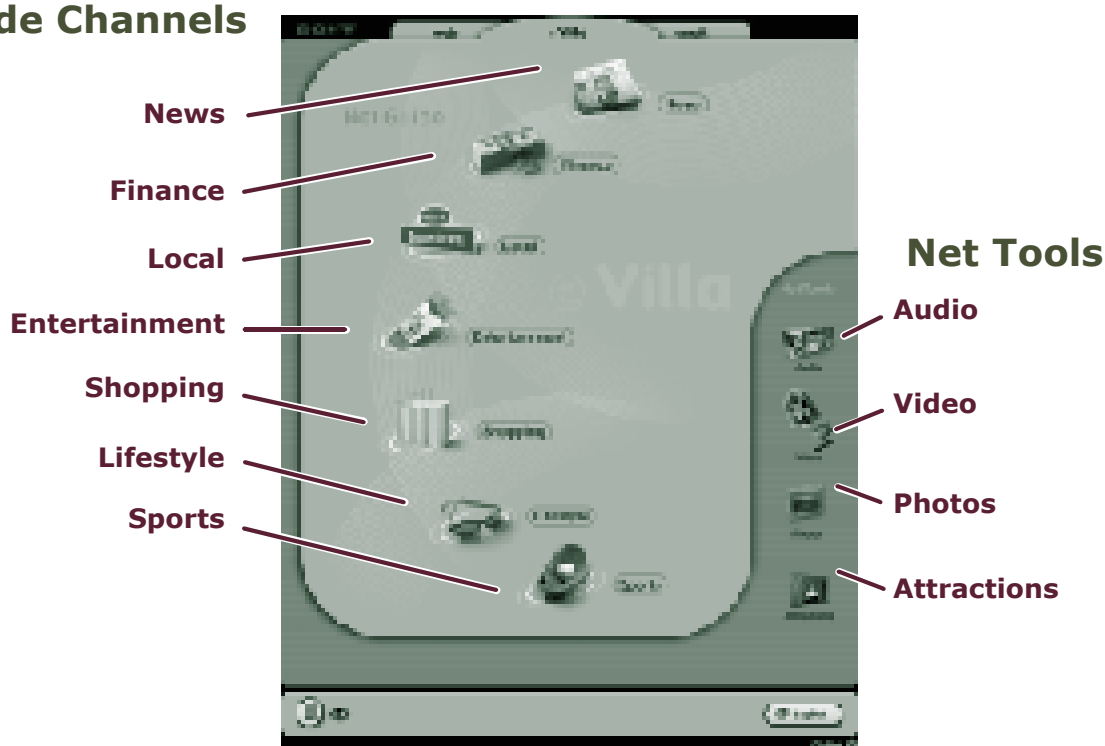
The eVilla Network Entertainment Center is organized into three neighborhoods: **web**, **eVilla Home** and **email**. Click the tabs at the top of the screen to easily get from place to place. You can also access these neighborhoods with a simple touch of one of the chrome buttons on the front of the device.

Your screen may appear slightly different.

### eVilla Home

The first neighborhood that appears is **eVilla Home**. This section allows you to quickly access some of the most interesting and widely used features of the Web, such as entertainment, shopping, news, sports, finances and more. In addition, Net Tools on this page allow you to listen to Internet radio, watch the latest Internet streaming video clips, store and view your photographs online, and explore the Attractions.

### Net Guide Channels



## Using the Net Guide Channels

You can access the **NET GUIDE** in two places: icons on **eVilla Home** and buttons across the top of your keyboard. Each takes you directly to an area on the Web that is full of useful information on that topic. One of the great features of the eVilla device is that it automatically updates the Net Guide content. Schedule the update time in Setup — after that, you don't have to do a thing. The content contained in these guides is downloaded from the Internet every day. So, you can review the Net Guide channels without having to go online!



### **NEWS**

Keep up-to-date on what's happening locally, nationally and worldwide.



### **FINANCE**

Monitor financial market news, use personal finance tools and track your own personal stock portfolio.



### **LOCAL**

Check on the local weather or traffic before you venture out, look up restaurants in your neighborhood, discover special events happening in your town and much more.



### **ENTERTAINMENT**

Access TV and movie listings, play online games, and link to entertainment news and Web sites.



### **SHOPPING**

Bring the mall right into your home. Shop for electronics, flowers, toys and gifts. . .



### **LIFESTYLE**

Research your next family vacation, get information on health, home and family-related Web content.



### **SPORTS**

Keep track of your favorite teams' stats and comprehensive sports news.

### ***For more information. . .***

on what's available in these guides, look up "Net Guide" in the eGuide.

## Using the Net Guide Channels - cont.

When you select one of the **NET GUIDE** channels by clicking an icon or pressing a button, you are taken instantly to the **web** neighborhood, and the channel you chose appears. You do not have to be online to view a Net Guide channel. Each channel has links to other related pages on the Web. As soon as you click one of the links, the device dials up (if you're not already connected) and the Web page you chose appears.

To check out another channel simply click its icon on the toolbar or press the corresponding button on the keyboard.



## Using the Net Tools Icons

On **eVilla Home** you will also find the **NET TOOLS** icons. These icons allow you to listen to the radio, watch video clips, store your electronic photographs online for friends and family to view, and much more.

### AUDIO

Some of the best Internet and standard radio stations are preset into the eVilla Network Entertainment Center.



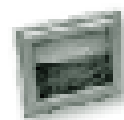
### VIDEO

Easily review the latest video clips available on the Web or sent to you as email attachments.



### PHOTOS

Store your photos online for your family and friends to enjoy.



**ATTRACTIONS** Learn about special offers from Sony and Sony partners.



## For more information. . .

on using these icons, look up "Net Tools" in the eGuide.

## The Web

Click the **web** tab to quickly access the World Wide Web. The world is instantly brought into the comfort of your home. When you click the **web** tab on your eVilla device, your personal start page appears.



### BACK

If you've already been surfing the Web, click this icon to scroll back through the sites you've already visited.



### FORWARD

Click to reverse the effects of the **BACK** icon. Scrolls you "forward" again, as far as the page you were on before you clicked **BACK**.



### START PAGE

Click to return to your personal start page.



### GO TO:

If you know the address of the Web site you want to visit, type it in this text box. Then press **ENTER** on the keyboard or click the **LOAD** icon. There's no need to type http:// or www. before the site address, the eVilla device adds it for you.



### LOAD/REFRESH

Click to load the Web site you typed in the **GO TO:** box, or refresh the information on the current site.



### FAVORITES

Click to open your list of Favorites. From here you can add, open, edit or delete Favorites.



### ONLINE TIPS

Your link to the eGuide. Click here to automatically bring up the Web section of the eGuide.



### FONT

Click the up arrow next to the letter **A** to increase the size of the text you see on a Web site. Or, to decrease the size, click the down arrow.



### PRINT

Click to print the current Web page.



### ADD TO FAVORITES

Click to add the current Web page to your list of Favorites sites.

## Email

Click the **email** tab to go to your email inbox where your incoming mail is stored. From the inbox you can check your new email, write messages to send to others and update your address book.



Opens the folder where your incoming mail resides.



Opens the folder where you save drafts of your email messages if you're not ready to send them.



Opens the folder where copies of the mail you have sent are stored.



Opens the page where you write messages.



Opens the address book where you can store, update and manage email addresses.



Your link to the eGuide.  
Click here for helpful tips about email.

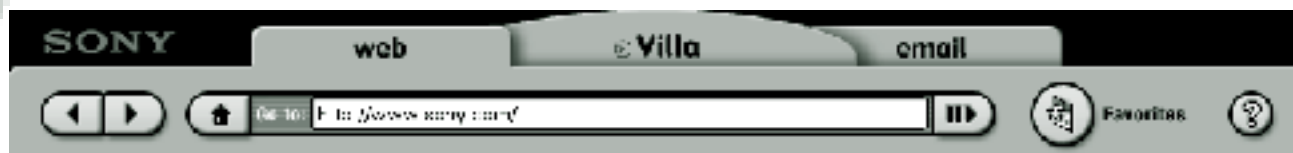


## GETTING FAMILIAR WITH THE LAYOUT

Read this section to familiarize yourself with the look and feel of the on-screen display.

### The Toolbars

The toolbars are located directly below the tab in the **email** and **web** neighborhoods. They contain icons that allow you to navigate the Web and work in your email.



*Web Toolbar*

***For more information. . .***

on the **WEB** and **email** toolbars, see page 19 and page 20.



## The Tray

The Tray is the colored bar nearest the bottom of the screen (above the Status Bar).



On the Tray you will find:

- The Hardware Icons  
(See page 24 for more information on Hardware icons.)
- **SETUP** Icon  
In Setup you can change user information, modem connection, video and audio settings, mouse speed, printer settings, reset the date and time and schedule browser updates.
- **LOG OUT** Icon  
(See page 26 for information on logging out.)

## The Status Bar

The Status Bar is the black bar at the very bottom of the screen.



On the Status Bar you will find:

- Status of processing information.
- Username of user currently logged on to the system.
- **ONLINE/OFFLINE** Indicator  
This indicator tells you if you are connected to the Internet or not. Click this icon if you want to disconnect from the Internet.

### **For more information. . .**

on changing settings, see "Setup" in the eGuide.

## The Media Player

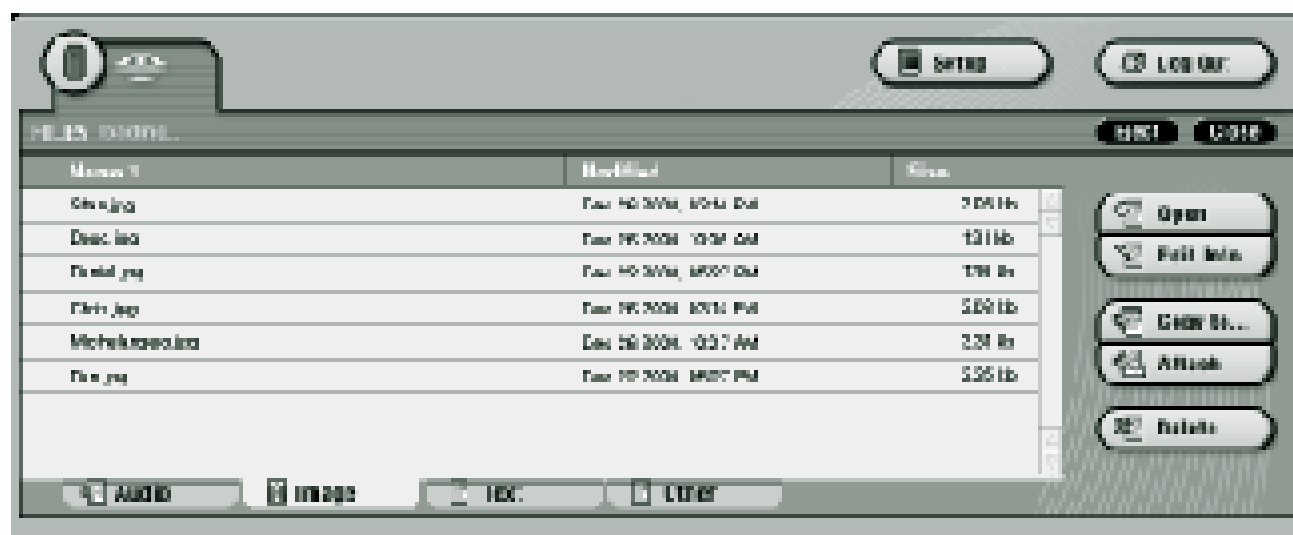
When you choose to play a music or video file from a storage device (see page 24 for information on storage devices) or from the Internet, the Media Player opens at the bottom of the screen above the Tray.



The Media Player allows you to listen to music and watch streaming video content in popular Internet formats.

## The File Manager

When you select any of the storage device icons (see Hardware Icons on page 24), the File Manager expands below the Tray at the bottom of the screen.



All the files you have stored on that storage device are listed in one of four categories: audio, images, text and other. The device knows what a file's category is based on the extension (the three letters that follow the dot). For example, a music file might have the extension .mp3; an image file (picture) might have a .jpg extension. The File Manager is only accessible through external storage media (Memory Stick card or Zip disk) or your online storage.

## The Hardware Icons

The hardware icons are located on the Tray (see page 22). They let you know what other accessories are connected to your eVilla Network Entertainment Center, whether they're on and if they're available for you to use. Only the accessories actually connected to the device will appear in this area. For example, if you have a printer connected, you will see the printer icon.

**Sony Memory Stick®** storage media — Purchased Separately — Memory Stick IC recording media, similar to floppy disks used with a computer, provide storage of files offline — meaning you don't have to be connected to the Internet. There is a slot on the front of the device especially for these versatile storage media. They are portable, which means they can be used to share your files with other electronic products, such as digital cameras, camcorders, personal organizers and other electronic devices. If there is no Memory Stick card in the Memory Stick media slot, this icon will be "faded," indicating it is not ready to be used.



### note

*Memory Stick media are sold separately and can be purchased from a local Sony retailer or online. To purchase them online, click the **web** tab and type [sony.com/eVilla](http://sony.com/eVilla) in the URL. The site has instructions on purchasing eVilla-supported products.*

**Iomega® USB Zip® drive** — Purchased Separately — A USB Zip drive is another type of external file storage. An Iomega USB Zip drive plugs directly into one of the USB ports, quickly and easily allowing files to be stored on portable Zip disks.

If you have an external USB Zip drive connected to your device, the **ZIP DRIVE** icon appears in the lower left corner with the other hardware icons. If there is no Zip disk in the drive, the icon will be "faded," indicating it is not ready to be used. If you do not have a USB Zip drive connected, this icon does not appear.



### note

*Zip disks must be used when saving to a USB Zip drive. Zip disks come in two sizes: 100MB and 250MB. The 100MB disks can be used in either a 100MB or a 250MB USB Zip drive. The 250MB disks can only be used in a 250MB USB Zip drive. Be sure you purchase the proper size disk for your USB Zip drive.*



## The Hardware Icons - cont.

**USB Printer** — Purchased Separately — Having a printer allows you to print out Web pages, email, photographs and more.

The eVilla Network Entertainment Center supports a wide variety of printers. Go to the eVilla Web site, [sony.com/eVilla](http://sony.com/eVilla), for a current list of supported printers. If you have connected a USB printer via one of the USB ports, the **PRINTER** icon appears in the lower left corner with the other hardware icons. If the printer is not on, the icon will be “faded,” indicating it is not ready to be used. If you do not have a printer connected, this icon does not appear.

... **note** See “Connecting Additional Accessories” on page 29 for instructions on connecting a printer or an external Zip drive. Go to the eVilla Web site, [sony.com/eVilla](http://sony.com/eVilla), for information on which printers and external storage devices are supported with the eVilla Network Entertainment Center.

### **For more information. . .**

and instructions on how to use your hardware icons, look up “Hardware icons” in the eGuide.

## LEAVING HOME

Ready to end your session and leave the eVilla device?—Simple! There are some items you'll want to keep in mind. This section takes you through a few of the things to consider.

---

### Saving Favorite Web Sites or Email Drafts

If you're in a Web site that you think you will want to go back to, consider saving it to your Favorites before you end your session.

***For more information. . .***

on saving favorite Web sites, look up "Favorites" in the eGuide.

Or, if you are writing an email that is not yet complete, you might want to save it as a draft so you can come back to it later.

***For more information. . .***

on saving email drafts, look up "Saving Drafts" in the eGuide.

---

### Logging Out

If there are other people registered to use your device and you don't want them to have access to your email, favorite Web sites or address book, it's a good idea to log out and disconnect from the Internet when you finish. Logging out ensures that the next person to use the device uses their own username and password to log in to their personal information.



To log out, click the **LOG OUT** icon on the Tray in the lower right hand corner of the screen.

... **tip**

*Don't share your username and password with anyone, unless you want them to have access to your private email and information.*

## Hanging up



If you log out when you finish, a window appears giving you the option to hang up at that time. If you don't log out, be sure to disconnect from the Internet when you are finished by clicking the **ONLINE** button on the Status Bar in the lower right corner of the screen. Pressing the **POWER** button will also automatically disconnect you from the Internet.



### note

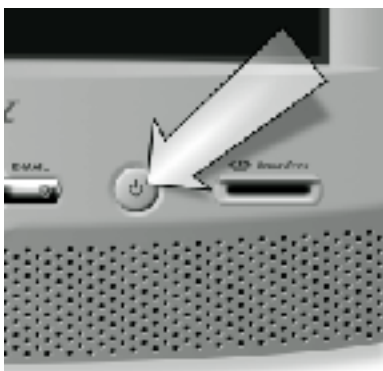
*If your Internet connection is inactive for several minutes, it is automatically disconnected. When you want to reconnect, simply select a function that requires being online (such as sending an email) and the device prompts you to reconnect.*

There are several things you can do offline. That means you do not have to be connected to the Internet to view recent email, look at your address book, look through files on external storage devices, and much more.

### **For more information. . .**

on what you can do offline, look up "Working Offline" in the eGuide.

## Powering Off



After you have disconnected your Internet connection, press the **POWER** button to shut down. There is also a power save mode to protect the screen and reduce electricity requirements. If the eVilla device is on but has not been used for a while, the screen goes dark and the power indicator light turns amber to let you know it is sleeping. Move the scroll mouse or press any key on the keyboard to bring the screen back on.

## WHERE TO GET MORE INFORMATION

Want to learn more about using the eVilla Network Entertainment Center, the Internet or email? There are several sources of additional information available.

---

### Review the eGuide

The eVilla Network Entertainment Center comes with complete operating instructions—online! For further information on eVilla features, check out the eGuide—a quick and easy reference to everything the device can do, without the hassle of a paper manual that can get lost or tattered.

If you have a question about what to do or where to go, just click the **ONLINE TIPS** icon in the upper right corner of the eVilla display for instant helpful tips. Each neighborhood has an **ONLINE TIPS** icon that makes it easy for you to get help on a task.



*Online Tips  
Icon*

---

### Visit the eVilla Web Site

The eVilla Web site ([sony.com/eVilla](http://sony.com/eVilla)) provides quick access to the latest information about the eVilla device, accessories and product support.

---

### Learn the Language

Look in the glossary on page 32 for definitions of some of the words you'll come across in the Getting Started Guide. Then, as you venture into the fascinating world of the Web, look in the eGuide glossary for an even larger list of words. There are also "links" from key words in the eGuide to the glossary. Just click the underlined word and the definition comes up on the screen.

## CONNECTING ADDITIONAL ACCESSORIES



You can connect a USB printer, an external USB storage device or another set of speakers to your eVilla Network Entertainment Center in a flash whenever you wish to expand the capability of your eVilla device.

### USB Printer

There are many things you can find on the Web or get through email that you might want to print out and keep. The eVilla device supports a number of USB printers for just that reason. Go to the eVilla Web site at [sony.com/eVilla](http://sony.com/eVilla) for a current list of compatible printers.



#### note

*After setting up the printer according to the manufacturer's instructions, turn on the power. A printer icon should appear in the hardware icon area (lower left) of the screen. If not, check to be sure the connection is solid and the printer is on.*

### External Storage Device

The eVilla device comes equipped with a Memory Stick media slot. You can also add an external Zip drive.



---

## Speakers

The eVilla Network Entertainment Center comes complete with a good quality sound system, but if you want to enhance it, you can add an additional pair of speakers or connect to your stereo receiver for broadcast throughout your home.

If you choose to attach additional speakers, refer to the manufacturer's documentation for information on adjusting the volume, tone or balance.

### ... note

*Be sure the accessories you purchase have USB cable connections so they are compatible with this device. The USB cable may accompany your accessories or may have to be purchased separately.*

*Go to the eVilla Web site, [sony.com/eVilla](http://sony.com/eVilla), for information on which accessories are supported with the eVilla Network Entertainment Center. Supported accessories can be purchased online or from a local Sony retailer.*

## SOLVING PROBLEMS

### The power light doesn't come on

- Check that the AC power cord is securely connected to the device and plugged into the wall outlet.
- Check that the wall outlet is working correctly by plugging in something that you know works.
- Firmly press the **POWER** button on the front panel of the device. It should glow green.

### There is no picture on the screen

- Check that the AC power cord is securely connected to the device and plugged into the wall outlet.
- If the **POWER** button is glowing amber, the unit is in "sleep" mode. If the unit has not been used for a little while, the screen goes dark to conserve energy. Move the scroll mouse or press any key on the keyboard to bring the display back on.
- The display may be turned off. Turn it on by pressing the **POWER** button on the front of the eVilla device.

### Cursor doesn't move properly or doesn't move at all

- Check that the mouse cable is plugged securely into the connection on the back of the unit.

### Sound is too low or too high or there is no sound at all

- Adjust the volume accordingly using the up/down **VOLUME** buttons located on the front of the device.
- Check the rear connector panel to ensure that nothing, other than speakers, is plugged into the speaker connector.

### I am unable to connect to the Internet

- Check that the phone cord is securely plugged into the back of the device and into the phone jack on the wall.
- Make sure that no one else in the house is using a telephone connected to the phone line your eVilla device is trying to dial from.
- Check that the phone jack is working properly by plugging a working telephone into it.

### The device is behaving abnormally or is unresponsive

- You may have to reset the device by slowly inserting a pushpin, or other similar item, into the system reset hole. The system will shut down and restart.

### The picture is not centered or sized properly

- Click the **SETUP** icon, then click **DISPLAY**. You can change the size, proportions, brightness, contrast and more.

### The keyboard isn't functioning

- Be sure the keyboard is securely plugged into the back of the device.

### There's a black/gray line running down the screen's right side

- This is normal for the Trinitron monitor and is not a malfunction. It is a shadow from the damper wire used to stabilize the aperture grille and is most noticeable when the screen's background is light (usually white). The aperture grille is the essential element that makes a Trinitron picture tube unique by allowing more light to reach the screen, resulting in a brighter, more detailed picture.

### There is no picture and the power light continually flashes amber or alternates between amber and green

- Unplug the AC Power Cord, waiting one minute before reconnecting.
- If condition continues, unplug the AC Power Cord and please contact Customer Support.



For further problem solving see the eGuide or contact Customer Support. (See the inside front cover for how to contact us.)

## SPEAKING THE INTERNET LANGUAGE

In this section you will find a list of Internet-related words that you will come across in this guide. For definitions of more Internet and email terms, see the eGuide.

**Browser:** Application for viewing Web pages or stored files. The eVilla Network Entertainment Center has its own Web browser.

**Dial-up number:** Or Internet Access Number. The phone number(s) your modem dials to connect you to your Internet Service Provider (ISP) which connects you to the Internet.

**Domain name:** The main part of a URL, or Internet Address after the @ symbol. It consists of at least two parts, separated by periods (called dots), usually the organization's name (such as eVilla), followed by three letters designating the organization type: .com (commercial business), .net (network organization), .org (nonprofit organization), .mil (military) and .gov (government). Your domain name is evilla.com.

**eGuide:** The eVilla Network Entertainment Center's online operating instructions.

**Email:** Short for electronic mail. If you have an email address, you can send a nearly instantaneous electronic message to anyone on the Internet who has an email address.

**Icon:** A graphical representation of a button on a monitor or display screen. Most icons are symbols that represent a function, concept or other feature. Generally the icon's graphic design suggests the function, concept or feature it represents, such as the question mark used to indicate **ONLINE TIPS**. When we refer to a button in this guide, we're referring to a physical button you would push with your finger. When we refer to an icon, it is an on-screen "button" that you would click with your scroll mouse.

**Internet:** The huge computer network that connects millions of smaller computer networks all around the world using the TCP/IP protocol. The Web is part of the Internet.

**ISP:** Internet Service Provider. A company that provides access to the Internet and other types of services.

**Link:** Short for hyperlink. On the Web, you click on links (text or graphics) to move from page to page. Links are often underlined and in a different color from other text. When you roll your cursor over a link on the eVilla display a change in the appearance of the cursor indicates that the text or icon is a link.

**Log in:** To gain access to or sign in to your individual eVilla Internet access account and personal settings.

**Log out:** To sign out of your individual account so others don't have access to your information.

**Memory Stick:** An IC recording media, similar to a floppy disk used with a computer. Used to store electronic files that can then be used with many other electronic devices.

**Modem:** A part of your device that makes the connection to the Internet over a phone line. The modem dials the eVilla Internet account telephone access number to connect to the Internet.

**Net Guide:** Specially provided popular information on the World Wide Web. The large icons on the **eVilla Home** neighborhood and the function buttons across the top of the keyboard access the Net Guide channels.

**Online:** The state of being connected to the Internet. "Offline" is when you are not connected to the Internet.

**Page:** Short for Web page. A document on the Web that is displayed by a Web browser.

**Password:** A private code (letters, numbers or both) used to prevent others from accessing your eVilla account.

**Status Bar:** The area at the bottom of the eVilla screen that displays the system status and other information related to the system.

**Storage Device:** Any external, portable method for storing files, such as Memory Stick cards and Zip disks.

**Surf:** To navigate around the Web.

**Toolbar:** An area in the on-screen display which contains icons that allow you to perform specific tasks. On the **web** toolbar you will find the **BACK, FORWARD, LOAD/REFRESH, START PAGE** and font size icons, as well as the **GO TO:** text box.

**Tray:** The area on the eVilla screen that contains the hardware icons and other icons to control your eVilla device.

**USB:** Universal Serial Bus. A standard for connecting devices such as keyboards, mice, printers and Zip drives to computers and Internet devices, like your eVilla Network Entertainment Center.

**User:** Anyone who uses the Internet.

**Username:** The name of a particular user on the eVilla Network Entertainment Center. Your username is the part before the "@" symbol in your eVilla email address.

**Web:** Short for World Wide Web.

**Web Browser:** Sometimes called a browser. Application used for viewing Web pages.

**Web Page:** A document on the World Wide Web that is displayed by a Web browser.

**World Wide Web:** Web for short. The part of the Internet that allows you to "surf" or "browse" through all kinds of text, graphics and multimedia with a Web browser. Information on the Web is formatted into "pages" and "sites." Pages and sites are actually files stored on remote network computers.

**Zip® drive:** An external storage device made by the Iomega Corporation. Zip drives use Zip disks to store large individual files or large quantities of files. The eVilla Network Entertainment Center is compatible with the USB version of Iomega Zip drives.

## Hardware

### **Display**

15" (14" Visual Image Size) Portrait View  
FD Trinitron® CRT display  
(0.24 - 0.25mm AG pitch)  
800 lines (H) x 1024 pixels (V)

### **CPU/Graphics**

Geode GX1R™ (266MHz) processor,  
Geode CS 5530A

### **Memory**

64MB SDRAM  
24MB Flash ROM

### **Modem**

V.90 (56 kbps max.)

### **Audio**

AC97 Codec, Built-in Stereo Speakers

### **Input/Output**

Memory Stick® media slot  
(Memory Stick media not included)  
Keyboard/Mouse ports: PS-2 (x2)  
USB ports (x2)  
Ethernet jack (RJ-45) (For future use)  
Modem jack (RJ-11)  
Audio Out (Headphone/Speaker port): Mini jack  
Mic Input: Mini jack (For future use)

### **Power Supply**

120VAC, 50-60Hz, 2.0Amps, 110W max.

### **Dimensions**

11.875"(w) X 17.875"(d) X 16.5"(h)  
(300mm x 453mm x 417mm)  
at 15 degree tilt position

### **Weight**

31.9lbs (14.5 kg) net weight  
43.0lbs (19.8 kg) gross weight  
(gross weight includes eVilla unit, supplied  
accessories and packing materials)

## Software

### **Operating System**

BelA®

### **Email**

IMAP protocol, up to 4 users/individual inbox  
Composer (online and offline)

### **Font**

Arial  
(English language, size/color selection available)

### **Web Browser**

OPERA® HTTP 1.0/1.1, HTML 4.0, CSS 1 & 2,  
JavaScript 1.3, FTP, Transfer Layer Security (TLS)

### **Browser Plug-ins**

Macromedia® Flash™ 4.0,  
Personal Java® 3.0.1 for BelA

### **Image Formats**

JPEG, Progressive JPEG, GIF, PNG

### **File Viewers**

PDF, Plain ASCII Text, HTML

### **Audio**

RealAudio®, MP3, MP2 (MPEG Layer 1, 2 and 3),  
WAV, MIDI, AU, AIFF

### **Video**

RealPlayer® 8

### **Security**

SSL2 and SSL3 (40 and 128 bit encryption)

## Supplied Accessories

Compact keyboard (71 keys) and palm rest  
Scroll Mouse  
25' Phone Cord  
Phone Line Splitter  
AC Power Cord  
Getting Started Guide  
Quick Reference Card  
Warranty Card  
Unpacking Insert  
End User License Agreement

## THE LEGAL STUFF

### FCC Regulations and Information

This device has been tested and found to comply with the limits for a Class B digital device, pursuant to Part 68 of the Federal Communications Commission (FCC) Rules. These limits are designed to provide reasonable protection against harmful interference to the telephone network when connected directly to the telephone lines in a residential installation. In order to fully comply with the Rules of the FCC, the following instructions should be read carefully and followed completely where applicable:

The FCC has established Rules which permit this device to be directly connected to the telephone network. Standardized jacks are used for these connections. This equipment should not be used on party lines or coin phones.

If this device is malfunctioning, it may also be causing harm to the telephone network; this device should be disconnected until the source of the problem can be determined and until the repair has been made. If this is not done, the telephone company may temporarily disconnect service.

The telephone company may make changes in its technical operations and procedures; if such changes affect the compatibility or use of this device, the telephone company is required to give adequate notice of the changes. You will be advised of your right to file a complaint with the FCC.

If the telephone company requests information on what equipment is connected to their lines, inform them of:

- The telephone number to which this unit is connected.
- The ringer equivalence number.
- The USOC jack required.
- The FCC registration number.

Items (b) and (d) are indicated on the label. The Ringer Equivalence Number (REN) is used to determine how many devices can be connected to your telephone line. In most areas, the sum of the RENs of all devices on any one line should not exceed five (5). If too many devices are attached, they may not ring properly.

### Declaration of Conformity

Trade Name: **Sony**  
Model No.: **NTE-D101**  
Responsible Party: **Sony Electronics Inc.**  
Address: **680 Kinderkamack Road**  
**Oradell, NJ 07649**  
Telephone Number: **201-930-6972**

This device complies with Part 68 of the FCC rules. Each product marketed is identical to the representative unit tested and found to be compliant with the standards. Records maintained continue to reflect the equipment being produced can be expected to be within the variation accepted, due to quantity production and testing on a statistical basis. Operation is subject to the following two conditions: 1) This device may not cause harmful interference, and 2) this device must accept any interference received, including interference that may cause undesired operation.

### Radio Interference Information

This equipment has been tested and found to comply with the limits for a Class B digital device, pursuant to Part 15 of the FCC rules. These limits are designed to provide reasonable protection against harmful interference in a residential installation. This equipment generates, uses and can radiate radio frequency energy and, if not installed and used in accordance with the instructions, may cause harmful interference with radio communications. However, there is no guarantee that interference will not occur in a particular installation. If this equipment does cause interference to radio or television reception (which you can determine by turning the equipment off and on), you are encouraged to try to correct the interference by one or more of the following measures:

- Change the position of the unit with respect to the radio or television equipment that is receiving the interference.
- Move the unit away from the equipment that is receiving the interference.
- Plug the unit into a different outlet so that the unit and the equipment receiving the interference are on different branch circuits.
- Shielded cables and I/O cords must be used for this equipment to comply with the relevant FCC regulations.

Changes or modifications not expressly approved in writing by Sony Electronics, Inc., void the user's authority to operate this equipment. If these measures do not eliminate the interference, you should consult your Sony dealer or an experienced radio/television technician for additional suggestions. In addition, you may find the following booklet prepared by the FCC helpful: "How to Identify and Resolve Radio-TV Interference Problems." This booklet is available from the U.S. Government Printing Office, Washington, DC, 20402 Stock No. 004-000-00345-4.

### Telephone line interruption

This system connects to the Internet through your telephone line. If you do not have a dedicated telephone line for use solely with this system, you cannot use your telephone to receive incoming calls or to place outgoing calls during the time that the system is online.

### Power Supply Cord

This notice is applicable for USA only.

If shipped to USA, install only a UL LISTED LABELLED power supply cord meeting the following specifications:

Plug Type **Nema-Plug 5-15p**  
Cord **Type SVT or SJT, minimum 3 x 18 AWG**  
Length **Maximum 15 feet**  
Rating **Minimum 7 A, 125V**

### Notice to Users

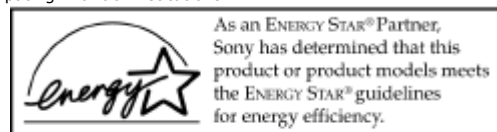
© 2001 Sony Electronics Inc. All rights reserved. This guide and the software described herein, may not be reproduced, translated, or reduced, in whole or in part, to any machine-readable form without prior written approval.

SONY ELECTRONICS INC. PROVIDES NO WARRANTY WITH REGARD TO THIS GUIDE, THE SOFTWARE, OR OTHER INFORMATION CONTAINED HEREIN AND HEREBY EXPRESSLY DISCLAIMS ANY IMPLIED WARRANTIES OF MERCHANTABILITY OR FITNESS FOR ANY PARTICULAR PURPOSE WITH REGARD TO THIS GUIDE, THE SOFTWARE, OR SUCH OTHER INFORMATION. IN NO EVENT SHALL SONY ELECTRONICS INC. BE LIABLE FOR ANY INCIDENTAL, CONSEQUENTIAL, OR SPECIAL DAMAGES, WHETHER BASED ON TORT, CONTRACT, OR OTHERWISE, ARISING OUT OF OR IN CONNECTION WITH THIS GUIDE, THE SOFTWARE, OR OTHER INFORMATION CONTAINED HEREIN OR THE USE THEREOF.

Sony Electronics Inc. reserves the right to make any modification to this guide or the information contained herein at any time without notice. The software described herein is governed by the terms of a separate user license agreement.

This product contains software owned by Sony and licensed by third parties. Use of such software is subject to the terms and conditions of license agreements enclosed with this product. Some of the software may not be transported or used outside the United States. Software specifications are subject to change without notice and may not necessarily be identical to current retail versions.

Updates and additions to software may require an additional charge. Subscriptions to online service providers may require a fee and credit card information. Financial services may require prior arrangements with participating financial institutions.



ENERGY STAR® is a U.S. registered mark.

The International ENERGY STAR Office Equipment Program is an international program that promotes energy saving through the use of computers and other office equipment. The program backs the development and dissemination of products with functions that effectively reduce energy consumption. It is an open system in which business proprietors can participate voluntarily. The targeted products are office equipment such as computers, displays, printers, facsimiles and copiers. Their standards and logos are uniform among participating nations.

Sony, e Villa, Trinitron, "Memory Stick" and the Memory Stick logo are trademarks of Sony.

Iomega and Zip are registered trademarks of Iomega Corporation. Geode is a trademark of National Semiconductor Corporation. BeIA is a registered trademark of Be Inc. in the U.S. and other countries. RealPlayer, RealVideo and RealAudio are registered trademarks of RealNetworks, Inc. Macromedia and Flash are trademarks or registered trademarks of Macromedia, Inc. Java and Personal Java are trademarks of Sun Microsystems in the U.S. and other countries. OPERA is a registered trademark of OPERA Software, AS. PS-2 is a trademark of International Business Machines Corporation.

All other trademarks are trademarks of their respective owners.

### Service Requirements

In the event of equipment malfunction, all repairs should be performed by Sony or an authorized agent. It is the responsibility of users requiring service to report the need for service to Sony or to one of our authorized agents. For service, call 1-888-344-9400.

### Your Warranty

Your e Villa Network Entertainment Center comes with a one-year limited warranty on parts and labor. See the Warranty card included in the box for complete warranty information.

## A

Accessing  
 eGuide ..... 3, 28  
 email ..... 4, 20  
 Net Guide ..... 16, 17  
 Net Tools ..... 16, 18  
 World Wide Web ..... 4, 19  
 eVilla Home ..... 16  
 File Manager ..... 23  
 Add to favorites ..... 19  
 Adding other users to your account ..... 14  
 Addresses icon (email) ..... 20  
 Attractions icon (Net Tools) ..... 16, 18  
 Audio out ..... 5  
 Audio icon (Net Tools) ..... 18  
 Automatic disconnect time ..... 15, 27

## B

Back icon (web) ..... 19

## C

Case sensitivity ..... 12  
 Changing settings ..... 21  
 Choosing  
 password ..... 12  
 telephone access number ..... 12  
 username ..... 11  
 Cleaning your device ..... 2  
 Compose icon (email) ..... 20  
 Connecting  
 additional accessories ..... 5, 29  
 external speakers ..... 5  
 external storage devices ..... 5  
 headphones ..... 5  
 keyboard ..... 5, 6  
 phone line ..... 5, 6  
 power cord ..... 5  
 printers ..... 5  
 scroll mouse ..... 5, 6  
 to the Internet ..... 5  
 Cursor ..... 8

## D

Dialing up ..... 15  
 Drafts icon (email) ..... 20

## E

Email  
 address ..... 11  
 button ..... 4  
 icons ..... 20  
 indicator ..... 4  
 tab (neighborhood) ..... 20  
 Entertainment (Net Guide) ..... 16, 17  
 eVilla login box ..... 14  
 eVilla Home  
 button ..... 4  
 personal start page ..... 19  
 tab ..... 22  
 eVilla Web site ..... 28  
 External speakers ..... 5, 30  
 External storage device ..... 4, 5, 23, 29

## F

Favorites icon (web) ..... 19, 26  
 File Manager ..... 23  
 Finance icon (Net Guide) ..... 16, 17  
 Font icon (web) ..... 19  
 Forward icon (web) ..... 19  
 File types ..... 23

## G

Go To text box (web) ..... 19  
 Going online ..... 15

## H

Hanging up ..... 22, 27  
 Hardware icons ..... 22, 24, 25  
 Home icon (web) ..... 219

## I

Inbox icon (email) ..... 20  
 Iomega USB Zip drive ..... 24

## K

Keyboard ..... 5, 6, 7



**L**

Learn the language	28, 32
Lifestyle icon (Net Guide)	16, 17
Load/Refresh icon (web)	19
Local icon (Net Guide)	16, 17
Log out icon	26
Logging in	14
Logging out	14, 22, 26

**M**

Mail, electronic	4, 11, 20
Media Player	23
Memory Stick slot	4, 9, 24

**N**

Net Guide icons and buttons	7, 16, 17
Net Tools	16, 18
News icon (Net Guide)	16, 17

**O**

Online tips icon	3, 19, 20, 28
Online/Offline indicator	15, 22, 27
Outbox icon (email)	20

**P**

Palm rest	7
Phone line splitter	6
Photos icon (Net Tools)	16, 18
Point and click	8
Power button	4, 9, 27
Power save	27
Previewing the features	9
Print icon	19, 25, 29
Printer	25
Providing payment information	13

**R**

Registering	
register icon	9, 10
your eVilla Internet access account	10
Reset hole	4, 31
Review the eGuide	34

**S**

Saving favorite Web sites or email drafts	26
Setup icon	22
Scroll mouse	5, 8
Shopping icon (Net Guide)	16, 17
Sony Memory Stick	24
Speaker, built-in	4
Speakers, additional	30
Specifications	35
Sports icon (Net Guide)	16, 17
Status Bar	22
System reset hole	4, 31

**T**

Telephone access number	12
Tips icon	3, 19, 20, 28
Toolbars	21
Tray	22, 23, 24
Turning off your eVilla device	27

**U**

USB ports	5, 29
USB printer	5, 25, 29
Username	11, 22
Using	
the Getting Started guide	3
the scroll mouse	8
the Net Guide	16, 17, 18
the Net Tools	16, 18

**V**

Video icon (Net Tools)	18
Volume buttons	4

**W**

Web	
button	4
icons	19
tab (neighborhood)	19
Welcome screen	9, 10
Working offline	15, 27

**Z**

Zip drive	24
-----------	----