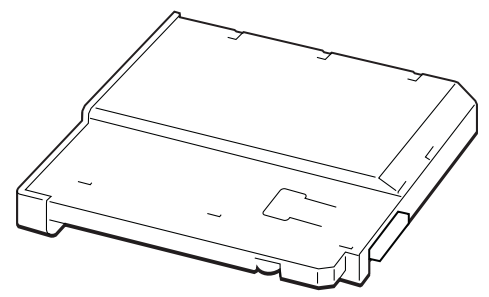


SERVICE MANUAL

US Model
Canadian Model
AEP Model
UK Model

PCGA-HD740 (UC/AEP/UK)



9-974-493-11 98x16xx-1

SONY®

4GB HARD DISK DRIVE KIT
SONY®

9-974-493-11

English
98x16xx-1
Printed in xxx
© 1998. x
xxx (xxx)

Sony Corporation
xxx

Information in this document is subject to change without notice.

Sony and VAIO are trademarks of Sony. Intel logo and Intel Inside logo are registered trademarks of Intel Corporation. Pentium MMX is a trademark of Intel Corporation. Microsoft, MS-DOS, Windows, the Windows 95 and Windows 98 logo are trademarks of Microsoft Corporation.

All other trademarks are trademarks or registered trademarks of their respective owners. Other trademarks and trade names may be used in this document to refer to the entitles claiming the marks and names or their produces. Sony Corporation disclaims any proprietary interest in trademarks and trade names other than its own.

Caution Markings for Lithium/Ion Battery - The following or similar texts shall be provided on battery pack of equipment or in both the operating and the service instructions.

CAUTION: Danger of explosion if battery is incorrectly replaced. Replace only with the same or equivalent type recommended by the manufacturer. Discard used batteries according to the manufacturer’s instructions.

CAUTION: The battery pack used in this device may present a fire or chemical burn hazard if mistreated. Do not disassemble, heat above 100°C (212°F) or incinerate. Dispose of used battery promptly. Keep away from children.

Ref.No.	Part No.	Description
		ACCESSORIES & PACKING MATERIALS *****
	3-864-558-01	MANUAL (2ND HDD) INSTRUCTION



Service and Inspection Precautions

1. Obey precautionary markings and instructions

Labels and stamps on the cabinet, chassis, and components identify areas requiring special precautions. Be sure to observe these precautions, as well as all precautions listed in the operating manual and other associated documents.

2. Use designated parts only

The set’s components possess important safety characteristics, such as noncombustibility and the ability to tolerate large voltages. Be sure that replacement parts possess the same safety characteristics as the originals. Also remember that the ⚠ mark, which appears in circuit diagrams and parts lists, denotes components that have particularly important safety functions; be extra sure to use only the designated components.

3. Always follow the original design when mounting parts and routing wires

The original layout includes various safety features, such as inclusion of insulating materials (tubes and tape) and the mounting of parts above the printer board. In addition, internal wiring has been routed and clamped so as to keep it away from hot or high-voltage parts. When mounting parts or routing wires, therefore, be sure to duplicate the original layout.

4. Inspect after completing service

After servicing, inspect to make sure that all screws, components, and wiring have been returned to their original condition. Also check the area around the repair location to ensure that repair work has caused no damage, and confirm safety.

5. When replacing chip components...

Never reuse components. Also remember that the negative side of tantalum capacitors is easily damaged by heat.

6. When handling flexible print boards...

- The temperature of the soldering-iron tip should be about 270C.
- Do not apply the tip more than three times to the same pattern.
- Handle patterns with care; never apply force.

Caution: Remember that hard disk drives are easily damaged by vibration. Always handle with care.

ATTENTION AU COMPOSANT AYANT RAPPORT À LA SÉCURITÉ!
LES COMPOSANTS IDENTIFÉS PAR UNE MARQUE ⚠ SUR LES DIAGRAMMES SCHÉMATIQUES ET LA LISTE DES PIÈCES SONT CRITIQUES POUR LA SÉCURITÉ DE FONCTIONNEMENT. NE REMPLACER CES COMPOSANTS QUE PAR DES PIÈSES SONY DONT LES NUMÉROS SONT DONNÉS DANS CE MANUEL OU DANS LES SUPPÉMENTS PUBLIÉS PAR SONY.

TABLE OF CONTENTS

<u>Section</u>	<u>Title</u>	<u>Page</u>
CHAPTER 1. SERVICE INFORMATION		1-1
		(to 1-1)
CHAPTER 2. REMOVAL		
2-1. HDD 4GB Assy, Door HDD Unit, HDD Adaptor Unit		2-1
		(to 2-1)
CHAPTER 3. SELF DIAGNOSTICS		
3-1. Required Tools and Peripheral Devices		3-1
3-2. How to Start the Diagnostics		3-1
		(to 3-1)
CHAPTER 4. EXPLODED VIEWS AND PARTS LIST		4-1
		(to 4-2)

- Abbreviations
UC : US model / Canadian model

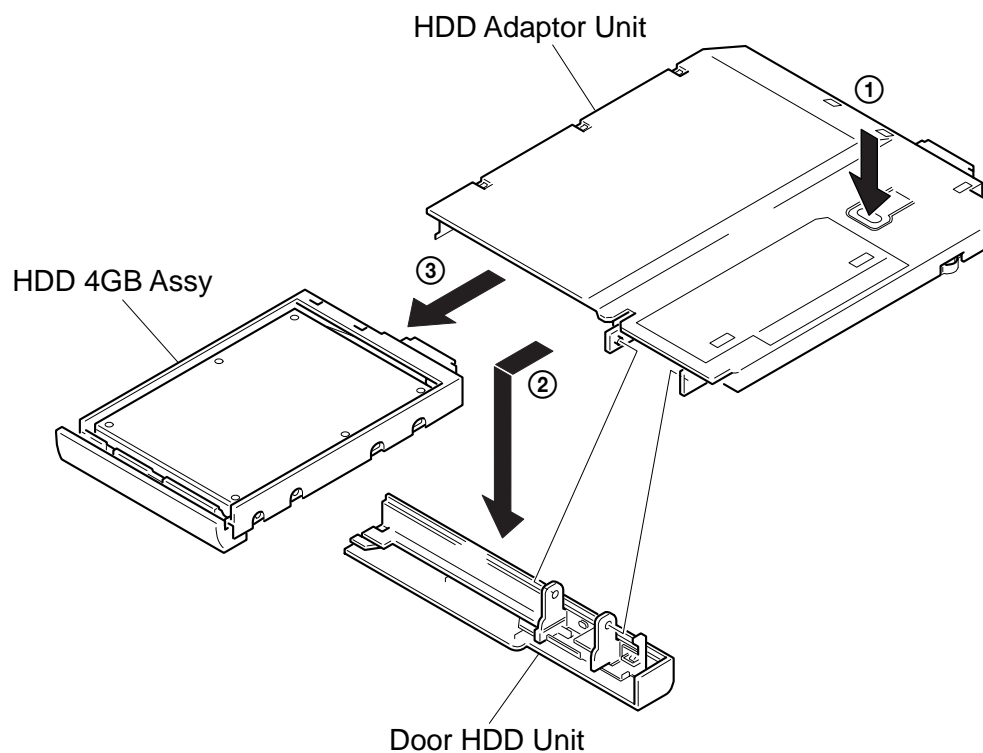
CHAPTER 1.

SERVICE INFORMATION

CHAPTER 2.

REMOVAL

2-1. HDD 4GB Assy, Door HDD Unit, HDD Adaptor Unit



3-1. Required Tools and Peripheral Devices

- VAIO Computer (any PCG-7xx/8xx series VAIO computer)
- FDD Drive
- FDD Cable
- AC Adaptor

3-2. How to Start the Diagnostics

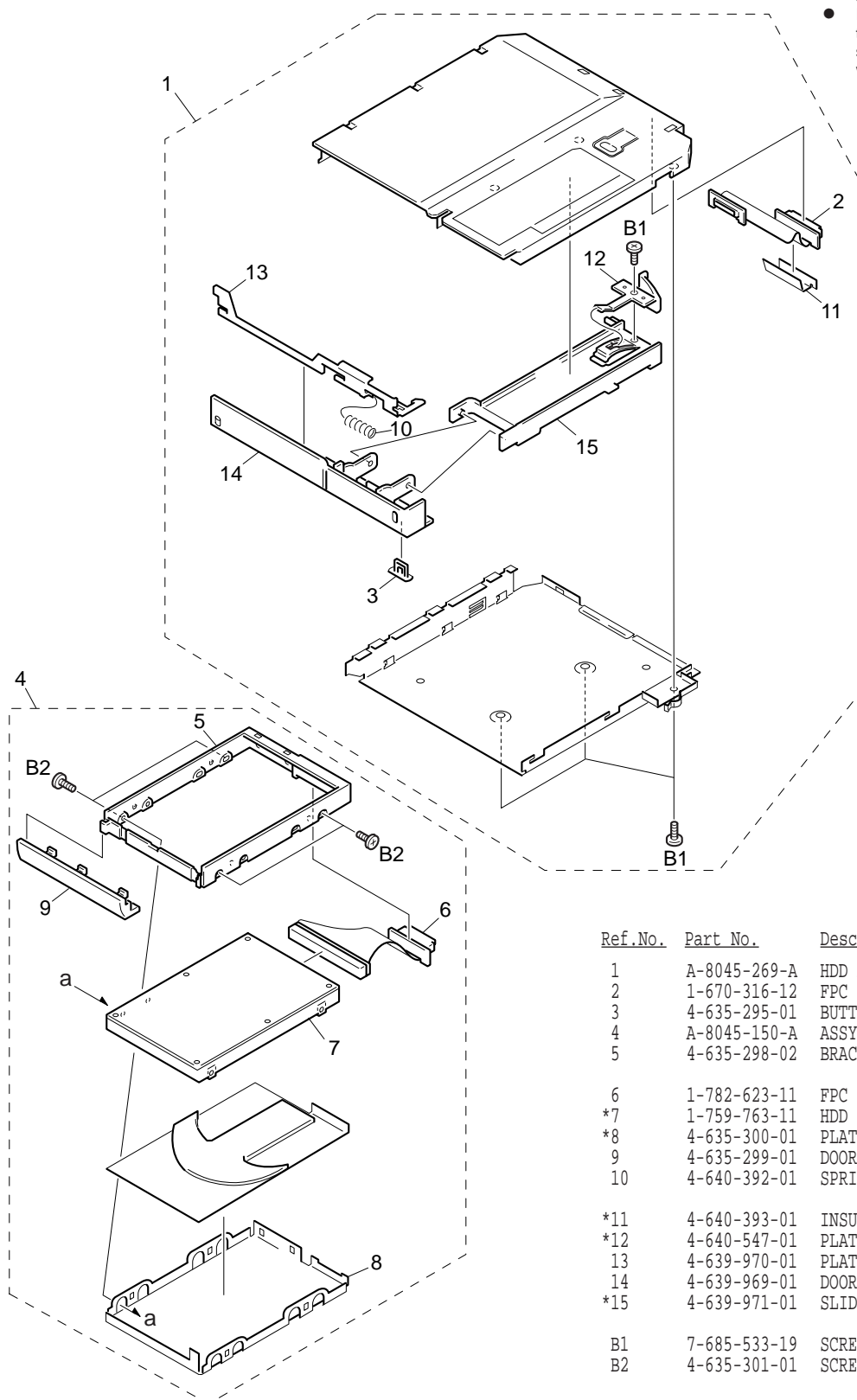
1. Insert the device to be diagnosed into the multi-purpose bay of the VAIO computer.
2. Connect an FDD drive to the VAIO computer using the parallel port.
3. Insert the diagnostics floppy disk into the FDD.
4. Turn on the main power of the VAIO computer.
5. The following checks are automatically performed:
 - Model name of HDD
 - Access to the entire area of the HDD by seek, write and read
6. If the diagnostics end without error (PASS), the message "Pass." appears on the display.
If the diagnostics find any errors (FAIL), the display turns red and the message "FAIL FAIL FAIL" appears.
7. The message "Press any key to shutdown" appears in both cases.
Press any key and the main power of the VAIO computer is turned off automatically.

CHAPTER 4.

EXPLODED VIEWS AND PARTS LIST

NOTE:

- The mechanical parts with no reference number in the exploded views are not supplied.
- Items marked "*" are not stocked since they are seldom required for routine service. Some delay should be anticipated when ordering these items.



Ref.No.	Part No.	Description
1	A-8045-269-A	HDD ADAPTOR ASSY (S)
2	1-670-316-12	FPC (BAY HDD)
3	4-635-295-01	BUTTON FD
4	A-8045-150-A	ASSY HDD MHC2040AT 4GB (U)(S)
5	4-635-298-02	BRACKET HDD
6	1-782-623-11	FPC (HDD)
*7	1-759-763-11	HDD (4.0GB)
*8	4-635-300-01	PLATE HDD
9	4-635-299-01	DOOR HDD
10	4-640-392-01	SPRING HDD2
*11	4-640-393-01	INSULATOR HDD2A
*12	4-640-547-01	PLATE LOCK
13	4-639-970-01	PLATE LATCH HDD2A
14	4-639-969-01	DOOR HDD2A
*15	4-639-971-01	SLIDE HDD2A
B1	7-685-533-19	SCREW +B 2.6X6, TYPE 2 N-S
B2	4-635-301-01	SCREW M3X4