

SONY®

***VAIO® FX All-in-One
Notebook Quick Start***

PCG-FX410 and PCG-FX400 Series


Welcome	5
Unpacking Your Notebook	7
Registering Your Notebook	9
Setting up your dial-up connection	10
 Setting Up Your VAIO Notebook	 13
Locating Controls and Ports	14
Connecting a Power Source	19
Starting Your Notebook	25
Shutting Down Your Notebook	26
Power Saving Modes	27
 Adding Memory to Your VAIO Notebook	 29
Precautions and Procedures	30
Removing a Memory Module	32
Installing a Memory Module	34
Viewing the Amount of Memory	36
 About the Software on Your Notebook	 37
Software Overview	38
Application, Driver, and System Recovery CDs	44
Using Your Recovery CDs	45
 Troubleshooting	 51
 Getting Help	 57
Support Options	58
Software Support Information	60
Sony Service Center	62
 Index	 63

Welcome

Congratulations on your purchase of the Sony VAIO® FX all-in-one Notebook. Sony has combined leading-edge technology in audio, video, computing, and communications to provide you with state-of-the-art personal computing.

Features

Here are just some of the features your VAIO® computer has to offer:

 For a complete description of the specifications of your VAIO® Notebook, refer to the Specifications flyer supplied with your notebook.

- ❑ **Exceptional performance** — Your notebook includes an Intel® processor,* and a V.90-compatible modem.† To optimize performance and portability, Sony has implemented speed controlling technology designed to maximize battery life during mobile computer use. Windows® reported actual CPU speed may not reflect the maximum speed.‡
- ❑ **Portability** — Rechargeable battery pack provides hours of use without AC power.
- ❑ **Sony audio and video quality** — High-quality MPEG1/MPEG2 video, which supports full-screen display and enables you to take advantage of today's advanced multimedia applications, games, and entertainment software.
- ❑ **Multimedia features** — Enjoy the built-in stereo speakers or use headphones (not supplied) to listen to audio and video CDs.

* The CPU speed will be reduced under certain operating conditions.

† Actual upload and download speeds may vary due to line conditions, Internet Service Provider (ISP) support, and government regulations.

‡ Depending on the specific model you purchased, speed controlling technology may not be present.

- ❑ **Microsoft® Windows® operating system** — Your system includes the Microsoft® Windows® operating system.
- ❑ **Communications** — Access popular online services, send and receive e-mail, browse the Internet, and use fax features.
- ❑ **Optical disc drive (CD-RW/DVD or DVD-ROM)** — The CD-RW/DVD Combo Drive utilizes a new optical storage technology that combines the features of both a CD-RW drive and DVD-ROM drive, providing increased storage capacity and a rich multimedia computing experience. Optical drives play DVD-ROM, CD-ROM, CD-RW, and CD-R discs. (The CD-RW/DVD Combo Drive is available on selected models only.)

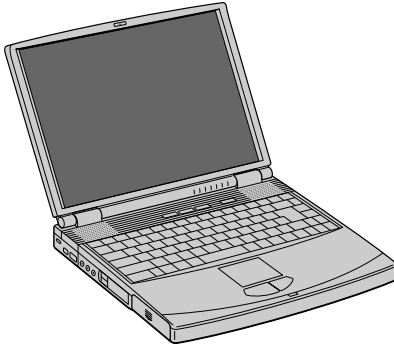


Your computer's optical disc drive and other components may differ depending on the specific model you purchased. See the Specifications flyer for details.

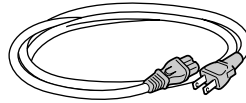
Unpacking Your Notebook

Remove the following hardware items from the box:

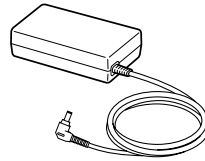
Main unit*



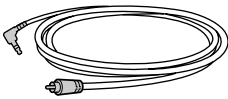
Power cord



AC adapter



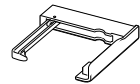
Video cable



**Rechargeable
battery pack**



Weight saver



* Removable floppy disk drive is in the multipurpose bay.

Documents

- ❑ **VAIO® Notebook User Guide** — A searchable online help file that contains detailed information on how to use your new notebook. (Windows XP) Press Start on the Windows® taskbar, select VAIO Help and Support, and click VAIO User Guide to open this file. (Windows 2000) Press Start, select VAIO Help Center, and VAIO Documentation.
- ❑ **VAIO® Notebook Quick Start** — Contains information on unpacking and setting up your notebook, the features of your notebook, the applications included with your system, and how to solve common problems.
- ❑ **Microsoft® Windows® Getting Started guide** — Explains how to use the basic features of the Windows operating system installed on your computer.

- ❑ **Notes on Use** — Explains notes on using your notebook and offers safety tips.
- ❑ **Specifications Flyer** — Details the hardware specifications for your notebook.

Software CDs

- ❑ **Microsoft® Word** — Enables you to reinstall Microsoft Word to the VAIO computer you purchased, if the application becomes corrupted or is erased.

Recovery CDs

- ❑ **Application Recovery CD(s)** — Enables you to reinstall individual applications if they become corrupted or are erased.
- ❑ **Driver Recovery CD(s)** — Enables you to reinstall individual device drivers if they become corrupted or are erased.
- ❑ **System Recovery CD(s)** — Enables you to restore the operating system and software that shipped with your computer, to its original factory settings, if they become corrupted or are erased.

Other

- ❑ Packet containing special product offers
- ❑ Limited Warranty card

Registering Your Notebook

Take advantage of Sony's commitment to quality customer support and receive these benefits by registering your notebook:

- ❑ **Sony Customer Support** — Talk to a Support Representative to troubleshoot problems you may be having with your notebook.
- ❑ **Limited Warranty** — Protect your investment. See the Warranty Card for more details.



You are prompted to register your computer the first time you turn on the unit. Follow the on-screen instructions to complete the registration process. If you are not able to register your computer during the first session, you are provided with additional registration opportunities later.

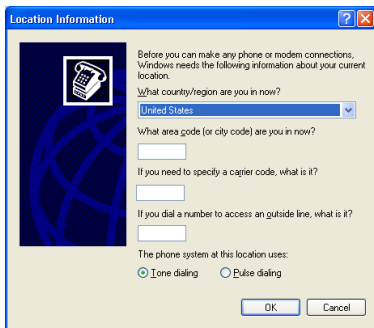
Setting Up Your Dial-up Connection

This section describes the basic steps for setting up your dial-up connection. The Connection Wizard guides you through the process of connecting to the Internet and then choosing an Internet Service Provider (ISP) or setting up an existing account.

Setting up your Internet connection

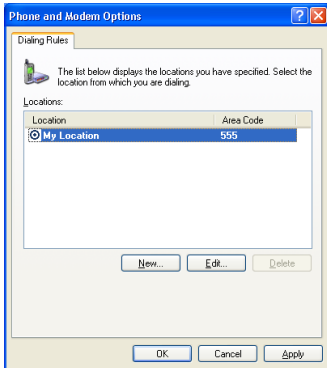
- 1 Click Start, point to All Programs, Accessories, Communications, and then click New Connection Wizard. The Location Information screen appears.

Location Information screen



- 2 Follow the instructions onscreen and then click OK to continue. The Phone and Modem Options screen appears.

Phone and Modem Options screen



- 3 Select the location from where you are dialing and then click OK. The New Connection Wizard appears.

New Connection Wizard



- 4 Follow the onscreen instructions to finish setting up your dial-up connection.

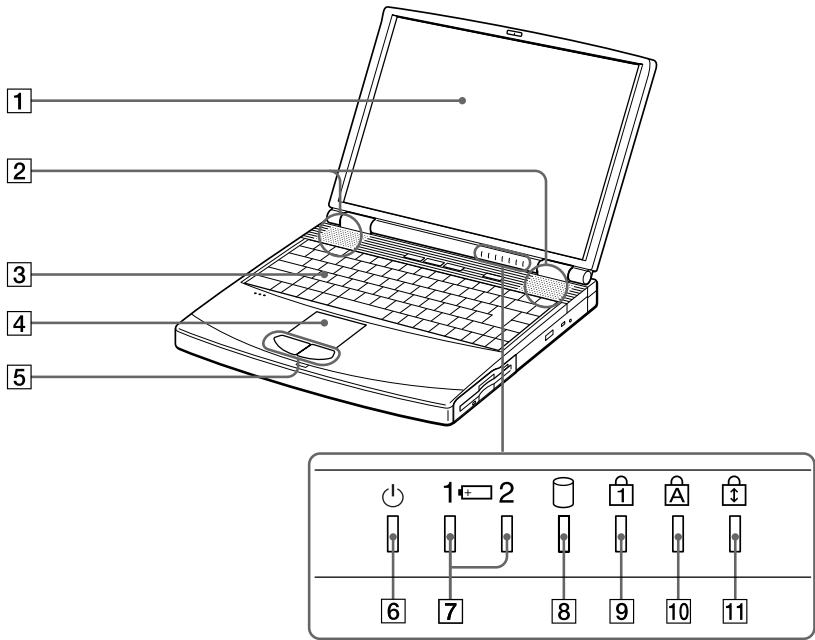
Setting Up Your VAIO Notebook

This section describes the following:

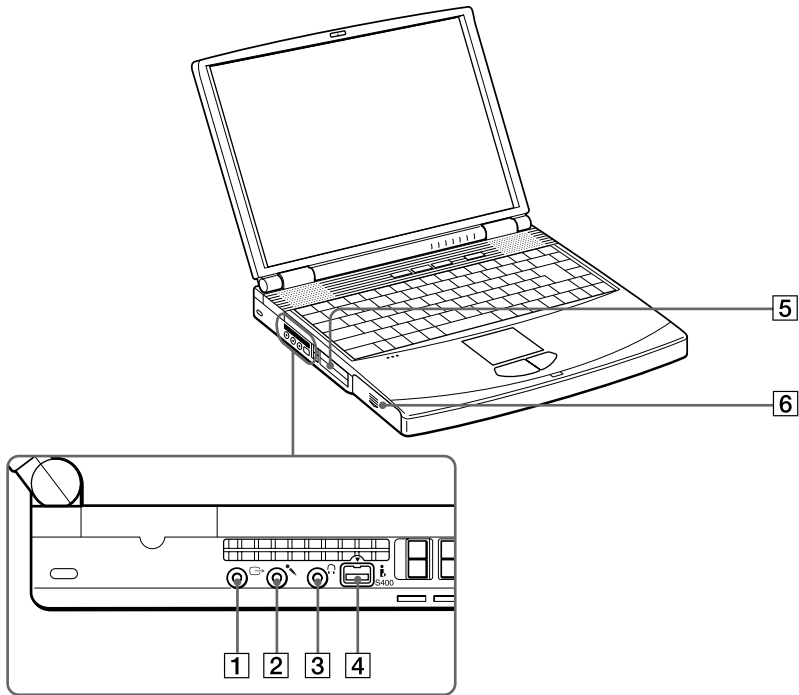
- ☐ Locating Controls and Ports
- ☐ Connecting a Power Source
- ☐ Starting Your Notebook
- ☐ Shutting Down Your Notebook
- ☐ Power Saving Modes

Locating Controls and Ports

Front



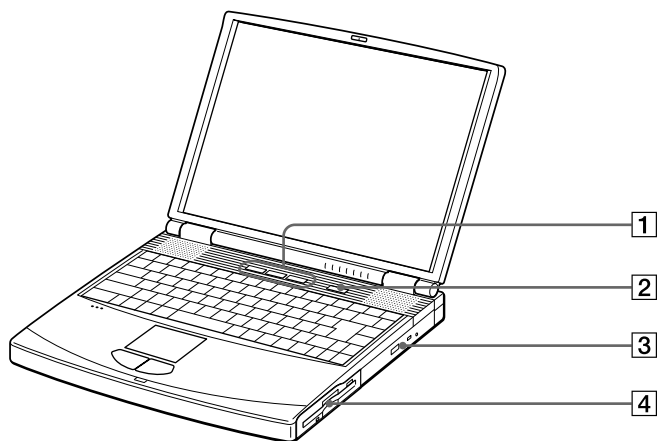
1	LCD (Liquid Crystal Display) screen	7	Battery 1 and 2 indicators
2	Speakers	8	Hard disk drive indicator
3	Keyboard	9	Num Lock indicator
4	Touchpad	10	Caps Lock indicator
5	Left and right buttons	11	Scroll Lock indicator
6	Power indicator		

Left

1	TV out jack	4	i.LINK® (IEEE 1394) S400 port*
2	Microphone jack	5	PC Card slots
3	Headphone jack	6	Battery bay

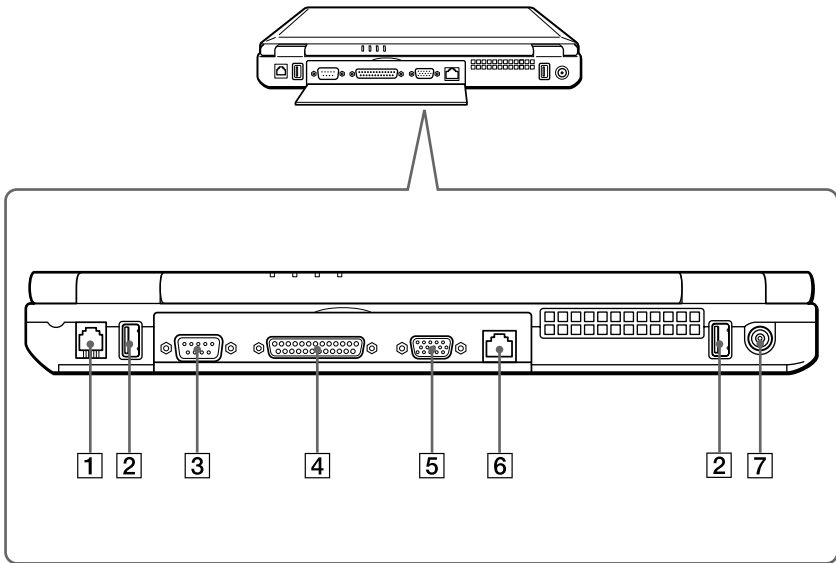
* i.LINK is a Sony trademark used only to designate that a product contains an IEEE 1394 connection. The i.LINK connection may vary, depending on the software applications, operating system, and compatible i.LINK devices. All products with an i.LINK connection may not communicate with each other. Refer to the documentation that came with your compatible i.LINK device for information on operating conditions and proper connection. Before connecting compatible i.LINK PC peripherals to your system, such as a CD-RW or hard disk drive, confirm their operating system compatibility and required operating conditions.

Right



- | | |
|---|--|
| 1 | Programmable Power Key (PPK) buttons |
| 2 | Power button |
| 3 | Optical drive (CD-RW/DVD Combo Drive or DVD-ROM drive [*]) |
| 4 | Multipurpose bay |

^{*} The type of optical drive differs depending on the specific model you purchased.

Back

1	Modem port	5	Monitor port
2	USB ports	6	Ethernet port
3	Serial port	7	DC In port
4	Printer port		

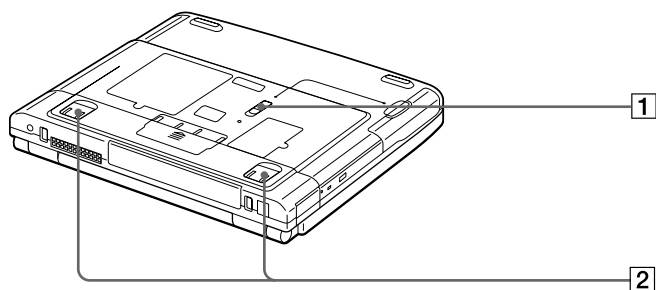


Only connect 10BASE-T and 100BASE-TX cables to the Ethernet port. Do not connect any other type of network cable or any telephone line. Connecting cables other than those listed above may result in an electric current overload and could cause a malfunction, excessive heat, or fire in the port. To connect the unit to the network, contact your network administrator.



There is a ventilation slot located between the Ethernet port and the USB port. Do not cover the ventilation slot when your notebook is on.

Bottom



-
- | | |
|---|--------------------------------|
| 1 | Multipurpose bay release lever |
| 2 | Tilt stands |
-

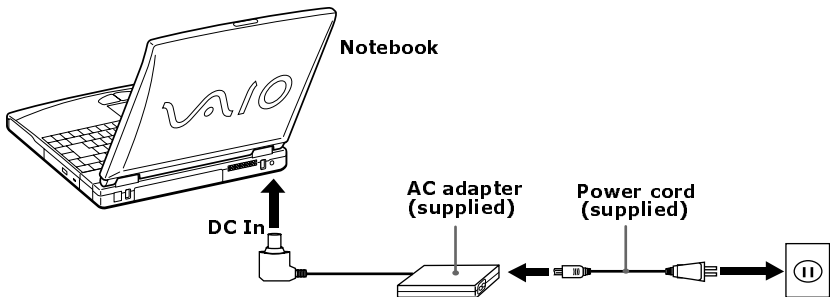
Connecting a Power Source

You can use either AC power or a rechargeable battery pack as a power source.

Using the AC Adapter

- 1 Plug the cable attached to the AC adapter into the DC In port on the notebook.
- 2 Plug one end of the power cord into the AC adapter.
- 3 Plug the other end of the power cord into an AC outlet.

Connecting the AC adapter



Notes on the AC Adapter

- ❑ Your notebook operates on 100V-240V AC 50/60 Hz.
- ❑ Do not share the AC outlet with other power-consuming equipment, such as a copy machine or shredder.
- ❑ You can purchase a power strip with a surge protector. This device prevents damage to your notebook caused by sudden power surges such as those that may occur during an electrical storm.
- ❑ Do not place heavy objects on the power cord.
- ❑ To disconnect the cord, pull it out by the plug. Never pull the cord itself.
- ❑ Unplug your notebook from the wall outlet if you will not be using the notebook for a long time.
- ❑ The LED indicator on the AC adapter may stay on until the AC adapter is unplugged from your notebook.

- ❑ When the AC adapter is not used, unplug it from the wall outlet.
- ❑ Use only the AC adapter supplied. Do not use any other AC adapter.

Using Battery Power

You can use one or two battery packs as a source of power. The second battery pack inserts into the multipurpose bay on the right side of the notebook. (See “Using a Second Battery Pack” in your online User Guide for more information.) Additional battery packs are available as a separate option.

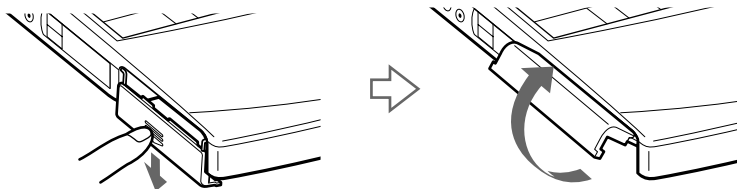
The battery pack that comes with your notebook is not fully charged at the time of purchase. Follow the steps below to insert and charge the battery pack.

To insert the battery pack

- 1 Locate the battery bay on the left side of the notebook and push the cover down to open it.

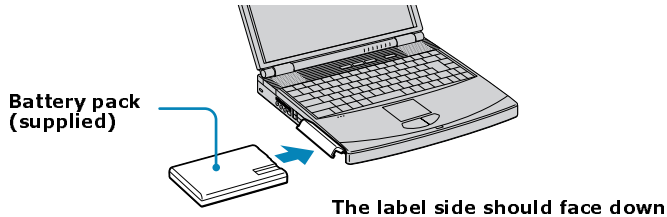
 The cover swings out but does not detach.

Battery bay



- 2 Insert the battery pack into the battery bay.

Inserting battery pack



- 3 Push the battery bay cover up until it clicks.



If the port replicator is attached to your notebook, do not attempt to insert or remove the battery pack. Lifting and turning the notebook with a port replicator attached could cause a temporary loss of power.

To charge the battery pack

- 1 Connect the AC adapter to the notebook.
- 2 Insert the battery pack.

The notebook automatically charges the battery. The battery indicator flashes in a double-blink pattern as the battery charges.

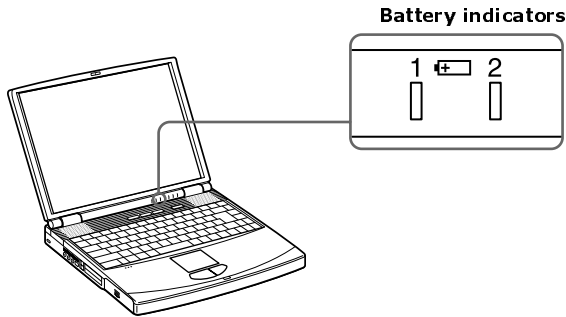
- 3 When the battery is 85 percent full, the battery indicator turns off. This process takes several hours. It takes longer to recharge the battery when the notebook is turned on than when it is turned off.

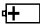
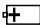


To charge the battery completely, continue charging for an additional hour. See “Displaying Battery Information” in your online User Guide for more information.

There are two battery indicators on the notebook

Battery indicators



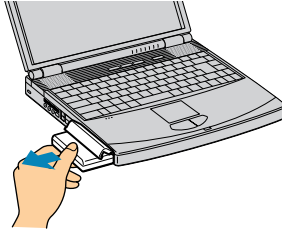
<i>Battery Indicator</i>	<i>Description</i>
1 	Indicates the status of the battery pack in the battery bay on the left side of the notebook.
2 	Indicates the status of the battery pack in the multipurpose bay on the right side of the notebook.

<i>Battery Indicator Light Status</i>	<i>Description</i>
On	The notebook is using battery power.
Single blink	The battery is running out of power.
Double blink	The battery is charging.
Off	The notebook is using AC power.

To remove the battery pack

- 1 Open the battery bay cover.
- 2 Pull out the battery pack.

Removing the battery pack



- 3 Push the battery bay cover up until it clicks.



You will lose data if you remove the battery pack while the notebook is on and not connected to the AC adapter, or if you remove the battery while the notebook is in a power saving mode.

Notes on the battery

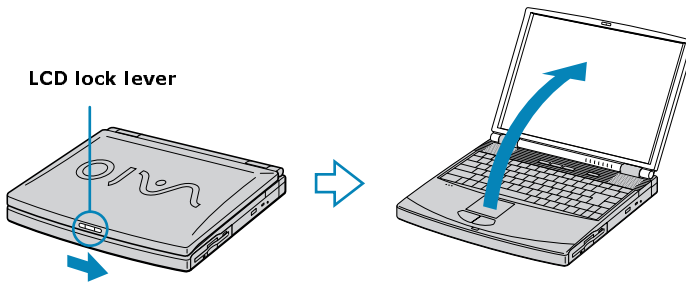
- ❑ To determine the remaining battery charge, see “Displaying Battery Information” in your online User Guide for more information.
- ❑ When the battery power is running low, both the battery and power indicators blink.
- ❑ When the notebook is directly connected to AC power and has a battery pack in the battery bay, it uses power from the AC outlet.
- ❑ See “Using a Second Battery Pack” in your online User Guide for information on installing and charging a battery pack in the multipurpose bay.
- ❑ Keep the battery pack in the notebook while it is directly connected to AC power. The battery pack continues to charge while you are using the notebook.

- ❑ If the battery level falls below 10 percent, you should either attach the AC adapter to recharge the battery, or shut down your notebook and insert a fully charged battery.
- ❑ You can extend battery life by changing the power management modes in the PowerPanel utility. See “Power Saving Modes” on page 27 for more information.
- ❑ The battery pack supplied with your notebook is a lithium-ion battery and can be recharged at any time. Charging a partially discharged battery does not affect battery life.
- ❑ The battery indicator is on while you use the battery pack as a power source. When battery life is nearly depleted, the battery indicator starts flashing.
- ❑ For some software applications and some peripheral devices, your notebook may not enter Hibernate mode when the battery life is low. To avoid loss of data when using battery power, you should save your data frequently and manually activate a power management mode, such as Standby or Hibernate.
- ❑ Never leave the battery pack in temperatures above 140° F (60° C), such as under direct sunlight or in a car parked in the sun.
- ❑ Battery life is shorter in a cold environment. This is due to decreased battery efficiency at low temperatures.
- ❑ Charge the batteries at temperatures between 50° F and 80° F (10 °C to 30° C). Lower temperatures require a longer charging time.
- ❑ While the battery is in use or being discharged, the battery pack heats up. This is normal and is not cause for concern.
- ❑ Keep the battery pack away from all sources of heat.
- ❑ Keep the battery pack dry.
- ❑ Do not open or try to disassemble the battery pack.
- ❑ Do not expose the battery pack to any mechanical shock.
- ❑ If you are not using the notebook for an extended period of time, remove the battery pack from the notebook to prevent damage to the battery.
- ❑ If, after fully charging the battery pack, the battery power is still low, the battery pack may be reaching the end of its life and should be replaced.
- ❑ You do not need to discharge the battery before recharging.
- ❑ If you have not used the battery pack for a considerable amount of time, recharge the battery.

Starting Your Notebook

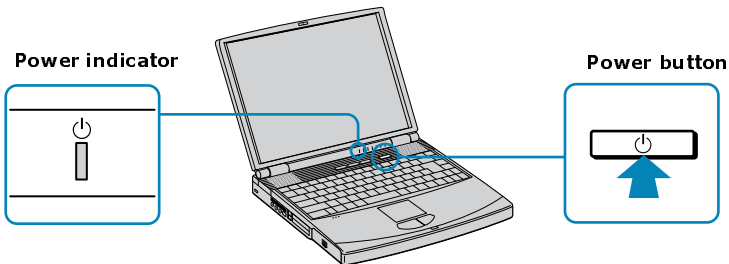
- 1 Slide the LCD lock lever in the direction of the arrow and lift the cover.

Opening the notebook



- 2 Press the power button on top of the notebook until the green power indicator turns on.

Power button



 If you hold the power button in the On position for more than four seconds, the notebook turns off.

- 3 If necessary, adjust the brightness controls for the LCD display as follows:
 - ☐ To decrease brightness, press Fn+F5 then the down or left arrow key.
 - ☐ To increase brightness, press Fn+F5 then the up or right arrow key.

Shutting Down Your Notebook



To avoid potential loss of data, follow these steps to shut down your notebook.

- 1 Click Start on the Windows® taskbar.
- 2 Click Turn Off Computer at the bottom of the Start menu to display the “Turn off computer” dialog box.
- 3 Select Turn Off.



Respond to any prompts warning you to save documents.

- 4 Wait for your notebook to turn off automatically. The notebook is off when the power indicator turns off.
- 5 Turn off any peripherals connected to your notebook.



During a period of inactivity, you can conserve battery life by using Standby mode. See “Controlling Power Management” in your online User Guide for more information.

If you are unable to shut down your notebook:


- 1 Close or end all operations as follows:
 - ☐ Close all applications.
 - ☐ Remove the PC Cards.
 - ☐ Disconnect all USB devices.
- 2 Restart the notebook. You can restart your notebook by pressing the Ctrl+Alt+Delete keys simultaneously. The Windows Task Manager dialog box appears, and you can turn off the computer from the Shut Down menu.



If you are still unable to shut down the notebook, you can press the power button and hold it for at least four seconds. This operation may result in data loss.

Power Saving Modes

When you use a battery as the source of power for your notebook, you can take advantage of power management settings to conserve battery life. In addition to the normal operating mode, which allows you to turn off specific devices, your notebook has two distinct power saving modes: Standby and Hibernate. When using battery power, be aware that the notebook automatically enters Hibernate mode when the remaining battery charge drops below 5 percent, regardless of the power management setting you select.

 If the battery level falls to less than 10 percent, you should either attach the AC adapter to recharge the battery, or shut down your notebook and insert a fully charged battery.

Normal Mode

Normal mode is the normal state of your notebook when it is in use. The power indicator displays green when your notebook is in this mode. To save power, you can turn off a specific device such as the LCD or the hard disk drive.

Standby Mode

In Standby mode the notebook saves the current state of the system in RAM and switches off power to the CPU. The amber power indicator flashes in this mode.

To activate Standby mode

To activate Standby mode, press the key combination Fn+Esc. You can also use the PowerPanel utility to enter Standby mode.

To return to normal mode

Press any key to return to normal mode.

Hibernate Mode

In the Hibernate mode, the state of the system is saved on the hard disk drive and power is turned off. The power indicator is off in this mode.

To activate Hibernate mode

To activate Hibernate mode, press the key combination Fn+F12, or press the power button and release it immediately.



Do not move the notebook until its power indicator turns off.

To return to normal mode

To return to normal mode, turn on the notebook by pressing the power button. The notebook returns to its previous state.



When returning from Hibernate mode, the system status stored on the hard disk drive is erased and the notebook starts normally if you press the power button and hold it for at least four seconds.

- ☐ Time required to return to normal mode
Standby requires less time than Hibernate to return to normal mode.
- ☐ Power consumption
Standby uses more power than Hibernate.

Adding Memory to Your VAIO Notebook

In the future you may want to install memory modules to expand the functionality of your notebook. The amount of memory on your notebook will vary depending on the model you purchased. See the Specifications flyer supplied with your notebook for the amount of memory pre-installed. Expansion memory modules are available as options. For memory upgrades, use only unbuffered PC100 (CL2) SDRAM SO-DIMM (gold lead contacts). This section describes how to replace memory modules in your computer:

- ☐ Precautions and Procedures
- ☐ Removing a Memory Module
- ☐ Installing a Memory Module
- ☐ Viewing the Amount of Memory

Precautions and Procedures

The procedures described below assume you are familiar with the general terminology associated with personal notebooks and with common safety practices required for using and modifying electronic equipment. Personal injury or equipment damage may result from failure to take these precautions.



Observe the proper safety precautions when installing memory modules in your notebook. See the bulleted list below. Use care when adding memory. Mistakes made when installing or removing a memory module may cause a malfunction.

- ❑ Disconnect your system from its power source and from any telecommunications links, networks, or modems before you open the system.
- ❑ Electrostatic discharge (ESD) can damage memory modules and other components. Perform the procedures described below only at an ESD workstation. If such a station is not available, do not work in a carpeted area, and do not handle materials that produce or hold static electricity (cellophane wrappers, for example). Ground yourself by maintaining contact with an unpainted metal portion of the chassis while performing the procedure.
- ❑ Do not open the memory module package until you are ready to install the module. The package protects the module from ESD.
- ❑ Use the special bag for preventing ESD or use aluminum foil when you store the memory module.

Typical expansion memory configuration

To determine the exact amount of memory pre-installed on your computer, refer to the Specifications flyer supplied with your computer.



Depending on the specific model you purchased, a single 256 MB memory module or two 128 MB memory modules may be preinstalled.

Models with 128 MB memory

Total System Memory (MB)	Slot 1 (MB)	Slot 2 (MB)
128	128	
192	128	64
256	128	128
384*	256	128
512*	256	256

* The 384 MB and 512 MB memory configurations may require the removal and replacement of original factory-installed memory modules.

Models with 256 MB memory

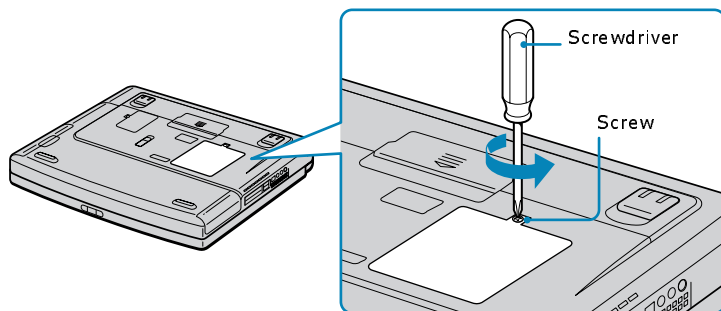
Total System Memory (MB)	Slot 1 (MB)	Slot 2 (MB)
256	256	
384*	256	128
512*	256	256

* The 384 MB and 512 MB memory configurations may require the removal and replacement of original factory-installed memory modules.

Removing a Memory Module

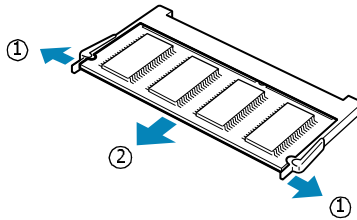
- 1 Shut down your notebook and disconnect all peripheral devices, such as your printer.
- 2 Unplug the notebook and remove the battery pack(s).
- 3 After the notebook has cooled, loosen and remove the screw that secures the cover of the memory bay on the bottom of your notebook. Use an appropriate screwdriver.

Removing the memory module cover



- 4 Touch a metal object (such as the connector panel on the back of your notebook) to discharge any static electricity.
- 5 Remove the memory module.

Removing memory module



① Pull the tabs in the direction of the arrows.
The memory module is released.

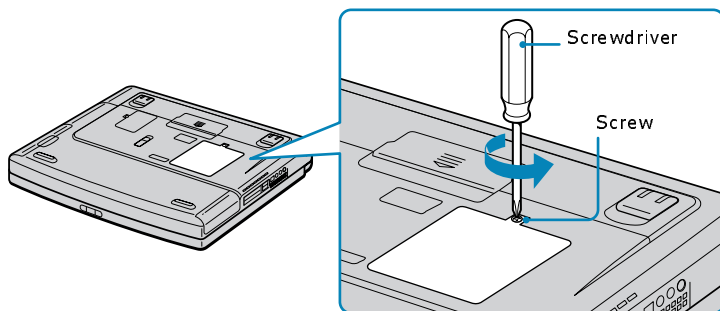
② Pull the memory module in
the direction of the arrow.

- 6 Replace the memory bay cover.
- 7 Tighten the screw on the memory bay cover.

Installing a Memory Module

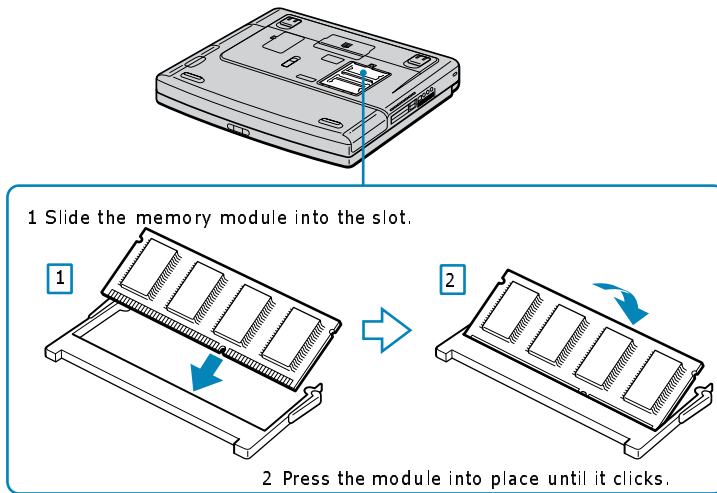
- 1 Shut down your notebook and disconnect all peripheral devices, such as your printer.
- 2 Unplug the notebook and remove the battery pack(s).
- 3 After the notebook has cooled, loosen and remove the screw that secures the cover of the memory bay on the bottom of your notebook. Use an appropriate screwdriver.

Removing the memory module cover



- 4 Touch a metal object (such as the connector panel on the back of your notebook) to discharge any static electricity.
- 5 Remove the memory module from its packaging.
- 6 Slide the memory module into the empty slot.
- 7 Press the module into place until it clicks.

Installing memory module



- 8 Replace the memory bay cover.
- 9 Tighten the screw on the cover of the memory bay.

Viewing the Amount of Memory

- 1** Restart the notebook.
- 2** Click Start on the Windows® task bar, select All Programs, and click “Sony Notebook Setup.” The Sony Notebook Setup screen appears.
- 3** Click the “About This Computer” tab to view the amount of system memory. If the additional memory is not shown, remove and reinstall the memory module.



The amount of memory displayed in the Sony Notebook Setup screen is not always correct. The video adapter uses some system memory, and that amount of memory does not appear as part of the total memory shown in the Sony Notebook Setup screen.

About the Software on Your Notebook

Your VAIO® Notebook is ready to help you work, play, learn, and communicate as soon as you turn it on. This section provides the following information:

- ❑ An overview of the various software that come with your notebook and the activities you can perform with your software
- ❑ Details on your Sony application, driver, and system recovery CDs

Software Overview

Your computer may not be supplied with all of the software listed below, depending on the configuration you purchased. Preinstalled software may not be identical to retail versions, or include supporting documentation.

Adobe® Acrobat® Reader®

Adobe Systems Inc.

Acrobat Reader software enables you to view, navigate, and print electronic documents in Adobe Portable Document Format (PDF), an open file format that is intended to preserve the fidelity of documents created on all major computer platforms.

Adobe® Photoshop® Elements (On selected models)

Adobe Systems Inc.

Using state-of-the-art image editing tools, you can unleash your artistic ability and create digital images for print, e-mail and posting to the Web. The versatile image capturing options allow you to start working with digital and traditional photos immediately. Explore endless creative possibilities for your personal images with Adobe Photoshop Elements.

America Online®

America Online, Inc.

America Online is a popular Internet online service. Stay in touch with family and friends with easy-to-use e-mail. Manage your personal finances, get the latest news and sports scores, and chat with thousands of others who share your interests.

Apple QuickTime™

Apple Computer, Inc.

QuickTime is the Apple technology that makes video, sound, music, 3D, and virtual reality come alive for our Internet browser and Windows.

ArcSoft PhotoPrinter® 2000 Pro

ArcSoft, Inc.

ArcSoft PhotoPrinter Pro software is an easy-to-use, yet advanced printing program that lets you quickly lay out multiple images in multiple sizes on a single sheet of paper. ArcSoft PhotoPrinter Pro software offers a wide selection of templates including landscape, portrait, free-style, mixed sizes, custom templates and more. The application includes enhancement tools and special effects for improving photos while giving you the ability to add text to any image. With ArcSoft PhotoPrinter 2000 Pro software you can create business cards, handouts, calendars, mailing labels, and much more.

DigitalPrint

Sony Electronics Inc.

This image management software makes it fun and easy to edit, import, and organize your digital pictures in a photo album for rich digital printing to any standard color laser or inkjet printer. DigitalPrint can also be used to make custom CD labels for your audio CDs.

DVgate™

Sony Electronics Inc.

Connect a compatible digital video camera recorder to the i.LINK®* connector and capture your own video clips and still images. You can edit clips from your video, add others, and combine clips into new movie segments. You can also save your images in a variety of popular file formats.

EarthLink Network Total Access®

EarthLink, Inc.

An Internet Service Provider that supplies access, information, and assistance to its customers, introducing them to the Internet. Member benefits include e-mail, newsgroups, a Personal Start Page, free storage space for your personal Web site, a member magazine, and 24-hour technical support.

* i.LINK is a Sony trademark used only to designate that a product contains an IEEE 1394 connection. The i.LINK connection may vary, depending on the software applications, operating system, and compatible i.LINK devices. All products with an i.LINK connection may not communicate with each other. Refer to the documentation that came with your compatible i.LINK device for information on operating conditions and proper connection. Before connecting compatible i.LINK PC peripherals to your system, such as a CD-RW or hard disk drive, confirm their operating system compatibility and required operating conditions.

Microsoft® Internet Explorer

Microsoft Corp.

Internet Explorer delivers the Web the way you want it. It is safe, easy to use, and you can personalize how you access the Web. Outlook Express and other tools in Internet Explorer also help you have a great experience when you are on the Web.

Microsoft® Office XP Professional (On selected models)

Microsoft Corp.

Microsoft Office XP redefines the relationship between people and software by providing a smarter, simpler way of working. New Office XP features include context-sensitive smart tags, enhanced formatting options, and more, that enable you to continually integrate additional services into Office and access information anytime.

Microsoft® Office XP Small Business (On selected models)

Microsoft Corp.

With Microsoft Office XP you'll find a powerful new technology that will help you get work done more quickly by providing real-time, context-sensitive options for important actions, from formatting to error correction. Task panes consolidate important tasks into a single integrated view, enabling you to conduct searches, launch and format documents, and view the contents of your Clipboard from one location.

Microsoft® Word

Microsoft Corp.

Microsoft Word makes it easy to create shared Web, e-mail, and print documents for use around the world. It embraces HTML as a first-class file format and extends Word's ease-of-use to the Web and e-mail. Word also extends that ease-of-use to international users, making it simple to create multilingual documents.

MovieShaker™

Sony Electronics Inc.

Sony's original MovieShaker software creates personal movies that have transitions, background music and text. Just import your video clips and "shake" with a click of the mouse. Your personal movies are easy to create and fun to share with family and friends.

PC-Cillin®*Trend Micro, Inc.*

PC-Cillin provides portable, easy-to-use, real-time antivirus security at your computer's entry point (beaming, synchronization, Internet access) to defend against potential threats hidden inside files, e-mail, or on the Web.

PictureGear™*Sony Electronics Inc.*

This image management software displays images from your hard drive, a Sony digital still camera, or a Sony Mavica® camera. The images appear in a convenient light-table format, so that you can easily view the contents of an entire folder.

Quicken®*Intuit Inc.*

Quicken is a fast, easy way to organize your finances. Quicken works just like your checkbook, so it is easy to learn and use. Quicken manages all your finances, bank accounts, credit cards, investments, and loans. You can even pay your bills online.

RealJukebox®*Real Networks Inc.*

RealJukebox is one of the world's most widely used personal music management systems. Using RealJukebox, you can capture the contents of a music CD, manage and play back your music, and view various music-related information via the Internet. This Custom RealJukebox for Sony allows seamless check-out capabilities to a wide range of Sony personal audio devices, and offers convenient links to Sony product and music service home pages.



If you are using an external CD-ROM drive connected with a PC Card, be sure to connect your external CD-ROM drive before starting RealJukebox. Additionally, do not remove your CD-ROM drive while using RealJukebox. Either of these actions may cause RealJukebox to shut down improperly.

RealPlayer®*Real Networks Inc.*

RealPlayer is the RealNetworks video and audio player which lets you access 2,500 radio stations featuring music, news and sports.

Smart Capture

Sony Electronics Inc.

Smart Capture is a fun new way to send multimedia messages via e-mail. Smart Capture manages the i.LINK®* connection between your computer and a Sony Digital Handycam® Camcorder that supports the i.LINK interface. It allows you to capture compressed video or still images that you can save or share via e-mail. A smart solution to computer, digital audio/video and network convergence.

SonicStage

Sony Electronics Inc.

This new jukebox application adds a host of new features to its predecessor, OpenMG™ Jukebox. Continuing to take advantage of Sony's copyright-protected ATRAC3™ format for high-quality digital audio storage, SonicStage sports a new Music Visualizer, a sleek new player skin design, audio CD burning capability, and a parametric equalizer for fine-tuning audio playback.

Sony onYahoo!

Yahoo! Inc.

Personalize your own web portal with Sony on Yahoo! Get a free webmail account, customized news and local weather reports, comics, and more.

SonyStyle ConnectSM

Sony Electronics Inc.

SonyStyle Connect provides excellent dial-up, as well as DSL, Internet connection services. To find out which plan is best for you, visit <http://www.sonystyleconnect.com> and find out what is available in your area.

VAIO Action Setup

Sony Electronics Inc.

VAIO Action Setup manages the settings for your notebook's Shortcut keys and i.LINK interface.

* i.LINK is a Sony trademark used only to designate that a product contains an IEEE 1394 connection. The i.LINK connection may vary, depending on the software applications, operating system, and compatible i.LINK devices. All products with an i.LINK connection may not communicate with each other. Refer to the documentation that came with your compatible i.LINK device for information on operating conditions and proper connection. Before connecting compatible i.LINK PC peripherals to your system, such as a CD-RW or hard disk drive, confirm their operating system compatibility and required operating conditions.

VAIO Support Agent

Sony Electronics Inc.

VAIO Support Agent provides immediate, interactive online support.

VisualFlow™

Sony Electronics Inc.

VisualFlow software is a state-of-the-art Sony multimedia browser designed specifically for Memory Stick® media. It displays any still picture, movie, or sound file stored in a Memory Stick® media in a visually pleasing, artistic manner. VisualFlow software not only plays a selected movie or sound file, but also enables playback of files by other applications such as PictureGear™, Memory Stick Slideshow, and Windows® Explorer.

WinDVD®

InterVideo Inc.

WinDVD is a simple-to-use DVD player including all the features you would expect to find in a standard consumer DVD player, while also offering advanced display and navigation features such as zoom, pan, bookmark, and time search.

Application, Driver, and System Recovery CDs

Your notebook comes with the following application, driver, and system recovery CDs. To use your recovery CDs, see “Using Your Recovery CDs” on page 45 for more information.

Application Recovery CD(s)

Sony Electronics Inc.

This CD enables you to reinstall individual applications if they become corrupted or are erased.

Driver Recovery CD(s)

Sony Electronics Inc.

This CD enables you to reinstall individual device drivers if they become corrupted or are erased.

System Recovery CD(s)

Sony Electronics Inc.

This CD enables you to restore the operating system and software that shipped with your computer if they become corrupted or are erased. This CD restores your computer to its original factory settings, so user data and applications installed since you started using your computer will be lost.

Using Your Recovery CDs


The following sections describe how to use the Application Recovery, Driver Recovery, and System Recovery utilities.

To use the Application Recovery CD(s)

The Application Recovery CD(s) allows you to reinstall individual applications if they become corrupted or are accidentally erased. Reinstalling an individual software title may correct a problem you are experiencing with your notebook or software application; you may not need to reinstall the entire contents of your hard drive. If you need to reinstall all the software titles that shipped with your notebook, use the System Recovery CD(s). See “To use the System Recovery CD(s)” on page 48 for more information. If you have any questions on using the Application Recovery CD, contact Sony Customer Support.

 You must be in Windows® to run the Application Recovery CD. If you have any questions on using the Application Recovery CD, contact Sony Customer Support.

- 1 Turn on your notebook. If your notebook is already on, close all applications.
- 2 When the Windows desktop appears, insert the Sony Application Recovery CD in the optical drive. The Application Recovery utility loads automatically.
- 3 When the Application Recovery menu appears, select the icon for the application you want to restore and then follow the on-screen instructions to complete the recovery process.

 Your system may include one or two Application Recovery CDs. If you have two Application Recovery CDs, insert the first CD to run the Application Recovery program. You may be prompted to insert the second CD, depending on the application you wish to restore.

To use the Driver Recovery CD(s)

The Driver Recovery CD utility enables you to reinstall individual drivers and repair software applications if they become corrupted or are erased. You can reinstall an individual driver to correct a problem that you are experiencing with

your computer, hardware, or software application. VAIO Support Agent, an application repair utility, uses a vault feature on the Driver Recovery CD during its software healing process.

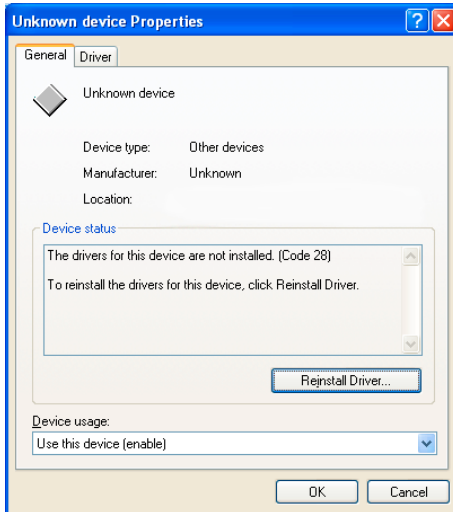
 If you need to reinstall all of the software applications that shipped with your computer, use the System Recovery CD.

You must be in Windows® to run the Driver Recovery CD utility.

Reinstalling specific drivers with the Driver Recovery CD

- 1** Turn on your computer. If your computer is already on, close all applications.
- 2** When the Windows desktop appears, insert the Driver Recovery CD into the optical disc drive.
- 3** Click Start on the Windows taskbar, then Control Panel. The Control Panel window appears.
- 4** Click Performance and Maintenance, then System. The System Properties dialog box appears.
- 5** From the Hardware tab, click Device Manager.
- 6** Click with the left mouse button to highlight the device for which you wish to reinstall the driver.
- 7** From the Actions menu, choose Properties. Properties dialog box for that device appears.

Properties dialog box



- 8 Click Reinstall Driver. The Hardware Update Wizard appears.
- 9 Click Next. The wizard will search for the correct driver on your Driver Recovery CD.
- 10 When the recovery process is complete, click Finish. Some drivers will require that you reboot the computer to complete installation.

To use the System Recovery CD(s)

The System Recovery utility formats your hard disk drive and restores all original software applications. Your computer is returned to the original factory settings.



The System Recovery process removes all software that you may have installed since you started using your computer. Reinstall any applications that were not included with the computer when you purchased it.

You can use the System Recovery CD(s) to reinstall the operating system and software titles that shipped with your notebook if they become corrupted or erased. You may not need to reinstall the entire contents of your hard drive. If you experience a problem with your notebook, reinstalling an individual device driver or software title may correct the problem. Use the Application Recovery CD(s) to reinstall individual applications or use the Driver Recovery CD(s) to reinstall device drivers. See “To use the Application Recovery CD(s)” on page 45 or “To use the Driver Recovery CD(s)” on page 45 for more information.

The System Recovery CD contains a backup copy of all the software originally installed on your hard disk drive. It can be used only to recover the hard disk of the notebook you purchased.

System Recovery options

- ☐ **System Drive Recovery** — All data on Drive C is deleted. The factory default settings and software applications are restored on this drive only.
- ☐ **Change Partition Size** — All partitions, custom installations, and changes are removed from the hard disk drive. You can set the partition sizes for both the Drive C and Drive D. The original, preinstalled operating system and software applications are restored.
- ☐ **Recovery to Original Factory Defaults** — All data and partitions are removed from the hard disk drive. All original factory settings, operating system, and preinstalled software is restored.



The System Recovery utility does not back up your system's data. If you wish to retain your system data, perform a backup to an external media.


Using the System Recovery CD(s)

Your system may take a few minutes to load necessary files. A blue screen appears during the downloading process.

- 1** Insert the Sony System Recovery CD in the optical drive. The System Recovery utility starts from the optical drive. The first CD must be in the drive when you turn on the computer.
- 2** Shut down your notebook as described in the section “Shutting Down Your Notebook” on page 26.
- 3** Wait 30 seconds and turn on your notebook.
- 4** The VAO System Recovery Utility dialog box appears. Click Next.
- 5** At the pop-up prompt, select Yes to begin the system recovery process. Follow the on-screen instructions.

If your notebook does not start from the Recovery CD

- 1** Press the power button and hold it for more than four seconds to turn off the notebook.
- 2** Turn on the notebook. When the Sony logo is displayed, press the F2 key. The BIOS setup menu screen appears.
- 3** Press the arrow keys to select the Exit menu.
- 4** Press the arrow keys to select “Get Default Values” and then press the Enter key. The message “Load default configuration now?” appears.
- 5** Check that “Yes” is selected, then press the Enter key.
- 6** Press the arrow keys to select “Exit” (Save Changes) and then press the Enter key. The message “Save configuration changes and exit now?” appears.
- 7** Check that “Yes” is selected, then press the Enter key. The notebook restarts from the Recovery CD.

 Your system may include one or more System Recovery CDs. If you have two System Recovery CDs, insert the first CD to run the System Recovery program. You are prompted to insert the next CD once the information from the previous CD has been installed.

The recovery process takes approximately 30 minutes to 60 minutes to complete.

After recovering your system using the System Recovery CD(s), you may be prompted to insert your Application Recovery CD(s) after restarting Windows. Insert the Application Recovery CD to automatically complete recovery of your system.

Troubleshooting

This section describes how to solve common problems you may encounter when using your notebook. Many problems have simple solutions, so try these suggestions before you contact Sony Computing Support (<http://www.sony.com/pcsupport>). Consult the following sections:

- ❑ Troubleshooting Your Notebook
- ❑ Troubleshooting the LCD Screen
- ❑ Troubleshooting the Mouse and Touchpad

Troubleshooting Your Notebook

My notebook does not start.

- ❑ Check that the notebook is plugged into a power source and that it is turned on. Check that the power indicator on the front panel of the notebook indicates that the power is on.
- ❑ Check that the battery packs are inserted properly and that they are charged.
- ❑ Make sure there is no floppy disk in the floppy disk drive.
- ❑ Confirm that the power cord and all cables are connected firmly.
- ❑ If you plugged the notebook into a power strip or uninterruptible power supply (UPS), make sure the power strip or UPS is turned on and working.
- ❑ If you are using an external display, check that it is plugged into a power source and turned on. Check that the brightness and contrast controls are adjusted correctly. See the manual that came with your display for details.
- ❑ Condensation may cause the notebook to malfunction. If this occurs, do not use the notebook for at least one hour.
- ❑ Take the battery pack off the notebook, unplug the power cord and plug it in again, then turn on the power.

My notebook starts, but a BIOS error is displayed.

When the internal backup battery is low on power, it may not start your system properly. The message “Press <F1> to resume, <F2> to setup” appears at the bottom of the screen. Follow these steps:

- 1 Press the F2 key. The BIOS Setup menu appears.
- 2 Set the date (month/day/year). Press Enter.
- 3 Press ↓ to select System Time, then set the time (hour: minute: second). Press Enter.
- 4 Press → to select Exit, then press ↓ to select Get Default Values. The message “Load default configuration now?” appears.
- 5 Select Yes and press Enter.
- 6 Select Save and Exit, and then press Enter. The message “Save Configuration changes and exit now?” appears.
- 7 Select Yes, and then press Enter. The notebook restarts.

My notebook starts, but the message “Operating system not found” appears and Windows does not start.

Make sure there is no floppy disk in the floppy disk drive (non-bootable).

- If a non-bootable floppy disk is in the drive, follow these steps:
 - 1 Turn off the notebook, and then remove the floppy disk.
 - 2 Restart the notebook and confirm that Windows starts properly.
- If Windows still does not start, follow the steps below to initialize the BIOS:
 - 1 Remove any floppy disk from the floppy disk drive.
 - 2 Turn off the notebook.
 - 3 Remove any peripheral devices connected to the notebook.
 - 4 Turn the notebook back on.
 - 5 Press the F2 key when the Sony logo appears. The BIOS setup menu screen appears.
 - 6 Press the directional arrow keys to select the Exit menu.

- 7 Press the arrow keys to select “Get Default Values” and then press Enter. The message “Load default configuration now?” appears.
- 8 Select Yes, then press Enter.
- 9 Use the directional arrow keys to select Save and Exit, and then press Enter. The message “Save configuration changes and exit now?” appears.
- 10 Select Yes, then press Enter. The notebook restarts.

If your notebook continues to display the message “Operating system not found,” and Windows does not start, use your supplied System Recovery CD to restore the operating system and software titles shipped with your notebook. See “To use the System Recovery CD(s)” on page 48 for more information.




The System Recovery CD restores your notebook to its original state, so user data and applications will be lost.

My notebook stops responding or does not shut down.

It is best to shut down your notebook using the Turn Off Computer command on the Windows® Start menu. Using other methods, including those listed here, may result in loss of unsaved data.

- ❑ Try restarting the notebook. On the Windows taskbar, click Start, select Turn Off Computer, and then click Turn Off.
- ❑ If your computer does not restart, press the Ctrl+Alt+Delete keys at the same time. The Windows Task Manager dialog box appears, and you can turn off the computer from the Shut Down menu.
- ❑ If the previous step does not work, press and hold the power button for at least four seconds. This turns off the power.
- ❑ If your notebook stops responding while playing a CD or DVD, stop the CD/DVD, and restart the notebook by pressing the Ctrl+Alt+Delete keys at the same time. The Windows Task Manager dialog box appears, and you can turn off the computer from the Shut Down menu.
- ❑ Unplug the notebook from the AC adapter and remove the battery pack from your notebook.

 Pressing the Ctrl+Alt+Delete keys to turn off the computer via Windows Task Manager or the Windows Security screen, or turning off the computer with the power switch may result in data loss in files that are currently open.

Troubleshooting the LCD Screen

My LCD screen is blank.

- ☐ Check that the notebook is plugged into a power source and that it is turned on.
- ☐ Check that the power indicator on the notebook is on.
- ☐ Check that the battery pack is inserted properly and charged.
- ☐ The notebook may be in LCD (Video) Standby mode. Press any key to activate the screen.
- ☐ The display mode may be set to external display mode. Press and hold the Fn key while pressing the F7 key several times.

Troubleshooting the Mouse and Touchpad

My mouse does not work.

- ☐ If you are using an external PS/2® mouse, check that the mouse is plugged into the mouse port. See “Connecting an External Mouse or Keyboard” in the online User Guide for more information.
- ☐ If you are using an optional, compatible Sony USB mouse, check that the mouse is plugged into the USB port.
- ☐ If you are still experiencing problems, use your supplied Driver Recovery CD(s) to reinstall the mouse drivers. See “Using Your Recovery CDs” on page 45 for more information.

My touchpad does not work properly.

You may have disabled the touchpad without a mouse being connected to the notebook. To enable the touchpad:

- 1** Press the Windows® key and use the arrow keys to select All Programs, and then Sony Notebook Setup.
- 2** Select the Touchpad tab by pressing the arrow keys.
- 3** Select Enable Touchpad either by pressing Tab or pressing the Alt+“E” keys simultaneously, and then press Enter.

You must restart the notebook to make the touchpad work again.

If your touchpad is interpreting a single tap as a double-click, you must adjust the button assignments. Follow these steps:

- 1** Press the Windows key and use the arrow keys to select Control Panel. The Control Panel window appears.
- 2** Press the Tab key until Printers and Other Hardware is highlighted, and press Enter. The Printers and Other Hardware window appears.
- 3** Press the Tab key until Mouse is highlighted, then press enter. The Mouse Properties dialog box appears.
- 4** Change the button assignments in the Mouse Properties dialog box. (One of the buttons is assigned to the double-click action.)

If this procedure does not work, ensure that another mouse was not installed. You may need to use your supplied Driver Recovery CD(s) to reinstall the mouse drivers. See “To use the Driver Recovery CD(s)” on page 45 for more information.

The pointer does not move while I am using the Touchpad or Mouse.

- ❑ The computer should be restarted. Follow these steps:
 - 1 Press the Windows key.
 - 2 Press the “U” key to select Turn Off Computer, and wait at least four seconds.
 - 3 Press the “R” key to restart your computer.
- ❑ If you cannot turn off your notebook as described in the step above, press the Ctrl+Alt+Delete keys at the same time. The Windows Task Manager dialog box appears, and you can turn off the computer from the Shut Down menu. Wait at least four seconds, and then restart the computer.
- ❑ If you cannot restart your notebook as described in the step above, press and hold the power button for more than four seconds to turn off the notebook.
- ❑ If the pointer does not move while playing a disc, press the Ctrl+Alt+Delete keys at the same time. The Windows Task Manager dialog box appears, and you can restart the computer from the Shut Down menu.
- ❑ If this procedure does not work, ensure that another mouse was not installed.
- ❑ You may need to use your supplied Driver Recovery CD(s) to reinstall the touchpad drivers. See “To use the Driver Recovery CD(s)” on page 45 for more information.

Getting Help

Sony provides you with several support options to answer questions about your VAIO® notebook or the preinstalled software. Refer to these resources in the order they are listed.

Support Options

- 1 VAIO® Notebook User Guide and VAIO® Notebook Quick Start**

The online VAIO® Notebook User Guide and printed VAIO® Notebook Quick Start provide you with information on how to maximize your notebook capabilities and solve common problems. To access the online user guide, click Start on the Windows® taskbar, select Help and Support, and click on VAIO User Guide. The Quick Start is supplied in the box with your notebook.
 - 2 Manuals and Online Help Files**

The software preinstalled on your notebook may come with an online manual. These manuals are stored on the hard disk drive as online help files. You can find the help files from the Help menu under the specific software application. Some software applications may come with a printed manual.
 - 3 Operating System Online Support**

Your notebook comes preinstalled with Microsoft® Windows®. For operating system support, you can access Microsoft® customer support at: <http://support.microsoft.com/directory/>.
 - 4 VAIO Support Agent**

You can find VAIO Support Agent by clicking Start and then selecting Help and Support. Using advanced diagnostic technology, Sony's VAIO Support Agent runs scheduled protections of your applications, network settings, and other important software settings. When your software is protected, you can use VAIO Support Agent to repair software problems by restoring your software to any of the previously protected states.
 - 5 Sony Computing Support**

This service provides you with instant access to information on commonly encountered problems. Enter a description of your problem and the Knowledge Database searches for the corresponding solutions online. You can access Sony Computing Support at: <http://www.sony.com/pcsupport>.
-

6 Sony Fax-on-Demand

This service, which requires a fax machine or your fax software, provides answers to commonly asked questions. You can use this automated service to request a list of available topics, then select the topics that you want to receive. To contact the Sony fax-on-demand service, call: 1-888-4-SONY-PC (1-888-476-6972).

7 Sony Customer Support

Software support is available free of charge for 90 days after the original date of purchase. You can call and speak with a Sony Customer Support Representative without using your computer by calling: 1-888-4-SONY-PC (1-888-476-6972).

Software Support Information

Adobe® Acrobat® Reader, Photoshop® Elements (Adobe Systems, Inc.)

Web site	http://www.adobe.com/
phone	206-675-6126 (fee-based support)
e-mail	techdocs@adobe.com
hours	M-F, 6 AM-5 PM PST

America Online® (America Online, Inc.)

Web site	http://www.aol.com
phone	800-827-3338
hours	7 days a week, 24 hours a day

Apple QuickTime™ (Apple Computer Inc.)

Web site	http://www.apple.com
phone	800-692-7753
hours	7 days a week, 24 hours a day

ArcSoft PhotoPrinter® 2000 Pro (ArcSoft, Inc.)

Web site	http://www.arcsoft.com
e-mail	support@arcsoft.com
phone	510-440-9901
fax	510-440-1270
hours	M-F 8:30 AM - 5:30 PM PST

EarthLink Network Total Access® (EarthLink Inc.)

Web site	http://www.help.earthlink.net/techsupport
e-mail	support@earthlink.net
phone	800-890-5128, 800-890-6356
hours	7 days a week, 24 hours a day

PC-Cillin® (Trend Micro, Inc.)

Web site	http://www.antivirus.com/pc-cillin/
phone	949-387-7800
e-mail	support@trendmicro.com
hours	M - F 8 AM - 5 PM (PST)

Quicken® (Intuit Inc.)

Web site	http://www.intuit.com/support
phone	800-644-3193
hours	7 days a week, 24 hours a day

RealJukebox®, RealPlayer® (Real Networks, Inc.)

Web site(s)	http://service.real.com/rjoptions.html http://service.real.com/help/call.html
-------------	--

Sony Applications (Sony Electronics Inc.)

Web site	http://www.sony.com/pcsupport
phone	888-4-SONY-PC (888-476-6972)*
hours	7 days a week, 24 hours a day

* Support from 1-888-4-SONY-PC is free of charge for 90 days after the original date of purchase.

Windows® Operating System, Word (Microsoft Corp.)

Web site	http://www.sony.com/pcsupport
phone	888-4-SONY-PC (888-476-6972)*
hours	7 days a week, 24 hours a day

* Support from 1-888-4-SONY-PC is free of charge for 90 days after the original date of purchase.

WinDVD® (InterVideo, Inc.)

Web site	http://www.intervideo.com
phone	510-651-0888

Sony Service Center

For the Sony Service Center nearest you, call 1-888-4-SONY-PC (1-888-476-6972) or find Sony Customer Service on the Web at: <http://www.sony.com/pcsupport>.

Index

A

- AC adapter 14, 19
- AC power 19
- adding
 - memory 29
- adjusting
 - brightness 25
- Application Recovery CD 45

B

- battery packs 14, 20
 - charging 21
 - indicator lights 22
 - inserting 20
 - inserting into battery bay 20
 - loading 20
 - rechargeable 19
 - removing 23
- brightness
 - adjusting 25
- buttons
 - Start (Windows) 26

C

- cables
 - phone 14
 - power cord 19
- CD-ROM 6, 16
- CD-RW 6
- charge status indicator light 22
- charging battery packs 21
- choosing
 - power source 20

- computer
 - features 5
 - setting up 14
 - starting 25
 - troubleshooting 51
 - unpacking 7

- connecting
 - power source 19
- controls
 - locating 14

D

- DC In 19
- display
 - troubleshooting 54
- Driver Recovery CD 45
- drives
 - floppy disk 14
- DVD-ROM 6, 16

E

- Ethernet port 17
- expansion memory configuration 30

F

- features 5
- floppy disk drive 14
 - cable 14

H

- hardware
 - online support 58
- help
 - getting 57
- Hibernate mode 27

I

i.LINK 15

indicator lights

battery 22

charge status 22

inserting

battery pack 20

installing

memory module 34

J

jacks

DC In 19

L

LCD

lock lever 25

troubleshooting 54

lever

LCD 25

loading

battery pack 20

locating controls and ports 14

M

memory

adding 29

viewing the amount of 36

memory module

expansion 30

installing 34

removing 32

Modem port 17

mouse

troubleshooting 54

P

phone

cable 14

ports

locating 14

power

cord 19

switch 25

power saving modes

Hibernate 27

Standby 27

power sources 20

connecting 19

Printer port 17

R

rechargeable battery packs 19, 20

recharging battery packs 21

Recovery CD 45

removing

battery packs 23

memory module 32

restoring data 45

S

second battery pack 20

selecting

power source 20

setting up your PC

support 58

Software list 37

Software support information 60

Sony Computing Support 58

Sony Fax-on-Demand service 59

Sony Service Center 61

Standby mode 27

starting

computer 25

startup problems 26

support options 57

T

touchpad

troubleshooting 54

troubleshooting

general 51

LCD screen 54

mouse and touchpad 54

notebook 51

startup 26

Turn Off Computer dialog box 26

shutting down 26

turning on

computer 25

U

unpacking 7

USB ports 17

V

ventilation slot 17

viewing the amount of memory 36

W

Windows

Start button 26

taskbar 26, 53

© 2002 Sony Electronics Inc. Reproduction in whole or in part without written permission is prohibited. All rights reserved. Sony, VAIO, the VAIO logo, VAIO Smart, DVgate, Handycam, Media Bar, MovieShaker, PictureGear, and i.LINK are trademarks of Sony. All other trademarks are trademarks or registered trademarks of their respective owners.

Printed in USA

4-662-222-11