

SS-CCP11

SERVICE MANUAL

Ver 1.1 2002.04



*US Model
Canadian Model
AEP Model
UK Model
E Model
Australian Model*

- SS-CCP11 is the speaker system in CMT-CP11/CP11K.

SPECIFICATIONS

Speaker system	2-way, bass-reflex type
Speaker units	
Woofer:	12 cm dia. cone type
Tweeter:	2.5 cm dia. cone type
Normal impedance	6 ohms
Dimensions (w/h/d)	Approx. 150 × 252 × 252 mm incl. projecting parts and controls
Mass	Approx. 2.6kg net per speaker

Design and specifications are subject to change without notice.

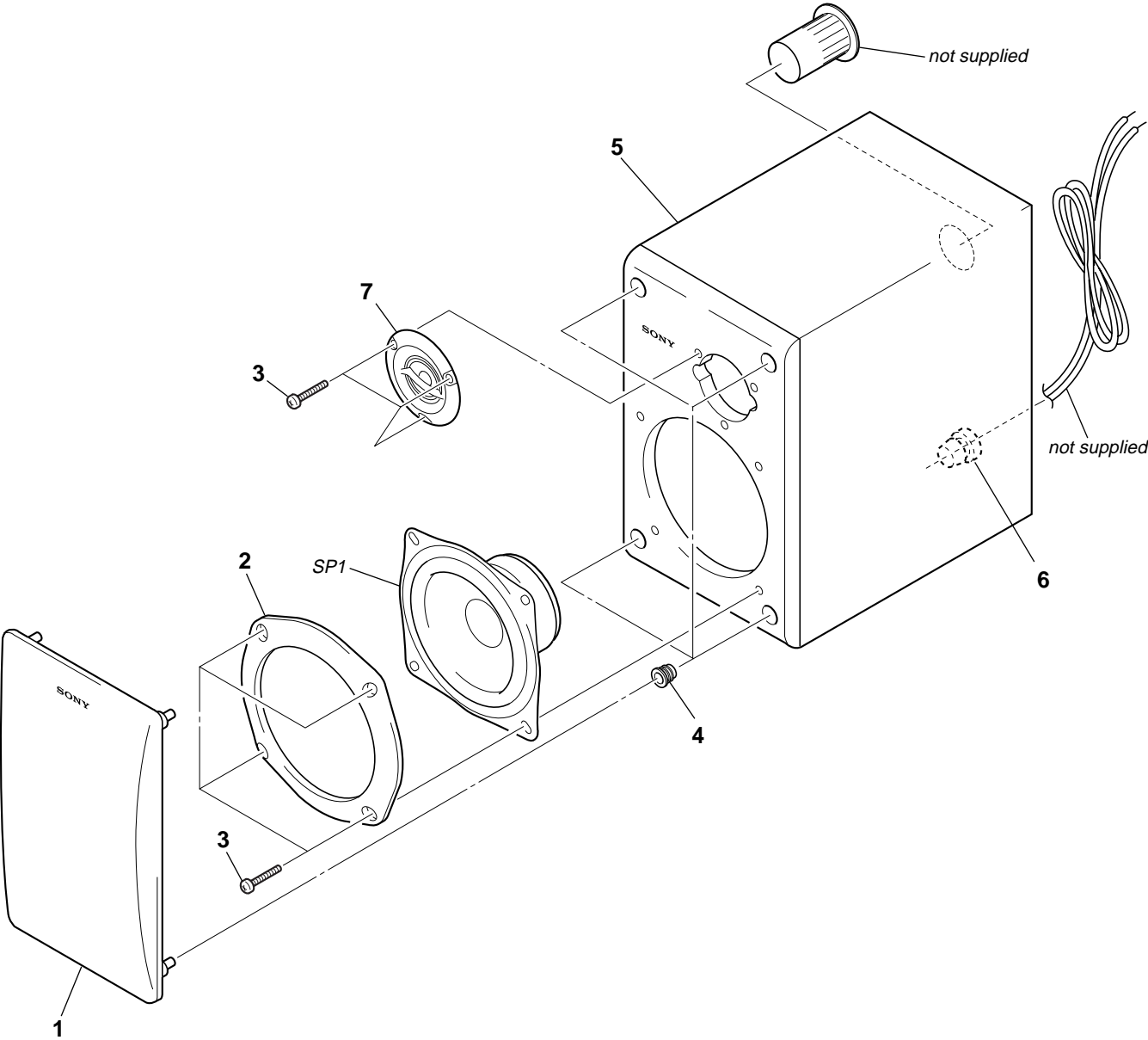
SPEAKER SYSTEM

EXPLODED VIEW AND PARTS LIST

NOTE:

- XX, -X mean standardized parts, so they may have some differences from the original one.
- Items marked "*" are not stocked since they are seldom required for routine service. Some delay should be anticipated when ordering these items.
- The mechanical parts with no reference number in the exploded views are not supplied.

R-CH



Ref. No.	Part No.	Description	Remarks	Ref. No.	Part No.	Description	Remarks
1	X-4952-727-1	NET ASSY, SPEAKER		5	4-217-366-01	BOX(R), SPEAKER (R-CH)	
2	4-217-353-01	PANEL(WOOFER)		6	4-870-003-00	CLIPPER, CODE	
3	4-874-614-11	SCREW(4) (3.5X14), TAPPING		7	A-4412-189-A	PANEL ASSY, TWEETER	
4	4-218-202-01	CATCHER, NET		SP1	1-529-727-11	SPEAKER (12cm) (WOOFER)	
5	4-217-365-01	BOX(L), SPEAKER (L-CH)					

MEMO

REVISION HISTORY

Clicking the version allows you to jump to the revised page.

Also, clicking the version at the upper right on the revised page allows you to jump to the next revised page.

[illegible]