

SONY

TC-K670

DESCRIPTION: Cassette Rec/Player

DIMENSIONS

(WHD): 17" x 4 3/4" x 10 3/4"

WEIGHT: 12 lbs.

POWER

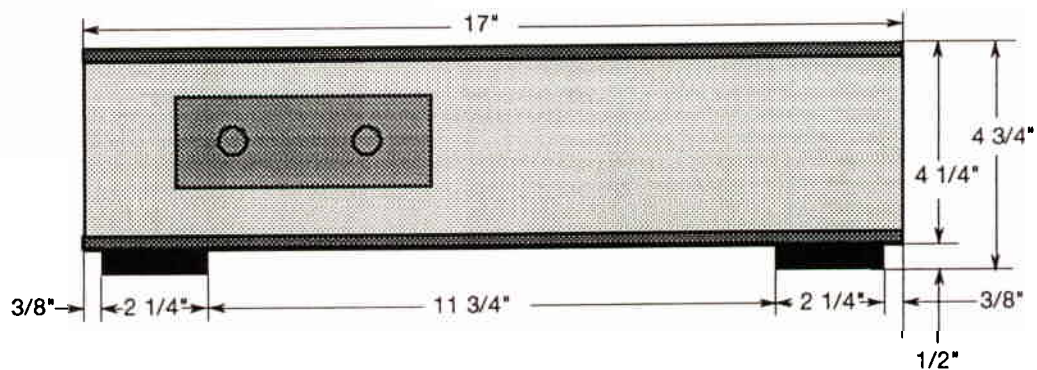
REQUIREMENTS: 120V AC
60Hz

POWER

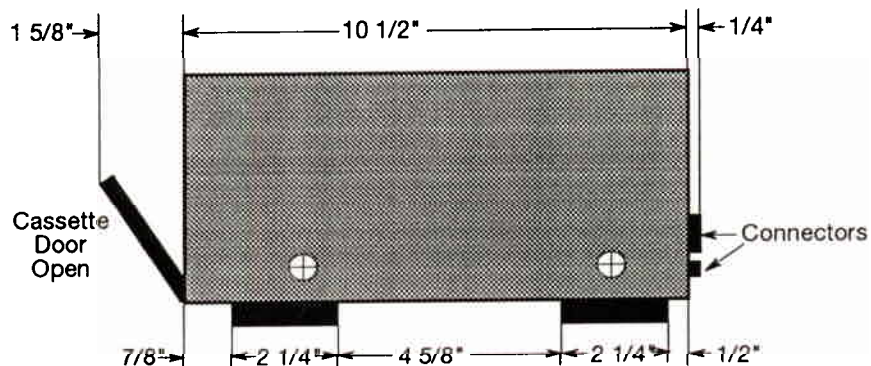
CONSUMPTION: 25 Watts

Scale 4:1

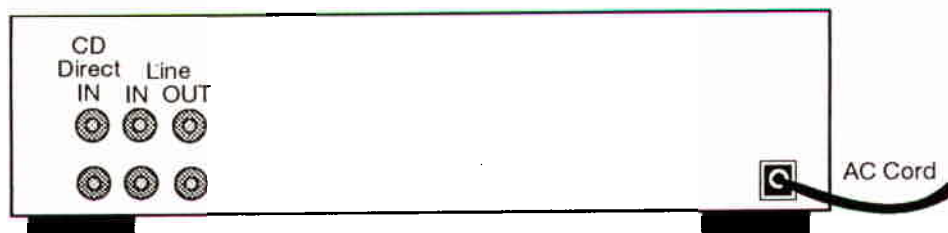
FRONT VIEW



SIDE VIEW



BACK VIEW



Contractor's Notes: