

SONY®

Adobe Photoshop Plug-in Module

User's Guide

This guide describes how to install and use the Adobe Photoshop plug-in module needed to create border printing templates for the UP-CR10L.

Before Using this Software

Before using the plug-in module, be sure to read the "ReadMe" file located on the CD-ROM.

The SnapLab logo features the word "SnapLab" in a stylized font. The "S" is grey, "nap" is blue, and "Lab" is grey. A horizontal rainbow-colored bar is positioned above the "S".

UP-CR10L

Table of Contents

Outline	3
Operation Environment Requirements	3
Installing the Plug-in Module	4
Creating a Template	4
Workflow for Template Creation and Use	4
Creating Image Data	4
Using the Plug-in Module	5
Transferring Templates to the UP-CR10L	5
Created Folders and Files	6

Adobe and Photoshop are trademarks of Adobe Systems Incorporated.

Microsoft and Windows are registered trademarks of Microsoft Corporation in the United States of America and other countries.

CompactFlash is a trademark of SanDisk Corporation. Other company names and product names appearing in this document are generally registered trademarks or trademarks of their respective owners.

Outline

The UP-CR10L Photoshop plug-in module is software that allows using Adobe Photoshop to create templates for the border print function of the UP-CR10L. When the plug-in module is installed, you can use your own image data to automatically create all required template files and folders.

Operation Environment Requirements

The system requirements for use of the plug-in module are as follows.

- Microsoft Windows 2000/Microsoft Windows XP
 - Adobe Photoshop Version 5.5, 6.0, 7.0, Photoshop CS, CS2
- or
- Adobe Photoshop Elements Version 1.0, 2.0

Installing the Plug-in Module

To enable use of the plug-in module, the module must be copied to the plug-in folder of Photoshop. Copy the “\UPCR10LR10\plug-in\Sony_upcr.8be” from the supplied CD-ROM to your computer. For information on which folder to use as copy destination, consult the Photoshop documentation.

Creating a Template

This section describes how to use the plug-in module to create a template for use with the border print function.

Workflow for Template Creation and Use

Create the image data for the border design.



Use the plug-in module, and create a template.



When template data is output to the expansion CompactFlash card

Insert the expansion CompactFlash card into the UP-CR10L.

When template data is output to a drive other than the expansion CompactFlash card

Use a memory card to copy the template data to the expansion CompactFlash card of the UP-CR10L.



The created template can be used.

Creating Image Data

First, you should create image data containing the frame design. The required size for the image data depends on the print size and orientation. Create image data with the correct size.

Print size	Image size (unit: pixels)
3×5" size, landscape	1,536 (H) × 1,100 (V)
3×5" size, portrait	1,100 (H) × 1,536 (V)
4×6" size, landscape	1,848 (H) × 1,248 (V)
4×6" size, portrait	1,248 (H) × 1,848 (V)
5×7" size, landscape	2,148 (H) × 1,536 (V)
5×7" size, portrait	1,536 (H) × 2,148 (V)

Only image data in RGB format can be used. Templates cannot be created with image data in a format other than RGB.

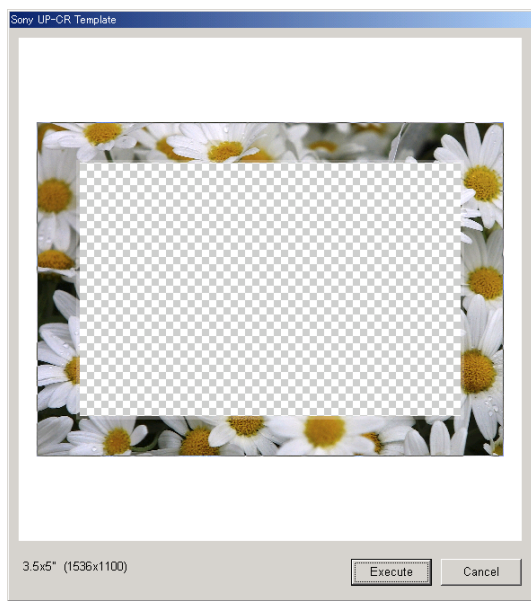
About transparent area

The transparent area is the area of a border print where the underlying photograph is visible. Set the color of the locations you want to use as the transparent area to the RGB values (254,254,254). If there are locations set to these RGB color values that you do not want to use as part of the transparent area, set the transparent area with the plug-in module. For details, refer to step 3 of “Using the Plug-in Module.”

Using the Plug-in Module

- 1 Open the image data to be used for the template in Photoshop.
- 2 From the [File] menu of Photoshop, select [Export] – [Sony UP-CR Template].

The dialog box of the plug-in module appears. The transparent area is displayed as a checkered pattern.



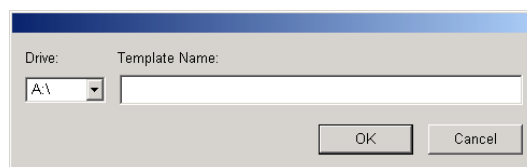
Memo

However, if you click and drag the mouse to specify an area, areas outside of the specified box are not treated as part of the transparent area, even if their RGB color values are (254,254,254). Areas within the specified box with RGB color values other than (254,254,254) are also not treated as part of the transparent area.

The minimum size for this area is 10 pixels on each side. Any setting of 9 pixels or under will be disregarded.

- 3 Click the [Execute] button in the dialog box of the plug-in module.

The following dialog box appears.



- 4 Specify the destination drive and the template name.

Drive:

This is the drive where the template data will be stored. The folder cannot be specified.

If your computer can use CompactFlash cards, insert the expansion CompactFlash card of the UP-CR10L into your computer, and specify the corresponding drive.

Template data are always stored in a folder named “\Sony\UPCR\template*(paper size)*” on the specified drive. The “3x5”, “4x6”, and “5x7” folder is selected automatically, according to the image size. If this folder does not exist, it will be created automatically.

Template Name:

Enter a name to identify the template. The name can be up to 32 characters long and may only contain alphanumeric characters and the underline symbol (_). No extension can be specified.

- 5 Click the [OK] button.

The template data are stored on the specified drive. If template data with the same name already exist, a message asking whether to overwrite the existing data appears.

For details on the files and folders created on the destination drive, refer to “Created Folders and Files.”

Transferring Templates to the UP-CR10L

When template data is output to the expansion CompactFlash card

Insert the expansion CompactFlash card into the slot designated for the card on the UP-CR10L.

When template data is output to a drive other than the expansion CompactFlash card

Copy the created template to the expansion CompactFlash card using the following procedure.

- 1 Insert a memory card into the computer.
- 2 Create the folder “Sony\UPCR\Template” in the root folder of the memory card, and copy the entire folder for each desired print size into it.
- 3 Insert the memory card into the UP-CR10L.
- 4 Copy the template data from the memory card to the expansion CompactFlash card of the UP-CR10L, using template tab of the administration screen.

For details on operations with the UP-CR10L, refer to the UP-CR10L Operating Instructions.

Created Folders and Files

When the plug-in module is used, the following folders and files are created on the destination drive.

