

XS-L1055G/L1065G/ L1255G/L1265G

SERVICE MANUAL

US Model

Ver 1.0 2000.12



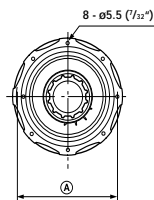
Photo: XS-L1255G

SPECIFICATIONS

	XS-L1265G/L1255G	XS-L1065G/L1055G
Speaker	Woofer 30 cm (12 in.), cone type	Woofer 25 cm (10 in.), cone type
Maximum input power	1,200 watts	1,000 watts
Rated input power	400 watts	300 watts
Impedance	4 ohms + 4 ohms (XS-L1265G) 4 ohms (XS-L1255G)	4 ohms + 4 ohms (XS-L1065G) 4 ohms (XS-L1055G)
Sensitivity	88 dB/W/m (XS-L1265G) 87 dB/W/m (XS-L1255G)	85 dB/W/m
Frequency response	20 – 3,000 Hz	25 – 3,500 Hz
Mass	Approx. 7.9 kg (17 lb. 67 oz.) per speaker	Approx. 7.4 kg (16 lb. 5 oz.) per speaker

Design and specifications are subject to change without notice.

Dimensions

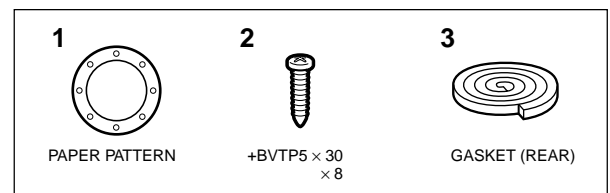


Unit: mm (in.)
Unit: mm (in.)

	A	B	C	D
XS-L1265G /L1255G	ø 296 (11 1/4")	ø 330.5 (13 1/8")	ø 280 (11 1/8")	155.5 (6 1/8")
XS-L1065G /L1055G	ø 248.5 (9 7/8")	ø 279.5 (11 1/8")	ø 232 (9 1/4")	137.5 (5 1/2")

PARTS LIST

Ref. No.	Part No.	Description	Remark
	1-529-991-11	SPEAKER (30cm-SINGLE) (L1255G)	
	1-529-991-21	SPEAKER (30cm-DUAL) (L1265G)	
	1-529-992-11	SPEAKER (25cm-SINGLE) (L1055G)	
	1-529-992-21	SPEAKER (25cm-DUAL) (L1065G)	
	3-227-346-11	MANUAL, INSTRUCTION (ENGLISH, FRENCH)	
	3-227-348-11	INSTRUCTION, INSTRUCTION MANUAL (ENGLISH, FRENCH)	
1	3-228-903-01	PAPER PATTERN (L1255G/L1265G)	
1	3-228-817-01	PAPER PATTERN (L1055G/L1065G)	
2	7-685-679-19	SCREW +BVTP 5X35 TYPE2 N-S	
3	3-024-340-01	GASKET (REAR)	



SUB WOOFER

9-870-232-11
2000L0500-1
© 2000.12

Sony Corporation
Audio Entertainment Group
General Engineering Dept.

SONY®

REVISION HISTORY

Clicking the version allows you to jump to the revised page.

Also, clicking the version at the upper right on the revised page allows you to jump to the next revised page.

[illegible]